



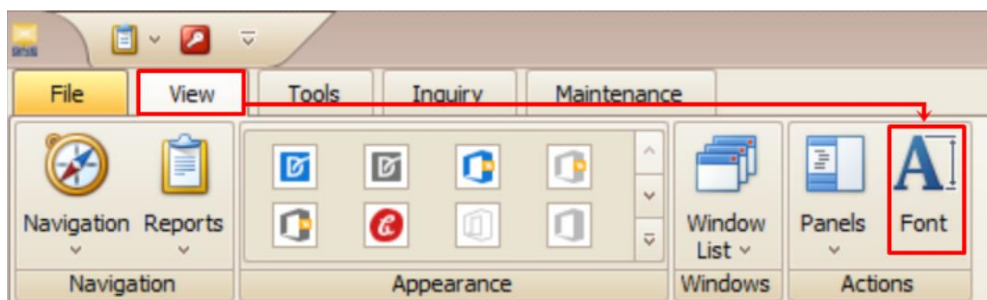
HOW TO CHANGE THE FONT SETTINGS OF THE SYSTEM

In System, there is a feature where the **Application Font** can be Edited base on the preference of the User, it can be customized by its size and style.



How to Edit the **Application Font**

Under View tab > **Font**



Then this Font Settings window will appear. It shows the Application Font, as noticed in the **Font Style** and **Font Size**, it shows the current set of Display Font in the System.

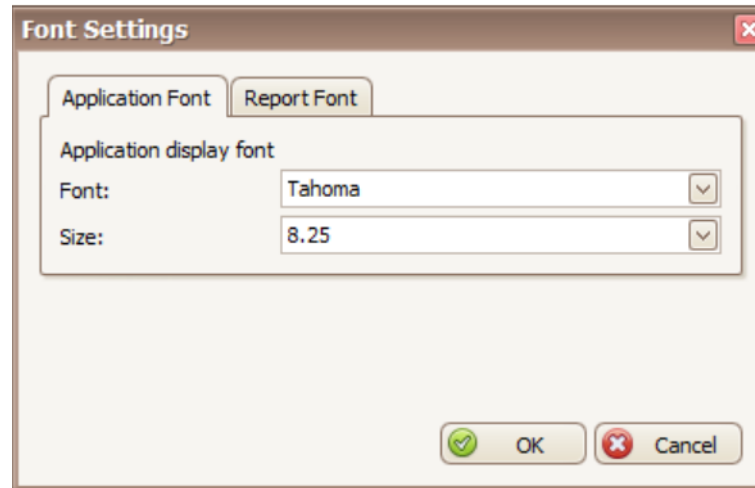


Figure 1 - Current Font Settings

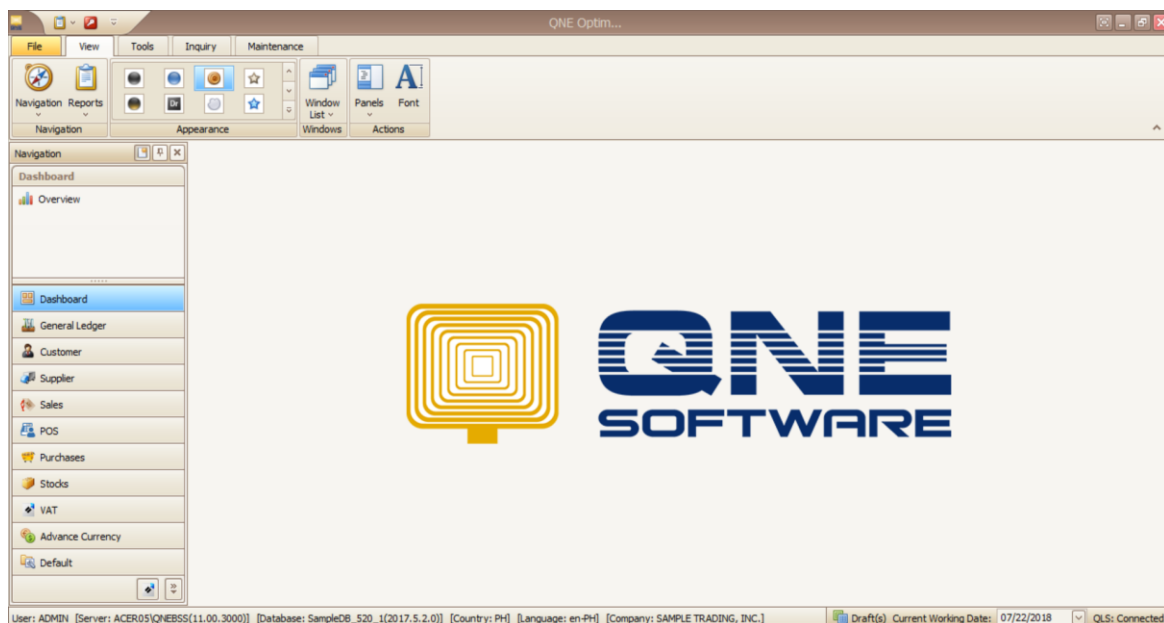


Figure 2 - Font Settings Using the Format in Figure 1

Edit the Font Settings base on your preferred *Font Style* or *Font Size*, then click *OK* for it to be applied.

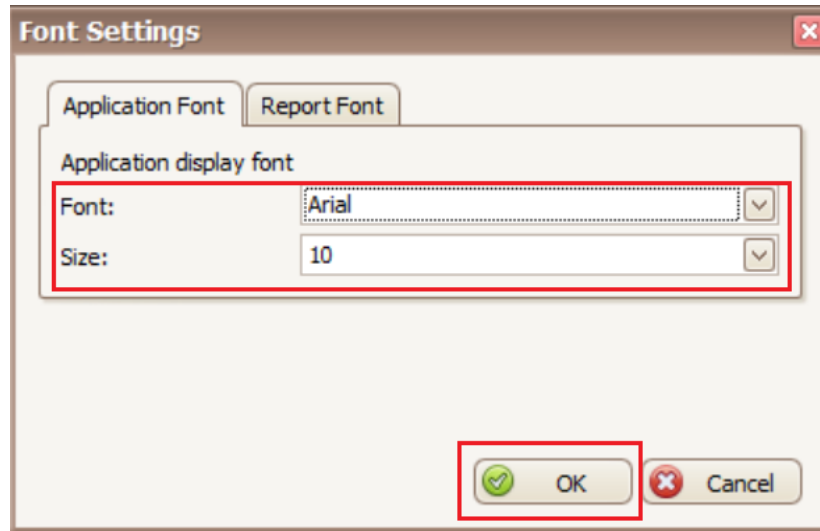


Figure 3 - New Font Settings

As noticed in the below image, it applies the new Font Settings in *Figure 3*.

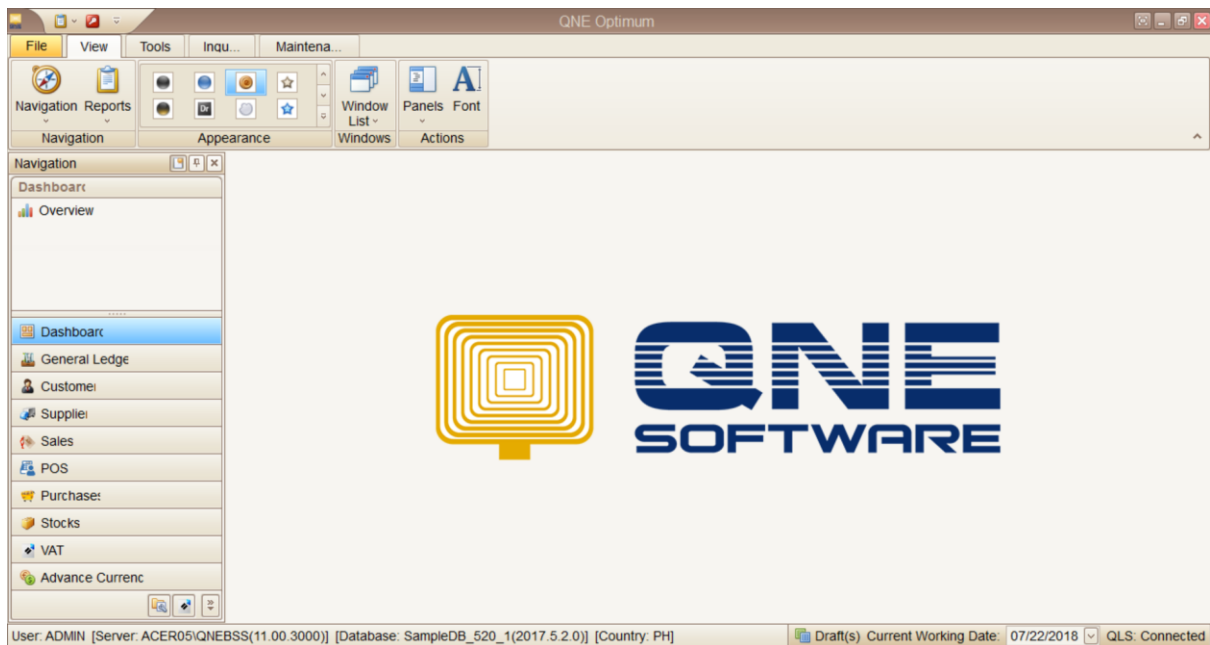


Figure 4 - Font Setting using the Format in Figure 3