

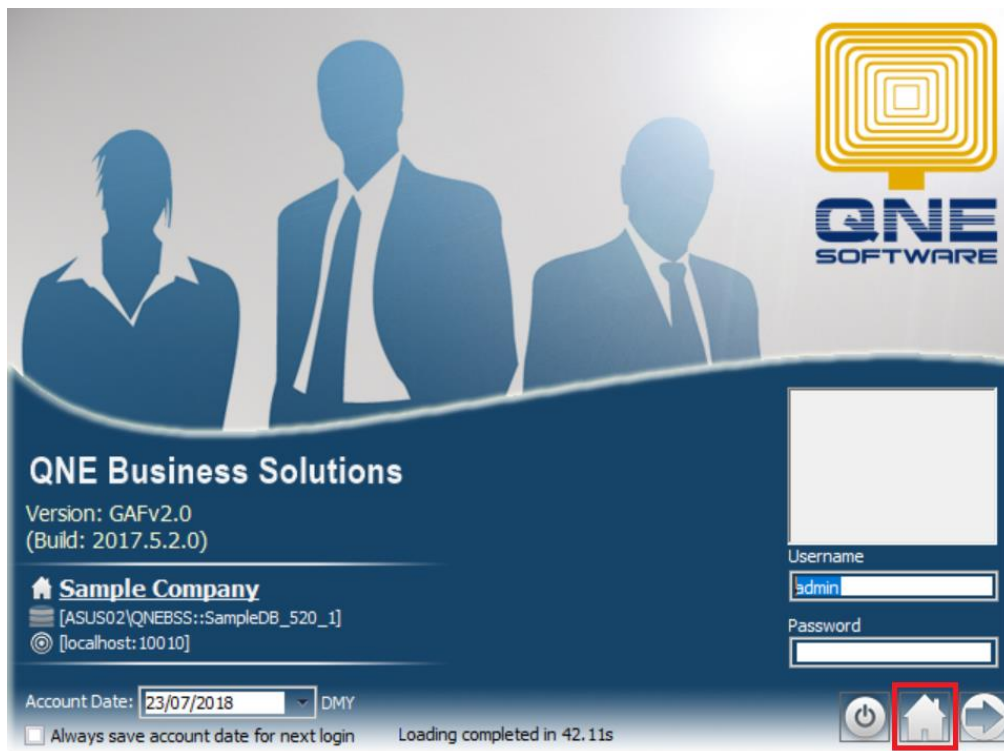


HOW TO APPEND A DATABASE

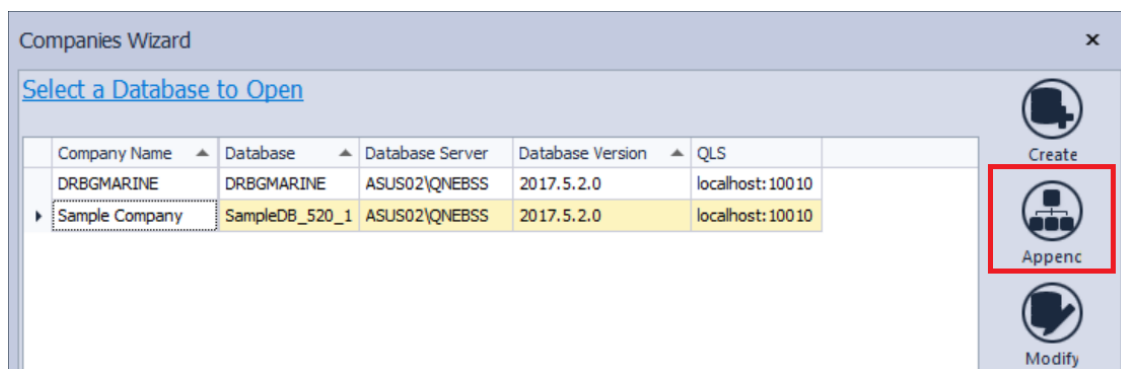
What is APPEND?

Append is the process of connecting workstation to a server. This function is to access the database that is stored in the Server.

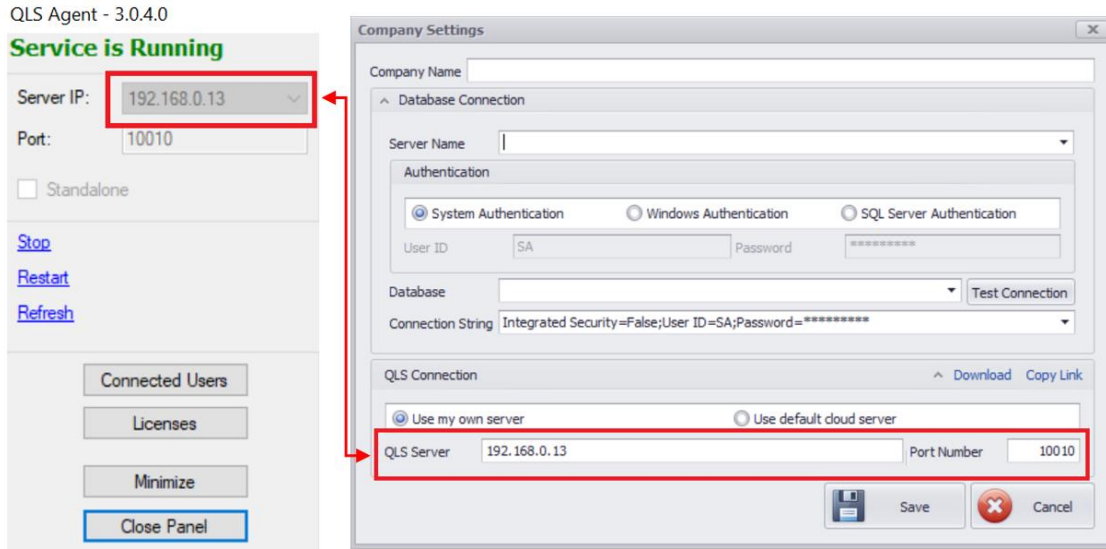
To **Append a Database**, Open the Database Wizard on the Log-In Form of the System.



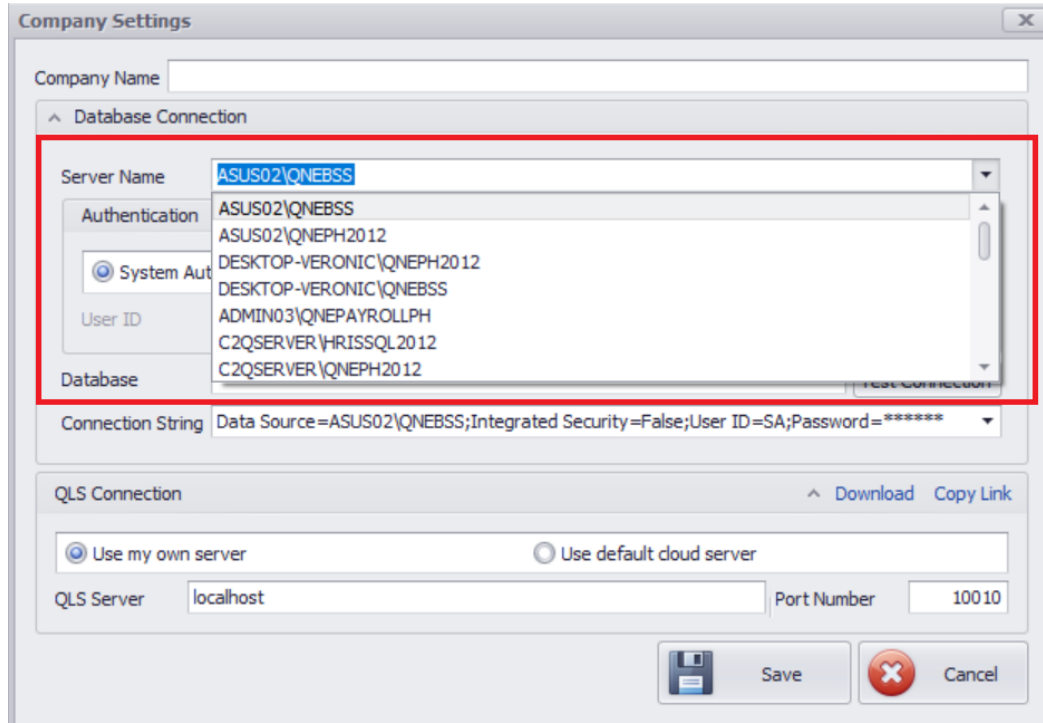
In **Database Wizard** click the **Append** Button.



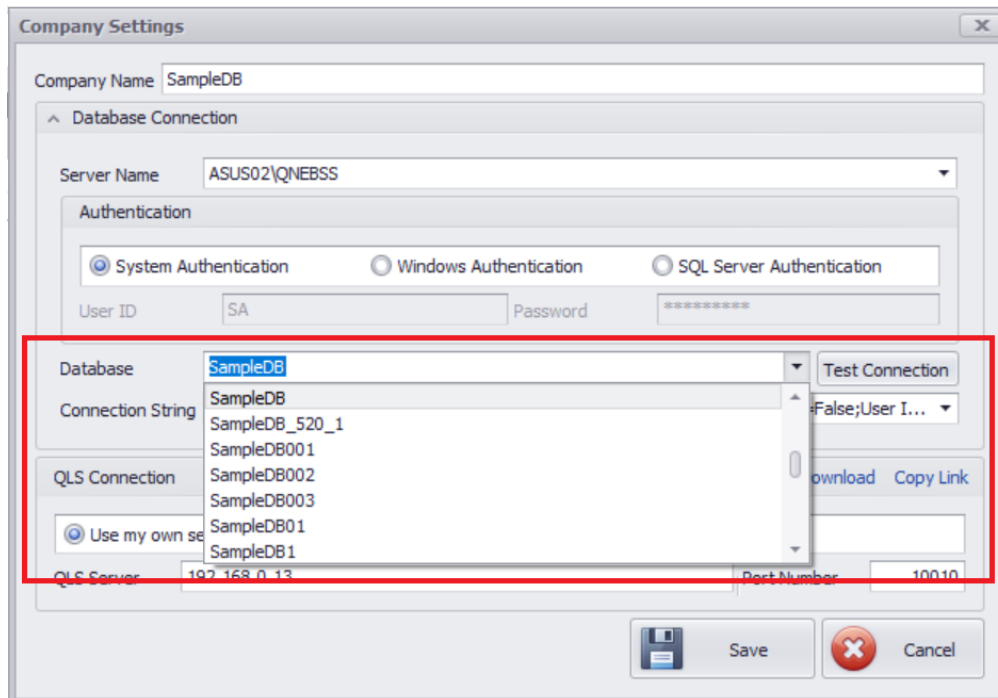
Make sure that the IP Address and Port Number on the Company Settings is same to the IP Address and Port of QLS Agent.



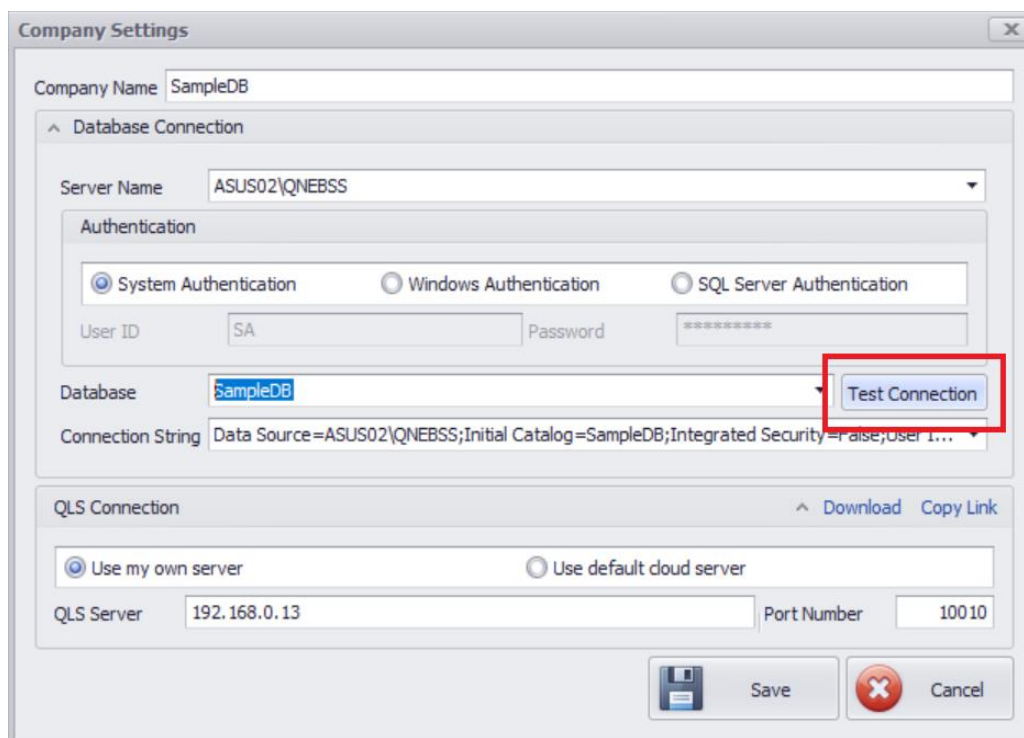
Search for the Server using Server Name Dropdown Menu. The Server Name is Consists of Computer Name and SQL Instance Name.



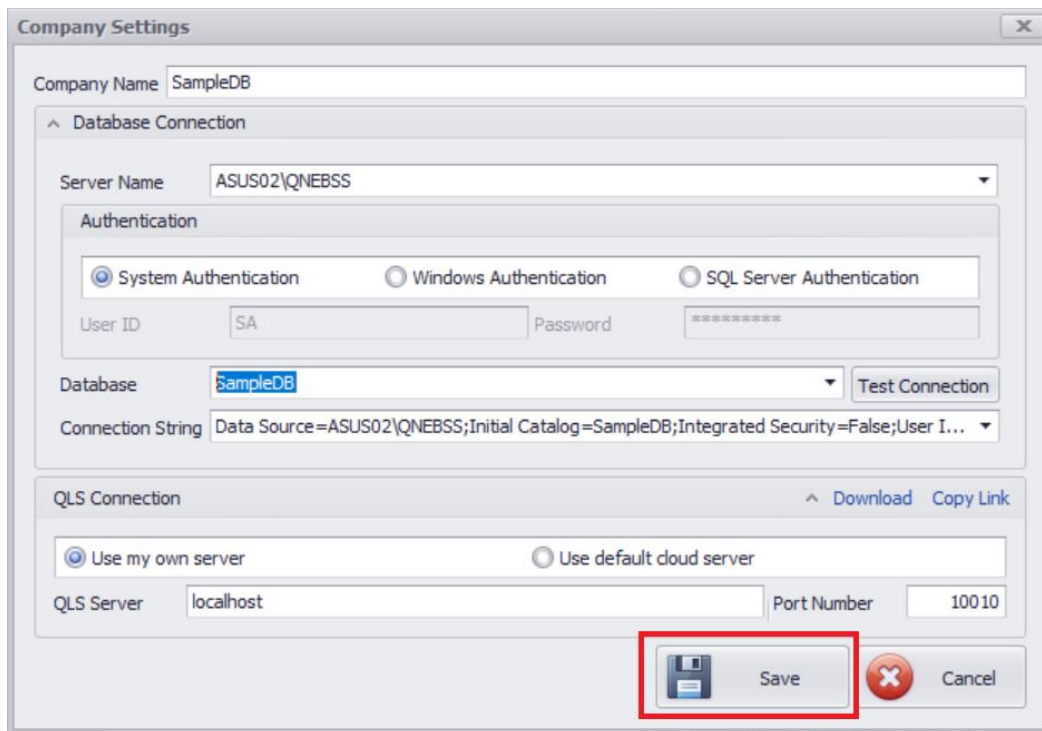
After Locating the Server, it will load all the database then can now proceed on *choosing the database* under Database Dropdown Menu.



After choosing the Database, just click the **Test Connection** Button at the right part of Database Dropdown Menu to check if the Workstation is successfully connected in the Server.



Save your company settings by clicking the save button at the bottom.



Company Settings

Company Name: SampleDB

Database Connection

Server Name: ASUS02\QNEBSS

Authentication: System Authentication Windows Authentication SQL Server Authentication

User ID: SA Password: *****

Database: SampleDB Test Connection

Connection String: Data Source=ASUS02\QNEBSS;Initial Catalog=SampleDB;Integrated Security=False;User I...

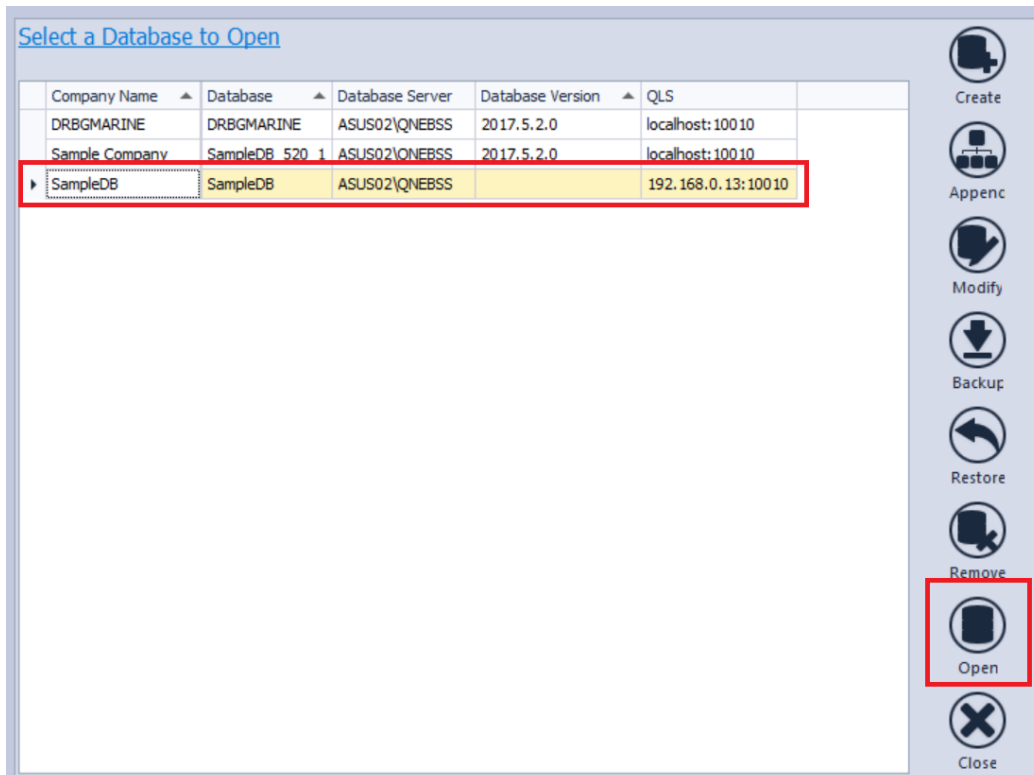
QLS Connection Download Copy Link

Use my own server Use default cloud server

QLS Server: localhost Port Number: 10010

Save Cancel

Select the company then Click Open.



Select a Database to Open

Company Name	Database	Database Server	Database Version	QLS
DRBGMARINE	DRBGMARINE	ASUS02\QNEBSS	2017.5.2.0	localhost:10010
Sample Company	SampleDB 520 1	ASUS02\QNEBSS	2017.5.2.0	localhost:10010
SampleDB	SampleDB	ASUS02\QNEBSS		192.168.0.13:10010

Create

Appenc

Modify

Backup

Restore

Remove

Open

Close

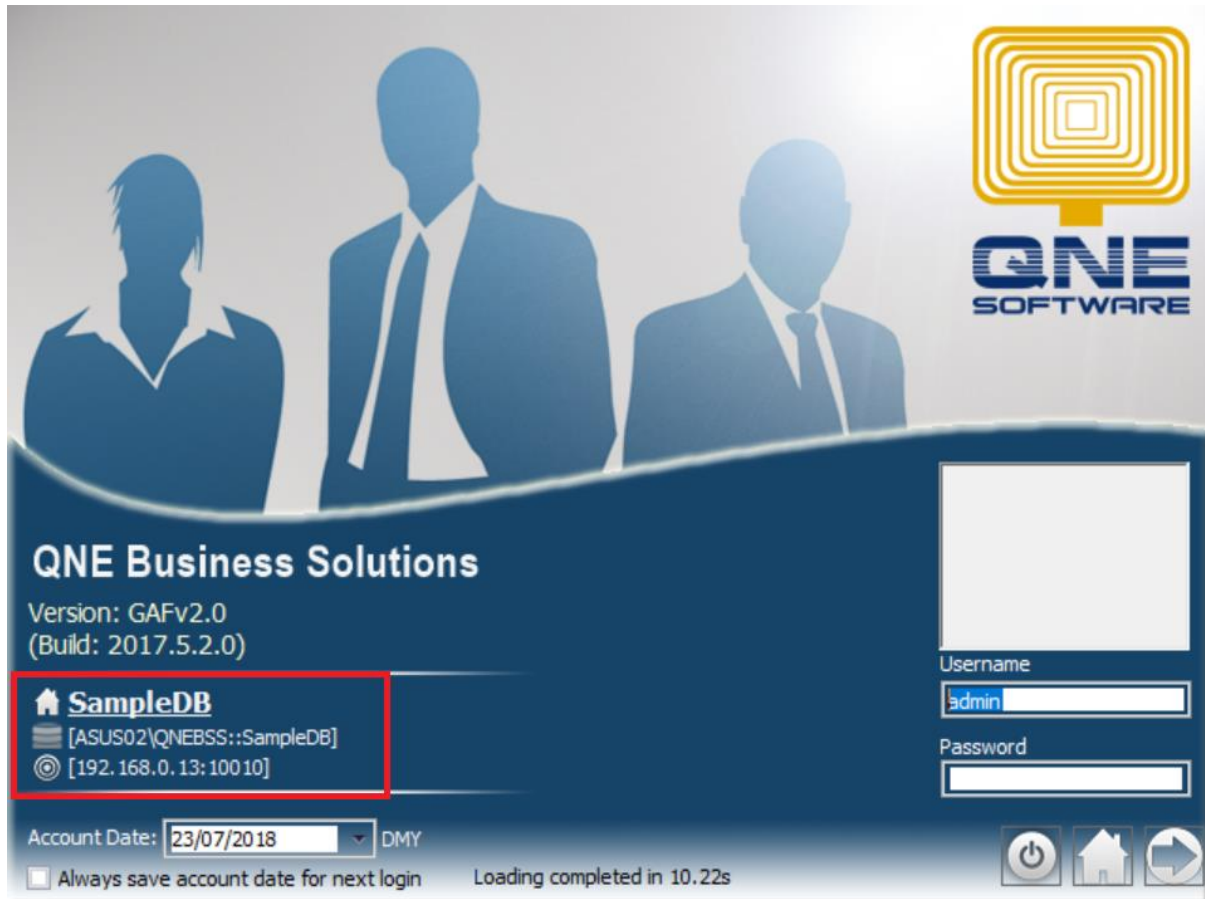
Learn with us.

Grow with us.



QNE KNOWLEDGE BASE

The system will bring you back on the Log In screen. The User in the Workstation can now Access the Appended Company Database. Then **Log-In** using the credentials.



Unit 806 Pearl of the Orient Tower, 1240 Roxas Blvd., Ermita Manila, 1000 Philippines

Tel. No.: +63 2 567-4248, +63 2 567-4253 Fax No.: +63 2 567-4250

Website: www.qne.com.ph

Facebook: <https://www.facebook.com/QnEPH>

Follow our Twitter and Instagram account: @qnesoftwareph