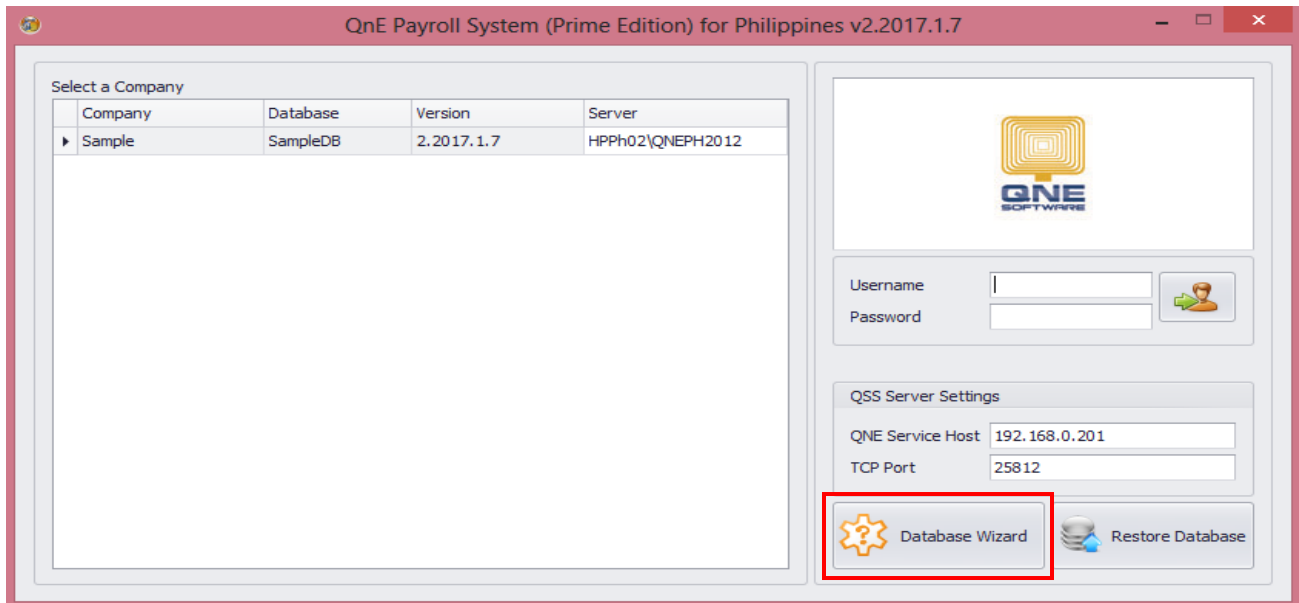


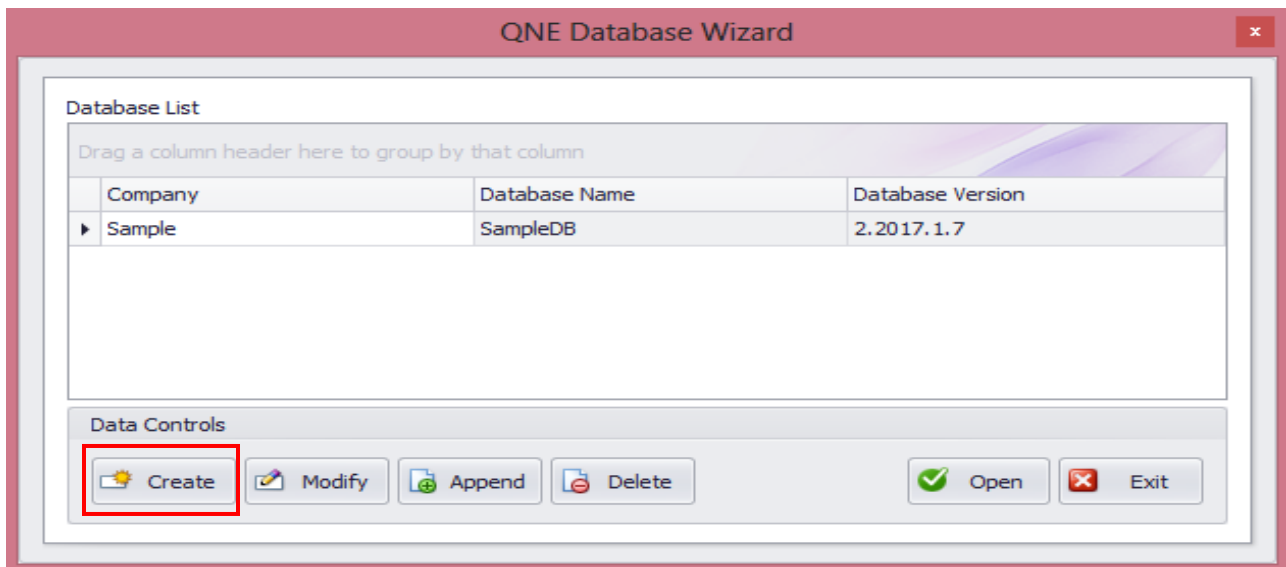


## HOW TO CREATE NEW DATABASE?

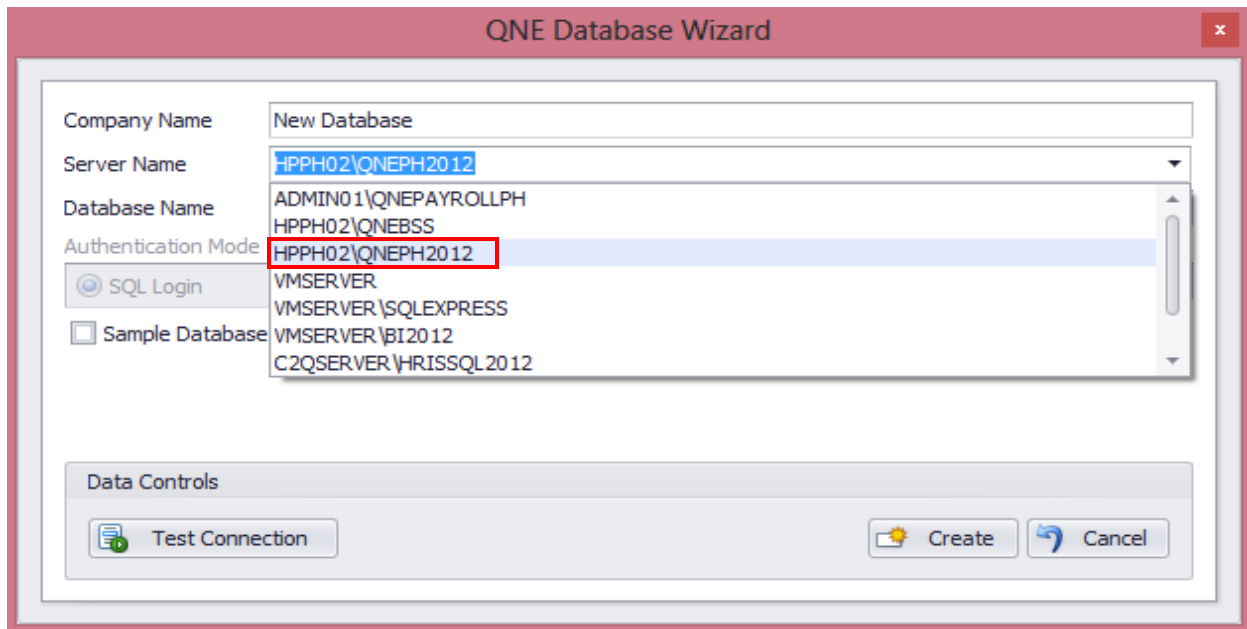
Under Log in form, click Database Wizard



QNE Database Wizard form will show, Click Create.

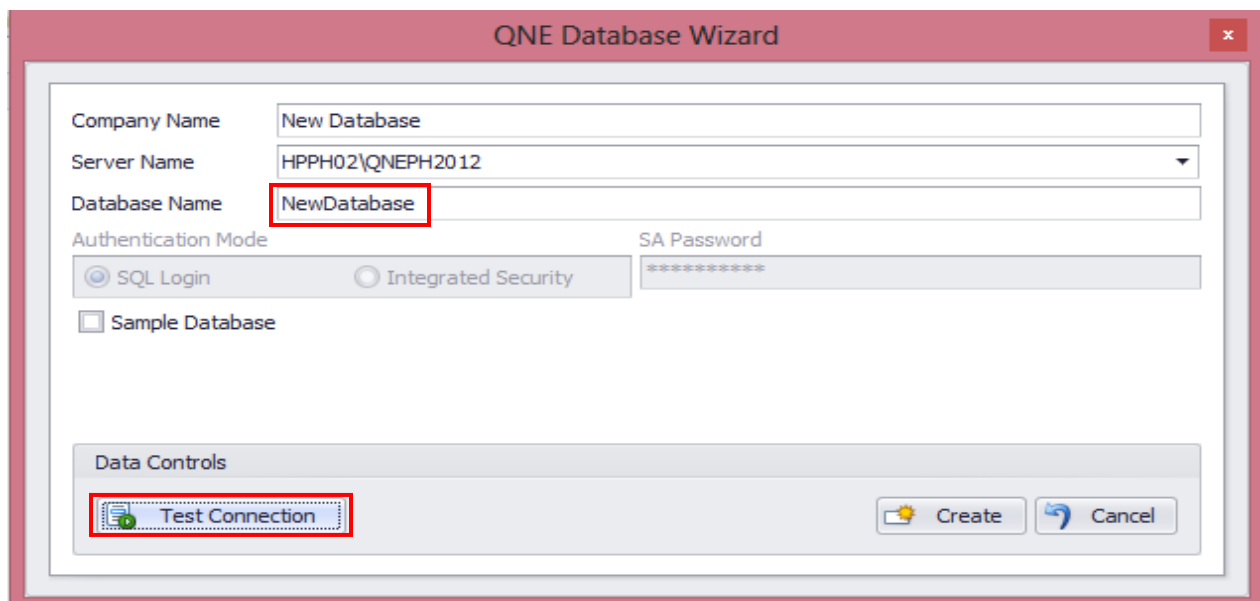


Input Company name and browse Server Name from the drop down (ServerName\QNEPH2012)

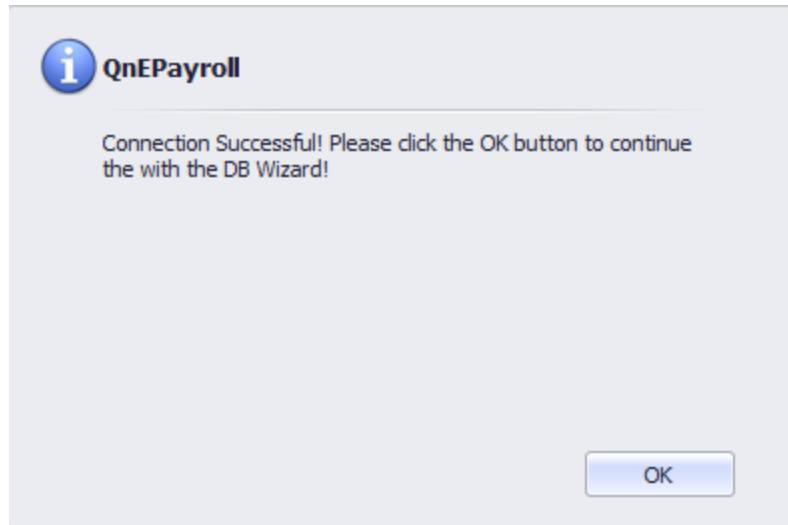


**\*Note:** If not found try using IP address, if still not found search for SQL Configuration Manager and enable protocols. Also, always consider Firewall in browsing through.

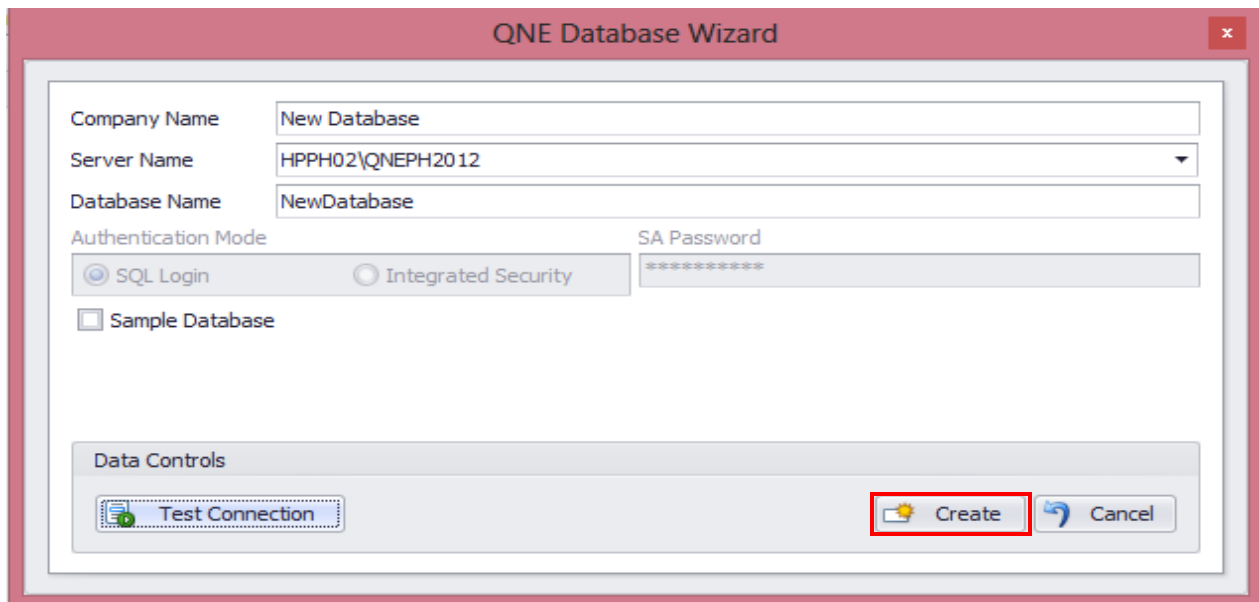
Input Database Name and click Test Connection.



If successful this window will pop-up click OK



Click Create.



Database successfully created.

Notice that Database Version is in lower Version, indicating that the database is not yet updated. So, you need to open the Database to update the Version.

**\*Note:** Opening the Database means updating the Version of the Database.

