



SIMS

helping
schools
inspire



**Producing the
School Workforce Census
2019 Return**

Applicable to 7.188 onwards

Revision History

Version	Change Description	Date
7.188 - 1.0	Initial release.	24/06/2019

© Capita Business Services Ltd 2019. All rights reserved.
No part of this publication may be reproduced, photocopied, stored on a retrieval system, translated or transmitted without the express written consent of the publisher. Microsoft® and Windows® are either registered trademarks or trademarks of Microsoft Corporation in the United States and/or other countries.

Capita Doc Ref: SWC7188/HBK/240619/AW

Providing Feedback on Documentation

We always welcome comments and feedback on the quality of our documentation including online help files and handbooks. If you have any comments, feedback or suggestions regarding the module help file, this handbook (PDF file) or any other aspect of our documentation, please email:

publications@capita.co.uk

Please ensure that you include the module name, version and aspect of documentation on which you are commenting.

C / Contents

01/ Introduction	1
Overview	1
How has the School Workforce Census Changed since Last Year? ..	2
Where to Find More Information.....	3
Where to find School Workforce Specific Information.....	4
Steps to Producing the School Workforce Census	5
02/ Preparing for the School Workforce Census.....	7
Applying the School Workforce Census Licence	7
Setting SIMS Permissions	7
Permissions Required to Run and Edit the Return.....	7
Permissions Required to Import a Revised Fileset	7
Where to find More Information about Permissions.....	8
What Version of SIMS is Required?.....	8
Why Carrying Out a Dry Run?	8
03/ Producing the School Workforce Census	9
Creating a New School Workforce Census.....	9
Configuring the Census Folder	10
Specifying the Security Message for Reports	11
Checking the School Workforce Census Details.....	11
About the School Workforce Census Settings.....	12
Calculating Details	13
Editing School Information	14
Editing Base Pay Details	16
Editing Curriculum Details	18
Recording the Vacancies on Census Day	19
Editing Occasional Teachers Information.....	20
Recording Agency/Third Party Support Staff.....	21
04/ Completing the School Workforce Census.....	23
Creating and Validating the School Workforce Census.....	23
Resolving Validation Errors and Queries	25
Producing Detail Reports	26
Generating Detail Reports.....	31
Printing a Report from your Web Browser	32
Transferring Report Data to a Spreadsheet.....	33
Deleting Temporary Web Browser Files	33
Producing the Summary Report	33

Generating the Summary Report	33
Editing an Unauthorised Return	34
Authorising the School Workforce Census	34
Submitting the Return	36
Retrieving Authorised Census Return Files	37
Copying a Return	38
Deleting an Unauthorised Return	38
Index	41

01 / Introduction

Overview	1
How has the School Workforce Census Changed since Last Year? ...	2
Where to Find More Information.....	3
Steps to Producing the School Workforce Census	5

Overview

The School Workforce Census Return is required to be run by English schools in the maintained sector. These include Pupil Referral Units, Community, Foundation, Voluntary Aided and Voluntary Controlled schools, as well as Academies and Free Schools. This year the return takes place on Thursday 7 November 2019.

This handbook provides the information required by all schools to complete and run the School Workforce Census 2019 Return in SIMS.

NOTE: The contents of the graphics in this handbook (dates, names, etc.) are examples only of what you might expect to see when using SIMS to produce the School Workforce Census.

Data Items Collected in the Return

The following staff member data items are collected:

- Staff details
- Contract details (including the employment start date for the period of employment that applies to each contract)
- Service Agreement details for agency teachers (including the employment start date for the period of employment that applies to each service agreement)
- Payment details for categories of staff

Additional payment data is collected for non-teaching school leaders as well as teachers and teaching assistants. Additional payment data for other support staff is no longer required.
- Absence details for teachers and teaching assistants in regular service, working for schools through a contract (not an agency agreement)
- Curriculum details for teachers and teaching assistants in the timetable cycle in which the census falls (**Secondary and All-Through schools only**)
- Qualification details for (NQF Level 4+) Post A Level.

Qualification data is collected for teachers, teaching assistants and non-teaching school leaders. Qualification data is no longer required for other support staff.

The following school level data items are collected:

- Vacancies
- Occasional teachers
- Third party staff count.

The return collects staff data for both teachers and support staff.

- Teachers and Support Staff with contracts:
 - who are employed by the school via a current contract that has lasted for 28 days or more on 07/11/2019
 - or
 - who are have been employed by the school via a contract for 28 days or more during the period 01/09/2018 to 06/11/2019 inclusive
 - or
 - who are have been employed by the school via a permanent contract or via a contract with a contract end date at least 27 days after the contract start date.
- Teachers with service agreements (agency teachers):
 - who are employed by the school via a current service agreement with a third party on 07/11/2019
 - or
 - who have been employed by the school via a service agreement for 28 days or more during the period 01/09/2018 to 06/11/2019 inclusive.

How has the School Workforce Census Changed since Last Year?

The School Workforce Census 2019 Return includes the following changes.

Key Dates for the School Workforce Census

Routines | Statutory Returns | School Workforce Census

Census date: 07/11/2019

Absence collected from 01/09/2018 to 31/08/2019

Continuous contracts collected from 01/09/2018 to 07/11/2019.

New Vacancy Post

Routines | Statutory Returns | School Workforce Census

The post name **(APP) - Apprentice Teacher** is now available for selection from the **Vacancies on Census Day** panel.



More Information:

Recording the Vacancies on Census Day on page 19

Changes to Staff SWR Posts

The following changes have been made to staff SWR posts.

Staff SWR Post - Code	Staff Category	Status
Apprentice Teacher (APP)	Contracted teacher	Active (New)
Leadership Non Teaching (LNT)	Contracted other support staff	Active (New)
Other Support Staff (OSP)	Contracted other support staff	Active (New)
Support Staff (SUP)	Contracted other support staff	Inactive

The Support Staff (SUP) code has been made inactive but will still be collected and then converted to Other Support Staff (OSP) in the return.

The following data items are not required if the staff SWR post is Other Support Staff (OSP):

- Qualification code
- Subject code
- Category of Additional Payment.

School Workforce Census Filenames

To comply with the DfE requirements, SWC has been removed from the School Workforce Census filenames and replaced with SWF, e.g. 999XXXX_SWF_823LL19_001_Basic_Details.XML.

The filenames affected by this change are the .una, .xml and .int files, as well as all reports (including the validations error summary).



More Information:

Generating Detail Reports on page 31

Generating the Summary Report on page 33

Where to Find More Information

Online help can be accessed by pressing **F1** or clicking the applicable **Help** button in SIMS.

A wide range of documentation is available from the SIMS **Documentation Centre**, including handbooks, quick reference sheets and tutorials. Click the **Documentation** button (located on the top right-hand side of the SIMS **Home Page**), select the required category and then select the document you require. Alternatively, use the **Search** facility to locate the required document.

Documentation is also available from the My Account website (<https://myaccount.capita-cs.co.uk>).

1. Enter the required text in the **Search** field to display a list of documents that match the search criteria.
2. To refine the search further, click **Documents** and then select the required **Document type**, **File type** and/or **Date** range (click **Show more** to view additional options, if required).

Alternatively, click **SIMS Publications** (located in the **Popular Searches** list) to display a list of all SIMS publications.

The search results are displayed automatically.

Tips for using the My Account Search Facility

Here are some key tips for using the search facility in My Account. For additional explanations, please refer to the My Account website.

NOTE: You no longer need to use + / - / "" when searching.

- Cut down on the amount of words that you type in the search field and only use key words, e.g. instead of typing pupil/student showing as a contact search for the word contact.
- Use the **Product Type** filter to refine results further.
- Use the advanced filters located on the left-hand side of the **Search results** page.

Where to find School Workforce Specific Information

In addition to this handbook, a preparation guide (which describes how to prepare your data for the School Workforce Census) and a Validation Errors and Resolutions document (which provides suggestions on how to resolve any validation errors or queries) are available. These guides, together with other useful information, e.g. news items, can be found on the My Account website (<https://myaccount.capita-cs.co.uk>) by using the search facility to find the SWC19 documentation. A list of all associated documentation is displayed, from which the required resources can be selected.

The School Workforce Census 2019 guidance information provided by the DfE is available on the DfE website (<http://www.gov.uk/guidance/school-workforce-census>).

Steps to Producing the School Workforce Census

The process of producing the School Workforce Census can be separated into a number of steps, some of which might need to be repeated to eliminate validation errors and queries.

02/ Preparing for the School Workforce Census

Applying the School Workforce Census Licence	7
Setting SIMS Permissions	7
What Version of SIMS is Required?	8
Why Carrying Out a Dry Run?	8

Applying the School Workforce Census Licence

Applicable to schools using SIMS Personnel in read/write mode

A patch is available from SOLUS (Patch ID 11118) to license the SIMS School Workforce Census functionality.

The patch needs to be applied only once. If you have applied the patch in the past, it is not necessary to re-apply it for this year's return.

Setting SIMS Permissions

The following permissions are applicable to users who deal with returns.

Permissions Required to Run and Edit the Return

To run and edit the School Workforce Census, you must be a member of both of the following user groups in System Manager:

- Returns Manager
- Personnel Officer.

Having these permissions also enables you to correct data related to vacancies, staff and any curriculum information (if applicable) that fails validation.

Permissions Required to Import a Revised Fileset

The Import Fileset functionality enables updates to the Validation Errors Summary and the Summary report (derived from files supplied by the Statutory Body), and detail reports (provided by SIMS), to be imported into SIMS between SIMS releases.

To use the Import Fileset functionality (via **Tools | Setups | Import Fileset**), you must be a member of one of the following user groups in System Manager:

- Returns Manager
- System Manager.

For more information about the Import Fileset functionality, please refer to the applicable preparation guide, which is available via the SIMS **Documentation Centre**. Click the **Documentation** button located on the top right-hand side of the SIMS **Home Page**. Preparation guides are also available on the My Account website (<https://myaccount.capita-cs.co.uk>).

Where to find More Information about Permissions

Please contact your System Administrator/Manager if you are not sure whether you have the required permissions. For more information, please refer to the *Managing SIMS Users, Groups and Databases* handbook.

An Excel spreadsheet describing the numerous permissions available in SIMS is available on the My Account website (<https://myaccount.capita-cs.co.uk>).

To find the spreadsheet, search for <sims version> sims permissions, e.g. 7.188 sims permissions.

What Version of SIMS is Required?

To run the return, you must have the SIMS 2019 Summer Release (7.188) or later installed.

To check which version of SIMS is installed, open SIMS and then select **Help | About SIMS**. A dialog similar to the one shown in the following graphic is displayed.

The version should read 7.188 or later.



Why Carry Out a Dry Run?

Once the SIMS 2019 Summer Release (7.188) has been installed, you can carry out one or more dry runs of the School Workforce Census. It is advisable to do this as early as possible, even if you know that your data has not yet been fully prepared or checked. The purpose of the dry run is to produce the Validation Errors Summary, which details the corrections that need to be made to your data.



More Information:

Creating and Validating the School Workforce Census on page 23
Producing Detail Reports on page 26



Additional Resources:

Preparing for the School Workforce Census 2019 Return guide
School Workforce Census 2019 Validation Errors and Resolutions guide

03/ Producing the School Workforce Census

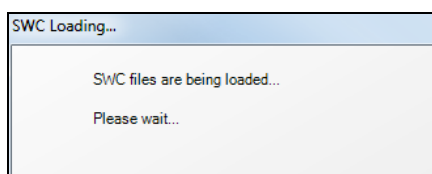
Creating a New School Workforce Census	9
Checking the School Workforce Census Details.....	11
Calculating Details	13
Editing School Information	14
Editing Base Pay Details	16
Editing Curriculum Details	18
Recording the Vacancies on Census Day	19
Editing Occasional Teachers Information.....	20
Recording Agency/Third Party Support Staff	21

Creating a New School Workforce Census

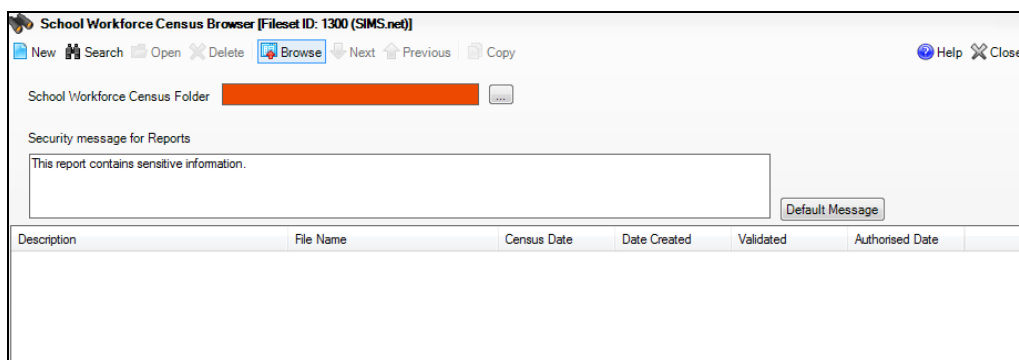
Before creating a new School Workforce Census return, ensure that all staff and school information is present and accurate in SIMS.

It is possible to create more than one test return, i.e. dry runs. This enables you to check that all data required for the return exists and is up-to-date. Information can then be added or updated, if necessary, before running the final return. Any unwanted returns can be deleted, provided they have not been authorised.

1. Select **Routines | Statutory Returns | School Workforce Census** to load the School Workforce Census validation and reporting files.



When the files are loaded, the **School Workforce Census** browser is displayed. The Fileset ID is displayed in the browser header (for information purposes only).



2. Ensure that the **School Workforce Census Folder** is selected correctly and that the required **Security message for Reports** is specified, as described in the following sections.

Configuring the Census Folder

Before creating a return, the folder in which the return file will be saved must be specified.

IMPORTANT NOTES: Due to the sensitive nature of some of the data stored in SIMS, careful consideration must be given when specifying the location of any folder into which you save sensitive data, e.g. census returns, imported and exported CTFs, etc.

You should be mindful of your school's responsibilities with respect to information security. Consider which users have access to the chosen folder, especially if the folder is shared on a server. Please refer to the government website for more information about securing your information (<https://www.gov.uk/service-manual/technology/securing-your-information>). If you are in any doubt, you should consult with your IT Security Officer before proceeding.

The General Data Protection Regulation (GDPR), which replaces the Data Protection Act 1998, is a directive for certain safeguards regarding the use of personal data. It is important that schools process all data (not just the data collected for the school census) in accordance with the full requirements of the GDPR.

Further information on the GDPR can be found on the Guide to the General Data protection Regulations (GDPR) page of the Information Commissioners Office (ICO) website (<https://ico.org.uk/for-organisations/guide-to-the-general-data-protection-regulation-gdpr>).

1. In the **School Workforce Census Folder** field, enter the location of the folder where the return files are to be stored.

Alternatively, click the **Browse** button to display the **Browse For Folder** dialog.



Browse button

2. Navigate to the location of the required folder and highlight it. If a suitable folder does not exist, click the **Make New Folder** button, then enter a suitable name for the new folder.

IMPORTANT NOTE: If you are changing the location of the folder, ensure that authorised personnel only have access to the new folder, as the folder will contain sensitive data. For more information, please see the important note at the beginning of this section.

3. Click the **OK** button.
A message dialog requests confirmation that you want to continue.
4. Click the **OK** button to select or create the folder and return to the browser, where the new folder name is displayed.
5. Ensure that the **Security Message for Reports** is appropriate for your school.

Specifying the Security Message for Reports

At the bottom of the browser is the **Security message for Reports** field. This text displayed in this field is included in the header of each report.

1. The default text (**This report contains sensitive information**) can be edited, if required.
2. If any edits are made, you can click the **Default Message** button to revert to the original default text.
3. Click the **New** button to display the **School Workforce Census Details** page.

Checking the School Workforce Census Details

The **School Workforce Census Details** panel displays key collection dates for the return. These dates are read-only and cannot be edited.

Census Date: 07/11/2019

Absence Start Date: 01/09/2018

Absence End Date: 31/08/2019

Continuous Contracts Start Date: 01/09/2018

Continuous Contracts End Date: 07/11/2019.

1 School Workforce Census Details

Calculate All Details

Census Date: 07/11/2019

Absence Start Date: 01/09/2018

Continuous Contracts Start Date: 01/09/2018

School Workforce Census Description: School Workforce Census 2019

Absence End Date: 31/08/2019

Continuous Contracts End Date: 07/11/2019

School Workforce Census Settings

Staff Workforce Area

- Staff Details
- Contract Details
- Service Agreement Details
- Absences
- Curriculum
- Qualifications

School Area

- Vacancies
- Occasional Teachers Information
- Agency / Third Party support staff

1 The **Calculate All Details** button is displayed in certain circumstances only (please see *Calculating Details* on page 13).

2 The Curriculum option is displayed for Secondary and All-Through schools only.

By default, the return **Description** is displayed as **School Workforce Census 2019**. The description can be edited, if required. This can be particularly useful when attempting to distinguish between dry runs and actual returns.

*NOTES about the **Calculate All Details** button:*

*In all non-Secondary/All-Through schools (including Pupil Referral Units), this button is used to calculate pay details. If the **Allow editing of Base Pay** check box is deselected (via **Tools | Statutory Returns Tools | School Workforce Census Settings**) the button is not required and is therefore not displayed.*

*In Secondary and All-Through schools this button is used to calculate curriculum details for teachers and teaching assistants. Pay details are also calculated provided that the **Allow editing of Base Pay** check box has been selected via **Tools | Statutory Returns Tools | School Workforce Census Settings**.*

If applicable click the **Calculate All Details** button to extract the data held in SIMS then populate the applicable panels on the **School Workforce Census Details** page.

About the School Workforce Census Settings

The **School Workforce Census Settings** panel displays a read-only list of all possible data items that can be collected in the return. A selected check box indicates that the associated data item is collected.

School Workforce Census Settings	
Staff Workforce Area	School Area
<input checked="" type="checkbox"/> Staff Details	<input checked="" type="checkbox"/> Vacancies
<input checked="" type="checkbox"/> Contract Details	<input checked="" type="checkbox"/> Occasional Teachers Information
<input checked="" type="checkbox"/> Service Agreement Details	<input checked="" type="checkbox"/> Agency / Third Party Support Staff
<input checked="" type="checkbox"/> Absences	
<input checked="" type="checkbox"/> Curriculum	
<input checked="" type="checkbox"/> Qualifications	

*NOTE: The **Curriculum** check box is displayed for Secondary and All-Through schools only, indicating whether curriculum details for teachers and teaching assistants will be included in the return.*

An option to **Allow editing of Base Pay** before the pay details are collected is also available. If selected the **Pay Details** panel is displayed on the **School Workforce Census Details** page when creating the return. This panel displays the calculated values of **Base Pay** for each school workforce member of staff. The values can be edited, if required.

Changes to the settings may be required if:

- your school does not record contract/service agreements because these are provided by your Local Authority. Some Local Authorities may supply contract details from an HR/Payroll system.
- SIMS Personnel is not used to record contract/service agreements but they are recorded in a different system.
- the editing of Base Pay is required before the pay details are collected for the return.

The Returns Manager can change the School Workforce Census settings via **Tools | Statutory Return Tools | School Workforce Census Settings**. These settings are preserved when SIMS is upgraded but can be edited, if required.



Additional Resources:

The *Changing the School Workforce Census Settings* section in the *Preparing for the School Workforce Census 2019 Return* guide.

Calculating Details

The Calculate All Details routine extracts the required information from SIMS and displays the results in the applicable panels on the **School Workforce Census Details** page. This routine does not populate the **Vacancies on Census Day**, **Occasional Teachers on Census Day** and **Agency/Third Party support staff** panels.

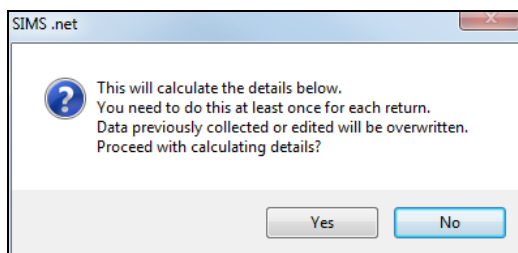
*NOTES about the **Calculate All Details** button: In all non-Secondary/All-Through schools including Pupil Referral Units, this button is used to calculate pay details. If the **Allow editing of Base Pay** check box is deselected (via **Tools | Statutory Returns Tools | School Workforce Census Settings**) the button is not required and is therefore not displayed.*

*In Secondary and All-Through schools this button is used to calculate curriculum details for teachers and teaching assistants. Pay details are also calculated provided the **Allow editing of Base Pay** check box has been selected via **Tools | Statutory Returns Tools | School Workforce Census Settings**.*

If the **Calculate All Details** button is displayed, you must calculate all details at least once for each return.

1. Click the **Calculate All Details** button located in the **School Workforce Census Details** panel.

A warning is displayed explaining that any data previously collected or edited will be overwritten.



2. Click the **Yes** button to calculate the details (and overwrite any data collected or edited previously).

Progress is reported on the Status Bar at the bottom of the screen. When complete, the applicable panel(s) is populated with the data extracted from SIMS.

3. The return can be saved at any point by clicking the **Save** button.

WARNING: If you use the Calculate All Details routine again, any manual changes that have been made in the calculated panels are overwritten and must be re-entered.

Editing School Information

The **School Information** panel displays read-only information that has been recorded on the **School Details** page of SIMS (**Focus | School | School Details**).

The **Previous Name** and **Date Name Changed**, **Previous Estab Number** and **Earliest DOA** (date of admission), **Previous URN** and **Date Number Changed** fields are displayed for all schools. However, the fields are populated only if the information is relevant to your school, e.g. your school has converted to an Academy, and has been entered on the **School Details** page.

The **School Information** should always be checked.

1. If any details are missing or incorrect, click the **School Detail** button to display the **School Detail** dialog, where information applicable to your school is displayed.

School Detail

School Details - WATERS EDGE PRIMARY SCHOOL

Save Undo Help

1 Establishment 2 Address 3 Contact Details 4 Sites 5 Documents 6 Childcare

1 Establishment

School Name: WATERS EDGE PRIMARY SCHOOL

LA: 823 Central Bedfordshire

Establishment Number: 2999

Unique Reference Number: 123564

School Phase: Primary

School Type: Infant and Junior School 5-11

School Governance: Community

Intake Type: Comprehensive

Previous School Name:

Previous Estab Number:

Previous URN Number:

Boarding Pupils: Nursery Class

Head Teacher: Mrs Gillian Grosvenor

Curriculum Years: N1 6

Pupil Genders: Coeducational

Date Name Changed:

Earliest DOA:

Date Number Changed:

Special Class or Unit:

Main Contact: Mrs G Grosvenor

OK Cancel

2. Add or amend the school details, selecting from the drop-down lists, where applicable.

NOTE: The **Establishment Number** and the **School Phase** cannot be edited. If the information displayed is incorrect, please contact your Local Support Unit.

Information for Academies:

Academies should ensure that the following information is recorded, if applicable:

- The **School Type** and **School Governance**.
Select **Academies** from the applicable drop-down lists.
- The school's **Previous Name** and **Date Name Changed**.

- The **Previous Estab Number** and **Earliest DOA** (date of admission).
If the establishment number (DfE number) has changed for sponsor-led Academies, historical information is not collected and the earliest date of admission is reported as the date the DfE number changed. This date is collected in the School Census return.
- The **Previous URN Number** and **Date Number Changed**.

IMPORTANT NOTE: *These data items must be entered for all Academies because the date the URN changed is interpreted as the date the Academy opened. If this date is not entered, some of the historical information from before that date will be included in the School Workforce Census incorrectly, e.g. a member of staff who left before the Academy opened.*

3. Click the **Save** button, then click the **OK** button to return to the **School Workforce Census Details** page, where the updated details are displayed.

Editing Base Pay Details

Base pay is the pre-tax annual salary of a member of staff as at census day. It does not include the annual amount of any additional payments or allowances. In other words it is the annual salary that will be earned, based on the salary rate at the census date.

Base pay is not collected for staff paid by a daily rate.

IMPORTANT NOTE: *The **Pay Details** panel is visible only if your Returns Manager has selected the **Allow editing of Base Pay** check box via **Tools | Statutory Returns Tools | School workforce Census Settings**.*

The pay details are retrieved/calculated from SIMS Personnel and displayed in the **Pay Details** panel, where the base pay can be edited, if required, e.g. Academies that do not use the National Pay Scales might need to edit the pay details.

The base pay value recorded in SIMS Personnel is collected in the School Workforce Census, unless the value is edited in the **Pay Details** panel. If the value is edited, the new value is collected instead.

- For existing pay scales, base pay is still reported as the pay award amount on census day.
- For converted or new pay ranges, base pay is reported as the actual salary on census day.

The panel is populated when the **Calculate All Details** button is clicked (please see *Calculating Details* on page 13).

3 Pay Details Edited values will be collected in the return

Non-Leadership

Staff Name	Post	Scale/Range	Region	Base Pay
Abdullah Saadaa	TCM	TE	EW	25594
(AA) - Abell Anita	TCU	TU	EW	36646
(SA) - Andrews Selina	TCM	TE	EW	35008
Ansar Zaidan	TCU	TU	EW	22217.72
(DA) - Asher Dawn	SUP	NJ		5320
(JA) - Atkinson John	TCM	TE	EW	35008
(ABY) - Batchley Andrea	SUP	NJ		17391
(JB) - Brown James	LDP	LP	EW	38215
(PB) - Brown Paul	TCM	TE	EW	35008
(KB) - Burrows Katie	TCM	TE	EW	35008

Recalculate

Leadership (Teachers)

Staff Name	Post	Scale/Range	Region	Minimum	Maximum	Pay Framework	Base Pay
(MA) - Anderson Mary	AHT	LD	EW	60755	83528	Pre 2014	60755
(AB) - Blacker Adrian	HDT	LD	EW	60755	83528	Pre 2014	75735
(SD) - Dumbell Steven	DHT	LD	EW	60755	83528	Pre 2014	63806
(RH) - Hatchett Ruth	DHT	LD	EW	60755	83528	Pre 2014	63806

Recalculate

*NOTES: It is possible for a staff member's name to be displayed twice, e.g. a classroom assistant who is also a playground assistant would be displayed twice in the **Non-Leadership** panel.*

*Regional pay range (**Region**) is no longer collected for the return but is displayed for information purposes only.*

Non-Leadership

The **Base Pay** (retrieved from SIMS Personnel) can be edited, if required. Base pay does not include benefits, bonuses or any other reward from the employer.

Leadership

- The **Minimum** and **Maximum** pay range (calculated from SIMS Personnel) can be edited, if required.
Each leadership teacher has a basic salary range within which they can expect to be paid while they remain in the same post at the same school.
- The **Pay Framework**, under which the Leadership teachers are paid, is calculated from SIMS Personnel but can be edited, if required. Select from the drop-down list:
 - Pre 2014** framework (for contracts with a start date before 01/09/2014).
 - 2014** framework (for contracts with a start date from 01/09/2014).
- The **Base Pay** (retrieved from SIMS Personnel) can be edited, if required.

Recalculate

If you wish to recalculate all pay details in the **Pay Details** panel for either Non-Leadership or Leadership teachers, click the adjacent **Recalculate** button.

IMPORTANT NOTE: Clicking the **Recalculate** button recalculates all pay details for teachers, teaching assistants and support staff. All information previously saved or edited is lost when performing this routine.



Additional Resources:

Changing the School Workforce Census Setting section of the *Preparing for the School Workforce Census 2019 Return* handbook

Editing Curriculum Details

Applicable to Secondary and All-Through Schools only

NOTES: To minimise the manual correcting of staff details, you may wish to run the Create and Validate routine before editing the **Curriculum for Teachers and Teaching Assistants** panel (please see Creating and Validating the School Workforce Census on page 23).

The **Curriculum for Teachers and Teaching Assistants** panel is only populated if the timetable has been transferred from Nova-T into the relevant academic year in SIMS and if the subject codes have been mapped to DfE subjects. For more information, please refer to the *Preparing for the School Workforce Census 2019 Return* handbook.

Records can be added manually to this list. For example, some staff may teach outside of the normal timetable, e.g. special support units, and will not be included here.

Please note that the description of the method used to calculate the hours is based on the DfE specification.

Staff Name	General Subject	Hours Taught	Year Group Taught
(AA) - Abell Anita	(ENG) - English	37.5	Curriculum Year 11
(JB) - Brown James	(ECO) - Economics	37.5	Curriculum Year 12
(SA) - Andrews Selina	(BIO) - Biology / Botany / Zoology / Ecology	15	Curriculum Year 12

Recalculate
 New
 Delete

All subjects from the timetable cycle in which census day falls are included.
 NB: Hours Taught is based on the following: (Hours Taught in cycle / Days in cycle) * 5

1. Click the **New** button to display an additional row in the **Curriculum for Teachers and Teaching Assistants** panel.
2. Click the **Staff Name** cell, then select the required member of staff from the drop-down list.

IMPORTANT NOTE: When a member of staff has been recorded in SIMS as a teacher or teaching assistant, SIMS must be restarted for their name to be available for selection from the **Staff Name** drop-down list.

- Click the **General Subject** cell, then select the required subject, e.g. **(ENG) - English**, from the drop-down list.

NOTE: The subject codes displayed are the DfE subject codes, not the school's timetable subject codes.

- Enter the number of **Hours Taught**.

NOTE: Records are required on hours per National Curriculum Year group basis.

- Click the **Year Group Taught** cell, then select the required National Curriculum Year from the drop-down list.

To permanently delete a manually entered record that is no longer required, highlight the line and then click the **Delete** button.

Records displayed in the **Curriculum for Teachers and Teaching Assistants** panel that are held in SIMS can be deleted temporarily but are displayed again when the **Recalculate** or **Calculate All Details** button is clicked.

Recording the Vacancies on Census Day

The **Vacancies on Census Day** panel enables you to add any current job vacancies for all teachers (qualified and unqualified) that exist in your school. This information is not stored in SIMS so it must be added manually.

In a Local Authority Maintained school, a teacher vacancy is one where the applicant is expected to have either Qualified Teacher Status (QTS) or to be an Overseas Trained Teacher.

In Academies and Free Schools, QTS is not required for teaching posts but these schools must return data on teaching post vacancies, which if they occurred in a Local Authority Maintained school, would be filled by teachers with QTS or those who were Overseas Trained Teachers.

Each QTS (permanent or a contract of one or more terms) that is vacant or temporarily filled on census day must be recorded. A vacant or temporarily-filled post is defined as one that fulfils any of the following criteria:

- The vacant post is not covered.
- The post is covered temporarily by other staff within the school.
- The post is covered by a teacher on a contract of less than one term.
- The post is covered by a teacher on a contract of between one and three terms (except if the incumbent is on recognised long-term absence, such as maternity leave).

The following posts should be included:

- Posts that the school has tried to fill but have not been filled on census day.
- Posts where an appointment has been made but the appointee is not in the post on census day.
- Posts for all types of teachers, from classroom teachers to head teachers.

IMPORTANT NOTE: Posts that will become vacant after census day (e.g. where a teacher has resigned but is serving notice) should not be included.

5 Vacancies on Census Day

Post Number	Post Name	General Subject	Tenure	Temporarily Filled	Advertised	
1	(TCH) - Classroom Teach...	(CHM) - Chemistry	Full Time	Yes	Yes	New Delete
2	-Select>	-Select>				

Description

- (AHT) - Assistant head
- (APT) - Apprentice Teacher
- (DHT) - Deputy head
- (EXH) - Executive Head Te...
- (HDT) - Head teacher
- (LDP) - Leading Practitioner
- (TCH) - Classroom Teacher
- (TCM) - Classroom Teache...
- (TCU) - ClassroomTeache...
- x

1. Click the **New** button to add a new vacancy.
The **Post Number** is read-only and increments automatically when vacancies are added to the list.
2. Click the **Post Name** cell then select the required description from the drop-down list, e.g. **(LDP) - Leading Practitioner**.
3. Click the **General Subject** cell then select the required description from the drop-down list, e.g. **(PRI) - Primary Curriculum**, **(CHM) - Chemistry**, etc. depending on the school phase.
4. Indicate the **Tenure** of the vacancy by clicking the cell and selecting **Full Time** or **Part Time** from the drop-down list.
5. Indicate whether the vacancy has been **Temporarily Filled**, by clicking the cell then selecting **Yes** or **No** from the drop-down list.
6. Indicate whether the post has been **Advertised**, by clicking the cell then selecting **Yes** or **No** from the drop-down list.

NOTE: The record can be saved only if all of the data has been entered.

To delete a vacancy, highlight the record then click the **Delete** button.

Editing Occasional Teachers Information

An example of an Occasional Teacher is a supply teacher who is in school on census day but is not in regular service (i.e. less than 28 days).

The **Occasional Teachers on Census Day** panel enables you to enter the number of occasional teachers in the following categories:

- Number of Occasional Teachers With QTS
- Number of Occasional Teachers Without QTS

- Number of Occasional Teachers Where QTS is Not Known.

Category Description	Count	
Number of Occasional Teachers With QTS	0	
Number of Occasional Teachers Without QTS	0	
Number of Occasional Teachers Where QTS Not Known	0	
Number of Occasional Teachers (Total)		0

The **Number of Occasional Teachers (Total)** is read-only but updates automatically as the **Count** column is completed.

Recording Agency/Third Party Support Staff

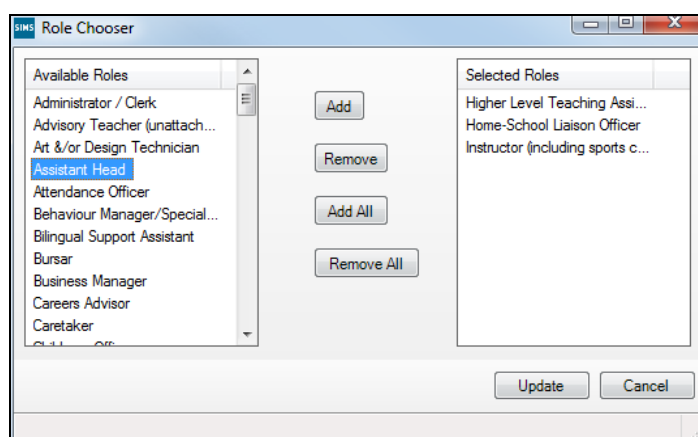
Schools are required to provide the number of occasional support staff who are not directly employed by the school/LA on census day. These members of staff are likely to be employed through an agency/third party company, for example food services staff working for a catering company or occasional staff who work for an agency.

The **Agency/Third Party support staff** panel enables you to record the number of positions in your school that are filled by agency/third party support staff on census day.

Role	Count
Number of Agency / Third Party support staff (Total)	

New
Delete

- Click the **New** button to display the **Role Chooser** dialog.



2. Highlight the relevant position(s) in the **Available Roles** panel then click the **Add** button to move them into the **Selected Roles** panel.
Alternatively, click the **Add All** button to move all the **Available Roles** into the **Selected Roles** panel then **Remove** any roles not required.
If you wish to make your selections again, click the **Remove All** button to clear the **Selected Roles** panel and repopulate the **Available Roles** panel.
3. When the required roles have been selected, click the **Update** button to return to the **Agency/Third Party support staff** panel, where the selected **Roles** are displayed.
4. In the **Count** column, enter the number of third party staff who fill each of the roles.

The screenshot shows a software interface titled "Agency / Third Party support staff". It contains a table with two columns: "Role" and "Count". The table has three rows: "Higher Level Teaching Assistant" with a count of 4, "Home-School Liaison Officer" with a count of 2, and "Instructor (including sports coach)" with a count of 0. The "Instructor" row is highlighted in blue. To the right of the table are two buttons: "New" (with a plus icon) and "Delete" (with a red X icon). Below the table is a read-only field labeled "Number of Agency / Third Party support staff (Total)" with the value 6.

Role	Count
Higher Level Teaching Assistant	4
Home-School Liaison Officer	2
Instructor (including sports coach)	0

Number of Agency / Third Party support staff (Total) 6

The **Number of Agency/Third Party support staff (Total)** is read-only but updates automatically as the **Count** column is completed.

04 / Completing the School Workforce Census

Creating and Validating the School Workforce Census	23
Resolving Validation Errors and Queries	25
Producing Detail Reports	26
Generating Detail Reports.....	31
Printing a Report from your Web Browser	32
Transferring Report Data to a Spreadsheet.....	33
Deleting Temporary Web Browser Files	33
Producing the Summary Report	33
Editing an Unauthorised Return	34
Authorising the School Workforce Census	34
Submitting the Return	36
Retrieving Authorised Census Return Files	37
Copying a Return	38
Deleting an Unauthorised Return.....	38

Creating and Validating the School Workforce Census

A School Workforce Census Return must be validated and authorised before it can be uploaded to the DfE COLLECT data collection website or sent to your LA, depending on the instructions you have been given.

Validating the return creates an unauthorised School Workforce Census Return file, which is then validated against a set of DfE rules. Once the validation is complete, a list of errors and queries is displayed.

An error is caused by either missing or inaccurate data, whilst a query highlights data that is unusual or not as expected, e.g. staff member's age falling outside the expected range.

When the return has been validated, detail reports can be produced as an aid to resolving any issues (please see *Producing Detail Reports* on page 26).

1. Select **Routines | Statutory Returns | School Workforce Census** to display the **School Workforce Census Browser**.
2. Search for then double-click the required return to display the **School Workforce Census Details** page.
3. Click the **Create & Validate** button to start the Create and Validate process, which might take some time depending on the number of staff at your school.

If the value for historical spot allowances has not been specified, the **Historical Allowances** dialog is displayed. For your historical spot allowances to show correctly, you must indicate whether they have been entered as an actual or an annual amount.

04/ Completing the School Workforce Census

- a. Click the **OK** button to close the **Historical Allowances** dialog.
 - b. Select **Tools | Setups | Employment Parameters** to display the **Employment Parameters** page.
 - c. In the **Historical Spot Allowance Type** panel, select either the **Actual** or **Annual** radio button.
 - **Actual** - for example, if you wanted to report a Spot Allowance of £100 it is calculated as follows:
Actual allowance x pay factor, e.g. £100 x 1 = £100
 - **Annual** - for example, if you wanted to report a Spot Allowance of £100 it is calculated as follows:
(Annual allowance x pay factor)/12 x applicable months, e.g.
£1200 x 1 ÷ 12 x 1 = £100
 - d. Click the **Save** button.
 - e. Return to the **School Workforce Census Details** page and then click the **Create & Validate** button again.
4. Run the Workforce Member Allowances Details report and then check the data in the following columns:
- **SWC Additional Payment Amount** (the value collected in the return)
 - **Allowance Annual Amount**
 - **Applicable Months**.

If a hyphen (-) only is displayed in the **Allowance Annual Amount** and **Applicable Months** columns, this is an indication that the **SWC Additional Payment Amount** is a spot allowance that has been entered as an actual amount.

School Workforce Census - 2019 (Workforce Member Allowance Details)												
Security Message : This report contains sensitive information.												
Report Criteria: Contracted Teachers, Agency Teachers, Contracted Teaching Assistants, Other Contracted Support Staff (excludes Teaching Assistants/Other Support Staff who only have service agreements)												
<ul style="list-style-type: none"> • SNAPSHOT DATA - staff in regular service on census day 07/11/2019 with allowances • Permanent and temporary allowances - SWC Additional Payment Amount is derived from ((Annual allowance x pay factor)/12) x applicable months • Spot allowances - The SWC Additional Payment Amount is actual amount • Historical spot allowances (recorded before the Spring 2016 release) <ul style="list-style-type: none"> • Actual - If historical spot allowance type is set as Actual then SWC Additional Payment Amount is the actual amount • Annual - If historical spot allowance type is set as Annual then SWC Additional Payment Amount is derived from (Annual allowance x pay factor)/12 x applicable months • For Agency Teachers not on daily rate SWC Base Pay and SWC Additional Payment Amount are derived directly from the service agreement • Payment date is assumed to be the 28th of the month 												
Total number of staff = 2												
School Name: WATERS EDGE PRIMARY SCHOOL			Fileset Number: 1300 (SIMS.net)									
Filename: 8232999_SWF_823LL19_001.INT			Report Created: 16/05/2019 14:00:59									
XML Version: not used												
Surname	Forename	NI Number	Contract/ Service Agreement Type	Post	Role	Additional Payment Type	Start Date	End Date	SWC Additional Payment Amount	Allowance Annual Amount	Allowance Pay Factor	Applicable Months
Hills	Victoria	WE56775A	Permanent	Classroom Teacher, main pay range	Classroom Teacher	Other	19-04-2017	-	175.00	175.00	1.0000	12
Holyoake	Gerald	NB123243D	Permanent	Classroom Teacher, main pay range	Classroom Teacher	First and second Teaching and Learning Responsibility Payments, aka	01-09-2018	-	7853.00	7853.00	1.0000	12

Historical spot allowances recorded before the SIMS 2017 Spring Release:

- **Actual** - if the historical spot allowance type is specified as actual, the School Workforce Census additional payment amount is the actual amount.
- **Annual** - if the historical spot allowance type is specified as annual, the School Workforce Census additional payment amount is derived from (annual allowance x pay factor)/12 x applicable months.

Resolving Validation Errors and Queries

After creating the return file and validating the data, any errors and queries found are listed in the **Validation Errors Summary** panel at the bottom of the **School Workforce Census Details** page.

Type	Error Number	Error Message	Individual Data Item	Solution
F	30	Year out of range.		# Go to Routines Statutory Returns Schools Workforce Census and correct Census Date
F	40	Reference Date, i.e. Census Reference Date, must be provided. - 2016-11-03		# Go to Routines Statutory Returns Schools Workforce Census and add Census Date
F	6210	Qualification Code is missing.	Teacher Number: 88867101 NI Number: YK52981081	# Go to Focus Person Staff Professional Details and add Qualification Code
F	4155	Temporary NI Numbers must not be supplied. This should be replaced or removed.	Teacher Number: 1 NI Number: NT101649C1 Name: F1	# Go to Focus Person Staff Personnel Details and amend or remove NI Number
F	4220	Ethnicity is missing or invalid.	Teacher Number: 97734521 NI Number: NB945544D1	# Go to Focus Person Staff Personnel Details and correct Ethnicity
F	4760	FTE Hours per week is missing.	Teacher Number: 1 NI Number: NB616090C1 Name: V1	# Go to Focus Person Staff Employment Details and add FTE Hours
Q	6550Q	At least one staff record in this school's return should show a role of SENCO (SEN Co-ordinator).		Go to Focus Person Staff Employment Details and check that there is one member of staff
Q	7240Q	Please note that this return contains no vacancy records. Please ensure that this is correct.		# Check number of Vacancies in Vacancies Panel
Q	4516Q	Please check: Teacher does not appear to have had a pay review since before beginning of previous.	Teacher Number: 68712491 NI Number: NA123456B1	# Go to Focus Person Staff Employment Details and check contract details contain Pay R

The **Validation Errors Summary** panel header displays the number of errors and queries found during the Create and Validate process. The **Validation Fileset ID**, which indicates the version of the DfE fileset currently in use, is also shown (for information purposes only).

Details about the errors and queries that have been found are displayed in the following columns.

Column	Description
Type	Displays the type of validation rule. Failure (F displayed in red) indicates an error, which must be corrected. Query (Q displayed in black) indicates that there are unusual data conditions. These should be checked and corrected, if necessary.
Error Number	Displays the error or query number.
Error Message	Displays the text of the error or query message.
Individual Data Item	Displays the specific record containing the error.
Solution	Provides a suggestion on how the error can be corrected or the query checked. Many solutions have a hyperlink (indicated by a #) to the applicable areas of SIMS.

TIP: Using the Solution hyperlink

When the pointer is hovered over an error or query row, it changes to a hand if a hyperlink is available to the area of SIMS where the problem can be checked.

A hyperlink is also indicated by a hash symbol (#) preceding the Solution text.

Click the required hyperlink to display the specific area in SIMS where the record(s) can be checked/corrected.

To assist in the viewing of any errors and queries:

- Use the **Validation Search** to display the required error or query you want to view. This is achieved by selecting **ALL, ERRORS, QUERIES** or the required number from the drop-down list.
- When **ALL** errors and queries are selected, the errors are displayed at the top of the list by default. Use the scroll bar located at the right-hand side of the panel to view all items.
- When the pointer is hovered over an **Error Message, Individual Data Item** or **Solution** cell, hover help displays the entire content of that cell.
- Change the order of the summary by clicking the appropriate column heading. If required, change the width of the columns by dragging the dividing line between the column headings until the required size is achieved.
- View a summary of errors/queries by clicking the **Report** button, located at the top left-hand side of the **Validation Errors Summary** panel. The summary is displayed in your web browser, from where it can be printed or transferred to a spreadsheet, if required (please see *Transferring Report Data to a Spreadsheet* on page 33).

The errors and queries are displayed until they are resolved and the Create and Validate process is run again.

Resolve as many errors and check as many queries as possible then revalidate the return details. Continue to resolve failures and revalidate the return as many times as necessary.

NOTE: All errors must be resolved and all queries must be investigated unless specific instructions to the contrary are received from your LA.

If at any point you wish to hide the list of error and queries, click the **Close** button located at the top right-hand side of the **Validation Errors Summary** panel. The list is displayed again when the Create and Validate process is run.

In addition to the **Validation Errors Summary**, a Validation Errors and Resolutions document containing a list of all errors and queries that can be generated is being produced. Explanations and information on how to resolve the errors or whether the queries can be ignored are included. The *School Workforce Census Validation Errors and Resolutions* guide can be found on the My Account website (<https://myaccount.capita-cs.co.uk>) by using the search facility to find SWC19.

Producing Detail Reports

Detail Reports can be used to check the data stored in SIMS, which is used to generate the School Workforce Census Return. The reports can be produced as soon as the return has been validated.

Each detail report header displays the **Security Message** that was defined in the **School Workforce Census Browser**, the **Report Criteria** and the **Total number of staff** in the report.

IMPORTANT NOTE: It is recommended that, after viewing statutory returns reports, you delete any temporary web browser files to ensure that any cached data (i.e. data stored on your machine, which enables high-speed access to previously viewed data) is removed.

Also shown at the top of the report is the **School Name**, the **Fileset Number**, the **Filename**, the **Report Created** date and the **XML Version**.

The following reports are currently available.

Workforce Member Basic Details Report

Report Criteria: Contracted Teachers, Agency Teachers, Contracted Teaching Assistants, Other Contracted Support Staff (excludes Teaching Assistants/Other Support Staff who only have service agreements).

- Snapshot Data – staff in regular service on census day (07/11/2019).
- Historical Data – staff with regular service who have either or both:
 - contracts/service agreements which started/ended between 01/09/2018 and 06/11/2019.
 - absences in the period 01/09/2018 to 31/08/2019
 - sickness absences are only included if working days lost is greater or equal to half a day
 - absences are not collected for other support staff or agency teachers
 - training absences are not collected.

The following information is displayed in the report: surname, forename, middle name(s), National Insurance number, former surname, gender, date of birth, ethnicity and disability.

Workforce Member Area Details Report

Report Criteria: Contracted Teachers, Agency Teachers, Contracted Teaching Assistants, Other Contracted Support Staff (excludes Teaching Assistants/Other Support Staff who only have service agreements).

- Snapshot Data – staff in regular service on census day (07/11/2019).
- Historical Data – staff with regular service who have either or both:
 - contracts/service agreements which started/ended between 01/09/2018 and 06/11/2019.
 - absences in the period 01/09/2018 to 31/08/2019
 - sickness absences are only included if working days lost is greater or equal to half a day
 - absences are not collected for other support staff or agency teachers
 - training absences are not collected.

√ = data is included for this area.

X = data not included.

– = data not available/not applicable.

The following information is displayed in the report:

- Personal data: surname, forename, National Insurance number.
- Snapshot data on census day: SWC post, contracts, pay related, service agreements and qualifications.
- Historical data: SWC post, contracts, service agreements and absence.

Workforce Member Professional Details Report

Report Criteria: Contracted Teachers, Agency Teachers, Contracted Teaching Assistants, Other Contracted Support Staff (excludes Teaching Assistants/Other Support Staff who only have service agreements).

- Snapshot Data – staff in regular service on census day (07/11/2019).
- Historical Data – staff with regular service who have either or both:
 - contracts/service agreements which started/ended between 01/09/2018 and 06/11/2019.
 - absences in the period 01/09/2018 to 31/08/2019
 - sickness absences are only included if working days lost is greater or equal to half a day
 - absences are not collected for other support staff or agency teachers
 - training absences are not collected.

The following information is displayed in the report: surname, forename, National Insurance number, teacher number, qualified teacher (QT) status, qualified teacher learning and skills (QTLS) status, early years teacher (EYT) status, higher level teaching assistant (HLTA) status and qualified teacher status (QTS) route, e.g. overseas trained teacher programme.

Workforce Member Contract/Service Agreement Details Report

Report Criteria: Contracted Teachers, Agency Teachers, Contracted Teaching Assistants, Other Contracted Support Staff (excludes Teaching Assistants/Other Support Staff who only have service agreements).

Snapshot Data – staff in regular service on census day (07/11/2019) with current contracts/service agreements.

Historical Data – staff with regular service and contracts/service agreements which started/ended between 01/09/2018 and 06/11/2019.

The following information is displayed in the report: surname, forename, National Insurance number, contract/service agreement type, start date, end date, post, contract/service agreement latest pay review date, school arrival date, destination, reason for leaving, origin, e.g. Break for family reasons, hours per week, full time equivalent (FTE) hours, weeks per year and role, e.g. Midday Supervisor.

Workforce Member Payment Details Report

Report Criteria: Contracted Teachers, Agency Teachers, Contracted Teaching Assistants, Other Contracted Support Staff (excludes Teaching Assistants/Other Support Staff who only have service agreements).

Snapshot Data – staff in regular service on census day (07/11/2019) with payment details.

The total number of staff, staff with leadership posts and staff with non-leadership posts are displayed at the top of the report.

Information for Leadership and Non-Leadership staff is displayed in two separate tables:

- Member Payment Details for staff with Leadership posts
Surname, forename, gender, National Insurance number, contract/service agreement type, post, role, scale/range, minimum, maximum, framework, base pay (excluding allowances), safeguarded salary, additional payment type, additional payment amount and daily rate.
- Member Payment Details for staff with Non-Leadership posts
Surname, forename, gender, National Insurance number, contract/service agreement type, post, role, scale/range, base pay (excluding allowances), safeguarded salary, additional payment type, additional payment amount and daily rate.

Workforce Member Pay Details Comparison Report

*NOTE: This report is available only if the **Allow editing of Base Pay** option is selected (via **Tools | Statutory Returns Tools | School Workforce Census Settings**).*

Report Criteria: Contracted Teachers, Agency Teachers, Contracted Teaching Assistants, Other Contracted Support Staff (excludes Teaching Assistants/Other Support Staff who only have service agreements).

Snapshot Data – staff in regular service on census day (07/11/2019) with payment details that have been edited.

The report compares the base pay recorded in School Workforce Census with that recorded in SIMS Personnel.

The following information is displayed in the report: surname, forename, National Insurance number, contract/service agreement type, post, role, base pay reported in the School Workforce Census and base pay recorded in SIMS Personnel.

Workforce Member Allowance Details Report

Report Criteria: Contracted Teachers, Agency Teachers, Contracted Teaching Assistants, Other Contracted Support Staff (excludes Teaching Assistants/Other Support Staff who only have service agreements).

- Snapshot Data – staff in regular service on census day (07/11/2019) with allowances.
- Permanent and temporary allowances – SWC additional payment amount is derived from $((\text{Annual allowance} \times \text{pay factor}) / 12) \times \text{applicable months}$.
- Spot allowances – the SWC additional payment amount is actual amount.

- Historical spot allowances recorded before the SIMS 2016 Spring release:
 - Actual – if historical spot allowance type is set as Actual, the SWC additional payment amount is the actual amount.
 - Annual – if historical spot allowance type is set as Annual, the SWC additional payment amount is derived from $(\text{Annual allowance} \times \text{pay factor}) / 12 \times \text{applicable months}$.
- For agency teachers not on daily rate, SWC base pay and SWC additional payment amount are derived directly from the service agreement.
- Payment date is assumed to be the 28th of the month.

The following information is displayed in the report: surname, forename, National Insurance number, contract/service agreement type, e.g. permanent, post, role, additional payment type, start date, end date, SWC additional payment amount, allowance annual amount, allowance pay factor and applicable months.

Workforce Member Curriculum Details Report

Applicable to Secondary and All-Through schools only

Report Criteria: Contracted Teachers, Agency Teachers, Contracted Teaching Assistants (excludes Teaching Assistants who only have service agreements and Other Support Staff).

Snapshot Data – staff in regular service on census day (07/11/2019) with curriculum information.

The following information is displayed in the report: surname, forename, National Insurance number, subject, hours taught and year group taught.

Workforce Member Qualification Details Report

Report Criteria: Contracted Teachers, Agency Teachers, Contracted Teaching Assistants, Other Contracted Support Staff (excludes Teaching Assistants/Other Support Staff who only have service agreements).

Snapshot Data – staff in regular service on census day (07/11/2019) with qualification information.

The following information is displayed in the report: surname, forename, National Insurance number, qualification, class of degree, first subject and second subject.

Workforce Member Absence Details Report

Report Criteria: Contracted Teachers, Contracted Teaching Assistants (excludes Teaching Assistants who only have service agreements and Agency Teachers and Other Support Staff).

Historical Data – staff with regular service and absence in the period 01/09/2018 to 31/08/2019.

- Sickness absences are only included if working days lost is greater or equal to half a day.
- Absences are not collected for other support staff or agency teachers.
- Training absences are not collected.

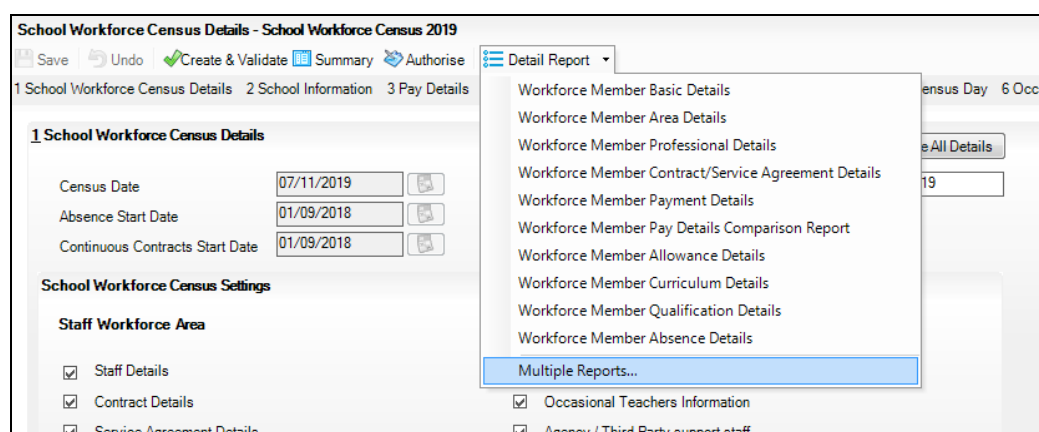
The following information is displayed in the report: surname, forename, National Insurance number, first day of absence, last day of absence, working days lost and absence category, e.g. maternity/paternity leave.

Generating Detail Reports

To run a single detail report, select the required report from the **Detail Report** drop-down list located at the top of the **School Workforce Census Details** page.

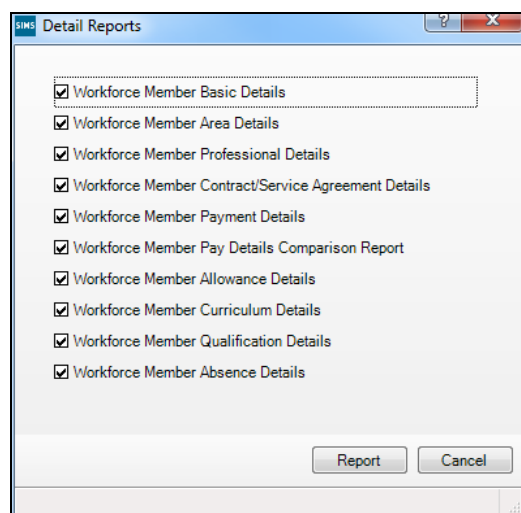
NOTE: The Workforce Member Curriculum Details report is applicable to Secondary and All-Through schools only.

Example of the **Detail Report** drop-down list:



The selected report is generated automatically and displayed in your web browser.

To run several detail reports, select **Multiple Reports** from the bottom of the **Detail Report** drop-down list to display the **Detail Reports** dialog.



By default, all detail reports are selected. If any reports are not required, deselect the associated check box. Click the **Report** button to generate the selected reports.

04| Completing the School Workforce Census

The reports are displayed in your web browser, from where the data can be printed or transferred to a spreadsheet, such as Microsoft® Excel, if required.

The reports are saved automatically in the folder specified in the **School Workforce Census** browser. For guidance on navigating to files on your local workstation when you are working in a Hosted environment, please contact your System Manager or Local Support Unit.

Each report is saved with a filename that is made up of the following data fields separated by underscores ('_'):

<LACode><SchoolNumber>_<SurveyType>_<LACode><LL><Year>_<SerialNumber>_<name of the report>_detail_report.html

For example: 8232999_SWF_823LL19_001_Basic_Details.html.

Example of a Workforce Member Basic Details report:

School Workforce Census - 2019 (Workforce Member Staff Basic Details)									
Security Message : This report contains sensitive information.									
Report Criteria: Contracted Teachers, Agency Teachers, Contracted Teaching Assistants, Other Contracted Support Staff (excludes Teaching Assistants/Other Support Staff who only have service agreements)									
<ul style="list-style-type: none">• SNAPSHOT DATA - staff in regular service on census day 07/11/2019• HISTORICAL DATA - staff with regular service who have either or both:<ul style="list-style-type: none">• contracts/service agreements which started/ended between 01/09/2018 and 06/11/2019• absences in the period 01/09/2018 - 31/08/2019<ul style="list-style-type: none">▪ sickness absences are only included if working days lost is greater or equal to half a day▪ absences are not collected for other support staff or agency teachers▪ training absences are not collected									
Total number of staff = 38									
School Name:		WATERS EDGE PRIMARY SCHOOL			Fileset Number:		1300 (SIMS net)		
Filename:		8232999_SWF_823LL19_001.UNA			Report Created:		16/05/2019 14:13:49		
XML Version:		2018.1.0 Released 2018-06-13							
Surname	Forename	Middle Name(s)	NI Number	Former Surname	Gender	DOB	Ethnicity	Disability	
Abbas	Alisa	-	WE898416A	-	F	08-03-1975	Asian or Asian British, Bangladeshi	Information not yet obtained	
Avery	Helen	-	MW237516C	-	F	03-08-1962	Black or Black British, Caribbean	Information not yet obtained	
Bates	Belinda	Elisabeth	NB124455C	-	F	22-09-1983	White, Irish	Information not yet obtained	
Boswell	Jennifer	Arlene	NB945544D	-	F	18-06-1972	UNK	Information not yet obtained	
Brooks	Carl	Thomas	MW662626B	-	M	04-06-1951	White, British	Information not yet obtained	
Brown	Charmaine	Tanita	NW254733B	-	F	14-02-1969	Black or Black British, Caribbean	Information not yet obtained	
Brown	Pauline	-	NW254733D	-	F	30-05-1958	White, British	Information not yet obtained	

Printing a Report from your Web Browser

IMPORTANT NOTE: Any printed reports containing information that could identify a person (e.g. their name, address, National Insurance number, etc.) should be used for validation purposes only and should not be retained. The Security Message (displayed at the top of each report) can be customised to include, for example, instructions for the destruction of the printed reports.

1. With the generated report displayed in your web browser, select the **Print** option (**Ctrl+P**) to display the **Print** dialog.
2. Ensure that the print settings are correct then click the **Print** button.
3. Click the **Close** button on the top right-hand corner of the web page to close the report and return to the census page.

Transferring Report Data to a Spreadsheet

Transferring a report to a spreadsheet application enables the data to be sorted, the column order to be changed, etc.

With the generated report displayed in your web browser, right-click the report and then select the required option, e.g. **Export to Microsoft Excel**, from the drop-down list.

IMPORTANT NOTE: *The spreadsheet contains the same level of sensitive information as the original HTML report from which the information was transferred. Therefore, the spreadsheet file must be saved to a folder with the same level of security.*

Deleting Temporary Web Browser Files

It is recommended that, after viewing statutory returns reports, you delete any temporary web browser files to ensure that any cached data (i.e. data stored on your machine, which enables high-speed access to previously viewed data) is removed.

This prevents the information, e.g. copies of web pages that are stored in the local cache for faster viewing, remaining on the hard disk of the PC in the temporary directory, where they are not secure because they can still be accessed.

When this process is performed, all temporary files (including any Statutory Returns reports files) that the browser has cached are deleted.

To clear the cache, open your web browser, then clear the browsing data history via Settings. For more information, please refer to the documentation applicable to the web browser you are using.

Producing the Summary Report

The Summary report enables the school staff, who are involved in the return's preparation, to assess the accuracy and completeness of the return data. It should then be passed to the Head Teacher for their review.

NOTE: When the return is authorised, the Summary report is automatically generated and displayed in your web browser.

Generating the Summary Report

The Summary report enables the accuracy and completeness of the return to be assessed by the school staff involved in preparing the return, including the Head Teacher, who is required to check the data before authorising the return.

The Summary report can be run at any time after the return is created and validated.

To run the report, click the **Summary** button located at the top of the **School Workforce Census Details** page. The report is displayed automatically in your web browser, from where the data can be printed or transferred to a spreadsheet, such as Microsoft® Excel, if required.

The report is saved automatically in the folder specified in the **School Workforce Census Browser**, e.g. S:\School Workforce Census. For guidance on navigating to files on your local workstation when you are working in a **Hosted** environment, please contact your System Manager or Local Support Unit.

The report is saved with a filename that is made up of the following data fields separated by underscores ('_'):

```
<LACode><SchoolNumber>_<SurveyType>_<LACode><LL><Year>_<SerialNumber>_<name of the report>_Summary_Report.html
```

For example: 8232999_SWF_823LL19_001_Summary_Report.html.

Editing an Unauthorised Return

The return details, e.g. **Description**, **School Information**, etc. can be edited via the **Census Return Details** page at any time prior to authorisation.

IMPORTANT NOTE: An authorised return cannot be edited. If changes are required to an authorised return, use the **Copy** facility to produce a duplicate return (with a unique description) in which the changes can be made.

1. Select **Routines | Statutory Returns | School Workforce Census** to display the browser.
2. Ensure that the **Census Folder** and the **Security message for Reports** are correct, then click the **Search** button to display any previously created returns. Unauthorised return files can be recognised by their .UNA suffix.
3. Double-click the required return. Alternatively, highlight the required return, then click the **Open** button to display the **Census Return Details** page.
4. Edit the return details as required.
5. Click the **Create & Validate** button to display the **Validation Errors Summary** panel.
6. Run the detail reports and Summary report and then use the information they provide to assist with resolving errors and queries.
7. Repeat the editing and Create & Validate process again, if necessary.
8. Click the **Save** button.



More Information:

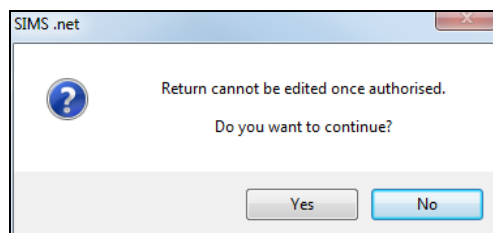
Configuring the Census Folder on page 10
Specifying the Security Message for Reports on page 11
Producing the Summary Report on page 33

Authorising the School Workforce Census

A School Workforce Census must be authorised before it can be uploaded to the DfE COLLECT data collection website or sent to your LA, depending on the instructions you have been given. Before authorising the return, you should ensure that all the information displayed on the **School Workforce Census Details** page is correct and does not require further editing. This is best achieved by reviewing the Summary and detail reports.

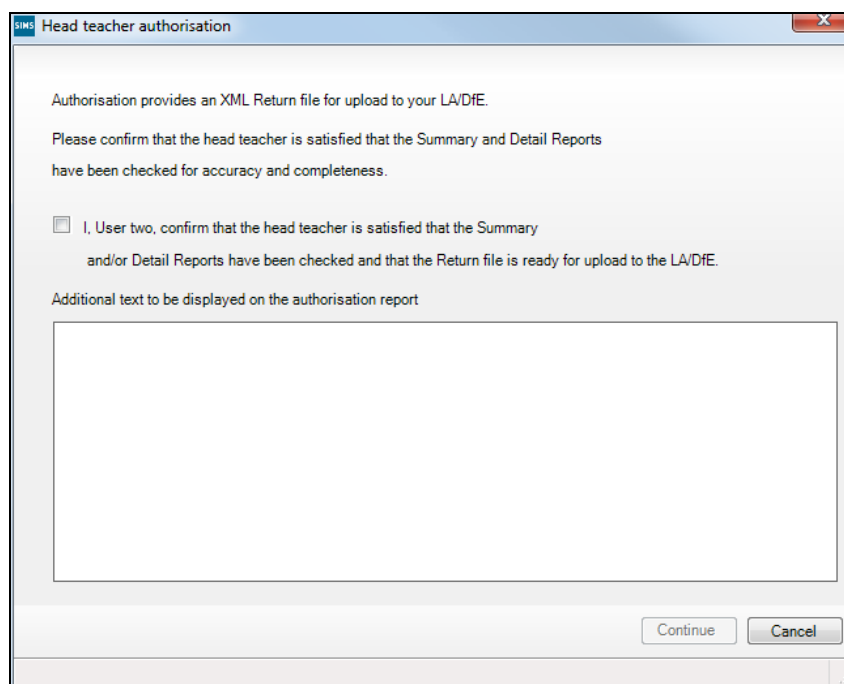
1. Click the **Authorise** button (located at the top of the **Schools Workforce Census Details** page).

A message advising you that the return cannot be edited once it is authorised is displayed.



2. Click the **Yes** button to continue or the **No** button to return to SIMS where edits can be made.

If you choose to continue, the **Head teacher authorisation** dialog is displayed.



3. Enter any additional text to be displayed on the authorisation report. This may be requested by your LA, e.g. to explain the reason for any validation failures.
4. Select the confirmation check box to confirm that the Head Teacher is satisfied that the Summary and detail reports have been checked and that the return file is ready to upload to the DfE COLLECT website/send to your LA.

When the confirmation check box is selected, the **Continue** button is activated, enabling the authorisation process to be completed.

5. Click the **Continue** button to authorise the return.
 - The Summary report, Authorisation report and Validation Errors Summary report are generated automatically and displayed in your web browser, from where they can be printed, if required.
 - The return file extension changes automatically from UNA (unauthorised) to XML (authorised).
 - All details, i.e. the reports and the XML file, are saved in the **Census Folder**, which was specified previously in the **Census Return for <season> <year> Term** browser.

These details can be viewed via **Tools | Statutory Tools | Retrieve Authorised Census Return Files**.

For guidance on navigating to files on your local workstation when you are working in a Hosted environment, please contact your System Manager or Local Support Unit.

When a return has been authorised, it is no longer possible to edit the details displayed on the **School Workforce Census Details** page. If you authorise a return and subsequently need to make amendments, you must make a copy of the return then edit the copy, or create a new return.

Submitting the Return

When the return has been completed and the Summary report has been signed by the Head Teacher (if requested to do so by your LA), the .XML file can be uploaded to the DfE COLLECT data collection website or sent to your LA, depending on the instructions you have been given.

Guidance about how Local Authorities, schools and academies should submit school census data is available on the GOV.UK website (<https://www.gov.uk/guidance/school-census>).

The authorised return file is located in the folder previously specified in the return browser. For guidance on navigating to files on your local workstation when you are working in a Hosted environment, please contact your System Manager or Local Support Unit.

IMPORTANT NOTE: *An authorised file cannot be edited. If you need to make changes to an authorised file, you must make a copy of the original file, rename it and work on the copy.*



More Information:

Configuring the Census Folder on page 10

Copying a Return on page 38

Retrieving Authorised Census Return Files

Authorised returns are stored in your Document Management Server (DMS). The Returns Manager can download and run the reports associated with previous authorised returns enabling the data for the current return to be compared with that submitted previously.

1. Select **Tools | Statutory Returns Tools | Retrieve Authorised Census Return Files** to display the **Retrieve Authorised Census Return Files for <census name>** page.
2. Select the type of census required from the **Return Type** drop-down list to display a list of previous returns that match the selected criteria.
3. By default, the files **Download to** the folder specified in the census browser. To specify a different folder:
 - a. Click the **Select a Folder** button (...) to display the **Browse For Folder** dialog. Navigate to the location of the required folder then highlight it. If a suitable folder does not exist, click the **Make New Folder** button then enter a suitable folder name.

IMPORTANT NOTE: *Ensure that authorised personnel only have access to the download folder because the retrieved files contain sensitive information.*

For guidance on navigating to files on your local workstation when you are working in a Hosted environment, please contact your System Manager or Local Support Unit.

- b. Click the **OK** button to select or create the folder then return to the **Retrieve Authorised Return Files for <census name>** page where the chosen folder name is displayed in the **Download to** field.
4. Highlight the return you wish to retrieve then click the **Retrieve Files** button.

The authorised return file (i.e. the XML file) and all reports associated with the selected return are downloaded from your DMS to the specified folder. The folder and its contents are then displayed automatically, enabling you to open the required files in your web browser.

5. The contents of the specified folder can be viewed again by clicking the **Folder** button adjacent to the **Download to** field.

If you want to create reports based on cohorts, so that items collected in the return can be tracked, a sub-report is available (via **Reports | Design Reports**).

The **Statutory Returns** sub-report is available for selection only if **Student** has been selected as the Data Area.

When you **Select fields to be included in the report**, the **Statutory Returns** sub-report is located at the bottom of the list (the last node). Three options are available for selection under this sub-report: **Authorised Date**, **File Name** and **Return Description**.



Additional Resources:

Designing and Running Reports handbook

Copying a Return

An unauthorised return can be copied and saved as a new return. This enables a 'snapshot' of a return to be taken at any time providing a backup of any manual changes that have been made to the return, for example before recalculating details.

This functionality can also be used to make a copy of an authorised return if the LA or Welsh Government requires it to be resubmitted. The necessary corrections can then be made to the data. The copied return must be saved, created, validated and authorised before resubmitting.

NOTE: Ensure that the return you wish to replicate is not open at the time of copying.

1. Select **Routines | Statutory Returns | School Workforce Census** to display the census browser.
2. Click the **Search** button to ensure that the list of returns is displayed.
3. Highlight the file you want to copy and then click the **Copy** button.

A message requests confirmation that you wish to make a copy of the selected return.

***IMPORTANT NOTE:** Any values for attendance (where applicable), Early Years, Post Looked After Arrangements and Top-up Funding will not be copied but will be populated from the current values held in the database. The Create & Validate routine must be run to generate a new census file.*

4. Click the **Yes** button to make the copy, which is then displayed in the browser as:
Copy of <description of selected file>.
5. To rename the copied return, highlight it, then click the **Open** button to display the **School Workforce Census Details** page.
6. In the **School Workforce Census Details** panel, edit the **Description** and then click the **Save** button.

***IMPORTANT NOTE:** A unique description must be used for each return. If duplicate returns are detected, an error message is displayed.*

Deleting an Unauthorised Return

During the return process, a number of copies of the return may be created, e.g. to track progress. When the return has been authorised successfully, it is advisable to delete any versions of the return that are no longer required. This keeps the number of files in the storage folder and listed in the browser to a minimum, therefore removing confusion and lessening the risk of selecting the wrong return.

The Delete routine can be used to remove unwanted returns at any time prior to the relevant return being authorised.

IMPORTANT NOTES: Any return files that have already been authorised cannot be deleted.

When a return file is deleted, any associated files, e.g. Validation Errors Summary, detail reports, etc. that have been produced are also deleted.

1. Select **Routines | Statutory Returns | School Workforce Census** to display the browser.
2. Click the **Search** button to ensure that the list of return files is displayed.
3. Highlight the return file to be deleted, then click the **Delete** button. A message prompts for confirmation that the selected return should be deleted.
4. Click the **Yes** button to permanently delete the selected return file and all associated report files.

The selected return file and associated reports are removed from the browser and the storage folder.

Index

A

absence details report	30
agency/third party support staff	21
allowance details report.....	29
applying	
licence.....	7
area details report	27
authorising the census	34

B

base pay	16
basic details report	27

C

calculating details.....	13
census	
authorising	34
configuring	10
copying	38
deleting.....	38
checking	
curriculum details	18
school details	14
COLLECT data collection	
submitting census.....	36
configuring	
census defaults	10
census folder.....	10
continuous contracts dates	11
contract/service agreement details	
report.....	28
copying a census.....	38
creating	
school workforce census	9
curriculum details	
checking.....	18
reporting	30
curriculum details report	30

D

defaults	
configuring.....	10
deleting	
a return.....	38
temporary web browser files	33
detail reports	
printing	32
producing	26, 31
details	
calculating	13
dry runs	8

E

editing	
curriculum details	18
school information	14
school workforce census defaults	10
school workforce census details.....	11
unauthorised return	34
errors and queries	23
exporting	
school workforce census file.....	36

F

folder	
specifying the school workforce	
census.....	10

G

generating	
detail reports	31
summary report	33

H

historical spot allowance.....	23, 29
--------------------------------	--------

L

leadership pay details	16, 17
licence	
applying	7

N

non-leadership pay details..... 16, 17

O

occasional teachers information..... 20

P

pay details

 leadership..... 16

 non-leadership 16

pay details comparison report 29

payment details report 28

permissions

 defining 7

previous authorised census returns..... 37

 viewing 37

printing reports 32

 transferring reports to a
 spreadsheet 33

professional details report 28

Q

qualification details report 30

queries

 resolving 25

R

reporting

 copying 33

 detail reports 26, 31

 printing 32

 summary report 33

 transferring to a spreadsheet 33

 validation errors summary report..... 25

resolving

 errors..... 25

 queries..... 25

S

school details

 editing..... 14

school workforce census

 configuring..... 11

 creating..... 9

 details 11

 exporting..... 36

 transferring file..... 36

security message..... 11

SIMS version required 8

spreadsheet

 copying detail report to 33

submitting

 authorised return..... 36

summary report 33

T

third party/agency support staff 21

V

vacancies 19

validating

 create & validate process..... 23

 resolving failures 25

viewing

 previous authorised census returns 37