

((SENSONEO))

Single sensor

Installation guide 2018

www.sensoneo.com/knowledge

OVERVIEW

The Sensoneo Single Sensor LoRa / Sigfox is an enterprise-class sensor. Designed for various types of containers from high capacity to small containers, it meets the needs of the customers wanting the secure data transfer to cloud-based applications.

Package Contents

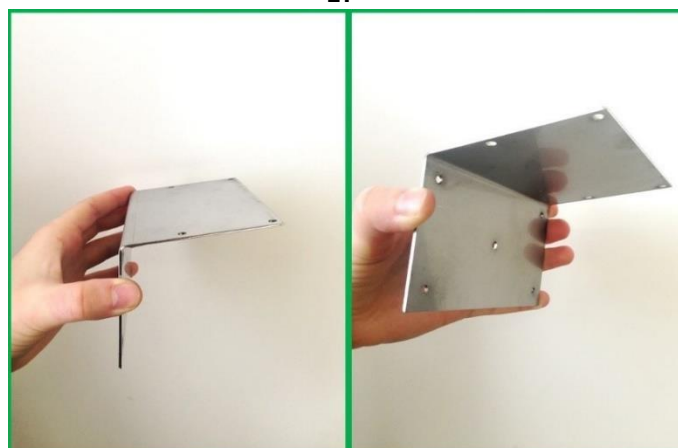
The package contains the following:

- Single Sensor LoRa / Sigfox



- Mounting kit

1.



- Magnet

Note 1: Magnet may not be part of the package if the air-post has been used for delivery. There are respective air-post restrictions.

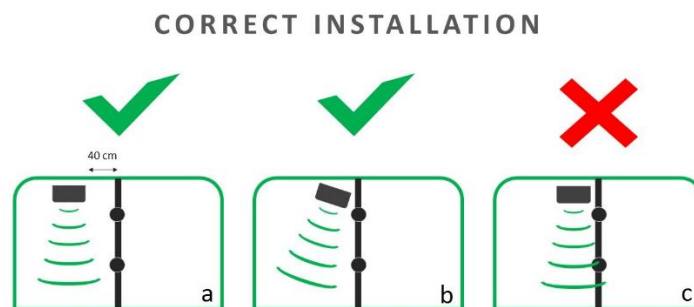
Note 2: Battery may not be part of the package if the air-post has been used for delivery. There are respective air-post restrictions.

Installation Instructions

Choose Your Mounting Location

A good mounting location is important to getting the best performance out of your sensor. Keep the following in mind:

1. The device should be pointing down to the center of the bottom of the container, bear in mind that the measurement is starting 15 cm below the sensor. When installing on the lid then the sensor should be at least 40 cm from the side wall of the container (position A). When installing on the side wall then the sensor has to point away from the wall as shown in the picture (position B). Picture (position C) shows incorrect installation.

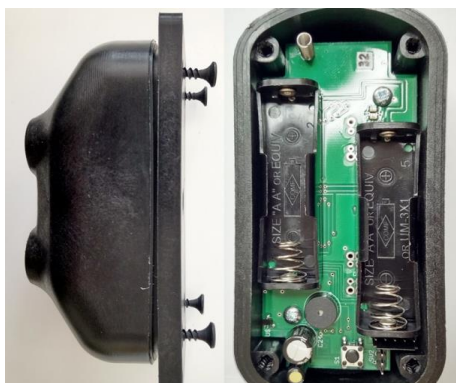


1. Make sure that you are in the range of network signal (LoRa or Sigfox) and your sensors ID is registered in the network. The ID can be found on the label.

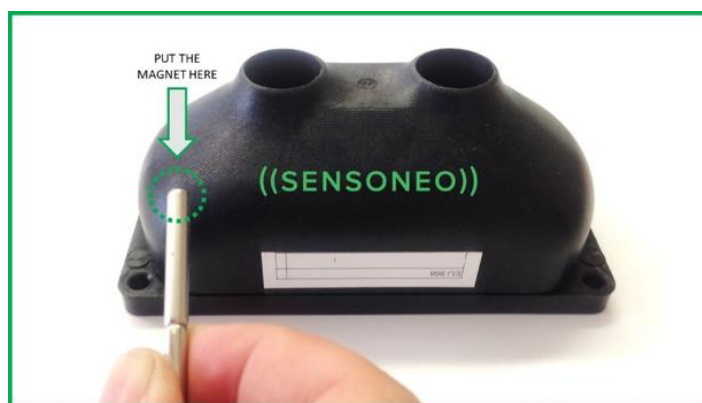
2. Batteries you are using are recommended by vendor: Battery AA lithium 3.6V (e.g. SAFT LS 14500)

Sensor initialization

1. If missing, place the batteries into the sensor by loosening the screws as shown.



2. Attach the magnet to the sensor as shown in the picture (turn On/ Off), you will hear the short beep 4 times.



3. After initialization sensor starts to measure and logs into the network. Within 1 minute you should hear short beep 1 time. If the transmission is not complete you can hear short beep 2 times. In that case, you have to check whether the measurement was transferred to Sensoneo Waste Management System. Make sure you are in the coverage area of the network signal (LoRa or Sigfox).

Note: If needed then attaching the magnet again on the same place will switch off the sensor with the 1-time long beep tone confirmation.

Physical installation into the container

1. Fix the sensor on the mounting kit with rivets. Recommending the use of silicon on top for protection from water.



2. Fix the mounting kit with the sensor in the container as shown in picture 2 (don't forget to follow the instructions mentioned in pictures 1a/1b).



Device Functionality and Test Network Coverage verification

1. Log in to Sensoneo Smart Waste Management tool for registration and configuration(<http://prodadmin.sensoneo.com/>)

Follow the instructions in the configuration guide.

2. Install the mobile application Sensoneo and check the connectivity