



Loris X2 Firmware Flash Guide

Product Name	Loris X2
Rev #	1.1
Release date	14-Jan-2019
Reference documents	
Release summary	This Guide provides necessary steps to update the firmware of Loris X2

Revision History

Date	Version	Release summary
12-Apr-2018	1.0	This Guide provides necessary steps to update the firmware of Loris X2
14-Jan-2019	1.1	Firmware download link

Contents




1. Disclaimer.....	2
2. Required Items.....	3
3. Required Software	3
4. Loris X2 Configuration.....	4
4.1. Enabling WIFI	4
5. Loris X2 Firmware Upgrade.....	6

1. Disclaimer

This document contains proprietary information and is not intended for public distribution. All information within this document is the property of Averos, unless otherwise stated. All rights reserved. No part of this document may be reproduced or transmitted in any form by any means, electronic, mechanical, photocopying, recording, or otherwise, without prior written permission of Averos

2. Required Items

Following Items are required:

Items	Model #	Picture	QTY
Ethernet Patch Cable	Any		1
Wall Mount	Provided with Loris Lite G2		1
Loris X2			1

3. Required Software

Please download:

Software Name	Version	Download link
Google Chrome	Any	
Firmware Image	Latest	http://files.averos.com/firmware/loris/x2/

4. Loris X2 Configuration

4.1. Enabling WIFI

1. Press and hold the button with pin for 6 seconds as shown in Figure 1. After this LED will blink in the same format as in Figure 2. LED blink indicate WiFi SSID is turned ON.



Figure 1



Figure 2

2. Connect to Loris X2 Wi-Fi. You can find the SSID and Password from the back of Device.



Figure 3

3. After successful connection open Google chrome browser and open the configuration page by opening "192.168.100.1"
4. Login with following credentials
 - User name: root
 - Password: averos

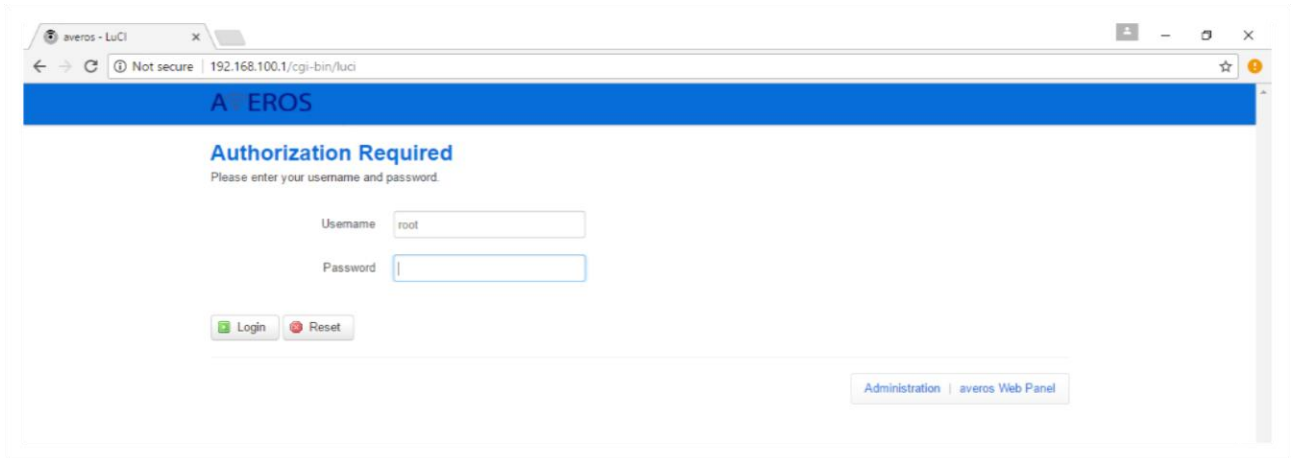


Figure 4

5. Loris X2 Firmware Upgrade

Download the latest firmware from the link below

Link: <http://files.averos.com/firmware/loris/x2/>

1. Click on System Settings and then Click on Backup and Restore

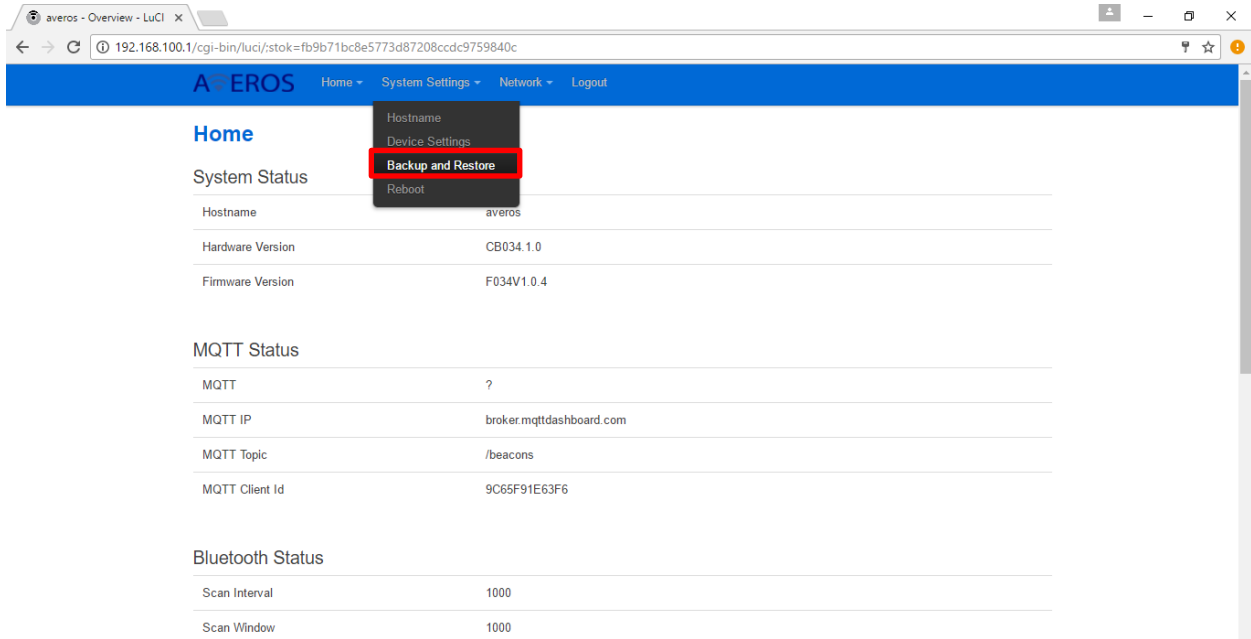


Figure 5 Selecting Backup and Restore Option

2. Uncheck "Keep Settings"
3. Click on "Choose File" button and Select the image file provided
4. Click on Flash Firmware

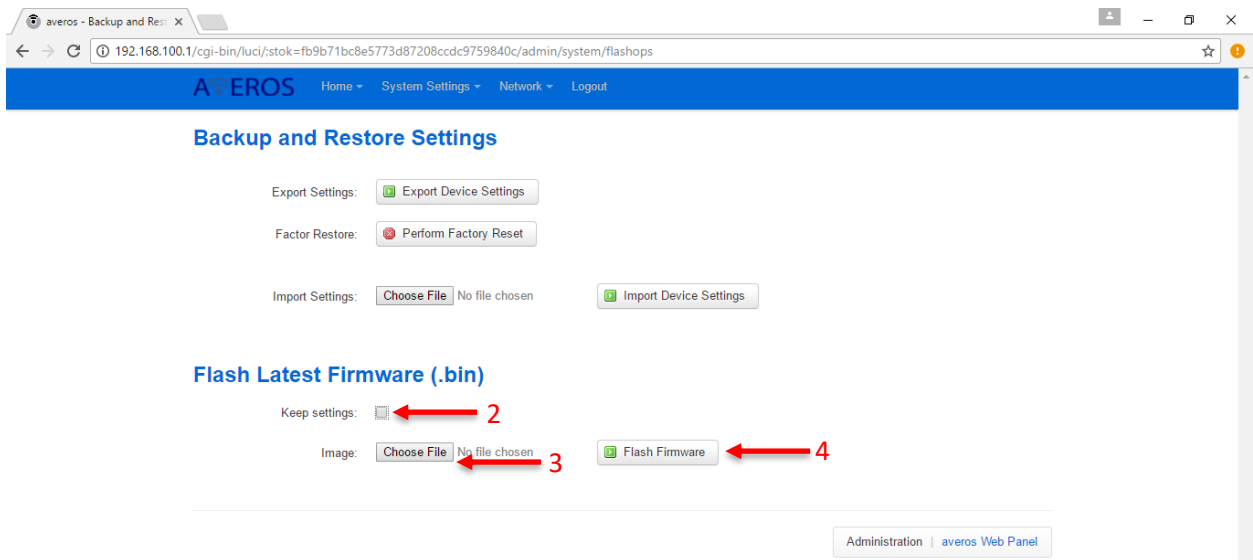


Figure 6 Backup and Restore Settings

5. Wait few minutes until the file gets uploaded and then you will receive a window as shown below

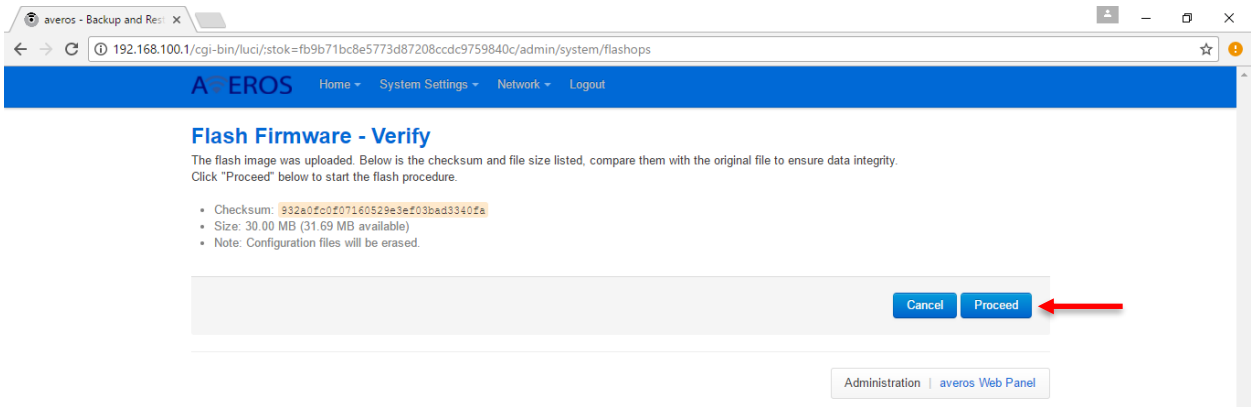


Figure 7 Firmware Uploaded

6. Now click on proceed button. Now u will receive a window as shown below

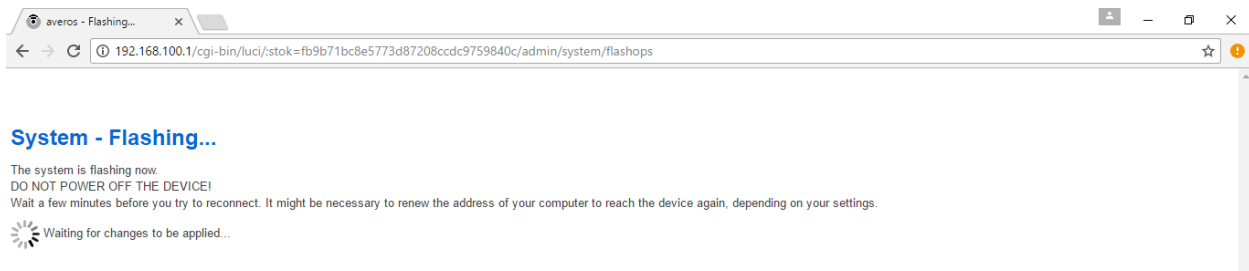


Figure 8 Firmware Flashing

7. Figure 9 shows LED state while downloading the firmware. After downloading firmware, update will start. LED will be OFF while updating.

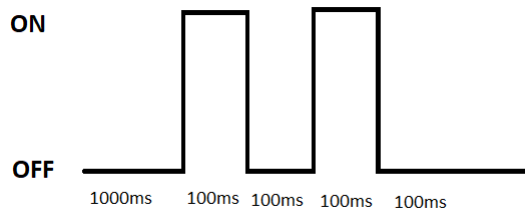


Figure 9

8. Wait until the device status LED starts blinking and then your Loris X2 is ready to use