



FLEET MANAGEMENT QUICK START GUIDE

Product Name	Fleet Management
Product Owner	Rohail Rasool
Audited By	
Ver #	1.1
Release date	25-Dec-2018
Reference documents	
Release summary	

Revision history

Date	Version	Released by	Release summary
25-Dec-2018	1.0	Rohail Rasool	Created Document
30-Dec-2018	1.1	Rohail Rasool	Added LorisV1 Health status

Disclaimer

This document contains proprietary information and is not intended for public distribution. All information within this document is the property of Averos, unless otherwise stated. All rights reserved. No part of this document may be reproduced or transmitted in any form by any means, electronic, mechanical, photocopying, recording, or otherwise, without prior written permission of Averos

Contents

1	Introduction	7
1.1	Features	7
2	System Requirements	8
2.1	Required Items	8
2.2	Required Software	8
3	Getting Started.....	9
3.1	Fleet Management Configuration.....	9
3.1.1	ALS Login	9
3.1.2	Vehicle Settings.....	11
3.2	Power Up Hardware.....	16
3.2.1	Loris V1.....	16
3.3	FMS Testing.....	19

Table of Figures

Figure 1 Login Screen	9
Figure 2 Successful Login	10
Figure 3 Fleet Management.....	11
Figure 4 Settings.....	12
Figure 5 Vehicle Details.....	13
Figure 6 Vehicle Data View	14
Figure 7 Attaching Gateway.....	15
Figure 8 SIM Card Tray Eject	16
Figure 9 SIM Card installation	16
Figure 10 SIM Card tray insertion	16
Figure 11 Loris V1 Wiring	17
Figure 12 Vehicle Location	19

Glossary

ALS	Averos Location Sphere
RTLS	Real Time Location Tracking
FMS	Fleet Management System
BLE	Bluetooth Low Energy

About this guide

The guide is intended to provide general content and guidelines for configuring and setting up Fleet Management System for the first time. Much of the specific content has been shaped by the particular needs of the customers for Fleet Management System that you can implement in your own company — to start building a system for tracking valuable items, people and securing the vehicle.

Who should use it?

This guide is targeted for audience who want to use Fleet Management System in their product/Solutions for tracking value items or people inside vehicle. The FMS will provide you the live location of beacons wherever it is inside the vehicle. The information can further be used to produce alerts upon the requirements

We have included everything from planning to implement FMS but we make no claims about completeness or depth for more advanced features in the FMS, or those in other solutions using FMS. The guidelines presented here are largely based upon the FMS Configuration Manual, and we provide suggestions as to other useful published product guides at AVEROS Support..

1 Introduction

Averos provides advanced and innovative smart city and RTLS (Real Time Location System) technological solutions that are intuitive, efficient, cost effective and of high quality and reliability. Due to its patented application of BLE (Bluetooth Low Energy) technology it can offer a cost-effective solution that integrates directly with modern mobile smart devices and legacy systems, thereby providing better visibility and management of assets, people and vehicles. Furthermore, Averos offers even more cost-effective solutions by merging legacy semimanual tracking solution, such as barcode, QRP codes and NFC with its own unique BLE RTLS technology, thereby making it affordable for even low cost assets.

Averos provides and tools and applications for the company administration for optimal use of their vehicles from a central platform in order to increase their performance, keep operations cost as minimum and automated access control of vehicle

1.1 Features

Live tracking of vehicles

Live Tracking of all vehicles

- Map View
Display live and last seen location of all vehicles on outdoor map

Live tracking of Assets

Live Tracking of all assets

- Map View
Display live and last seen location of all assets inside vehicle on outdoor map

Vehicle Stats



User can get access for complete set of vehicle sensors like

- Speed
- Direction
- Altitude
- Door Status.

2 System Requirements

2.1 Required Items

Following Items are required:

Item	Model Number	Picture	QTY
Loris V1	1001-037		1
CoreBLU-X2-A	1002-023		1

2.2 Required Software

Please download (No need to install):

Item	Model Number	Download Link
Google Chrome	Any	

3 Getting Started

3.1 Fleet Management Configuration

3.1.1 ALS Login

1. Connect to the ALS kit by typing `http://als.averos.com/` in the address field of your browser, and then click Enter. A login window like the one shown below opens:

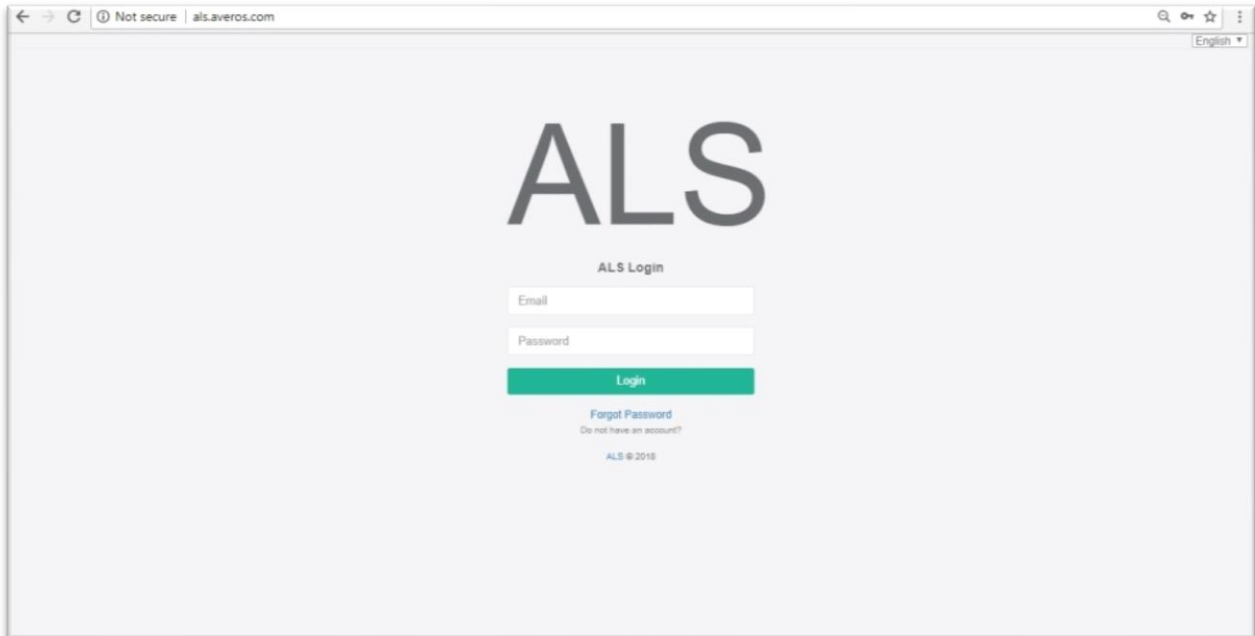


Figure 1 Login Screen

- For security reasons, the ALS kit has its own user name and password. Averos will provide the username and password through an email. After logging in, you will see the following screen:

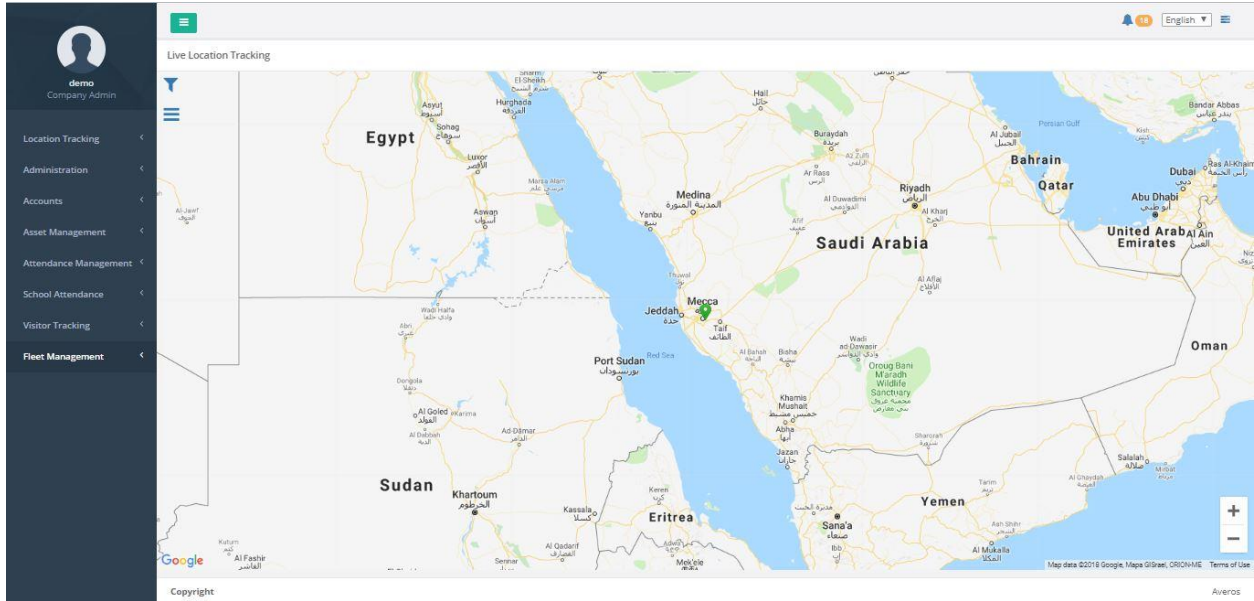


Figure 2 Successful Login

3.1.2 Vehicle Settings

1. Now click on “Fleet Management” present at bottom left of the screen.

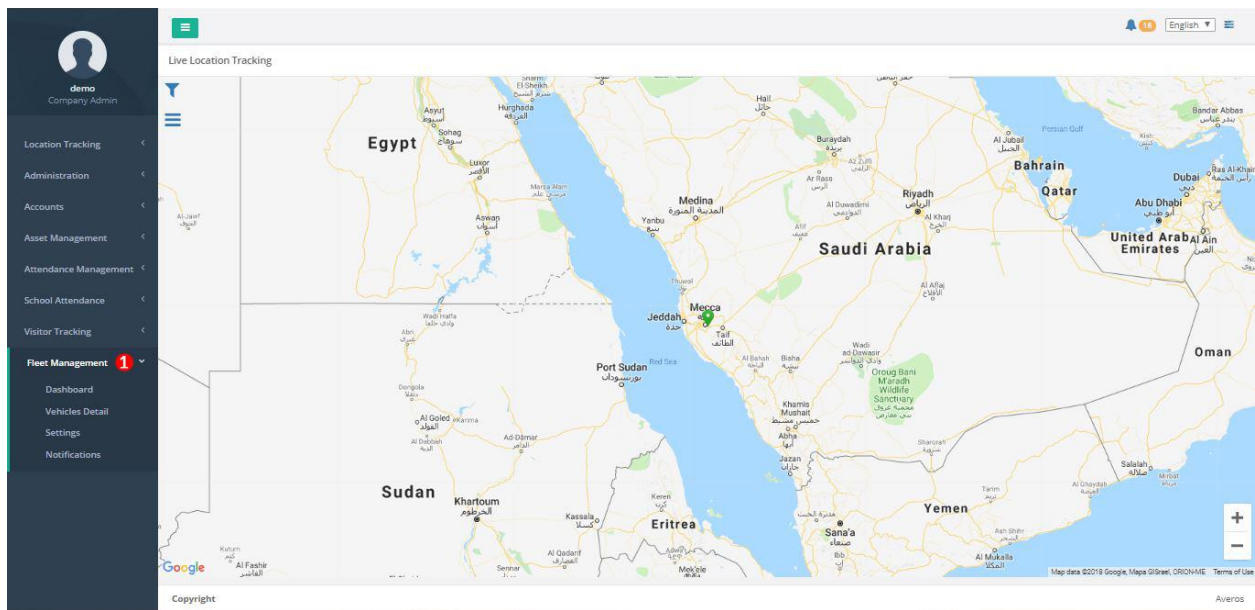


Figure 3 Fleet Management

2. Now click on “Settings”.
3. Then click on “Add New” at the right corner of the screen.

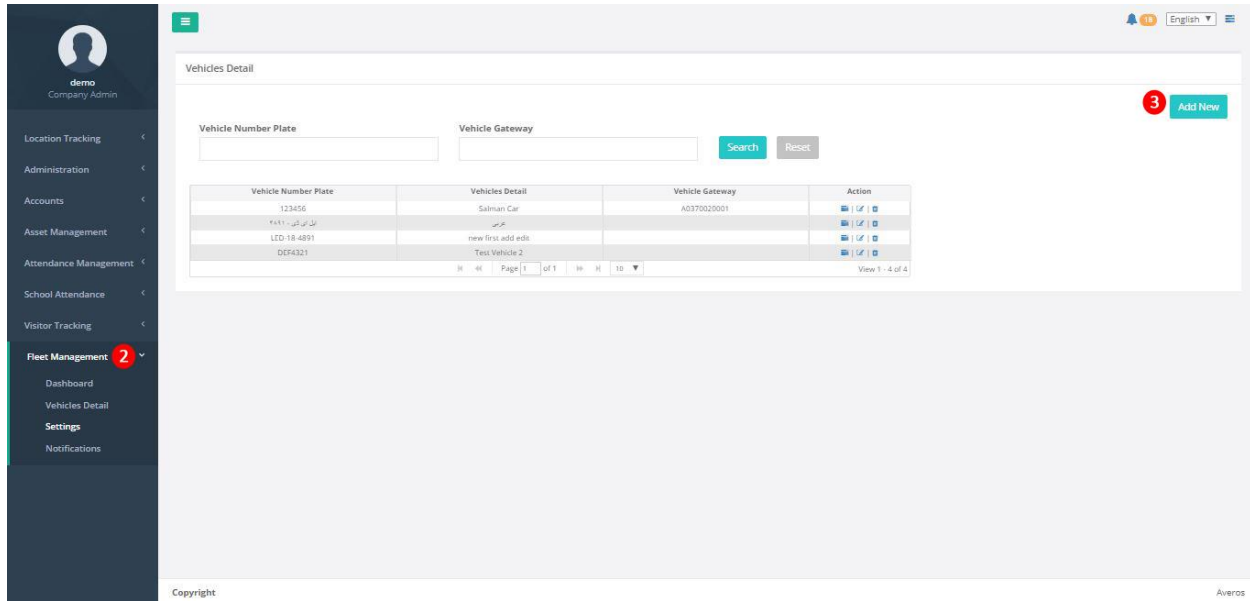


Figure 4 Settings

4. Now give Vehicle Number Plate data.
5. Moreover, Vehicle Data like the make of the car.
6. Click on “Save” button.

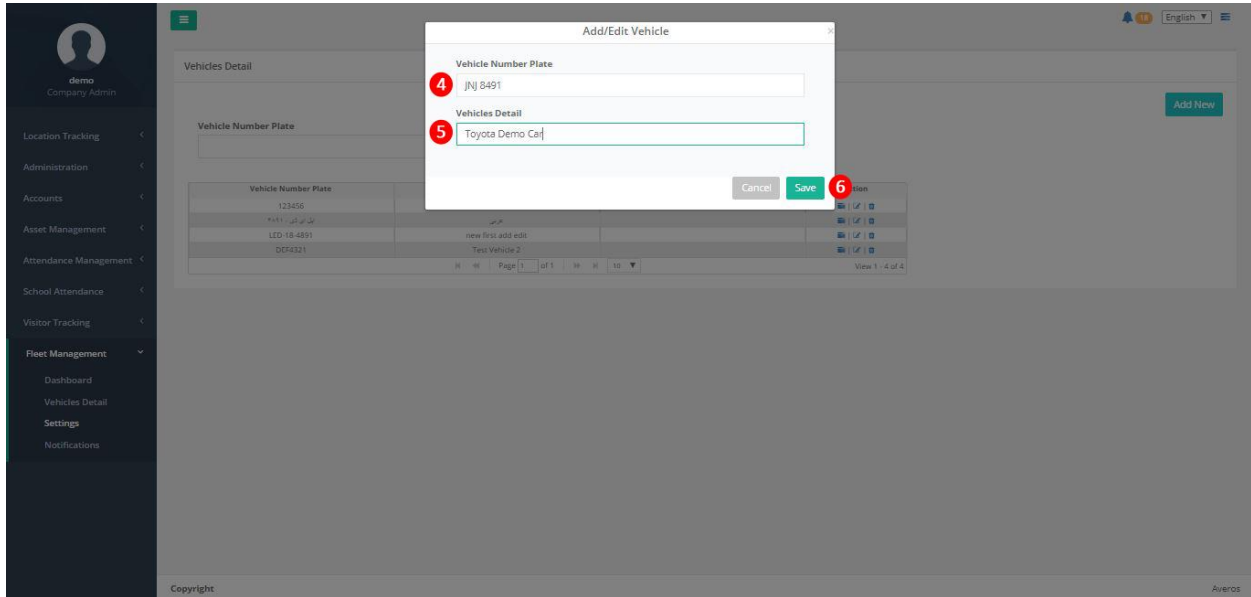


Figure 5 Vehicle Details

7. After adding, the Vehicle details click on “Attach Gateway” button under Action.

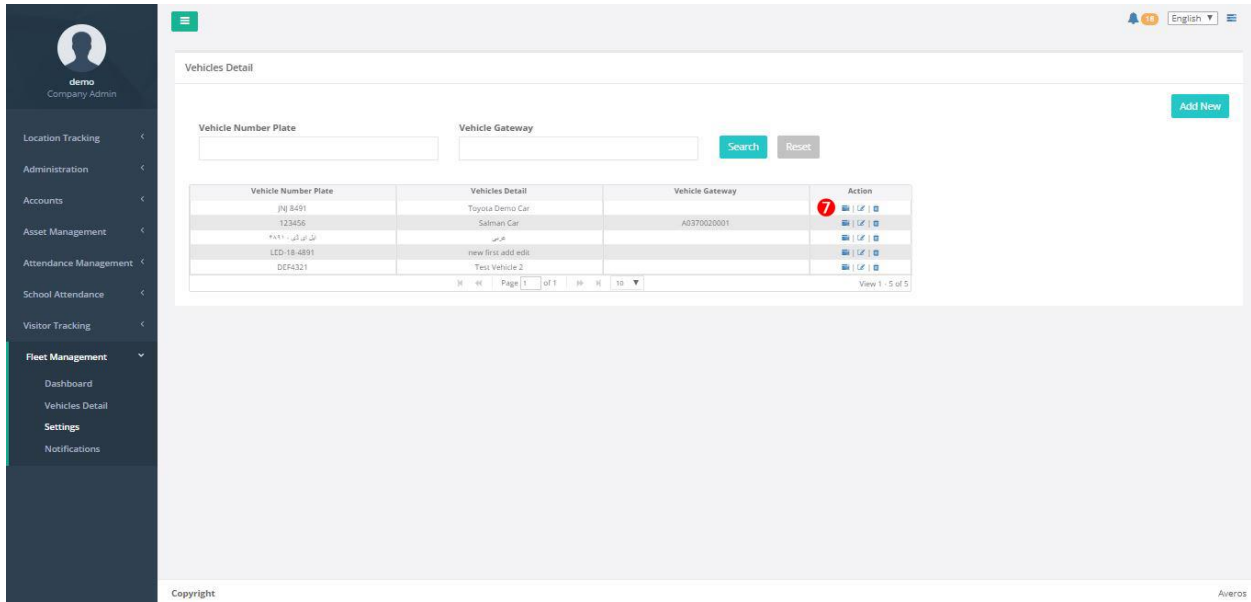


Figure 6 Vehicle Data View

8. Now attach the Gateway of your company under “Gateway Identifier”.
9. Click on “Save” button.

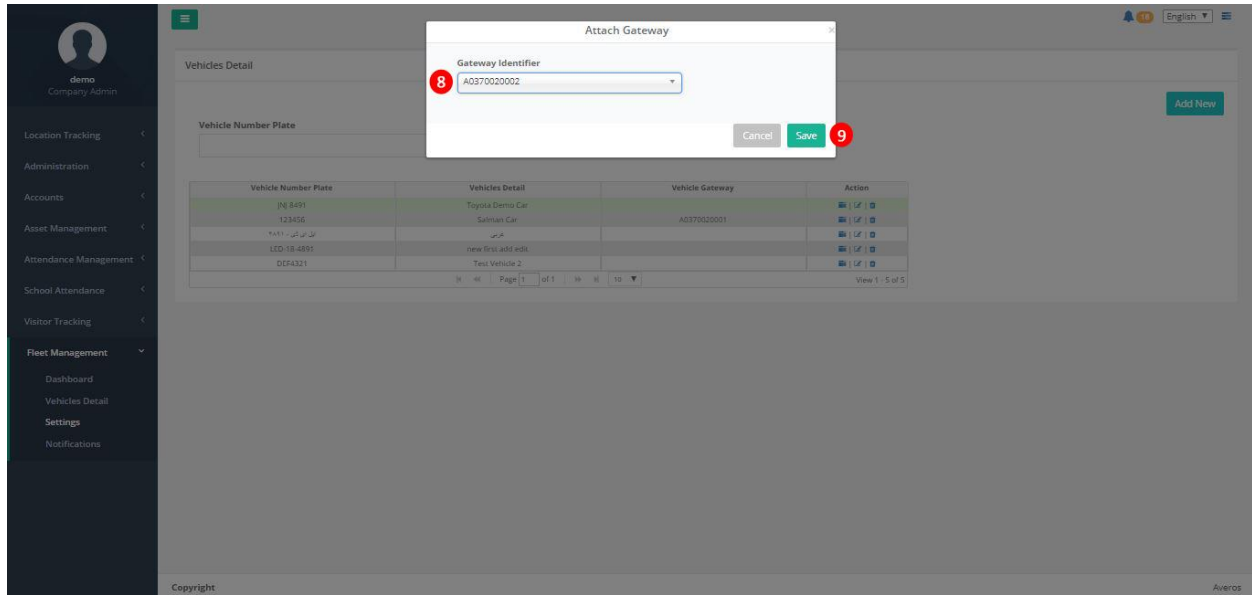


Figure 7 Attaching Gateway

3.2 Power Up Hardware

3.2.1 Loris V1

3.2.1.1 SIM Card Installation

1. Press the Eject pin as marked in the below.

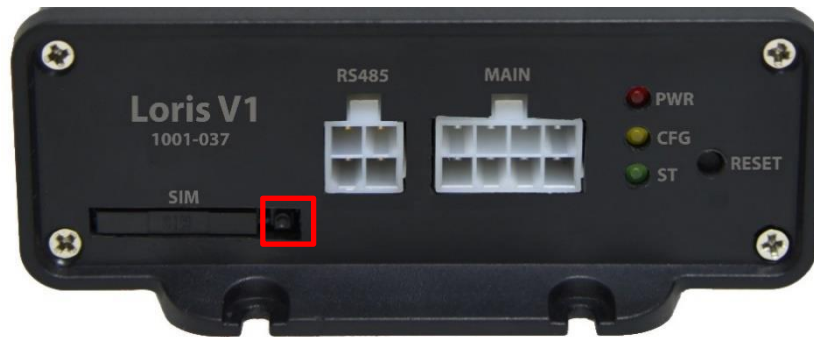


Figure 8 SIM Card Tray Eject

2. SIM Tray will pop out as shown below.



Figure 9 SIM Card installation

3. Insert the SIM in the tray and gently slide the tray back into the slot.



Figure 10 SIM Card tray insertion

3.2.1.2 Wiring

1. Attach Red Wire to car battery +ve terminal
2. Attach Black wire to battery -ve terminal



Color	Pin	Description
Yellow	1	Ignition Control
Blue	2	GP_input
Orange	3	Unlock Door Control/GP Relay
White	4	Door Sensor
Brown	5	Lock Door Control/GP Relay
Green	6	Ignition Sense
Black	7	Ground
Red	8	Power 8 to 30V



Figure 11 Loris V1 Wiring

3.2.1.3 Testing

To check the statuses of your device, follow the steps below:

1. On the homepage, click on Administration,
2. Then click on Gateway,
3. Click on Health.

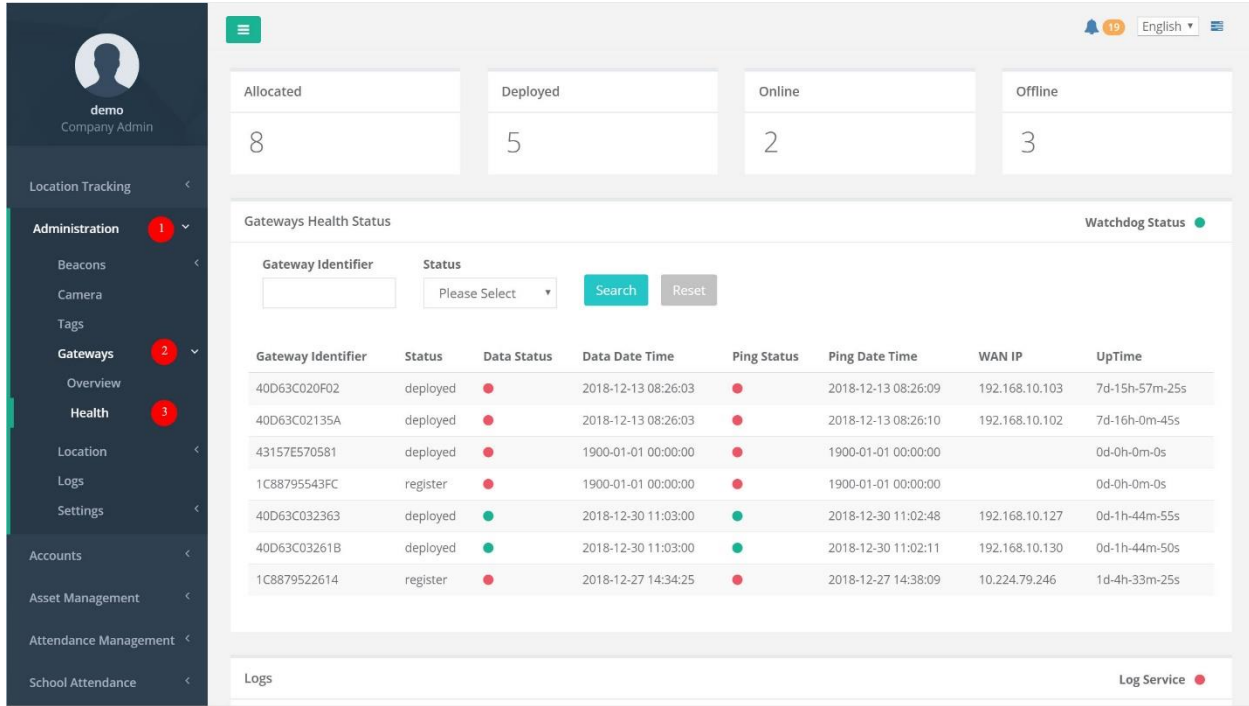


Figure 12 Gateway Status at ALS

The above figure shows the status of devices

3.3 FMS Testing

1. Now click on “Dashboard” under Fleet Management.
2. Now you can view the current location of the vehicle.

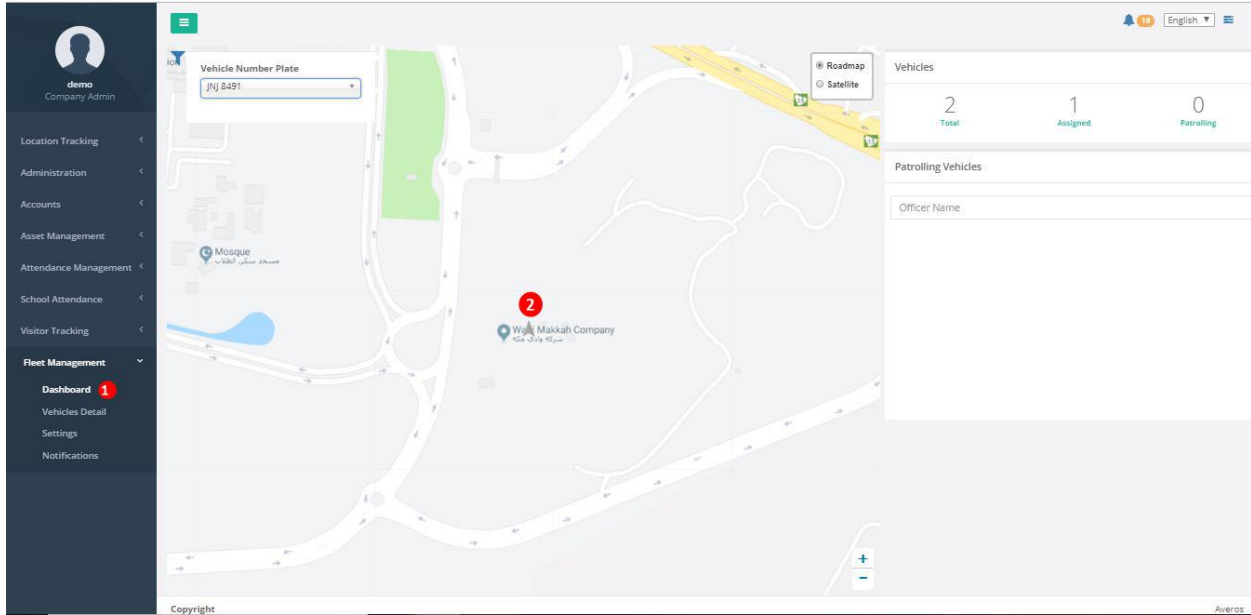


Figure 13 Vehicle Location