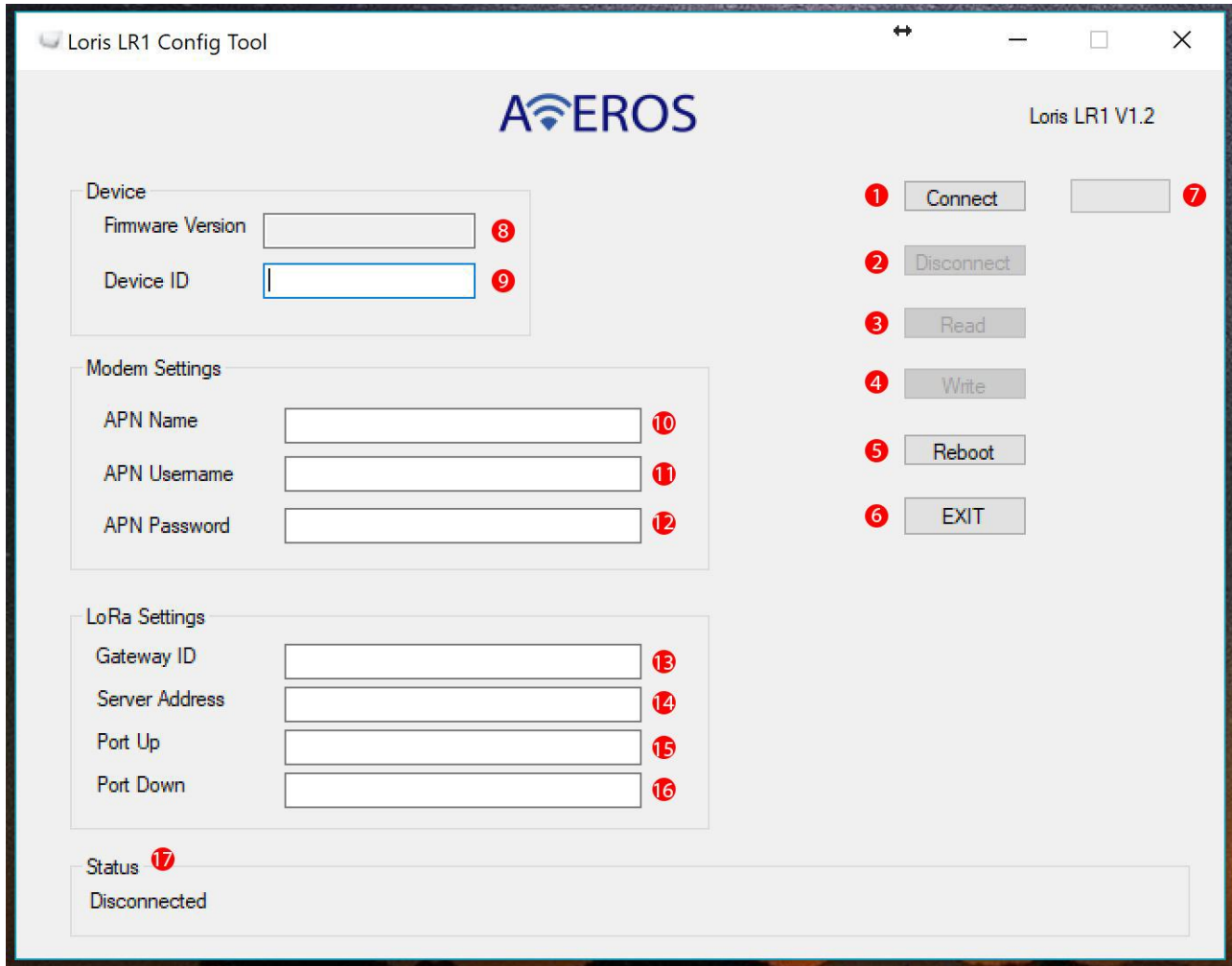


<b>Product Name</b>	Loris LR Configuration Tool Guide
<b>Product Owner</b>	Syed Salman Alam
<b>Rev #</b>	1.0
<b>Release date</b>	10 <sup>th</sup> Feb 2018



- 1) Connect Button: After Plugging in Loris wait for 2 minutes then click connect to make connection.
- 2) Disconnect Button: Disconnect Loris
- 3) Read Button: Read configuration from Loris
- 4) Write Button: Write configuration in Loris
- 5) Reboot Button: Reboot the hardware. Note that reboot is required after changing configuration
- 6) Exit Button: Close the configuration application
- 7) Connection Status: Shows the connection status
- 8) Firmware version: Show the firmware version of Loris
- 9) Device ID: Device ID of Loris.
- 10) APN Name: APN Name of Data SIM
- 11) APN User Name: APN User Name of data SIM. If there is no user name leave it blank.
- 12) APN Password: APN password of data SIM. If there is no password leave it blank.
- 13) Gateway ID: LoRa gateway ID. This will be the ID of LoRa Gateway
- 14) Server Address: LoRa gateway server address
- 15) Port Up: LoRa gateway port up
- 16) Port Down: LoRa gateway port down
- 17) Status: Current status of the configuration application