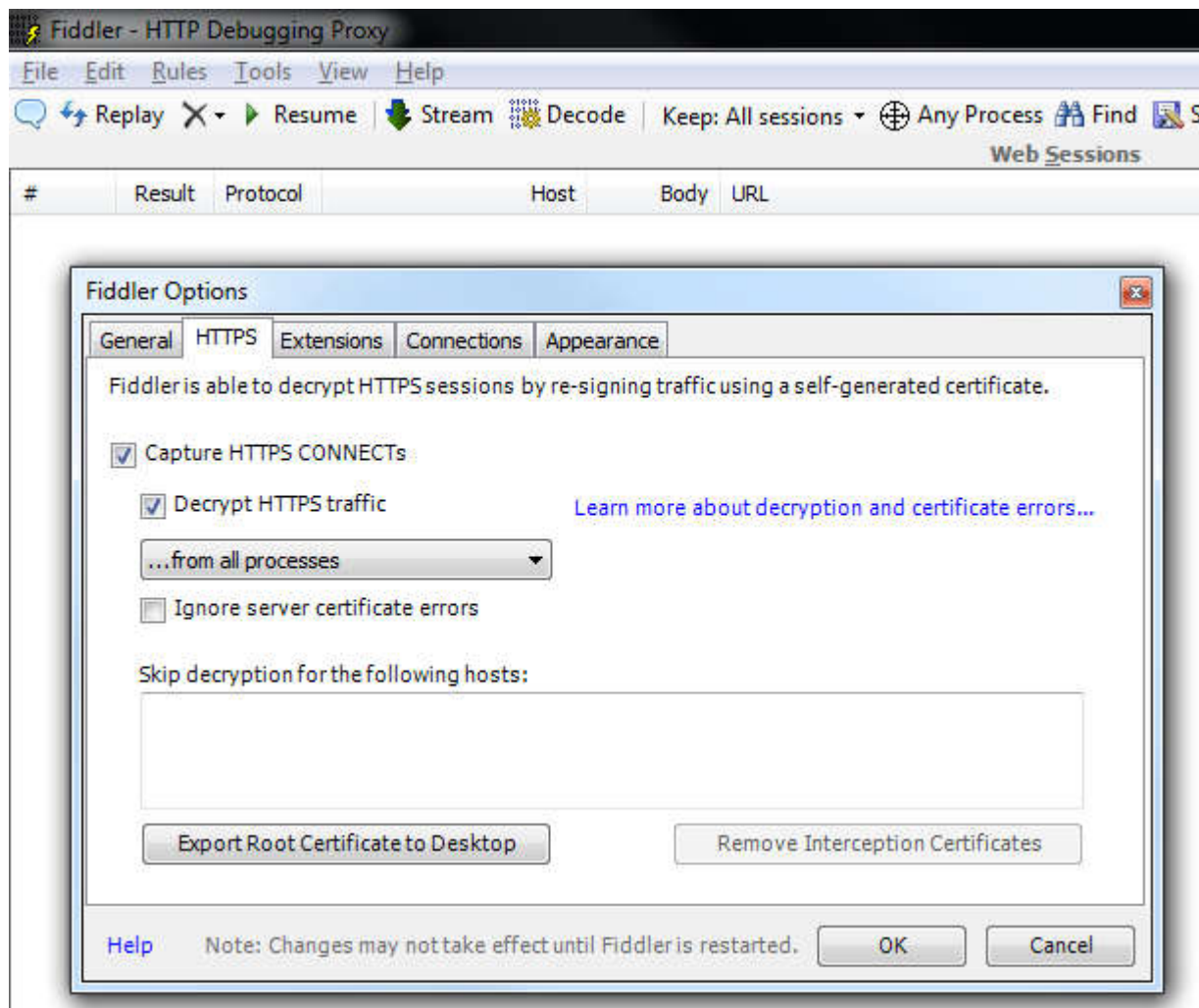


How to capture a Fiddler Log

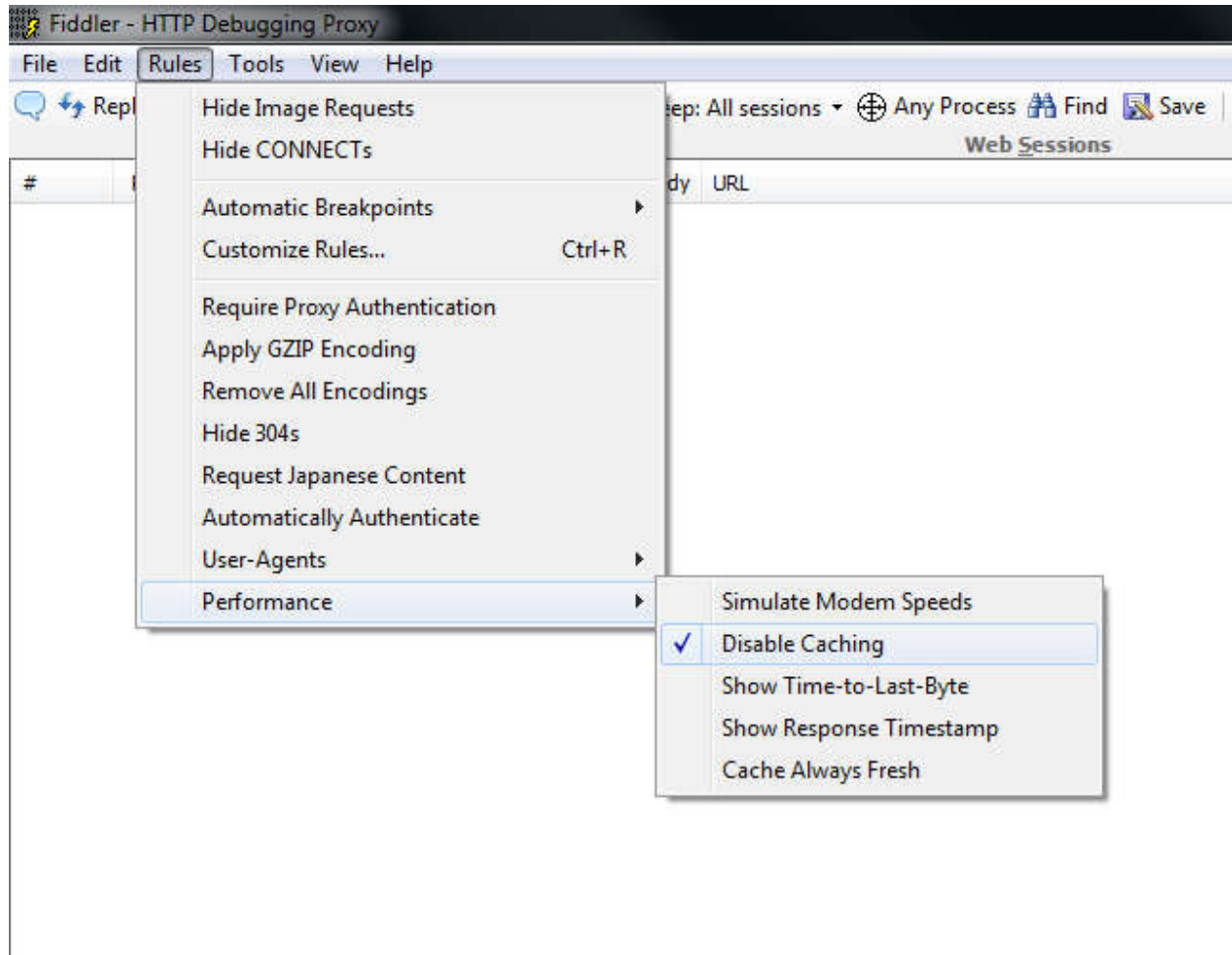
Sending a Fiddler Log

Fiddler is a program which will capture very useful troubleshooting information for SAI's tech support staff.

1. Download and install Fiddler2 from:
<http://www.fiddler2.com/fiddler2/version.asp>
2. **Close all web browsers.**
3. Start Fiddler from the Start Menu.
4. Enable Decrypt HTTPS traffic:
Tools > Options > HTTPS > Check of "Decrypt HTTPS traffic" (Click "Yes" to accept the security certificate, if prompted)



5. **Disable Caching.**



6. Open **ONE** browser and reproduce the problem using your web browser.
7. Switch to Fiddler and choose File -> Save -> All Sessions...
8. Send the file that you saved to Maxit
9. Close Fiddler