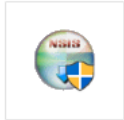




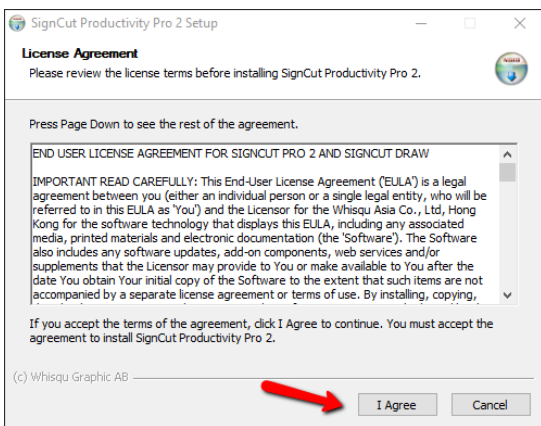
Install SignCut Pro 2 Windows

To download SignCut go to: <https://signcutpro.com/download/>
Click the download button for Windows.

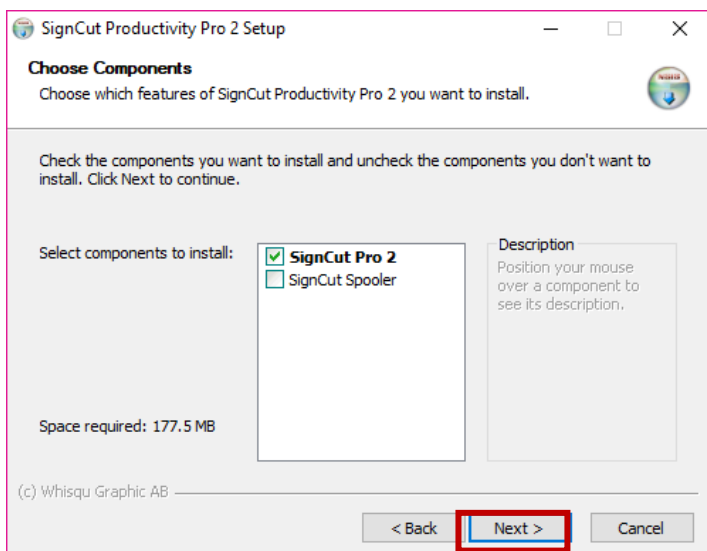


scpro2.exe

Locate the downloaded file in your download folder and double-click it.



Read and accept our terms and conditions.

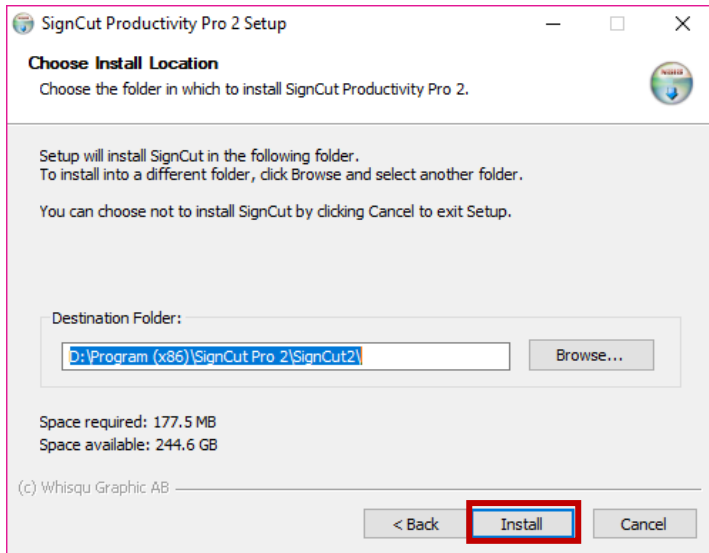


Select which component to install.

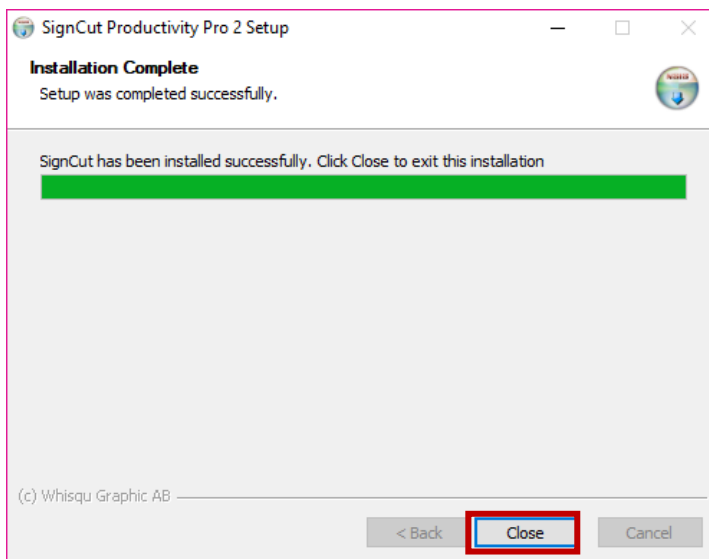
SignCut Pro 2 works for
Home and Student version
Standard version
Premium version

SignCut Spooler works only for our
Premium users.

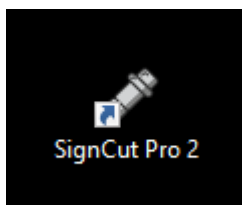
Click **“Next”**.



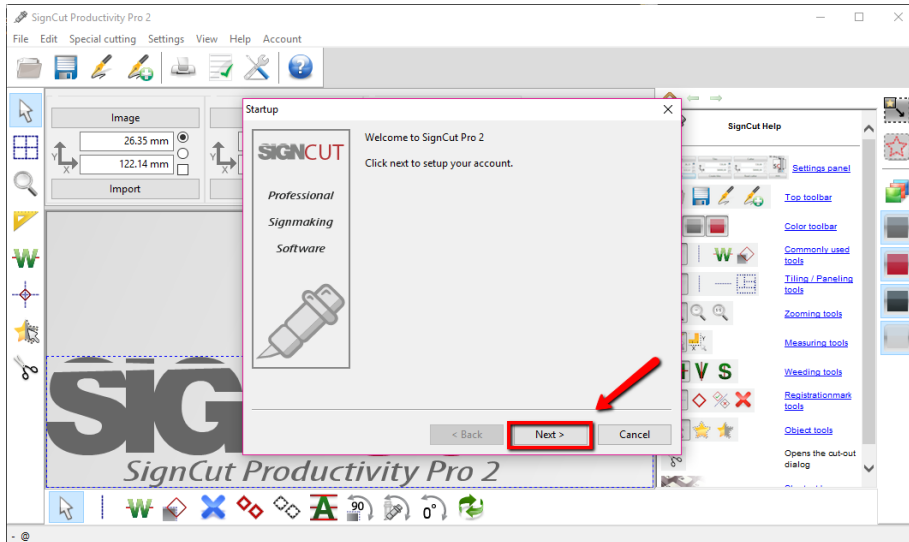
Select where to save SignCut Pro 2 and click **“Install”**.



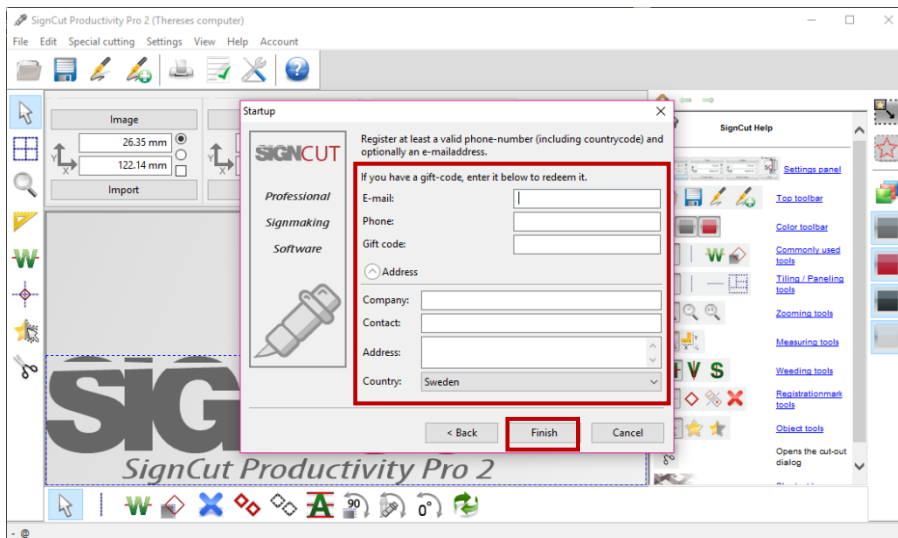
Click **“Close”**



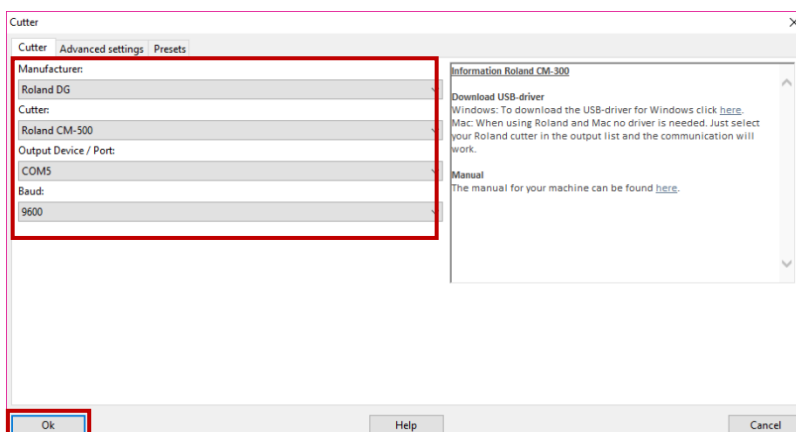
Locate the SignCut icon on your desktop and **double-click** it.



Click **“Next”** in the welcome screen.



In the registration screen you enter your personal information. This is not required but needed if you want to print out a receipt later or for us to find you in our system when you contact our support. If you received a gift code from your reseller this is where you enter it. Click **“Finish”**.



Now the cutter dialogue shows up. Select your manufacturer, cutter model, output device and baud. Once done click **“Ok”** and you are now up and running with SignCut.

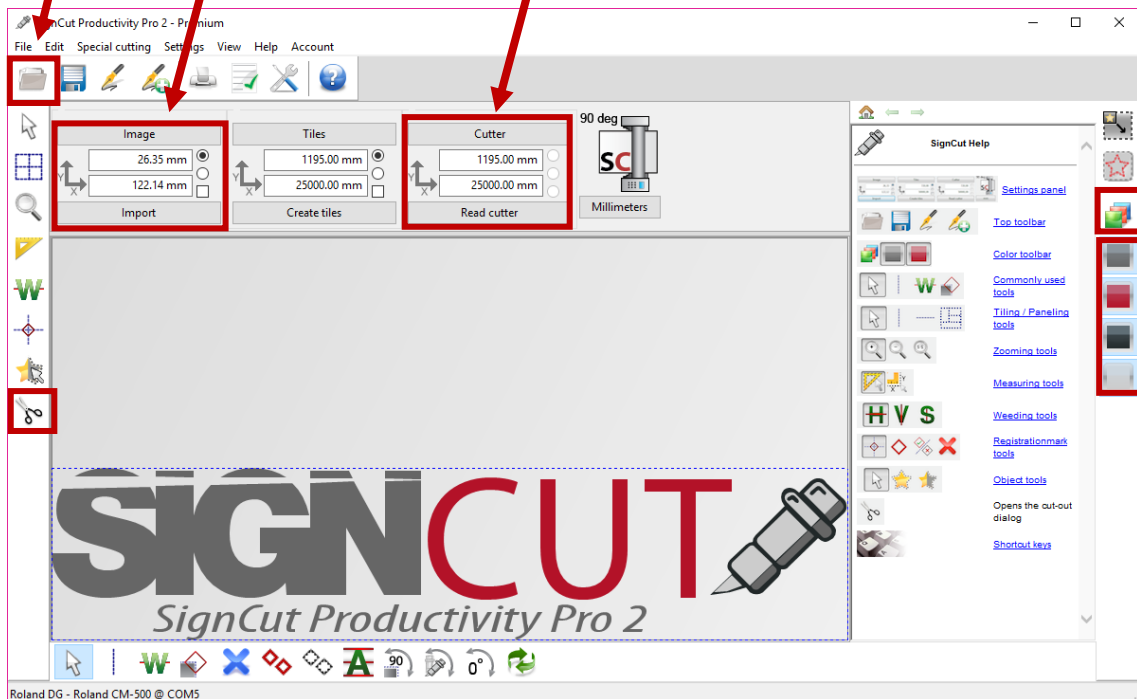


Good things to know when using SignCut.

Open design

Image size

Material size



Select all colours

Colour separation
Select which
colour to cut

Cut out

If you want to know more about a feature in SignCut move the mouse pointer over it and a tool tip dialogue will show up. If you click the feature you will also see a short description in the built-in help in SignCut.

If you don't want the built-in help to be shown click View menu > Show help panel