

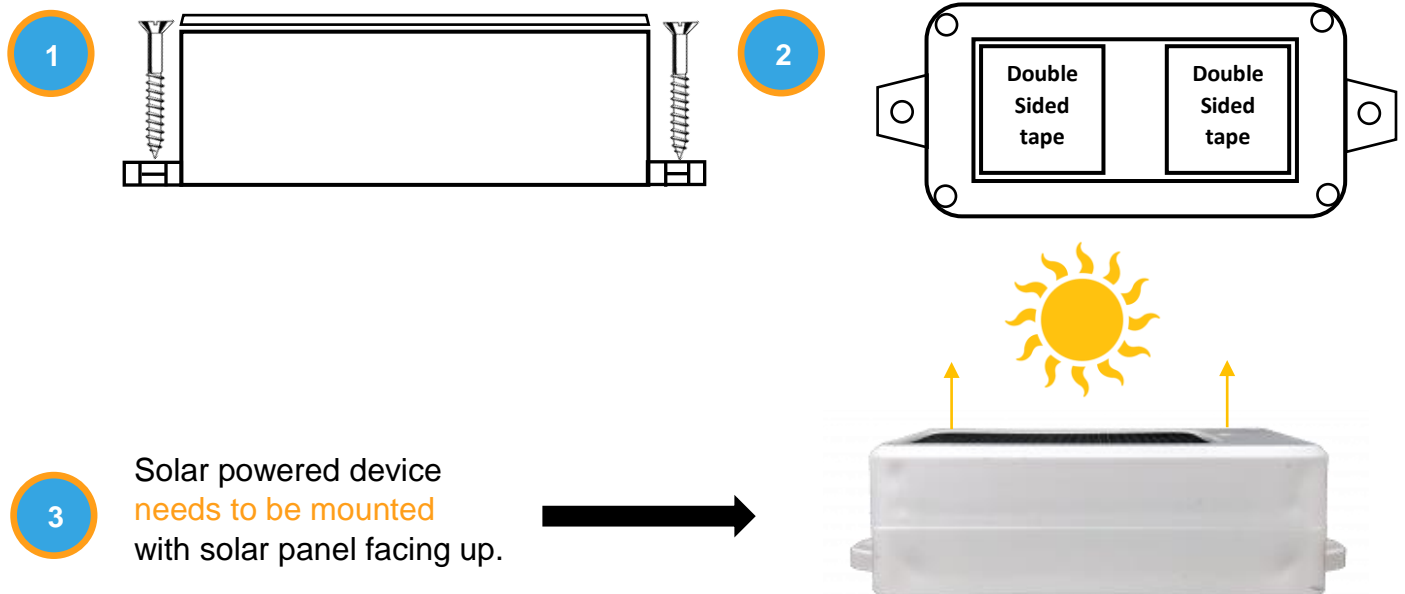
# Solar Asset Tracker

## Mounting Instructions

1. Select a location to mount the device. It must be able to see the sky.
2. Use two self-tapping screws provided to mount the device to a flat secure surface. You can also use zip ties or high strength double sided tape.

**Solar – powered devices need to be mounted panel facing up.**

Do not overtighten the self-taping screws as they will crack the base if overtightened.



3 Solar powered device needs to be mounted with solar panel facing up.

### Dimensions (mm/inches):

- Length: 100.6 / 3.96
- Length with tabs: 124.1 / 4.89

- Width: 56.6 / 2.23
- Height: 33.7 / 1.33

5.6 oz  
145 g

### IMPORTANT: NETWORK AND GPS ACCURACY

1. Metal can block GPS signals from the satellites and this can significantly reduce the quality of tracking data.
2. Avoid mounting the device facing inside the assets metal frame.
3. Avoid mounting the device under heavy metal or near fuse distribution center as this may reduce range of cellular transmission.