

## Microsoft Surface 3 / Surface 4 - Optimal Screen Resolutions

The default resolution on the current generation tablets are amazingly small and some apps and applications like TM2 might be so small to read.

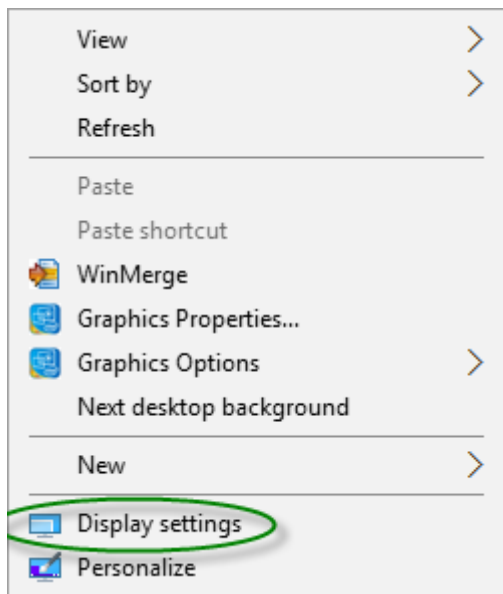
This document will help explain for the most common devices we deal with however the same concept can be used with any device running Windows 8.1 or Windows 10 that has a small screen with a high resolution.

Most recommendations to counter small screen size this is to increase your "Font Size" in your tablet or notebooks display settings however a lot of apps and applications begin to not display correctly with labels and text boxes being cropped or not displaying on the screen.

Below shows the default resolution of the Surface 3, Surface 3 Pro and Surface 4 and then recommended display setting that make TM2 more comfortable to use on the 12 inch screen.

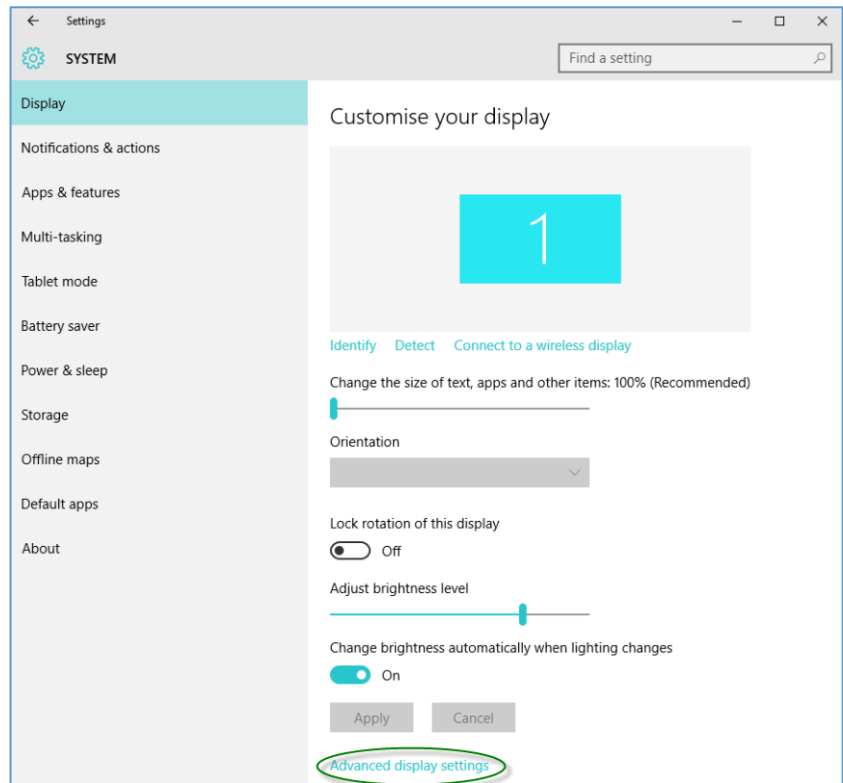
<b><u>Microsoft Surface 3</u></b>	<b><u>Microsoft Surface 3 Pro</u></b>	<b><u>Microsoft Surface 4 Pro</u></b>
3:2 Aspect Ratio	3:2 Aspect Ratio	3:2 Aspect Ratio
Default Resolution 1920 x 1280	Default Resolution 2160 x 1440	Default Resolution 2736 x 1824
Recommended Font Scaling 100%	Recommended Font Scaling 100%	Recommended Font Scaling 100%
<b>Recommended Resolution <a href="#">1440 x 900</a></b>	<b>Recommended Resolution <a href="#">1440 x 900</a></b>	<b>Recommended Resolution <a href="#">1600 x 900</a></b>

To change the resolution on your device simply right click your desktop background and select [Display Settings]



Scroll to the bottom of the Settings window and select [Advanced display Settings]

**\*Note:** Font Size should be set to 100% (Recommended) this is controlled by a slider on this window.



Select the recommended resolution from the table above that relates to your device and click [Apply] A message with a count down will come across the screen asking you to confirm your selection.

**\*Note:** You might notice slight letterboxing of your screen. You can play with the resolutions to find one that suits your needs best. Your device should not allow you to select a resolution that it can't display however if it does you might find the screen will go black for 15 seconds it will go back the last good known resolution.

