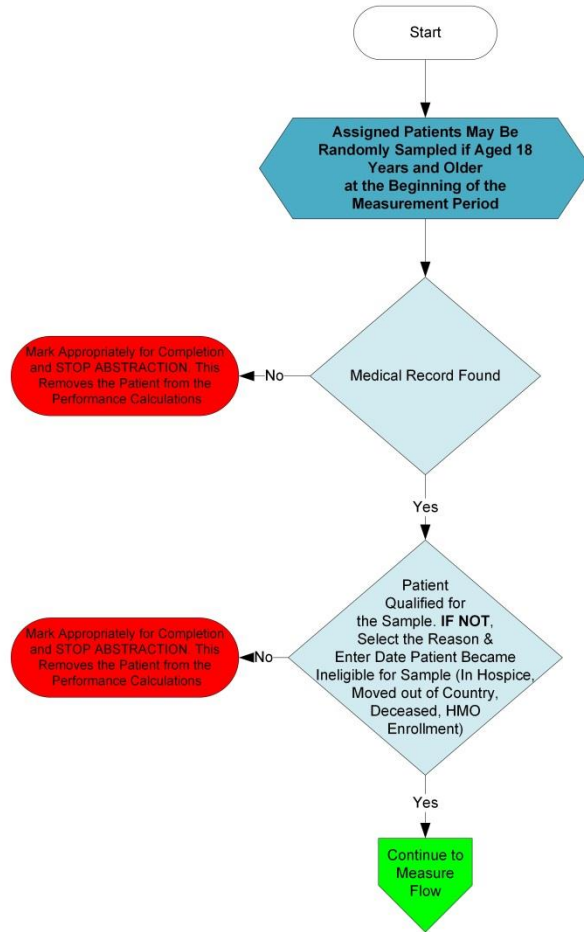


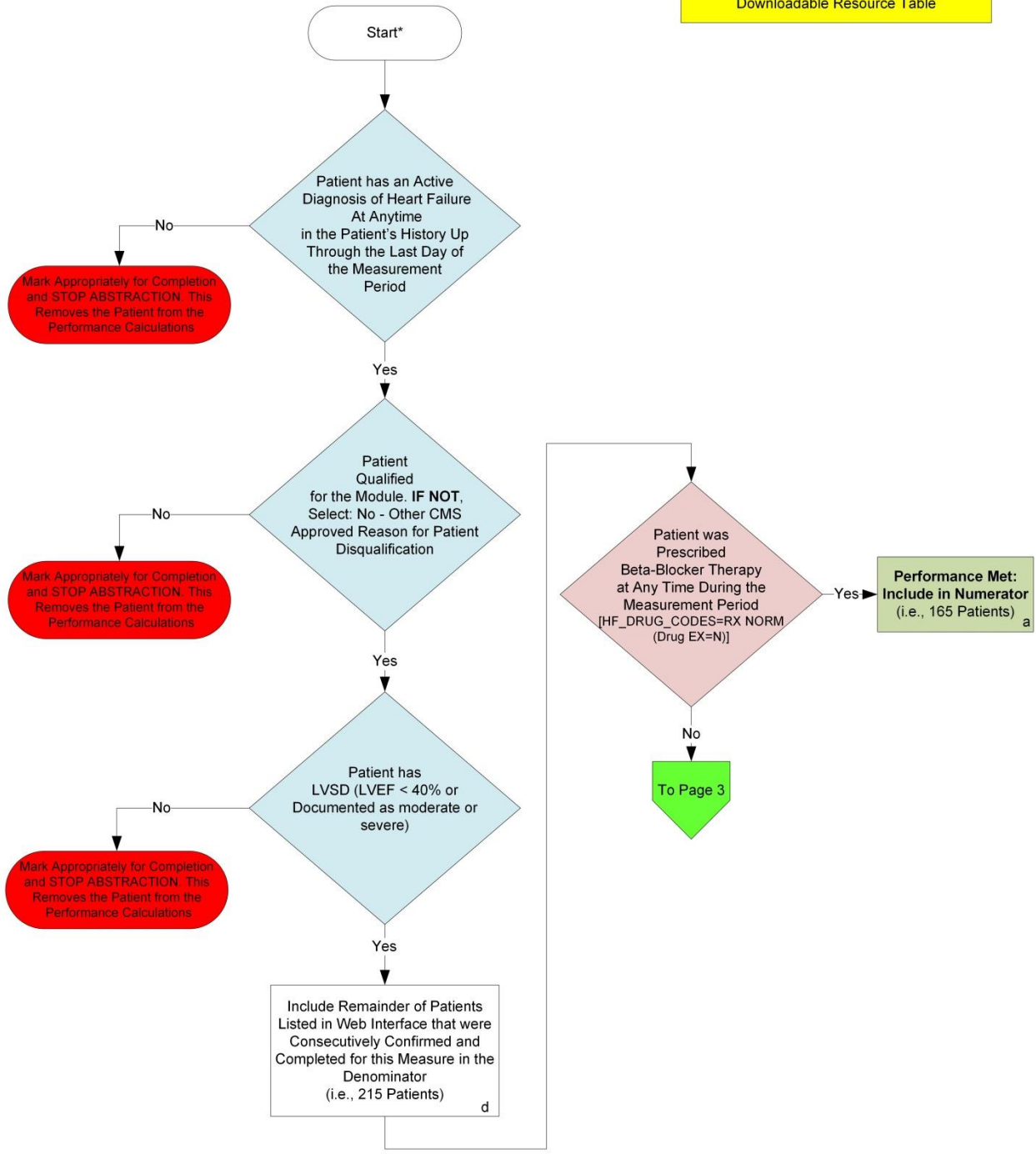
Patient Confirmation Flow for HF-6

For 2014, confirmation of the "Medical Record Found", or indicating the patient is "Not Qualified for Sample" with a reason of "In Hospice", "Moved out of Country", "Deceased", or "HMO Enrollment", will only need to be done **once** per patient. For module or measure specific reasons a patient is "Not Confirmed" or excluded for "Other CMS Approved Reason", please refer to the associated Data Guidance.



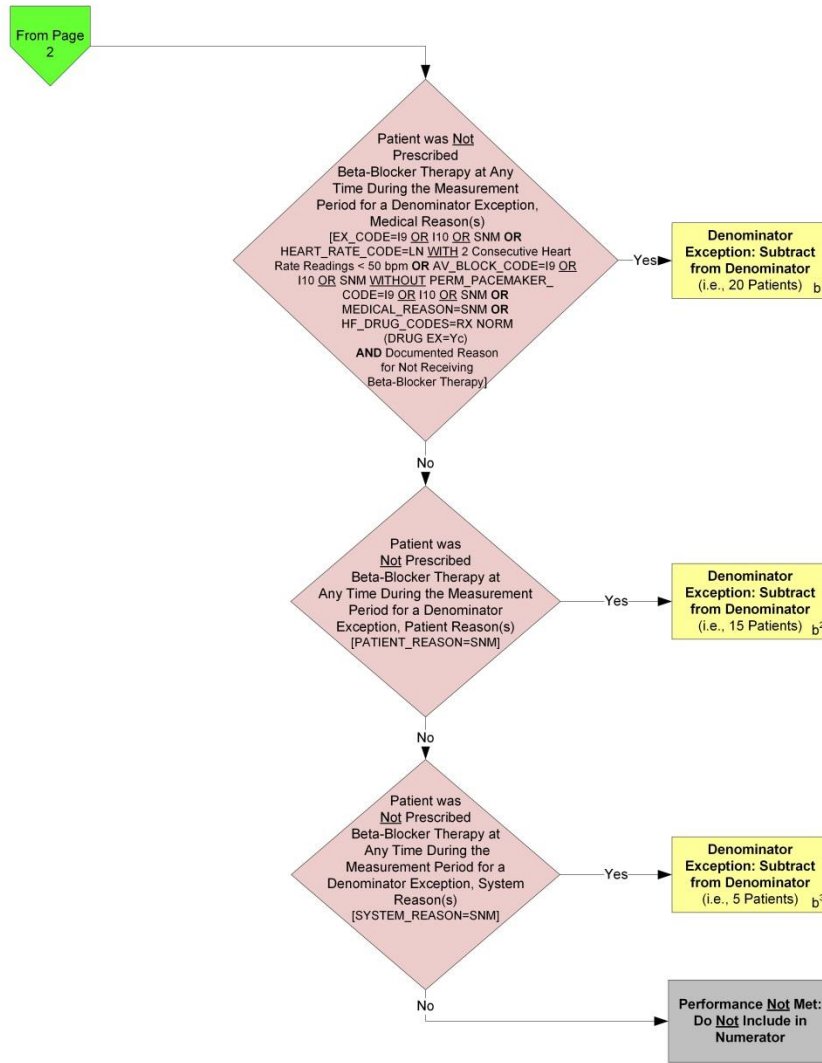
2014 GPRO-HF-6 (NQF 0083): Heart Failure: Beta-Blocker Therapy for Left Ventricular Systolic Dysfunction (LVSD)
 This flow applies to GPRO Web Interface

Variable Names in Brackets [] can be found in the tabs within the HF Downloadable Resource Table



*See Data Guidance for further instructions to report this measure
 **EX represents Exclusions and Exceptions as appropriate

2014 GPRO-HF-6 (NQF 0083): Heart Failure: Beta-Blocker Therapy for Left Ventricular Systolic Dysfunction (LVSD)
 This flow applies to GPRO Web Interface



SAMPLE CALCULATION:

Performance Rate=
 Performance Met (a = 165 Patients) / Eligible Denominator (d=215 Patients) - Denominator Exception (b¹=20 Patients - b²=15 Patients - b³=5 Patients) = 165 Patients / 175 Patients = 94.29%

CALCULATION MAY CHANGE PENDING PERFORMANCES MET ABOVE

*See Data Guidance for further instructions to report this measure
 **EX represents Exclusions and Exceptions as appropriate

Patient Confirmation Flow for HF-6

For 2014, confirmation of the “Medical Record Found”, or indicating the patient is “Not Qualified for Sample” with a reason of “In Hospice”, “Moved out of Country”, “Deceased”, or “HMO Enrollment”, will only need to be done **once** per patient. For module or measure specific reasons a patient is “Not Confirmed” or excluded for “Other CMS Approved Reason”, please refer to the associated Data Guidance.

1. Start HF-6 Patient Confirmation Flow. Assigned patients may be randomly sampled if aged 18 years and older at the beginning of the measurement period.
2. Check to determine if Medical Record can be found
 - a. If no, Medical Record not found, mark appropriately for completion and stop abstraction. This removes the patient from the performance calculation.
 - b. If yes, Medical Record found, continue processing.
3. Check to determine if the Patient Qualified for the sample
 - a. If no, the patient does not qualify for the sample, select the reason why and enter the date the patient became ineligible for sample. For example; In Hospice, Moved out of Country, Deceased, HMO Enrollment. Mark appropriately for completion and stop abstraction. This removes the patient from the performance calculations. Stop processing.
 - b. If yes, the patient does qualify for the sample; continue to the 2014 GPRO-HF-6 measure flow.

2014 GPRO-HF-6 (NQF 0083): Heart Failure: Beta-Blocker Therapy for Left Ventricular Systolic Dysfunction (LVSD)

This flow applies to GPRO Web Interface

Variable names can be found in the tabs within the HF Downloadable Resource Table.

See Data Guidance for further instructions to report this measure.

EX represents Exclusion or Exception as appropriate.

1. Start processing 2014 GPRO-HF-6 (NQF 0083) Flow for the patients that qualified for sample in the HF-6 Patient Confirmation Flow.
2. Check to determine if the patient has an active diagnosis of Heart Failure, at anytime in the patient's history up through the last day of the measurement period.
 - a. If no, the patient does not have an active diagnosis of Heart Failure, at anytime in the patient's history up through the last day of the measurement period, mark appropriately for completion and stop abstraction. This removes the patient from the performance calculations. Stop processing.
 - b. If yes, the patient does have an active diagnosis of Heart Failure, at anytime in the patient's history up through the last day of the measurement period, continue processing.
3. Check to determine if the patient qualified for the module
 - a. If no, the patient did not qualify for the module select: No – Other CMS Approved Reason for patient disqualification. Mark appropriately for completion and stop abstraction. This removes the patient from the performance calculations. Stop processing.
 - b. If yes, the patient does qualify for the module, continue processing
4. Check to determine if the patient has LVSD (LVEF < 40% or documented as moderate or severe)
 - a. If no, the patient does not have LVSD (LVEF < 40% or documented as moderate or severe), mark appropriately for completion and stop abstraction. This removes the patient from the performance calculations. Stop processing.
 - b. If yes, the patient does have LVSD (LVEF < 40% or documented as moderate or severe), the patient will be included in the eligible denominator for performance rate calculations. Note: Include remainder of patients listed in the Web Interface that were consecutively confirmed and completed for this measure in the denominator. For the sample performance rate calculation in the flow these patients would fall into the 'd' category (eligible denominator, i.e. 215 patients). Continue processing.
5. Check to determine if the patient was prescribed Beta-Blocker Therapy at any time during the measurement period. Variable Names: HF_DRUG_CODES=RXNORM (Drug EX=N).
 - a. If yes, the patient was prescribed Beta-Blocker Therapy at any time during the measurement period, performance is met and the patient will be included in the numerator. For the sample performance rate calculation in the flow these patients would fall into the 'a' category (numerator, i.e. 165 patients). Stop processing.
 - b. If no, the patient was not prescribed Beta-Blocker Therapy at any time during the measurement period, continue processing.
6. Check to determine if the patient was NOT prescribed Beta-Blocker Therapy at any time during the measurement period for a denominator exception, medical reason(s). Variable Names: EX_CODE=I9 OR I10 OR SNM OR HEART_RATE_CODE=LN WITH 2 Consecutive Heart Rate

Readings < 50 bpm **OR** AV_BLOCK_CODE=I9 OR I10 OR SNM WITHOUT
PERM_PACEMAKER_CODE=I9 OR I10 OR SNM **OR** MEDICAL_REASON=SNM **OR**
HF_DRUG_CODES=RXNORM (DRUG EX=Yc) **AND** documented reason for not receiving Beta-
Blocker Therapy.

- a. If yes, the patient was Not prescribed Beta-Blocker Therapy at any time during the measurement period for a denominator exception, medical reason(s), this is a denominator exception and the case should be subtracted from the eligible denominator. For the sample performance rate calculation in the flow these patients would fall into the 'b¹' category (denominator exception, i.e. 20 patients). Stop processing.
 - b. If no, the patient was Not prescribed Beta-Blocker Therapy at any time during the measurement period for a denominator exception, medical reason(s), continue processing.
7. Check to determine if the patient was Not prescribed Beta-Blocker Therapy at any time during the measurement period for a denominator exception, patient reason(s). Variable Names:
PATIENT_REASON=SNM
- a. If yes, the patient was Not prescribed Beta-Blocker Therapy at any time during the measurement period for a denominator exception, patient reason(s), this is a denominator exception and the case should be subtracted from the eligible denominator. For the sample performance rate calculation in the flow these patients would fall into the 'b²' category (denominator exception, i.e. 15 patients). Stop processing.
 - b. If no, the patient was Not prescribed Beta-Blocker Therapy at any time during the measurement period for a denominator exception, patient reason(s), continue processing.
8. Check to determine if the patient was Not prescribed Beta-Blocker Therapy at any time during the measurement period for a denominator exception, system reason(s). Variable Names:
SYSTEM_REASON=SNM
- a. If yes, the patient was Not prescribed Beta-Blocker Therapy at any time during the measurement period for a denominator exception, system reason(s), this is a denominator exception and the case should be subtracted from the eligible denominator. For the sample performance rate calculation in the flow these patients would fall into the 'b³' category (denominator exception, i.e. 5 patients). Stop processing.
 - b. If no, the patient was Not prescribed Beta-Blocker Therapy at any time during the measurement period for a denominator exception, system reason(s), performance is not met and should not be included in the numerator. Stop processing.

Sample Calculation

Performance Rate Equals

Performance Met is category 'a' in the measure flow (165 patients)

Eligible Denominator is category 'd' in measure flow (215 patients)

Denominator Exception is category 'b¹' plus b² plus b³ in measure flow (40 patients)

165 (Performance Met) divided by 175 (Eligible Denominator minus Denominator Exception) equals a performance rate of 94.29 percent

Calculation May Change Pending Performance Met