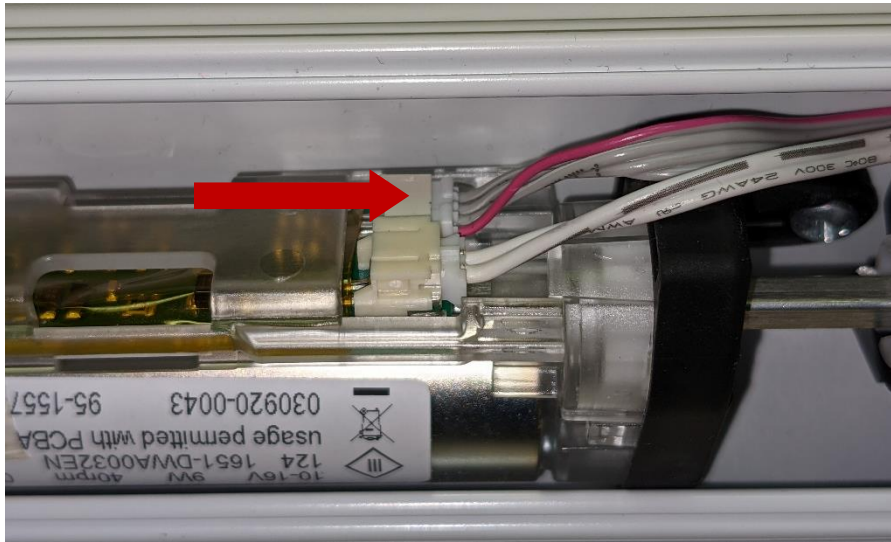


TASK: Z-wave Cellular and Pleated Endcap Assembly (2019 shades and newer with new Z-Wave motor)

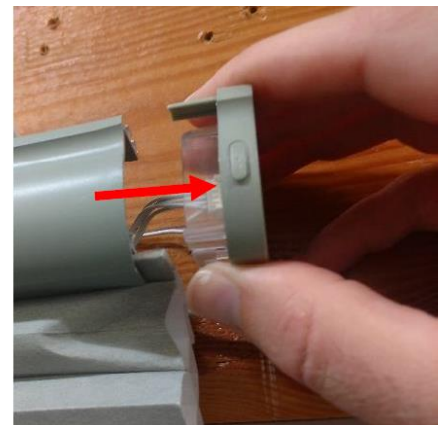
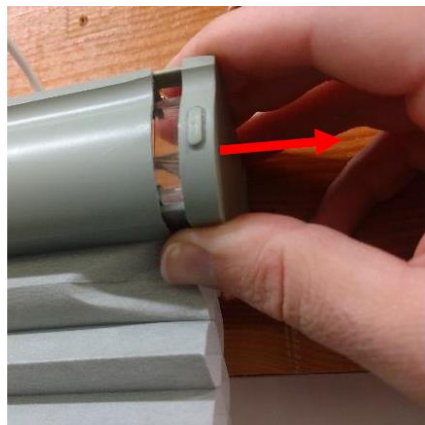
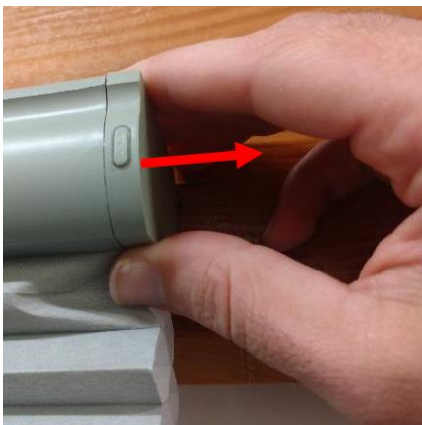
Use If/When: Z-wave endcap button or control board needs replaced.

Tools Needed: None

1. Disconnect power from the shade.
Remove dust cover, starting with top corner. Run flathead screwdriver across the top to separate it from the headrail. Place pressure on the back to remove.
2. Disconnect endcap cable by gently pulling wire connection from socket. (4 wire ribbon)



3. Remove the endcap from the headrail gripping the assembly and pulling away from the headrail.
Note: It may be necessary to wiggle the endcap while pulling to disengage from the notch in the headrail. Once the endcap is removed, slide the ribbon cable out of headrail.

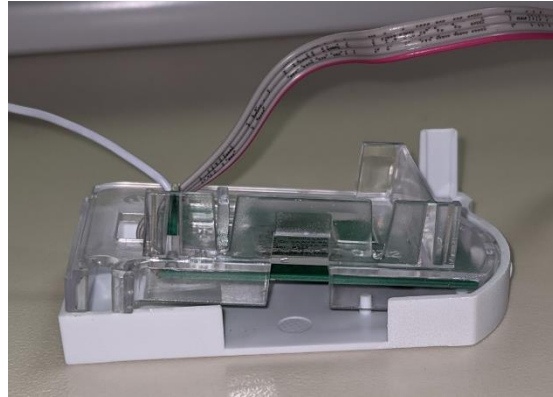
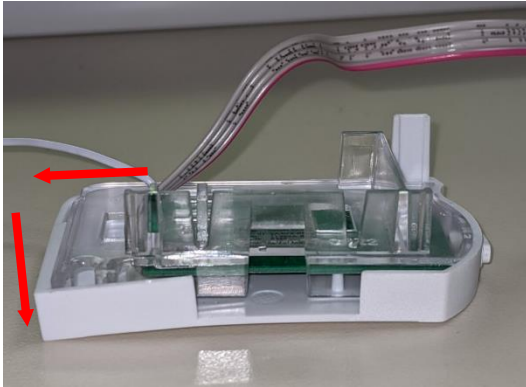


TASK: Z-wave Cellular and Pleated Endcap Assembly (2019 shades and newer with new Z-Wave motor)

Use If/When: Z-wave endcap button or control board needs replaced.

Tools Needed: None

4. Disengage the cover from the housing. Position thumb on the cover and apply force in an outward and downward motion.



5. Gently raise control board out of housing to allow access to the push button.

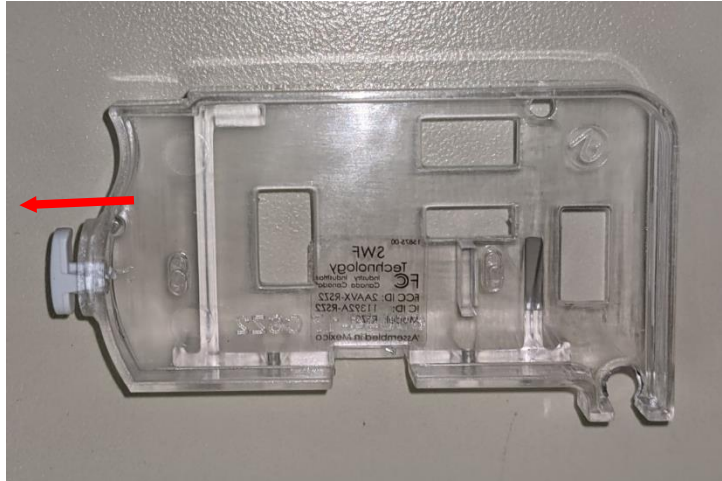


TASK: Z-wave Cellular and Pleated Endcap Assembly (2019 shades and newer with new Z-Wave motor)

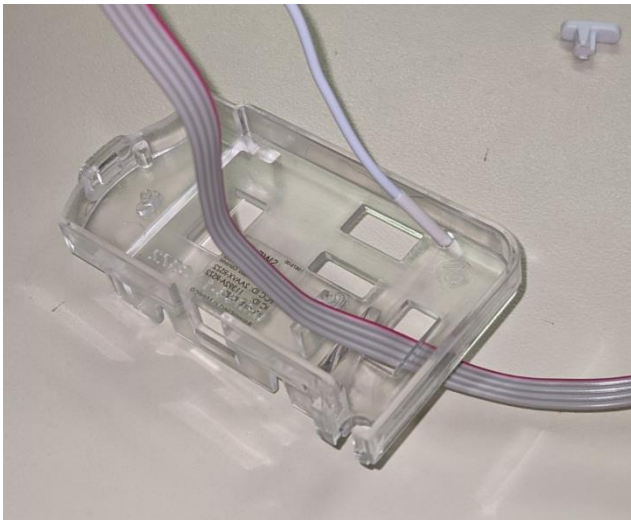
Use If/When: Z-wave endcap button or control board needs replaced.

Tools Needed: None

6. Remove the old push button by pushing out of the housing as shown below.



7. Insert ribbon cable and antenna into endcap housing.



8. Replace the control board into the original position in the housing.

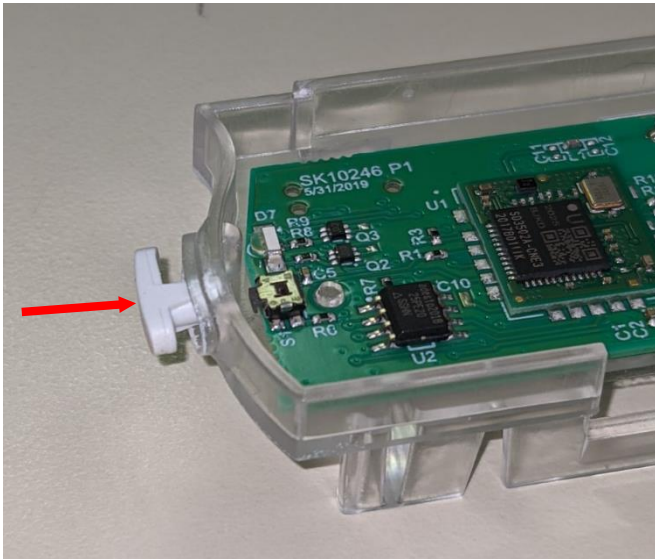


TASK: Z-wave Cellular and Pleated Endcap Assembly (2019 shades and newer with new Z-Wave motor)

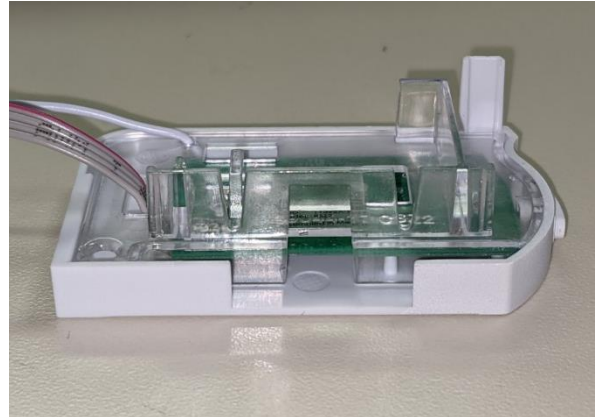
Use If/When: Z-wave endcap button or control board needs replaced.

Tools Needed: None

9. Insert the new push button into the housing by pressing into the housing as shown.



10. Reattach the cover to the housing.



TASK: Z-wave Cellular and Pleated Endcap Assembly (2019 shades and newer with new Z-Wave motor)

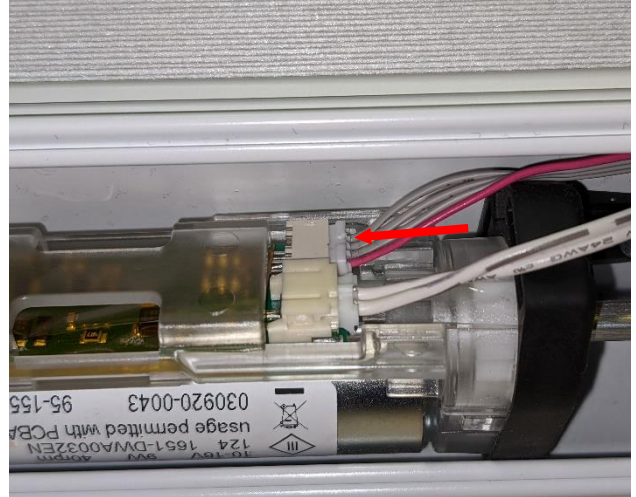
Use If/When: Z-wave endcap button or control board needs replaced.

Tools Needed: None

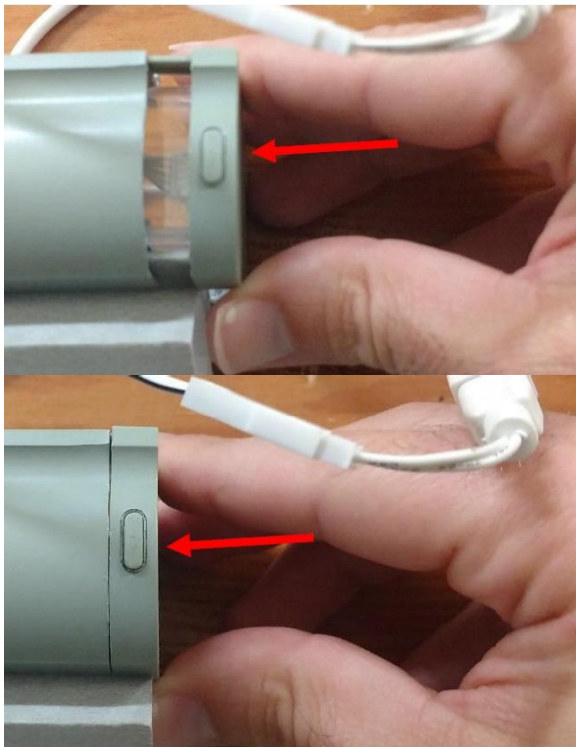
11. Reinsert the endcap ribbon cable alongside the power cable.



12. Reconnect endcap ribbon cable to motor.



13. Install the endcap into the headrail.



14. Reconnect power to the shade and proceed with programming shade to remote.