

TASK: Correct Uneven RTS Motorized Shade Cellular and Pleated

Use If/When: Motorized shade with RTS motor does not hang evenly.

Tools Needed: Carpenter's Level, Flathead Screwdriver, Pen, Tape, Spring Clamp (can be located at Walmart, Ace Hardware, etc)

The internal components can move if the bottomrail is bumped when the shade is in the lowered position.

1. Use a carpenter's level to make sure the brackets, window, and mounting surface are level.



2. Using the remote control that operates the shade, briefly press and release the DOWN button. Allow the shade to reach its lower limit.



3. Once the shade stops, press and hold UP and DOWN simultaneously until the shade jogs.



TASK: Correct Uneven RTS Motorized Shade Cellular and Pleated

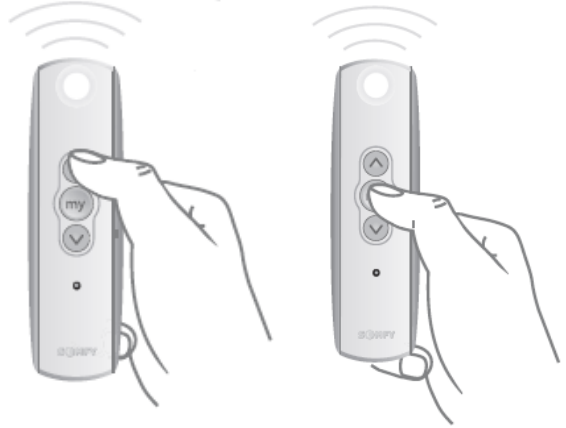
Use If/When: Motorized shade with RTS motor does not hang evenly.

Tools Needed: Carpenter's Level, Flathead Screwdriver, Pen, Tape, Spring Clamp (can be located at Walmart, Ace Hardware, etc)

4. Holding the DOWN button, allow the shade to travel beyond its programmed lower limit; the shade will overextend and may start to raise.
Note: If the bottomrail rests at a window sill, it will be necessary to pull it away from the window so that the bottom rail does not rest on the sill while it is in motion.



5. Using the UP button, bring the shade back to its intended lower limit. Hold the MY/STOP button until the shade jogs.



6. Remove one endcap from the bottomrail.



7. Slide aluminum slat from bottomrail. Placing a piece of tape on the end of the aluminum slat makes it easier to slide.

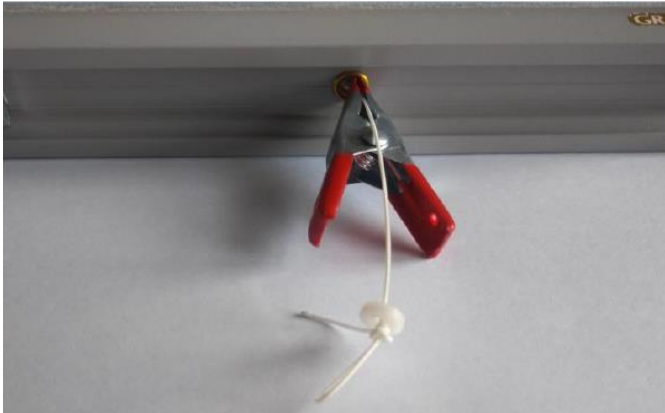


TASK: Correct Uneven RTS Motorized Shade Cellular and Pleated

Use If/When: Motorized shade with RTS motor does not hang evenly.

Tools Needed: Carpenter's Level, Flathead Screwdriver, Pen, Tape, Spring Clamp (can be located at Walmart, Ace Hardware, etc)

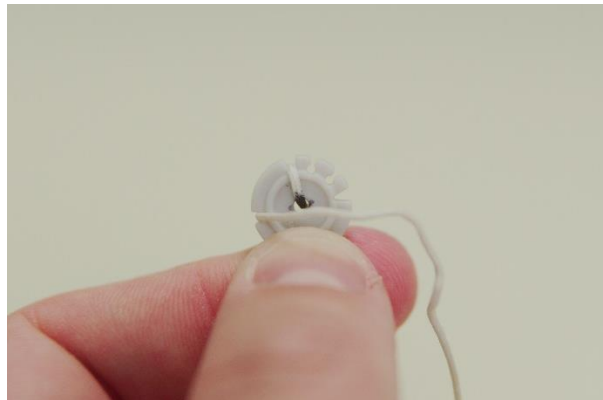
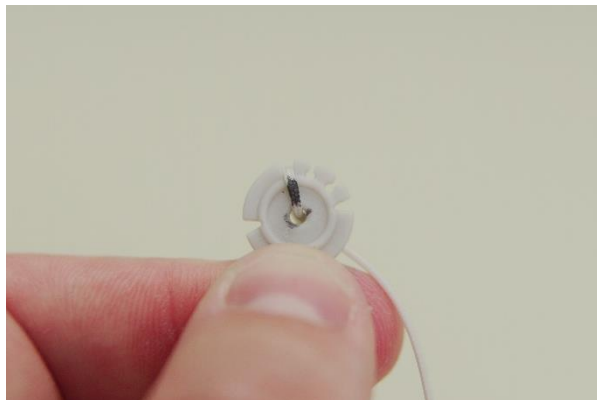
8. Locate cord on the side of the shade that is lower. While holding cord, push on bottomrail securing cord with a Spring Clamp (see Tools Needed).



9. Mark cord with pen to indicate new location for cinch button.



10. Wrap cord up through top left finger opening, down back and through bottom left finger opening.



TASK: Correct Uneven RTS Motorized Shade Cellular and Pleated

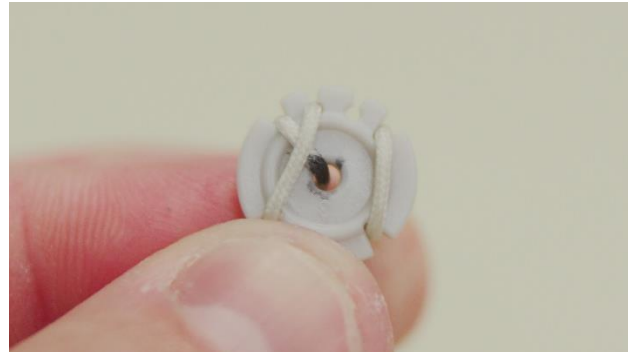
Use If/When: Motorized shade with RTS motor does not hang evenly.

Tools Needed: Carpenter's Level, Flathead Screwdriver, Pen, Tape, Spring Clamp (can be located at Walmart, Ace Hardware, etc)

- 11.** Wrap cord up through second top finger opening, down back and through bottom right finger opening.



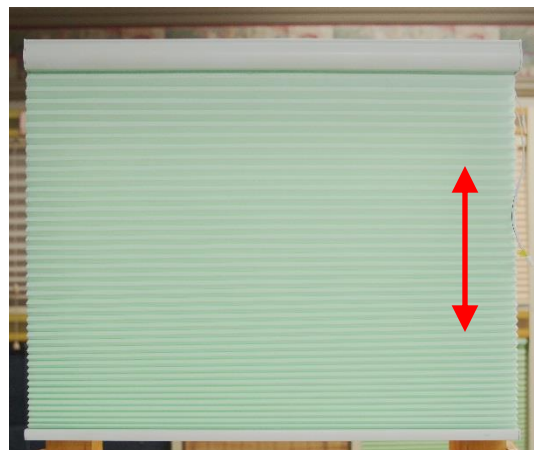
- 12.** Wrap cord up and through top right finger opening, around backside, ending with the cord coming out of the third top finger opening.



- 13.** Snap cinch button into bottomrail.



- 14.** Test shade by raising and lowering several times. Readjust cord as needed if not level.



TASK: Correct Uneven RTS Motorized Shade Cellular and Pleated

Use If/When: Motorized shade with RTS motor does not hang evenly.

Tools Needed: Carpenter's Level, Flathead Screwdriver, Pen, Tape, Spring Clamp (can be located at Walmart, Ace Hardware, etc)

- 15.** Once shade is level, replace aluminum slat and endcap being careful not to dent slat. *Hint: Placing a piece of tape on end of slat makes it easier to slide back in.*



- 16.** Test shade by raising and lowering several times. Readjust cord as needed if not level.

