

Sales Ratio Extract

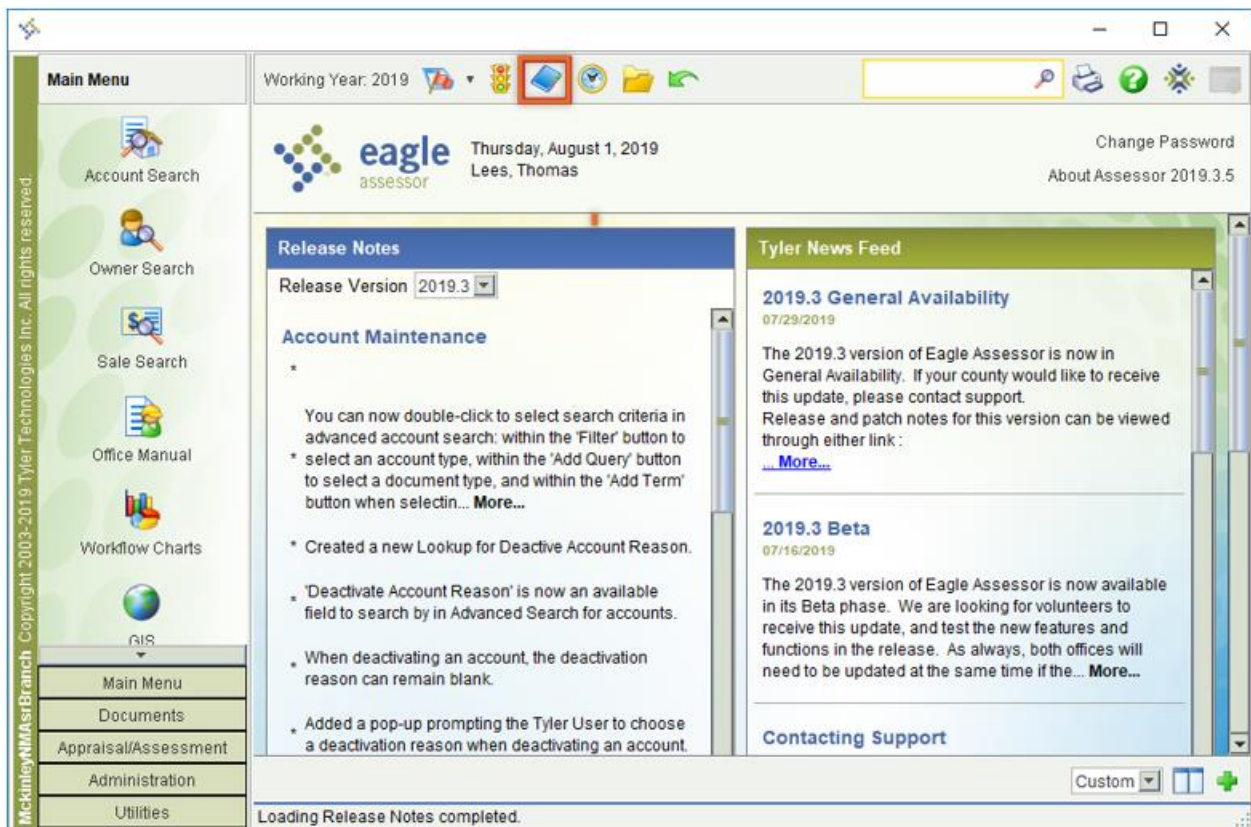
Eagle Assessor

OVERVIEW

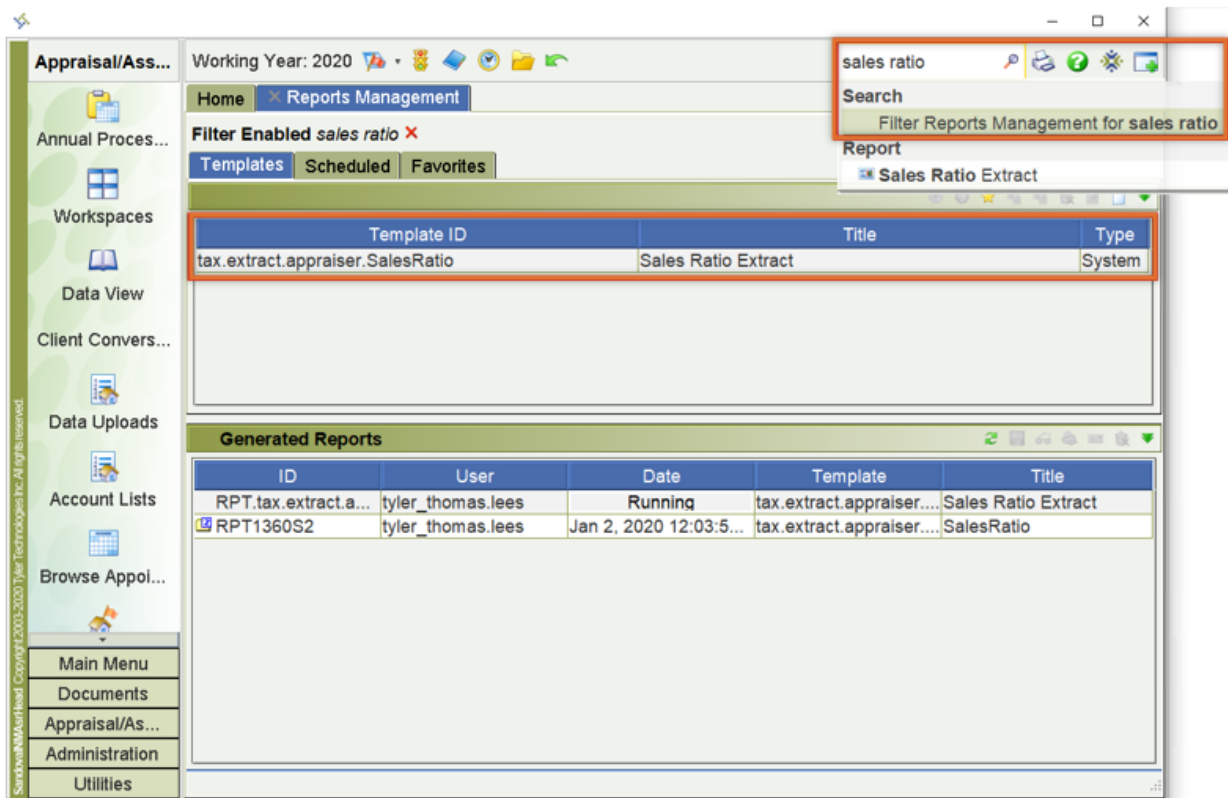
Eagle Assessor has a Sales Ratio Extract that can be run over all accounts in the system, or by an account search. This report can be used to report information to the State of New Mexico. This is a system-defined CSV report that contains headers for easily identifying information.

Sales Ratio Extract from the Reports Manager

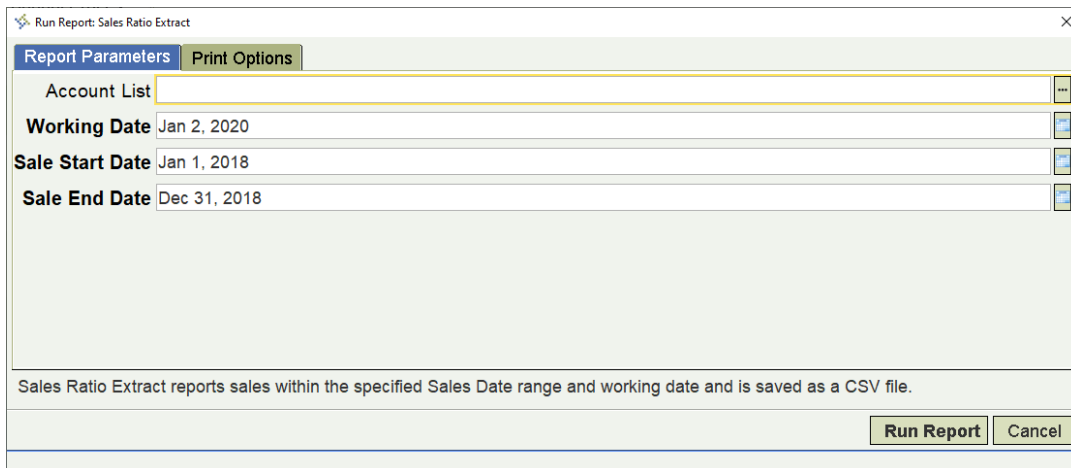
1. Click the Report Manager icon



2. Scroll through the report templates, or utilize the Quick Search bar to filter Report Management for the Sales Ratio Extract (tax.extract.appraiser.SalesRatio).



3. Double-click, or select the report and click **Run** to run the report. The required parameters are the Working Date, Sale Start Date and Sale End Date. An Account list can be used to limit the output to just sales on those accounts, however, if that parameter is left empty, the report runs over all accounts.



- Retrieve the report from the Generated Reports section of your Report Manager.

SandovalNMAsrHead - Reports Management

Working Year: 2020 sales ratio

Home Reports Management

Filter Enabled sales ratio

Templates Scheduled Favorites

Template ID	Title	Type
tax.extract.appraiser.SalesRatio	Sales Ratio Extract	System

Generated Reports

ID	User	Date	Template	Title
RPT1360S2	tyler_thomas.lees	Jan 2, 2020 12:03:5...	tax.extract.appraiser....	SalesRatio
RPT.tax.extract.a...	tyler_thomas.lees	Running	tax.extract.appraiser....	Sales Ratio Extract

Access: ARWCD

EMAIL FILE TO SUPPORT@AXIOMNH.COM