





## Let's COLOR!

### Coloring by Number

1. Use the Coloring Number Guide and the Color Key to see which marker should be used in each section.
2. Start at the top and work down, or from left to right if you're a right-hander (right to left if you're a left-hander). This way you won't smear wet ink. *Note, the markers may not dry on foil areas. Use a paper towel to wipe away if needed.*
3. When all sections are colored in, review your work and add any finishing touches.
4. Apply the double-sided mounting tape to the back of the board, one at the top, one at the bottom and one going diagonal across the center.
5. Center the board on the Foam Mounting Board and press down firmly.
6. Attach the sticky-back Hang Tab and hang it on your wall.
7. When you've completed your Color By Number activity, be sure to visit [www.greatartstartshere.com](http://www.greatartstartshere.com) for more fun activities featuring Connector Pens.

### COLOR KEY

- |  |   |
|--|---|
|  Color 1 = Yellow     |  Color 6 = Dark Blue   |
|  Color 2 = Orange     |  Color 7 = Light Green |
|  Color 3 = Red        |  Color 8 = Dark Green  |
|  Color 4 = Tan        |  Color 9 = Olive       |
|  Color 5 = Light Blue |  Color 10 = Brown      |



Color, Connect and Play! Watch our videos featuring fun activities using Connector Pens and your imagination!

**Visit us at:**  
[www.GreatArtStartsHere.com](http://www.GreatArtStartsHere.com)  
 non-toxic • safe for children



Foil Fun Color By Number T-Rex #14309  
 © Faber-Castell USA, Inc.  
 Cleveland, Ohio 44125  
 Designed in USA  
 Markers made in Indonesia  
 All other materials made in China  
 Conforms to ASTM D-4236

ISBN 1-62133-249-7



## LOOK!

Add color and pattern using these techniques



Squiggling



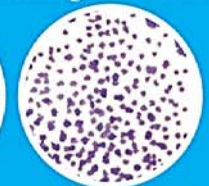
Patterning



Shading



Contour



Pointillism

## What's INSIDE

- Illustration Board with Foil 9" (22.8 cm) square
- 10 Connector Pens
- Color By Number Guide
- Plastic Hanging Tab
- Foam Mounting Board 10.5" (26.7 cm) square
- Double-sided Mounting Tape

(Contents may vary from those shown or listed.)



Use the included color guide or create your own palette!