

© Faber-Castell USA, Inc. Cleveland, Ohio 44125 www.fabercastell.com
Designed in USA - Made in China
10 Pop-Art Rings #1451
Conforms to ASTM D-4236 Non-toxic Safe for Children

Our Quality Promise
Since 1976 Creativity for Kids has been creating safe, innovative products that meet or exceed U.S. safety standards as determined by independent laboratory testing.

Our mission is to provide children with experiences that stimulate and encourage their natural creativity. Our open-ended products offer fun-filled opportunities for children to create, pretend, explore and learn.

www.CreativityforKids.com

*Tell us what you think!
Visit our website and rate this product*

Ages 7 to 97

10 Pop-Art Rings



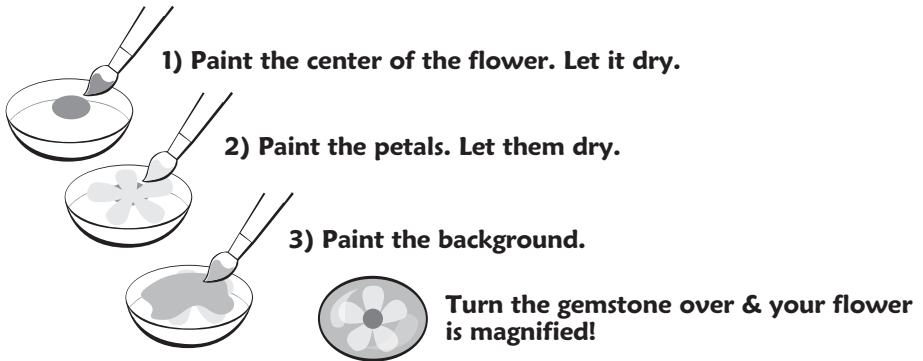
Share these rings with your friends or make one for every finger. You will be using the technique of reverse painting to decorate the clear gemstones. When you paint the flat, back side of the domes and look at them from the other side you will see the reverse of what you painted. Your designs will be magnified and brighter. It is a very cool optical effect.

Important Information about this Paint

- The paint included is a specially formulated non-toxic, ceramic paint that dries permanently on most surfaces, so be careful.
- Cover your work surface with newspaper. Have a cup of water and paper towels handy.
- Wear a smock or old clothes. This paint may stain fabrics and furniture. Clean up any spills immediately while the paint is still wet.
- Paint can settle and separate over time. Mix each color thoroughly before you begin painting. If the paint seems too thick, stir in a drop or two of water.
- Before changing colors, rinse and dry your brush thoroughly.

Reverse Painting the Backs of the Clear Gemstones

To reverse paint on the domes, paint the foreground first, then paint the background. For example, to paint a flower...



Remember to let the paint dry between applications so that the colors are not muddy.

If you are not pleased with some of your painted domes you can wash the paint off with soap and water and paint them again.

Gluing Images to the Back of the Gemstone

- 1) Place a clear stone over a word or image in a magazine to make sure it will fit inside the dome shape.
- 2) Trace around the dome with a pencil.
- 3) Cut out the image following your tracing mark.
- 4) Use your own craft glue to add the image to the back of the stone. The white glue looks cloudy at first, but will dry clear.

Attaching the Gemstones to the Rings

When the paint or pictures on the back of the gemstones are dry you can attach them to the rings. Simply place a sticker on the ring's round plate. Set the gemstone in place on top. Pull off the other side of the release paper.