

DataON MUST Installation Guide

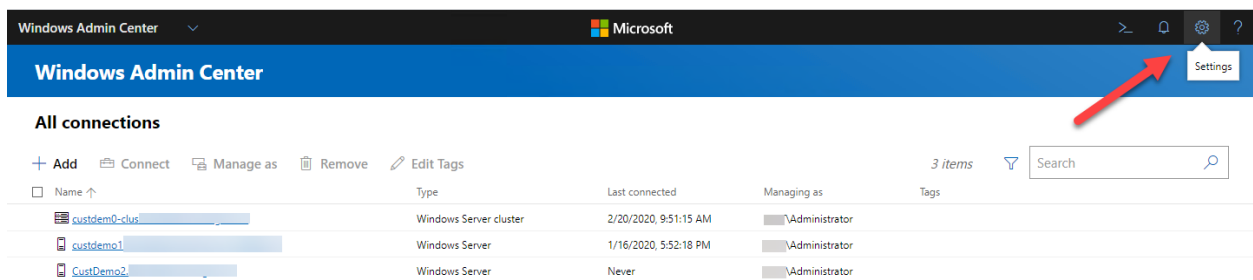
This guide provides step-by-step instructions on setting up the DataON MUST extension for Windows Admin Center.

Pre-requisites

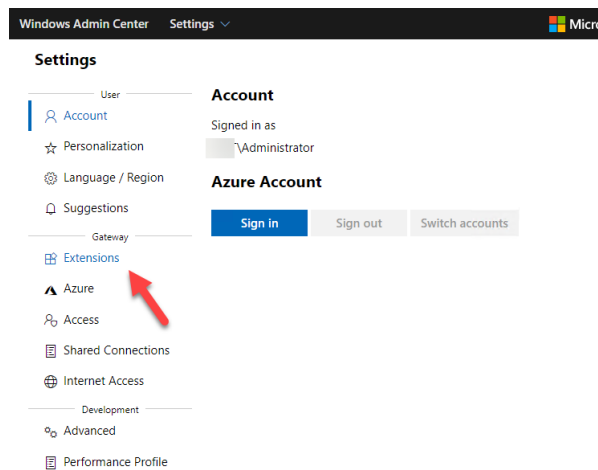
[Download](#) the latest version of Windows Admin Center.

DataON MUST Extension Setup

1. From Windows Admin Center, click on the gear icon to get to the **Settings** page.



2. Click on **Extensions**.



3. Click on **Feeds**, then **+Add** to add a new feed path.
4. Select **DataON MUST** and **Install**.

User

- Account
- Personalization
- Language / Region
- Suggestions

Gateway

- Extensions
- Azure
- Access
- Shared Connections
- Internet Access
- Development
- Advanced
- Performance Profile

Extensions

We might have to restart the Windows Admin Center gateway after installing an extension, temporarily affecting

Available extensions Installed extensions Feeds

Install

Name	Version	Created by	Pack
Active Directory (Preview)	0.63.0	Microsoft	Win
Azure Cloud Shell (Preview)	1.10.0	Microsoft	Win
Azure Extended Network (Preview)	0.24.1	Microsoft	Win
Azure Security Center	1.0.34	Microsoft	Pre-
BitOps Changes	2.0.23	BitOps	Win
Cluster Creation (Preview)	1.2.0	Microsoft	Win
Configuration Manager Client (Previe...	1.1.1	Ken Wygant (Microsoft PFE)	Win
Containers	1.33.0	Microsoft	Win
DataON MUST Visibility, Monitoring, ...	3.0.1	DataON	Win

Details - DataON MUST Visibility, Monitoring, and Management Tool

Description

DataON MUST is a hybrid-cloud infrastructure monitoring and management tool. Designed to seamlessly integrate through a single pane of glass that consolidates all aspects of local, remote server, cluster and Azure Stack HCI

MUST 3.0 Product Highlights:

5. Once the extension is installed, go into your HCI cluster.

Windows Admin Center

Windows Admin Center

All connections

+ Add Connect Manage as Remove Edit Tags

Name	Type	Last connected
custdemo2-clus	Windows Server cluster	2/20/2020, 9:51:15 AM
custdemo1	Windows Server	1/16/2020, 5:52:18 PM
CustDemo2	Windows Server	Never

6. On the left side you will see the DataON MUST extension listed.

- Dashboard
- Compute
 - Virtual machines
 - Servers
- Storage
 - Volumes
 - Drives
- Networking
 - Virtual switches
- Tools
 - Azure Monitor
 - Updates
 - Diagnostics
 - Performance Monitor
- Extension
 - DataON MUST**

There are no alerts

Servers (Total 2)

All servers healthy

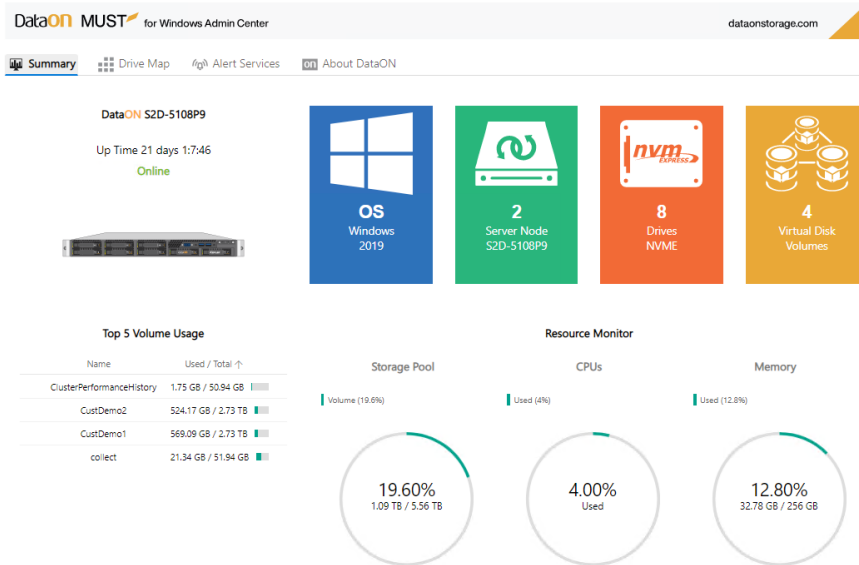
Virtual machines (Total 34)

Running: 2 Off: 32

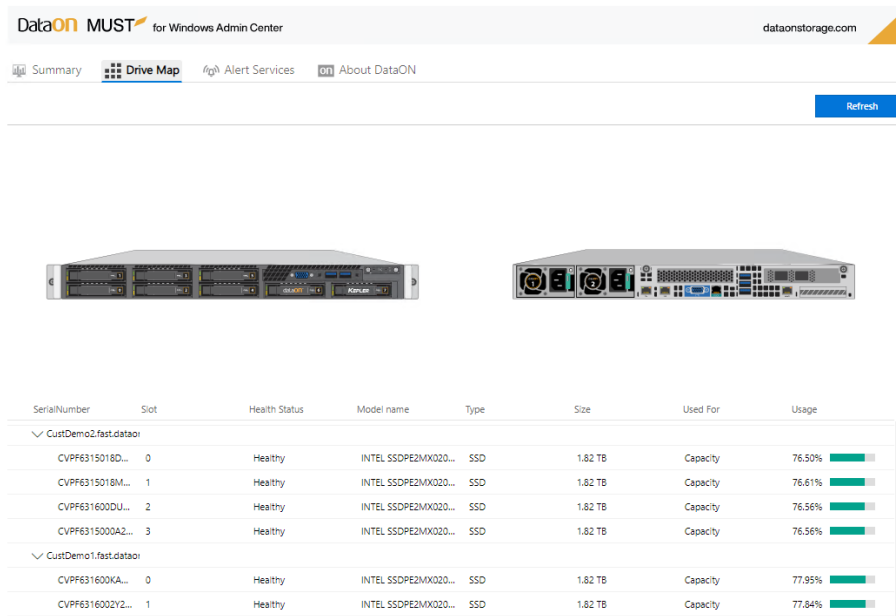
CPU usage

Total: 4.5%

7. The first page you will see is the **Summary** of your system.



8. In the **Drive Map** page, MUST will scan your cluster and display high-level information about your drives.



9. When you select one of the drives in the list (such as #1), it will highlight the drive (shown in the red box).

SerialNumber	Slot	Health Status	Model name	Type	Size	Used For	Usage
CustDemo2							
CVPF6315018D...	0	Healthy	INTEL SSDPE2MX020...	SSD	1.82 TB	Capacity	76.50%
CVPF6315018M...	1	Healthy	INTEL SSDPE2MX020...	SSD	1.82 TB	Capacity	76.61%
CVPF631600DU...	2	Healthy	INTEL SSDPE2MX020...	SSD	1.82 TB	Capacity	76.56%
CVPF6315000A2...	3	Healthy	INTEL SSDPE2MX020...	SSD	1.82 TB	Capacity	76.56%
CustDemo1							
CVPF631600KA...	0	Healthy	INTEL SSDPE2MX020...	SSD	1.82 TB	Capacity	77.95%

10. Select the **Alert Services** tab. Register with DataON and an activation code will be sent to you.

Register

Name * Required

Company Name * Required

E-mail * Required

Phone number * Required

[Request an activation code](#)

[I already have an activation code](#)

11. Input the activation code and then click **Continue**.

Summary Drive Map **Alert Services** About DataON

Enter your activation code

____ - ____ - ____

CONTINUE

12. You will see **Activation Complete**. Click **Continue** to install MUST services and configure alert services.

Summary Drive Map **Alert Services** About DataON

Activation Complete

Click Continue to install MUST service and config alert service

CONTINUE

13. In the **Alert Setup** page, you will see two sections. In section 1, enter your outbound mail (SMTP) server information (ex., smtp.office365.com with port 587 (TLS) using ID/PW allowed to send e-mails). Uncheck the **SMTP Auth Required** if your internal SMTP mail server does not require authentication. Click **Test** to generate a test e-mail. Click **Submit** to save the information.

Alert Setup

Restart Service Exit

SMTP Setup

SMTP Server * Required

SMTP Port * Required

Email * Required

Password * Required

SMTP Auth Required

Submit Test

14. In section 2, add users who will be the recipients of the alert e-mails.

Alert Email Setup

Email * Required

First Name * Required

Last Name * Required

Critical
 Warning
 Info

Email	First Name	Last Name	Alert Rule	Action
No records found				

15. Click **Exit** to leave the settings page. You will be presented with the **Alerts** page.

Summary | Drive Map | **Alert Services** | Call Home Service | About DataON

[Setting](#)

2
Critical Alerts

0
Warnings

0
Status Update

Alert by Category

Enclosures 0	Network Adapters / Interfaces 0	Volume Capacity 0	Storage QoS 0
Pool Capacity 0	Physical Disks 0	Servers 0	Fault Domain 0
Clusters 0	Virtual Disks 0	Other 2	

Active Alerts

Severity	Category	Description	Location	Recommended Action	Time
Critical	Other	The virtual machine 61A64F87-0D92-4F5D-A361-91B816C9...		Troubleshoot the virtual machine.	2/3/2020 7:48:10 AM
Critical	Other	The virtual machine 61A64F87-0D92-4F5D-A361-91B816C9...		Troubleshoot the virtual machine.	2/3/2020 7:48:10 AM

16. Selecting the **Call Home Service** page will present you with an optional service to have physical disk-related alerts sent to DataON support automatically. Click the button to let DataON know you're interested in this service.

Summary | Drive Map | Alert Services | **Call Home Service** | About DataON

Call Home Service

Integration with Health Service Faults and Azure Monitor

Disabled

Understanding MUST Call Home Service

When Disk Failure Occurs

DataON
A Hybrid Cloud Computing Company

DataON's Call Home Service is a new MUST management feature, which integrates Health Service API and Azure Monitor to provide real-time monitoring of DataON Azure Stack HCI solutions for disk failure. If there is a disk failure, DataON will be notified and a disk replacement will be sent out immediately. Please contact sales@dataonstorage.com to learn more.

About DataON

DataON is a hybrid cloud computing company focused on delivering Microsoft Azure Stack HCI solutions, on-premises storage systems, intelligent edge appliances, and cloud-based Microsoft Azure Services. Our company is helping enterprises and customers who have made the “Microsoft choice” to modernize their IT with Microsoft applications, virtualization, and data protection through a complete and turnkey experience. With over 650 HCI clusters and 150PB of storage deployed, DataON enterprise-level solutions are designed to provide the highest level of performance, manageability, and security offered. DataON is a Microsoft Gold Partner, Microsoft Cloud Service Provider (CSP), and an Intel Platinum Partner.

www.dataonstorage.com | 1-888-725-8588 | sales@dataonstorage.com