

SleepSat Driver installation Instructions for Win 7, 8, 10.

(See appendix for screenshots)

- 1) Download the sleepsat-drivers.zip file.
 - If you don't see it, hit [CTRL + J] to find it in your list of recent downloads.
- 2) Open the folder and double click on the subfolder for your operating system (ex. "windows-10")
- 3) Double-Click on the "CP210xVCPInstaller_x64" file. (Fig A)
- 4) "Extract All". (Fig B)
- 5) "Extract" to default location. (Fig C)
- 6) Open the extracted folder, and double-click on the "CP210xVCPInstaller_x64" file again to run the installer. (Fig D)
- 7) Follow the driver installation prompts and select "Continue" "Allow" or "Next" to any prompts that appear. (Fig E)
- 8) Using your USB cable, re-insert your oximeter into the USB port to finish the installation.
- 9) If the device is fully charged, the "Waiting for Device" message should disappear when you open the Connection Center App and you should see a countdown begin on your oximeter.

Appendix

Fig A:

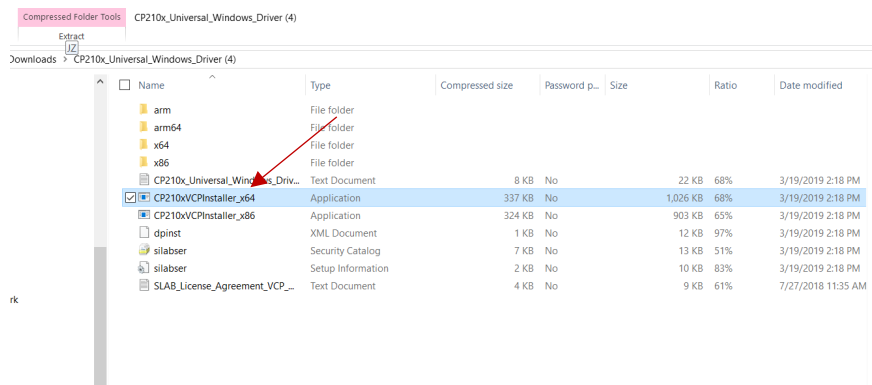


Fig B:

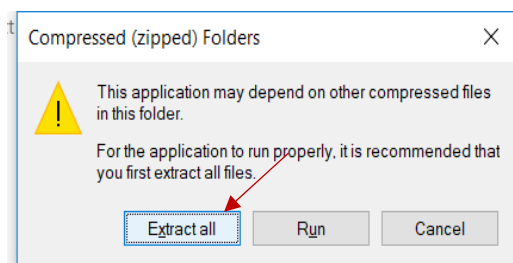


Fig C:

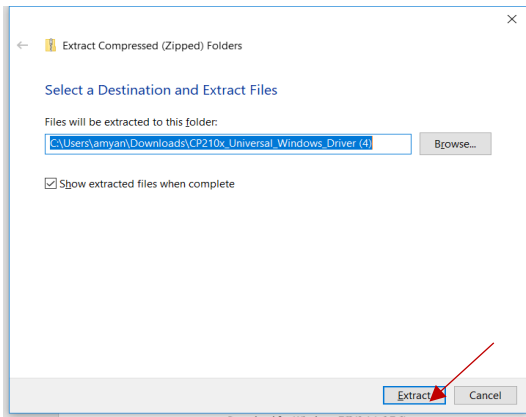


Fig D:

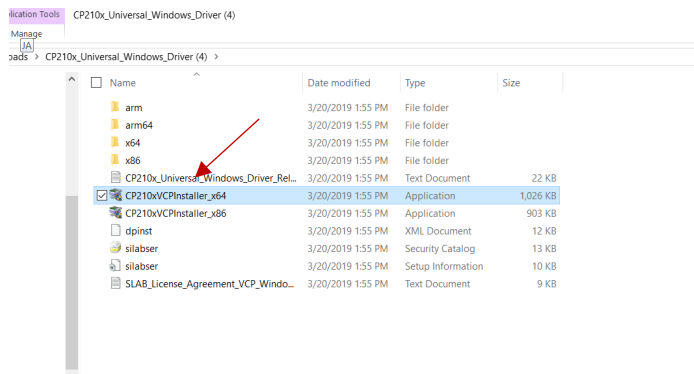


Fig G:

