

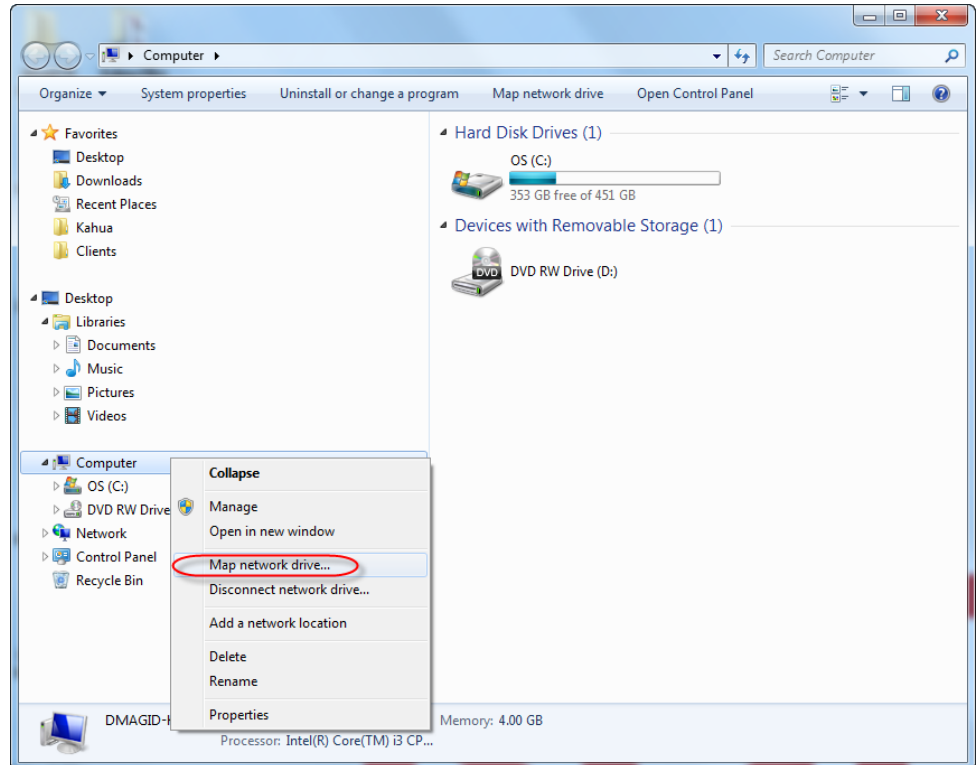
Kahua Windows Extension

Setup Instructions



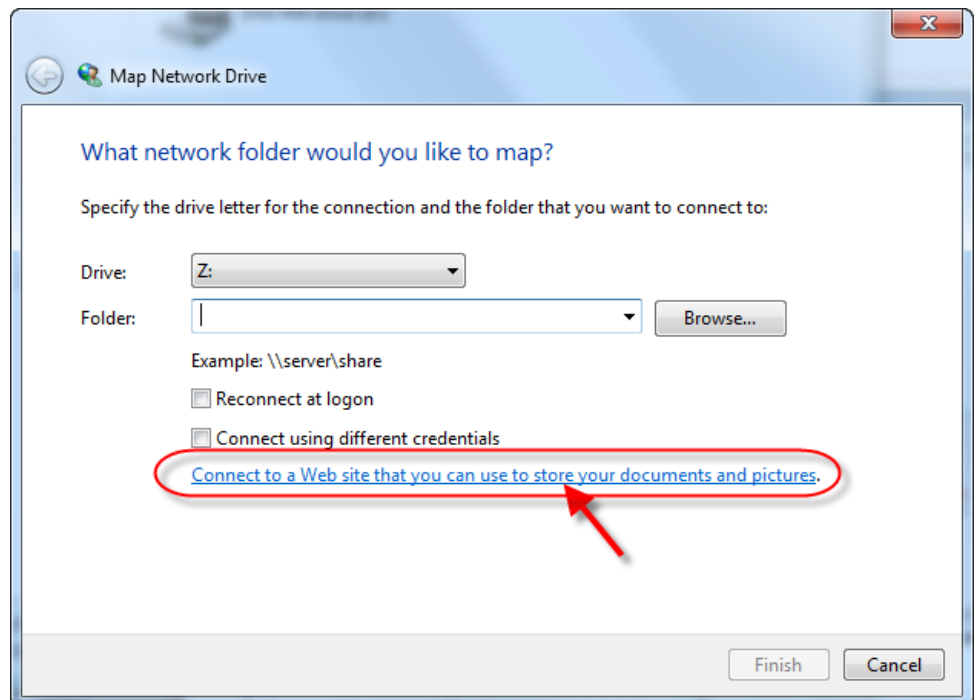
Step 1:

Open Windows Explorer and right click on My Computer. Select the 'Map network drive...' option.



Step 2:

Click the 'Connect to a Web site that you can use to store your documents and pictures.' link.



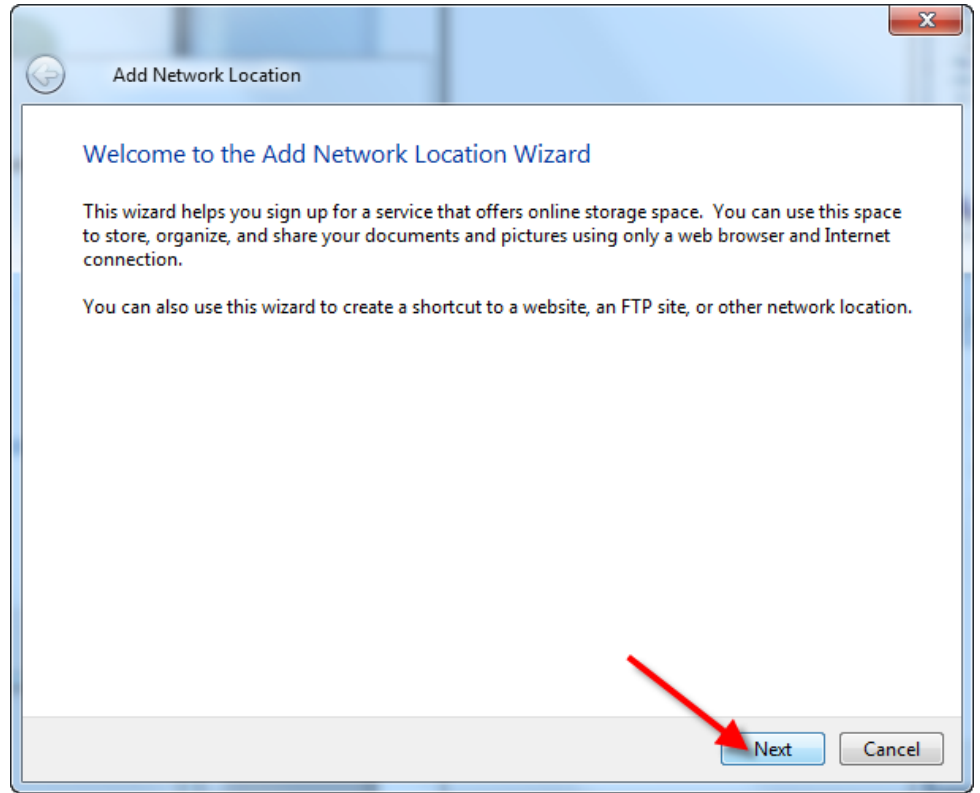
Kahua Windows Extension

Setup Instructions



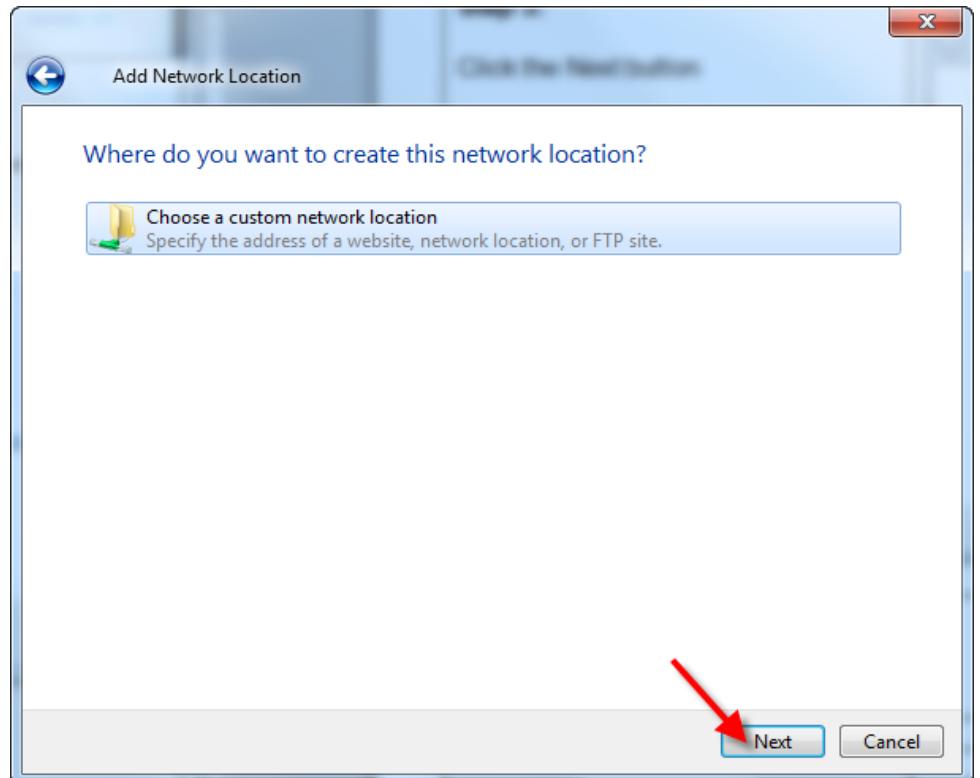
Step 3:

Click the Next button.



Step 4:

Click the Next button.



Kahua Windows Extension

Setup Instructions

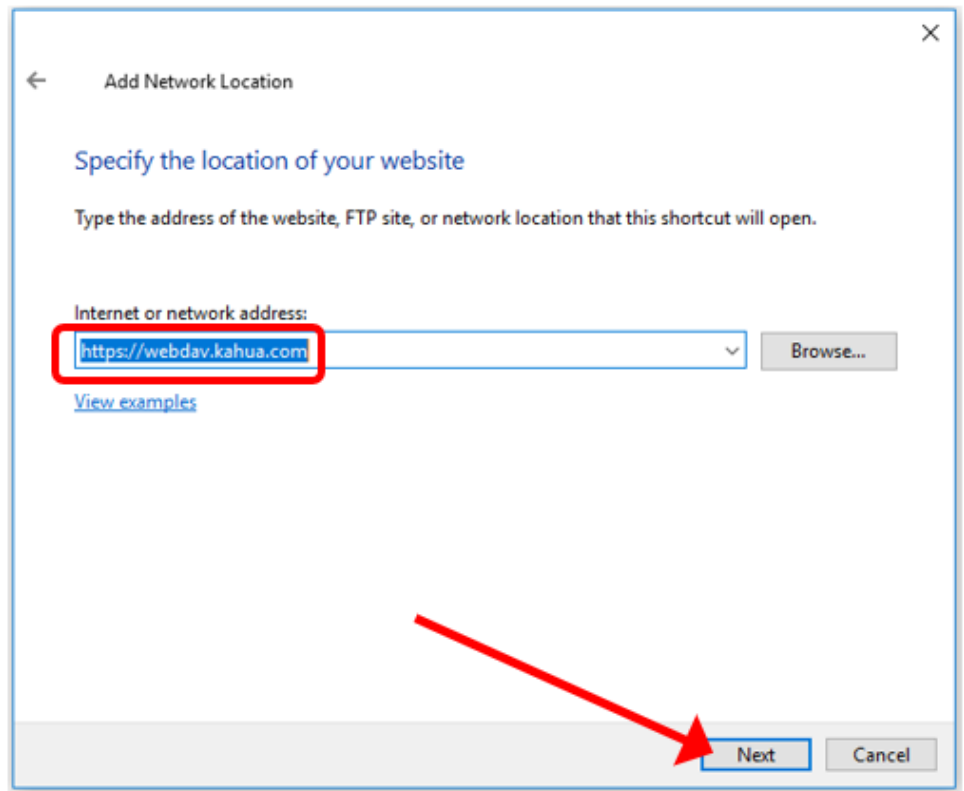


Step 5:

Enter:

<https://webdav.kahua.com>

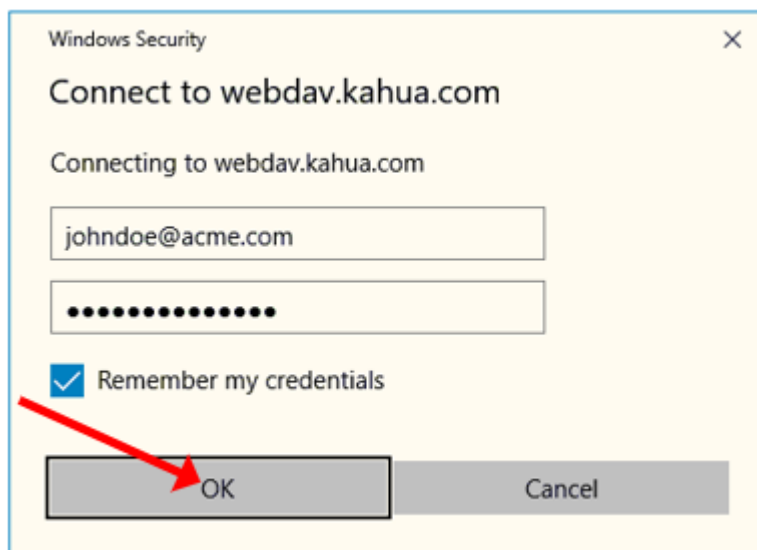
Click the Next button.



Step 6:

Enter your Kahua username and password.

Click the OK button.



Kahua Windows Extension

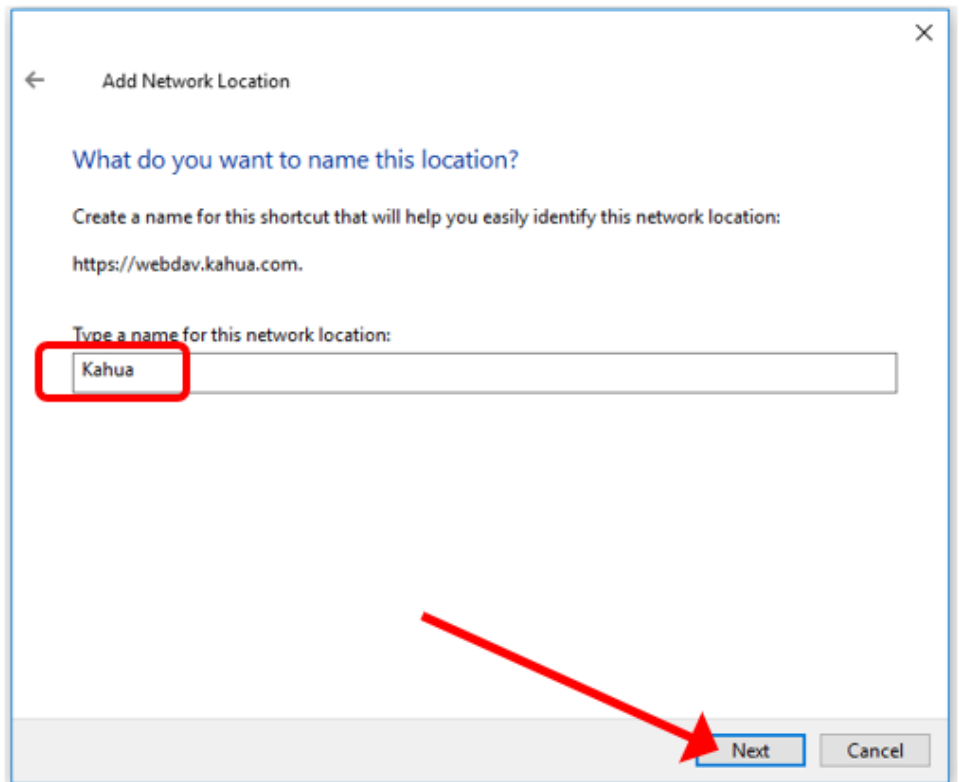
Setup Instructions



Step 7:

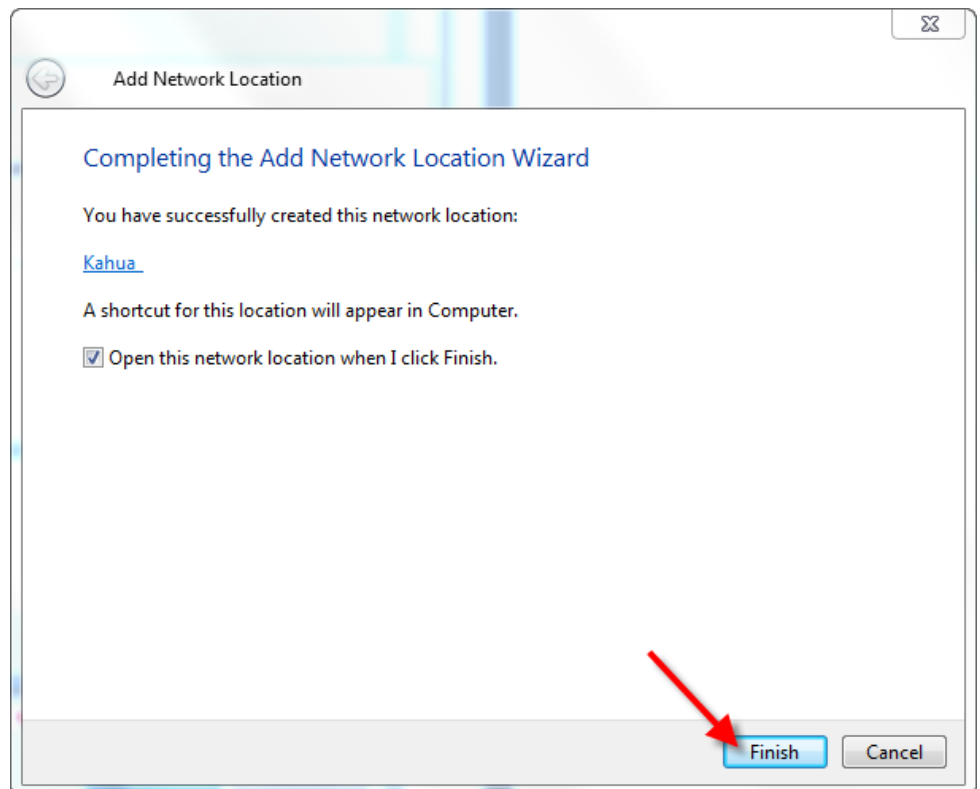
Give the new folder a name.

Click the Next button.



Step 8:

Click the Finish button.



Kahua Windows Extension

Setup Instructions



The Kahua folder will now appear in Windows Explorer.

