

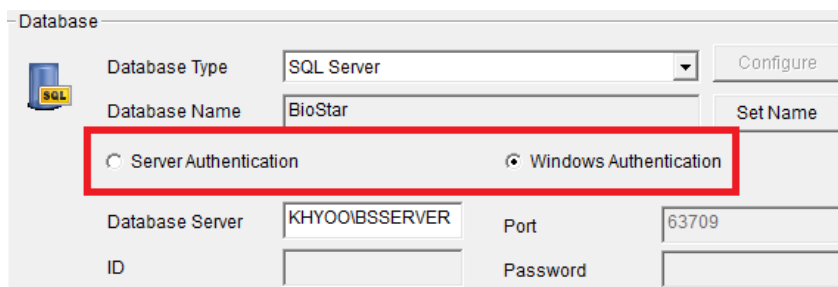
TS0102 – BioStar2 – How to use the DB migration tool

APPLIES TO: MSSQL

This document will guide you through the process of how to use the DB migration tool. This DB migration Tool will be helpful to convert user information of BioStar 1.x to user information of BioStar 2.x. Please read the manual carefully and follow the instructions.

NOTE

- 1) This migration tool will overwrite any user information currently stored in the BioStar 2 database. We highly recommend you to make backup DB if you already have users stored in the BioStar 2.
- 2) This migration tool currently does not support Oracle DB.
- 3) **Department information** will not be converted to BioStar2 database.
- 4) **User ID 1** will be not converted (BioStar2 creates a default administrator ID with **User ID 1**).
- 5) **User access level** will be changed as a **normal user** because of the difference in concept between BioStar1.x and BioStar2.x.
- 6) For the card information, only **Mifare CSN(7byte)** will be converted.
- 7) **Windows Authentication** is not supported. The authentication for **SQL Server** must be done as **SQL Server Authentication**.



The screenshot shows a 'Database' configuration window. It includes a 'Database Type' dropdown set to 'SQL Server', a 'Database Name' field with 'BioStar', and buttons for 'Configure' and 'Set Name'. Below these are two radio button options: 'Server Authentication' (which is selected and highlighted with a red box) and 'Windows Authentication'. At the bottom, there are fields for 'Database Server' (containing 'KHYOOIBSSERVER'), 'Port' (containing '63709'), 'ID', and 'Password'.

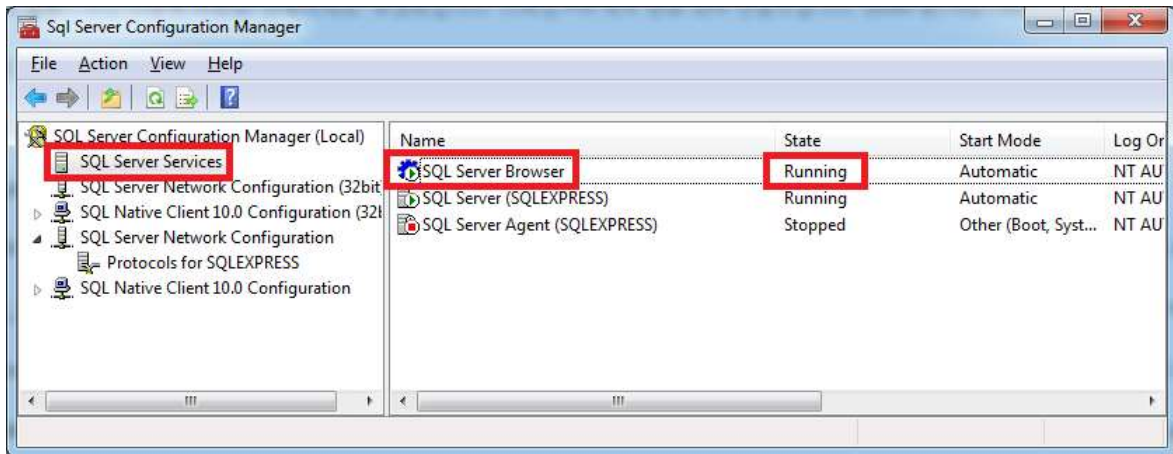
- If you need to set SQL server authentication, please refer the following link;
<https://www.supremainc.com/en/node/618>

2015 Suprema, Inc. All right reserved.

This document should be used only for guidance and does not guarantee resolve the issue. Contact us for further information at support@supremainc.com

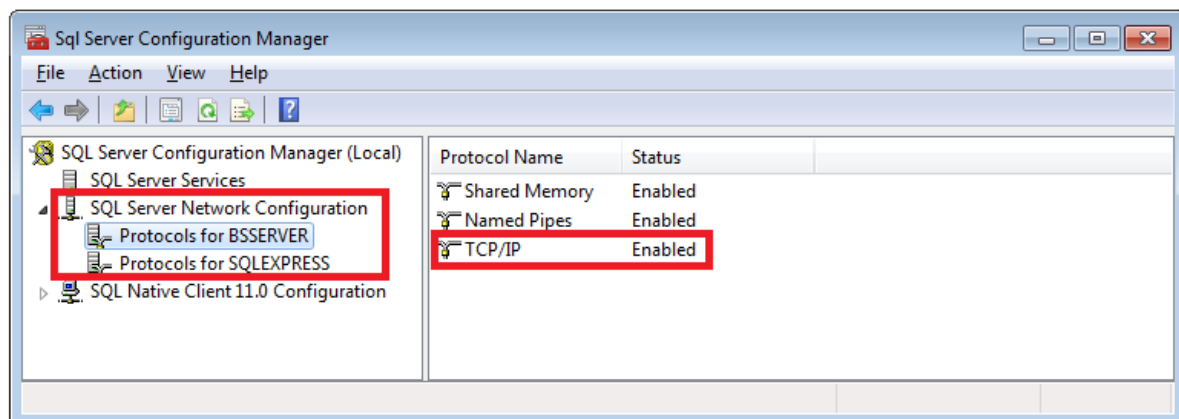
1. Preparations

1) Run the **SQL Server Configuration Manager**. On the left pane, click **SQL Server Services** and check the status of the **SQL Server Browser**. Set it to **“Running”** if it is set to **“Stopped”**.



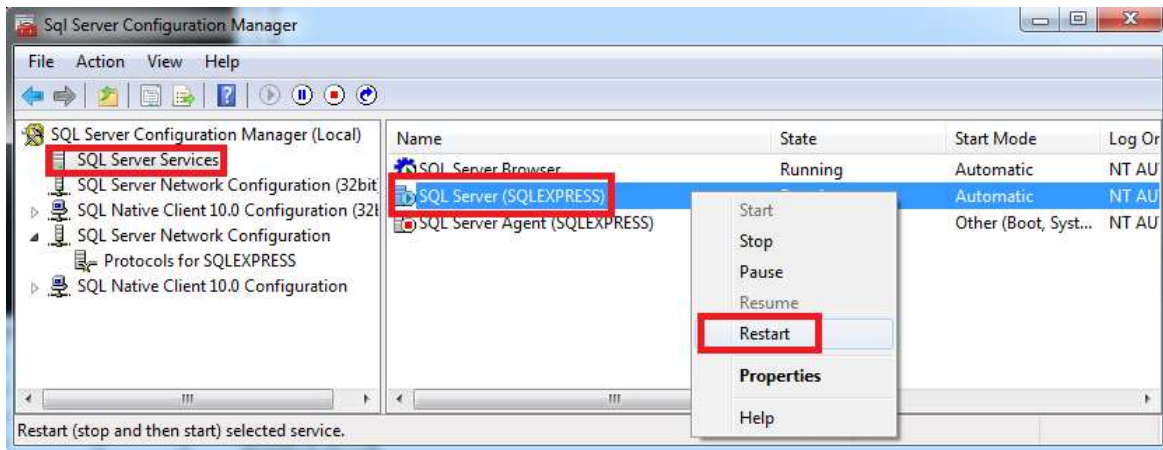
2) On the left pane, click **SQL Server Network Configuration**. There will be 'protocols for SQLEXPRESS' and 'Protocols for BSSERVER' as follows. Then, click the **Protocols for SQLEXPRESS** and check if the TCP/IP is **enabled**.

- The name of protocols depends on your system configuration.



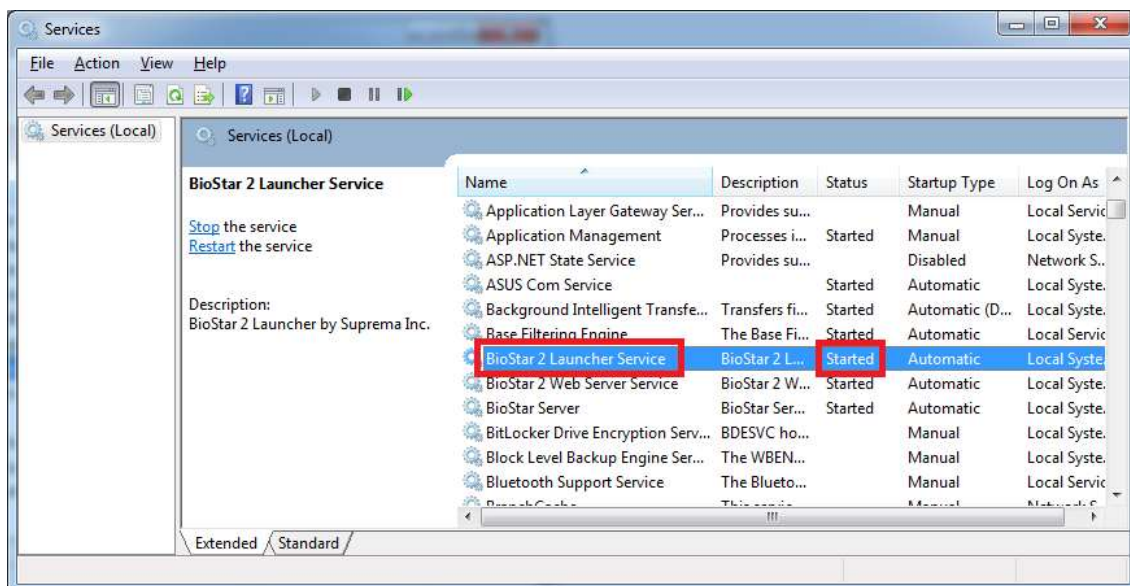
3) If you have changed any of the settings above you will have to restart the **SQL Server**. Click **SQL Server Services** from the left pane, right click **SQL SERVER** and click **Restart**.

BioStar – How to use the DB migration tool



2. Instructions

- 1) Run Services from your Windows control panel (Control Panel > Administrative Tools > Services)
- 2) Search for BioStar 2 Launcher Service



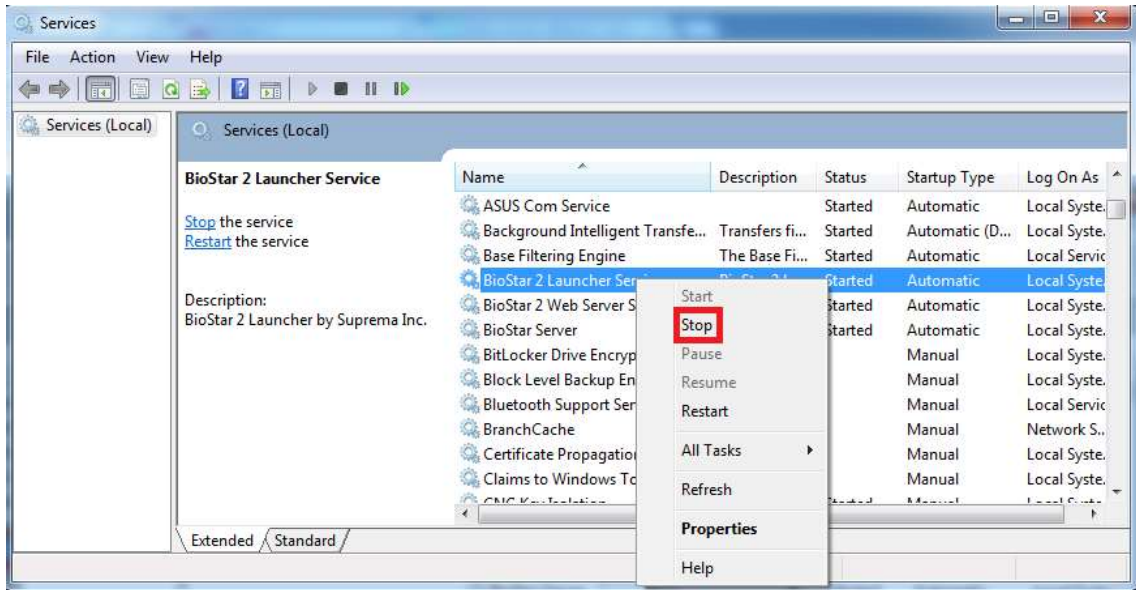
- 3) Right click **BioStar2 Launcher Service** and click **Stop**.

2015 Suprema, Inc. All right reserved.

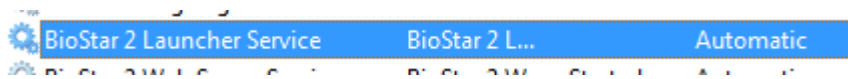
This document should be used only for guidance and does not guarantee resolve the issue.

Contact us for further information at support@supremainc.com

BioStar – How to use the DB migration tool

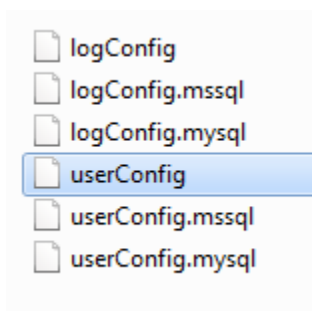
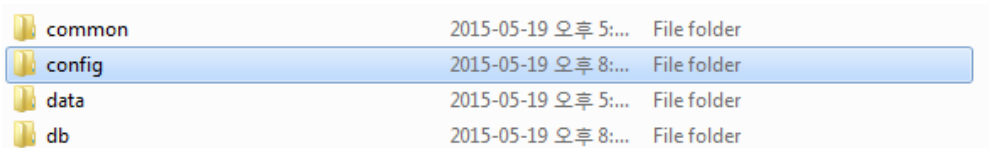


The status would appear as blank.



4) Fill out the DB information in the migration tool configuration file. (B2DMW\$config\UserConfig).

- ✓ For MSSQL, please copy [userConfig.mssql] file to [userConfig] file.
- ✓ For MYSQL, please copy [userConfig.mysql] file to [userConfig] file.



5) Edit the **user, password, server, port, database name**.

2015 Suprema, Inc. All right reserved.

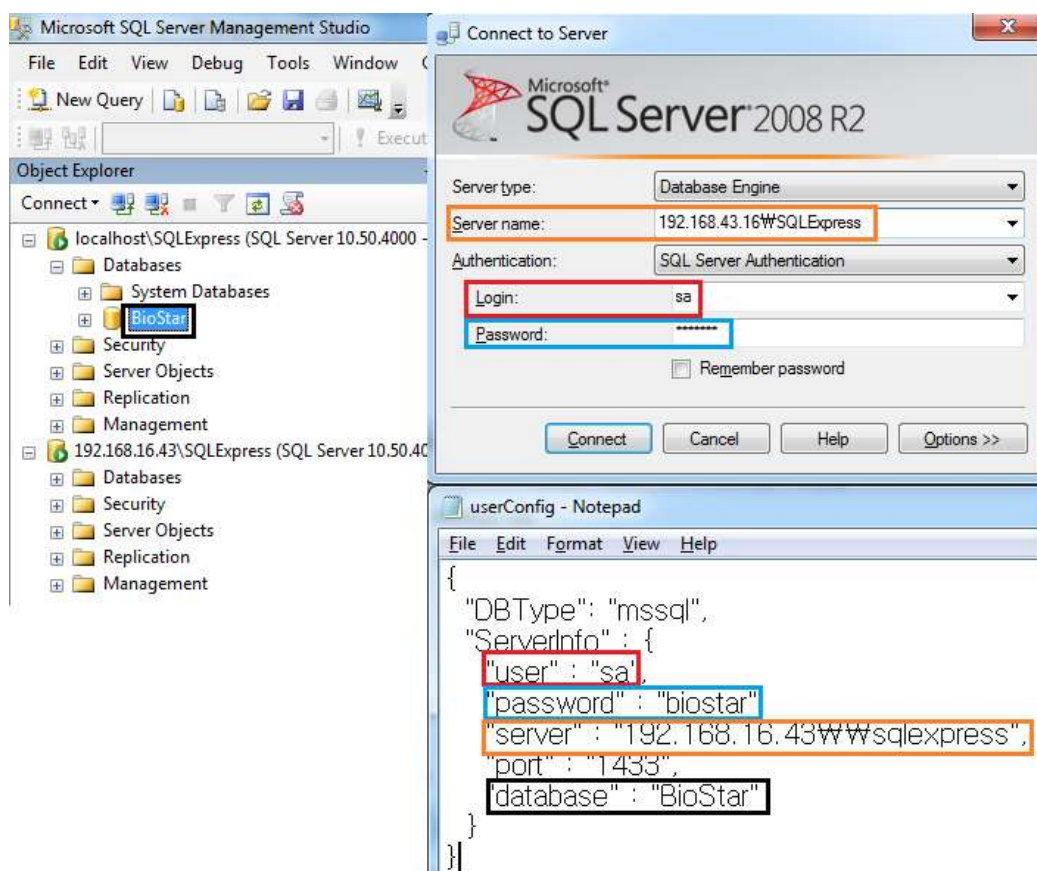
This document should be used only for guidance and does not guarantee resolve the issue.

Contact us for further information at support@supremainc.com

BioStar – How to use the DB migration tool

```
userConfig - Notepad
File Edit Format View Help
{
  "DBType": "mssql",
  "ServerInfo": {
    "user": "sa",
    "password": "biostar",
    "server": "192.168.16.43\\wwwsqlexpress",
    "port": "1433",
    "database": "BioStar"
  }
}
```

6) In case you don't know the information, you may find relevant information if you open Microsoft SQL Server Management Studio Express.

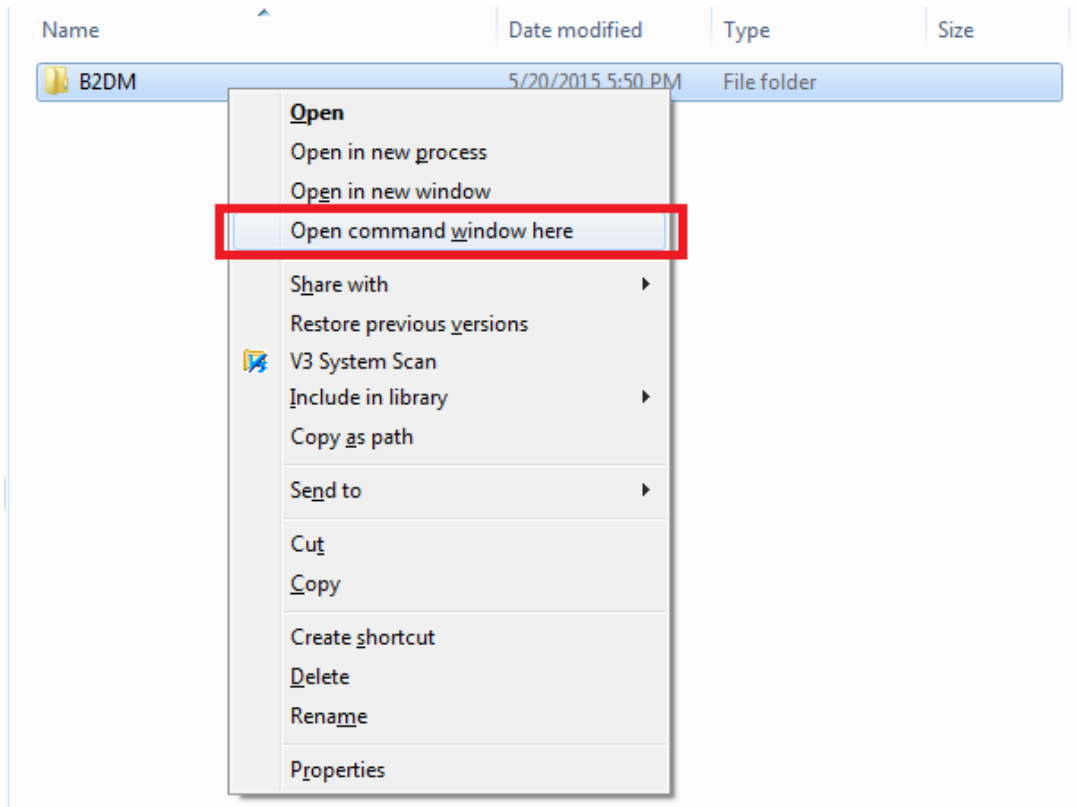


7) Press and hold the **Shift key** and **right click** on the folder that migration has been extracted, click on **Open command window here** to open a new command window with this specific directory.

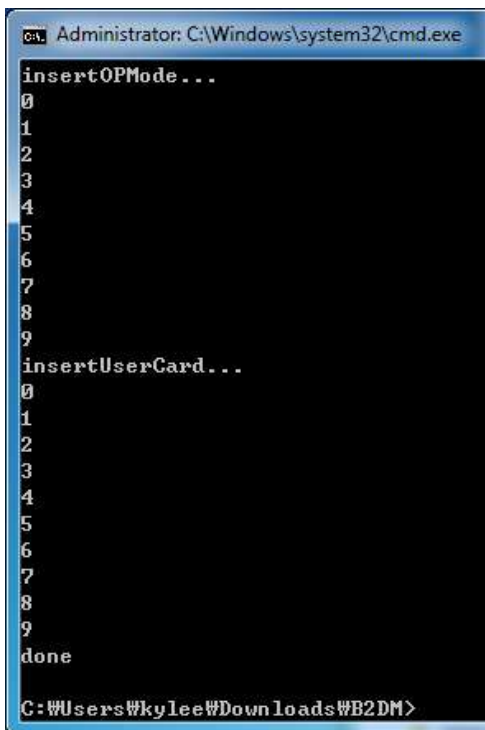
2015 Suprema, Inc. All right reserved.

This document should be used only for guidance and does not guarantee resolve the issue.
Contact us for further information at support@supremainc.com

BioStar – How to use the DB migration tool



8) To start the migration, type **run_user.bat** and press **Enter**.



```
Administrator: C:\Windows\system32\cmd.exe
insertOPMode...
0
1
2
3
4
5
6
7
8
9
insertUserCard...
0
1
2
3
4
5
6
7
8
9
done
C:\Users\kylee\Downloads\B2DM>
```

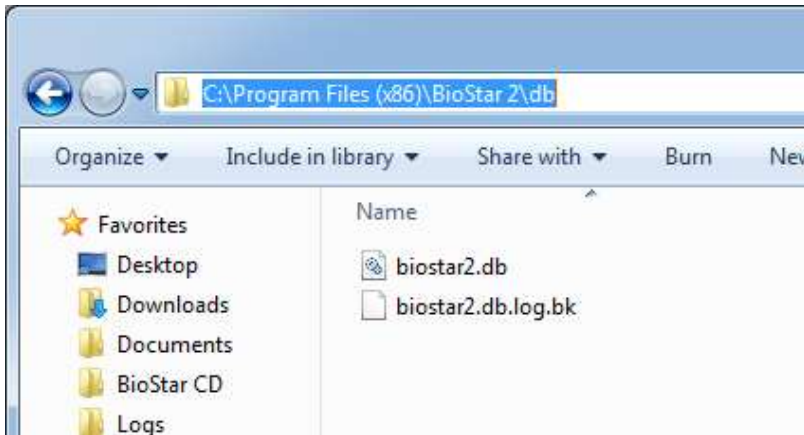
2015 Suprema, Inc. All right reserved.

This document should be used only for guidance and does not guarantee resolve the issue.

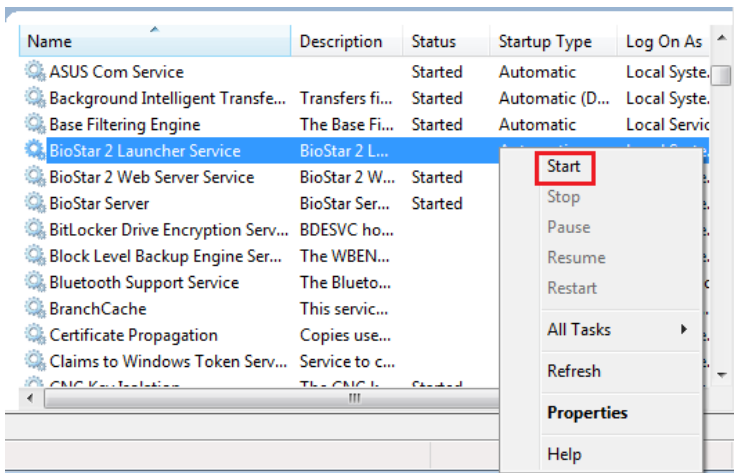
Contact us for further information at support@supremainc.com

BioStar – How to use the DB migration tool

9) Copy **biostar2.db** from [B2DM\Wdb] folder and paste it to [C:\Program Files (x86)\BioStar 2\Wdb] folder.



10) Start the BioStar 2 Launcher Service from Services.



11) Run BioStar2 and check the user list.