

# TEMP – IP68

## Measure temperatures.



### ALERT

- Provide warnings should thresholds be exceeded



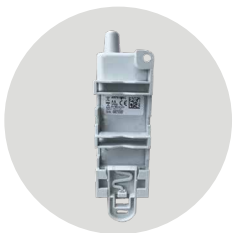
### MONITOR

- Monitor temperature changes



### MEASURE

- Measure temperatures
- Identify temperature losses



## BENEFITS

- Integrated and remote temperature probes.
- Locally and remotely configurable
- Battery-powered stand-alone product
- Data logging for optimal autonomy
- Redundancy for better service continuity
- KARE+ compatible



# PRODUCT USES

---



Implant temperature sensors in the road to optimize the triggering of winter service operations (salting, snow removal).



Getting and raising the outside and inside temperature of a building to regulate heating.

## TECHNICAL SPECIFICATIONS

---

- T° range internal probe: -30 + 70°C
  - T° range remote probe: Sensor: -55 + 155°C / Wire: -30 + 105°C
- Periodic mode with or without history
  - Alarm on exceeding threshold
    - Data redundancy
    - Replaceable battery
  - Dimensions: 132 x 62 x 34 mm
    - Weight: 148 g
    - Casing: IP678

- Operating Temperature Range: -25 + 70°C
  - Configurable Life Screen
- Integrated fastening system: DIN rail, tube, wall, flange
- Zone: Sigfox: RC1 / LoRaWAN: EU863-870 / LoraWAN Class C
  - Standards: Directive 2014/53/EU (RED)
- Product error alert, configuration error, low battery

