

NETOP™

# RemoteControl

Secure Remote Management and Support

Using NowUtil



Netop develops and sells software solutions that enable swift, secure and seamless transfer of video, screens, sounds and data between two or more computers over the Internet. For more information, see [www.netop.com](http://www.netop.com).

# Table of Contents

- 1. What is NowUtil? ..... 2
  - Usage..... 2
  - Target specifiers..... 2
  - Command line options..... 2
  - Host specific command line options ..... 3
    - Remote Control Permissions ..... 5
- 2. How to test..... 6

## 1. What is NowUtil?

Nowutil is a program which allows you to send command line options to the Guest and the Host. Nowutil.exe is automatically installed with Netop Remote Control 12.21 and is located in the Guest and Host installation folders.

### Usage

```
nowutil [{target specifier}] [{command line option}] /<{command line option}>
```

**NOTE:** You can specify multiple command line options within a command.

### Target specifiers

- /G Sends commands to the Guest.
- /H Sends commands to the Host.

### Command line options

The following command line options can be sent to both Guest and Host:

Parameter	Function
/?	NowUtil help information, providing description of all command line options.
/K	Closes the application (Guest, Host) forcefully. However, please note that NowUtil will wait until the application stops.
/M:[Serial Number];[License Number]	With the provided serial number and license number, the command generates (or overwrites if existing) the <b>nprgutil.cpl</b> license file located in the application installation folder.
/P /[install path] /[Serial Number] /[/License]	Updates the application license found at the install path provided with the specified license details. The command options are mandatory. If missing or invalid options, the command will fail.
/S	Brings the application (Guest, Host) window to foreground.
/Y	Starts the NetOp service. This command also works without providing the target specifier.
/Z	Stops the NetOp service. This command also works without providing the target specifier.

## Host specific command line options

**Usage:** nowutil /h /command line option}

This section describes the command line options that can be send only to the Host:

Parameter	Function
/R:R	Initiates a help request from the Host.
/R:C	Cancels the help request from the Host.
/resetperm /mpass:[Maintenance password]	<p>Resets permissions on the Host to default permissions, the permissions you had initially configured on the connected Host, the ones located on the Host in the .ndb files.</p> <p>Prerequisites for this command to work:</p> <ul style="list-style-type: none"> <li>On the Host machine go to Tools &gt; Maintenance Password, set a maintenance password and select the Guest access security check box.</li> <li>Enter the correct maintenance password in the /mpass: [Maintenance Password] command line option</li> </ul>
/restart /mpass:[Maintenance password]	<p>Restarts the Host.</p> <p>Prerequisites for this command to work:</p> <ul style="list-style-type: none"> <li>On the Host machine go to Tools &gt; Maintenance Password, set a maintenance password and select the Unload and Stop check box.</li> <li>Enter the correct maintenance password in the /mpass: [Maintenance Password] command line option</li> </ul> <p>If user interaction is needed (e.g.: "are you sure you want to restart, because..."), the command will fail.</p>
/restart:force /mpass:[Maintenance password]	<p>Restart the Host forcefully. The command will bypass any user interaction.</p> <p>Prerequisites for this command to work:</p> <ul style="list-style-type: none"> <li>On the Host machine go to Tools &gt; Maintenance Password, set a maintenance password and select the Unload and Stop check box.</li> <li>Enter the correct maintenance password in the /mpass: [Maintenance Password] command line option.</li> </ul>
/setperm:[permission]=on   off /mpass:[Maintenance password]	<p>Sets the permissions for existing connections to the host. To see the list of permissions and associated codes, click <a href="#">here</a>.</p> <p>The permissions can be enabled or disabled by using <b>on</b> or <b>off</b>.</p> <p>The /setperm parameter can be used multiple times in order to</p>

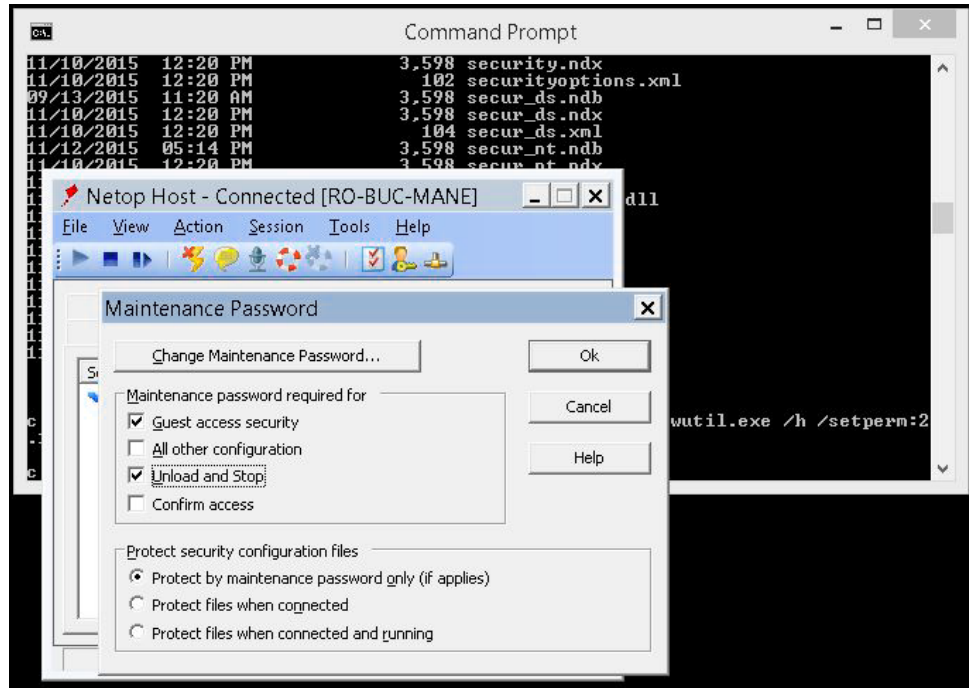
Parameter	Function
	<p>define more permissions in the same command line.</p> <p>Here is an example</p> <pre><i>"C:\Program Files (x86)\Netop\Netop Remote Control\Host\nowutil.exe" /h /setperm:2.1.2=off /setperm:2.1.3=off /mpass:a</i></pre> <p>The permissions are changed on-the-fly, no host restart is needed.</p> <p>Prerequisites for this command to work:</p> <ul style="list-style-type: none"> <li>• On the Host machine go to <b>Tools &gt; Maintenance Password</b>, set a maintenance password and select the <b>Guest access security</b> check box.</li> <li>• Enter the correct maintenance password in the <code>/mpass:Maintenance Password]</code> command line option.</li> </ul>
/start	Starts the Host. If user interaction is needed (e.g.: "are you sure you want to start, because..."), the command will fail.
/start:force	Starts the host forcefully, bypassing any user interaction.
/stop /mpass:[Maintenance password]	<p>Stops the Host.</p> <p>Prerequisites for this command to work:</p> <ul style="list-style-type: none"> <li>• On the Host machine go to Tools &gt; Maintenance Password, set a maintenance password and select the Unload and Stop check box.</li> <li>• Enter the correct maintenance password in the <code>/mpass: [Maintenance Password]</code> command line option</li> </ul> <p>If user interaction is needed (e.g.: "are you sure you want to stop, because..."), the command will fail.</p>
/stop:force /mpass:[Maintenance password]	<p>Stops the Host forcefully. The command will bypass any user interaction.</p> <p>Prerequisites for this command to work:</p> <ul style="list-style-type: none"> <li>• On the Host machine go to <b>Tools &gt; Maintenance Password</b>, set a maintenance password and select the <b>Unload and Stop</b> check box.</li> <li>• Enter the correct maintenance password in the <code>/mpass:Maintenance Password]</code> command line option.</li> </ul>

**Remote Control Permissions**

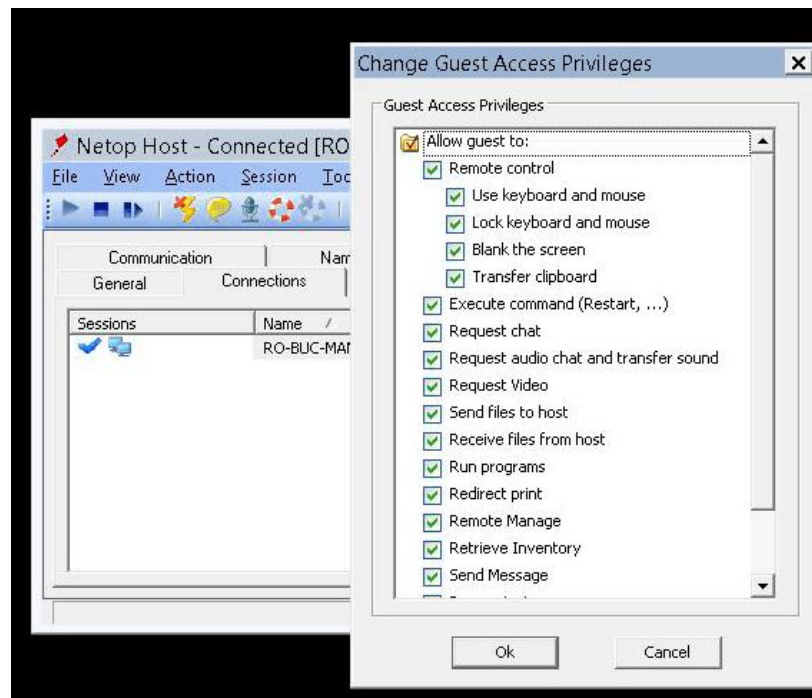
<b>Permission</b>	<b>Code</b>
View remote screen	2.1.1
Use keyboard and mouse	2.1.2
Lock keyboard and mouse	2.1.3
Blank the screen	2.1.4
Transfer clipboard	2.1.5
Execute command	2.1.6
Request chat	2.1.7
Request audio chat and transfer sound	2.1.8
Request video	2.1.9
Send files to host	2.1.10
Receive files from host	2.1.11
Run programs	2.1.12
Redirect print	2.1.13
Remote Manage	2.1.14
Retrieve inventory	2.1.16
Send message	2.1.17
Demonstrate	2.1.18
Join multi Guest session	2.1.19
Act as multi Guest session Administrator	2.1.20
Select remote monitor	2.1.21

## 2. How to test

1. Make sure you have a maintenance password on the Host and that **Guest Access Security** and **Unload and Stop** are checked:



2. Check the existing privileges of the connection by right clicking the connection under the **Connection** tab and clicking **Change Guest Access privileges**:



3. Set new permissions by running the nowutil.exe command as seen in the example below (In this example the maintenance password used is “a”).

```
"C:\Program Files (x86)\Netop\Netop Remote Control\Host\nowutil.exe" /h /setperm:2.1.2=off /setperm:2.1.3=off /mpass:a
```

4. You can see the changed permissions by right clicking the connection under the **Connection** tab and clicking **Change Guest Access privileges**

You can see that the 2 permissions are off:

Use keyboard and mouse	2.1.2
Lock keyboard and mouse	2.1.3

