

GGM KITIP24xx-48xx

How to use RTSP Protocol of your recorder ?



Valid for those references :

- GGM NVRL0104
- GGM NVRL0104P
- GGM NVRL0108P
- GGM NVRE0104P
- GGM NVRE0108P
- GGM KITIP24C5MP
- GGM KITIP48C5MP

1- What is the RTSP Protocol ?

2- How to find RTSP command of your recorder ?

3- How to read RTSP Stream with an application (Example : VLC Media Player)

1- What is the RTSP Protocol ?

RTSP Protocol (Real Time Streaming Protocol) is used to send audio or video live from one device to another.

RTSP Command is a specific address given by your recorder.

Example : `rtsp://192.168.1.1/xxxx/live1`

2- How to find RTSP command of your recorder ?

Go to the Main Menu, then **Setup/Network** then **General** and **RTSP** :



Instruction :

rtsp://(IP):(Port)/A/B

A: 01(ch1), 02(ch2)..

B: 0(Main Stream), 1 (Sub Stream)

Example :

rtsp://192.168.1.212:554/ch01/0 for the Main Stream of the Camera **1**

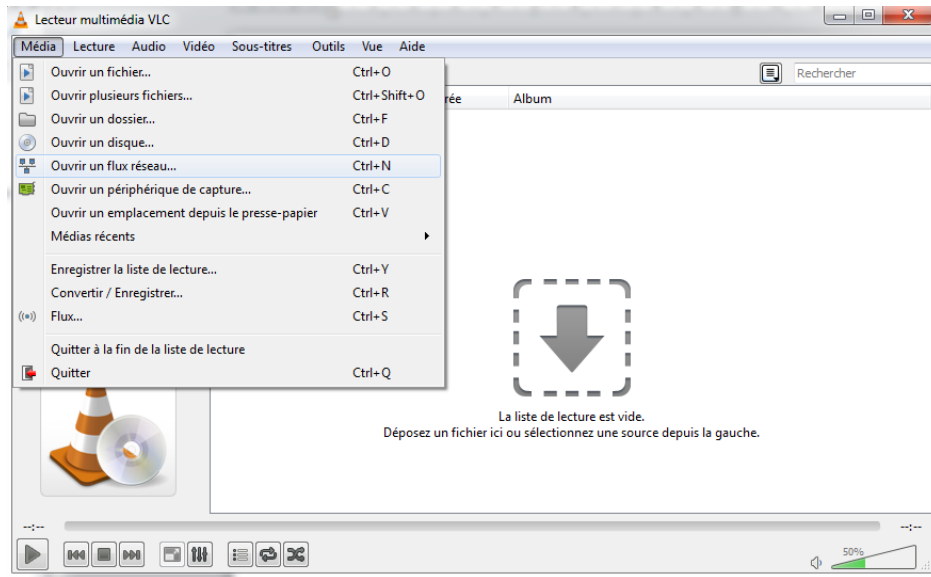
rtsp://192.168.1.212:554/ch02/1 for the Sub Stream of your camera **2**

3- How to read RTSP Stream with an application (Example : VLC Media Player)

Open your specific application to open a Network Stream.

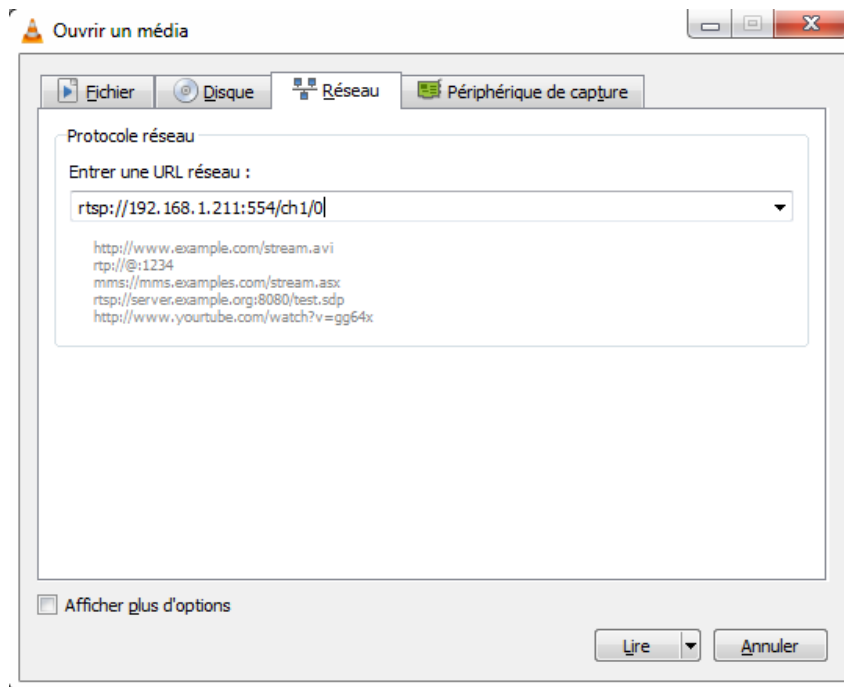
In this case here, we use **VLC Media Player** Program.

Go to **Media / Open a Network Stream ...**



Fill in the RTSP address of your camera :

Example : `rtsp://192.168.1.211:554/ch1/0`



If necessary, you need to be identify

Stream is instantly displayed.