

GGM CCKITAHD

Playback Mode

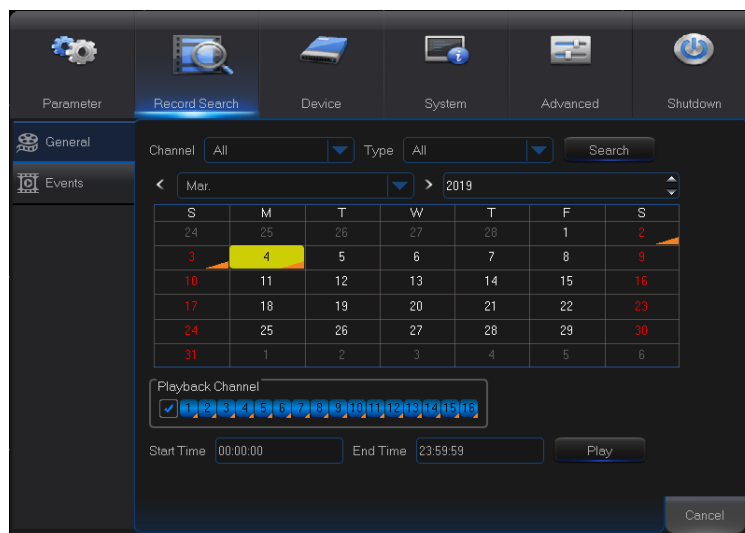


Valid for those references :

- GGM CCKITAHD
- GGM CCKITAHD4
- GGM CCKITAHD8
- GGM CCEL2KITAHD4
- GGM CCKITAHD 1080P
- GGM CCAHDXX
- GGM CCELXX

Where is Playback Mode ?

Go to the Main Menu and then Record Search.



Here, you can select camera and date you want to see.

Then Go to READ



Bar graph appears on the bottom, with RED or green color according the type of recording (Normal or alarm).

For Example : RED means *Motion Detection*

Click on <PLAY/PAUSE>, <NEXT>, <FAST PLAYING>, <SLOW PLAYING> for any operations you want.