

GGM CCKITAHD

Improve Motion Detection for your cameras



Valid for those references :

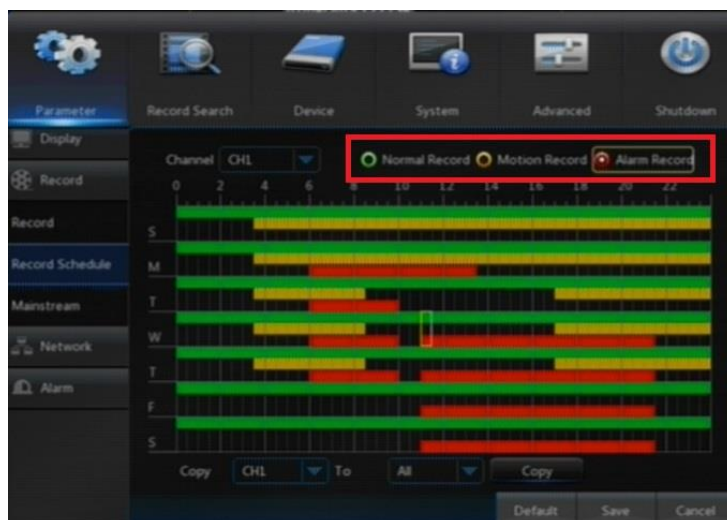
- GGM CCKITAHD
- GGM CCKITAHD4
- GGM CCKITAHD8
- GGM CCEL2KITAHD4
- GGM CCKITAHD 1080P
- GGM CCAHDXX
- GGM CCELXX

Caution : This method is NOT recommended for outdoor cameras.

For any configuration, you need to connect a monitor (HDMI or VGA) directly on the back of your recorder.

Step 1 : Modify The Recording Schedule.

Parameters / Record / Recording Schedule



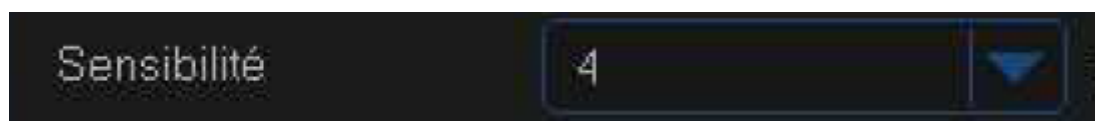
Step 2 : Enable Motion Detection for each camera.

Paramter / Alarm / Motion than Enable



Step 3 : You have the possibility to adjust and accurate the Motion Detection by using 2 parameters : Sensitivity and areas (according your environment and distance between camera and your Trigger)

Sensitivity : Support 1 to 8 levels (8 is the highest Level)



Step 4 : Set the trigger zone (ZONE / CONFIGURATION)



Then, go to **Configuration / Area** and you could Enable or disable some areas of your camera by choosing trigger zone

Red areas are active areas (Motion detection enable)



Left click to **SAVE**

Step 5 : Check your recordings (Plyaback Mode)

On the Graphical Interface (GUI), you could see a pictogram will be materialized by a red dot and a “small men” during a motion detection



In this way, it will be easier to find an event such as a Motion Detection (compared to a continuous recording)

For each Motion detection, a red line will be display.

