

impero education pro

Classlink Integration

Impero Education Pro



Contents

| | |
|---|----|
| Introduction..... | 3 |
| Requirements | 3 |
| Install Impero OneRoster Import Service | 4 |
| Configure SFTP Server | 6 |
| Configure Impero Server for SIS Integration | 7 |
| Classlink Roster Server | 14 |
| Adding the Impero Education Pro Application | 14 |
| Adding the Custom Export application for Multi Server Configurations..... | 15 |
| Sending Classlink Roster Server Data to Impero Education Pro..... | 16 |
| Import Groups on Impero Server | 18 |

Introduction

Impero Education Pro can now integrate with the Classlink Roster Server. This integration allows schools and organisations using Classlink to supply Education Pro with the data required to create groups and add groups members. In addition, it will add all staff users, grant them access to the system and give them access to only the groups assigned to them in the SIS/MIS system.

The following guide is designed to take you through the process of setting up Impero Education Pro to support Classlink Integration.

Requirements

- Impero Education Pro Server running version 7.3.36 or higher
- SFTP Server running on the Impero Education Pro Server
- OneRosterImporter tool for Education Pro provided by Impero
- SIS/MIS system supporting the OneRoster standard
- Classlink Roster Server

Install Impero OneRoster Import Service

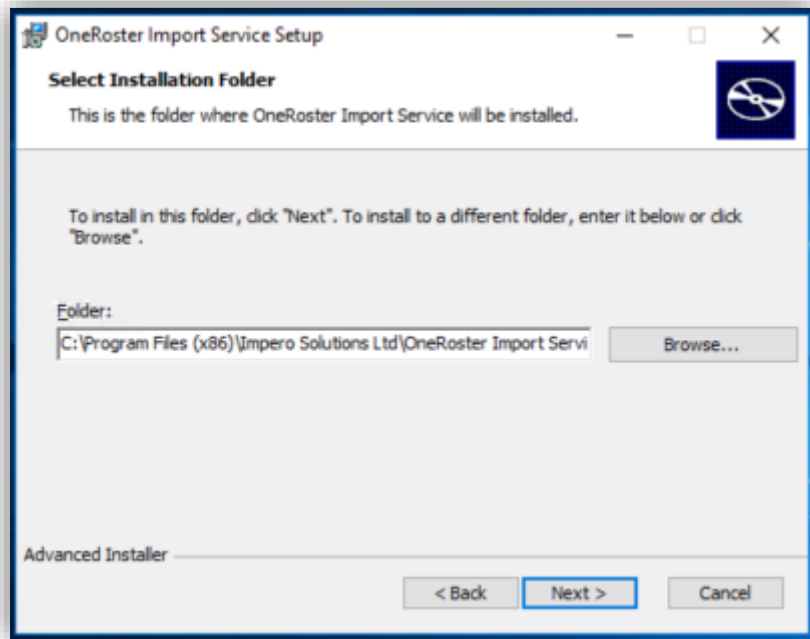
Download the Impero OneRoster Import service setup [here](#)

Run and install the Impero OneRoster Import service on the Impero Server
(Please note Impero Server must be version 7.3 or higher)



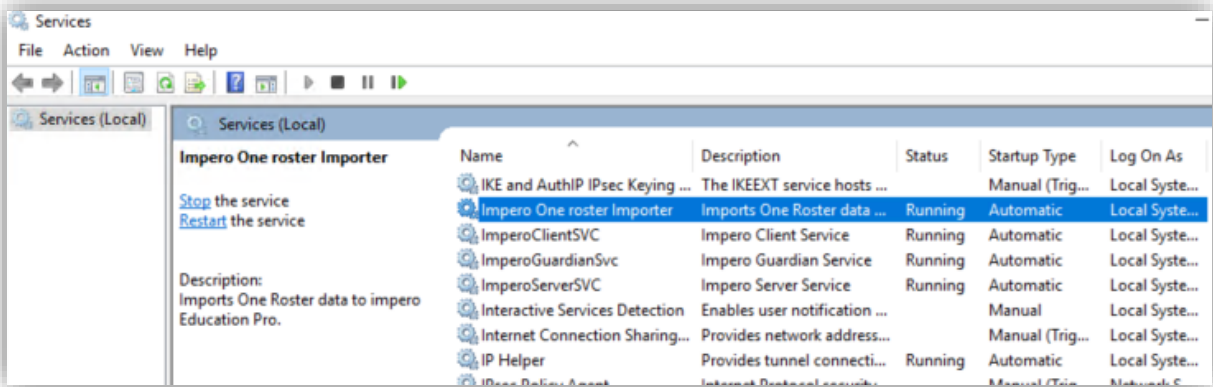
Choose the install location for the OneRoster import service

(Please note this location will contain a config file which can be edited to change the import and output folders)



Once the install is completed you will see a new service running called **Impero One roster Importer**

(Please note this service must be running for Classlink Integration to function)

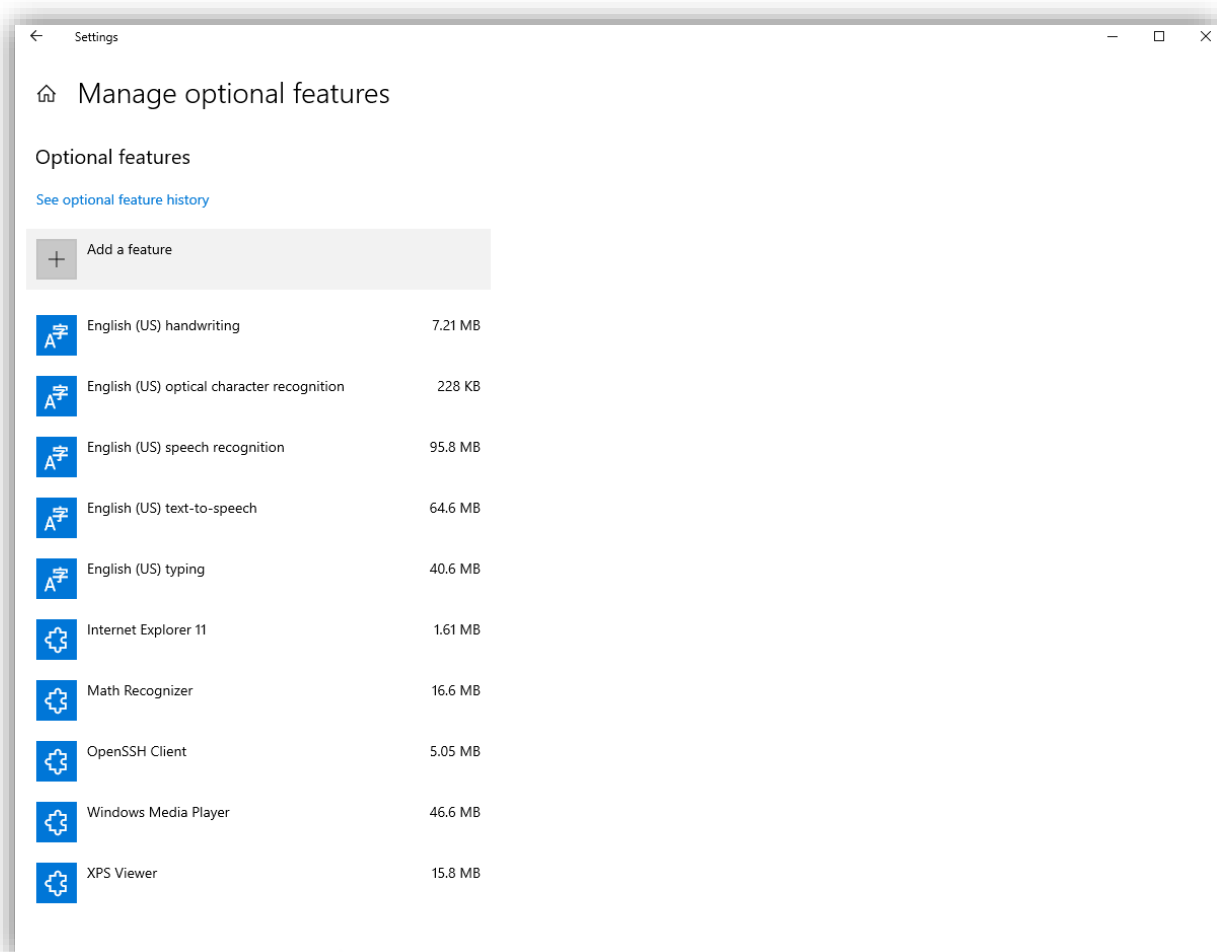


Configure SFTP Server

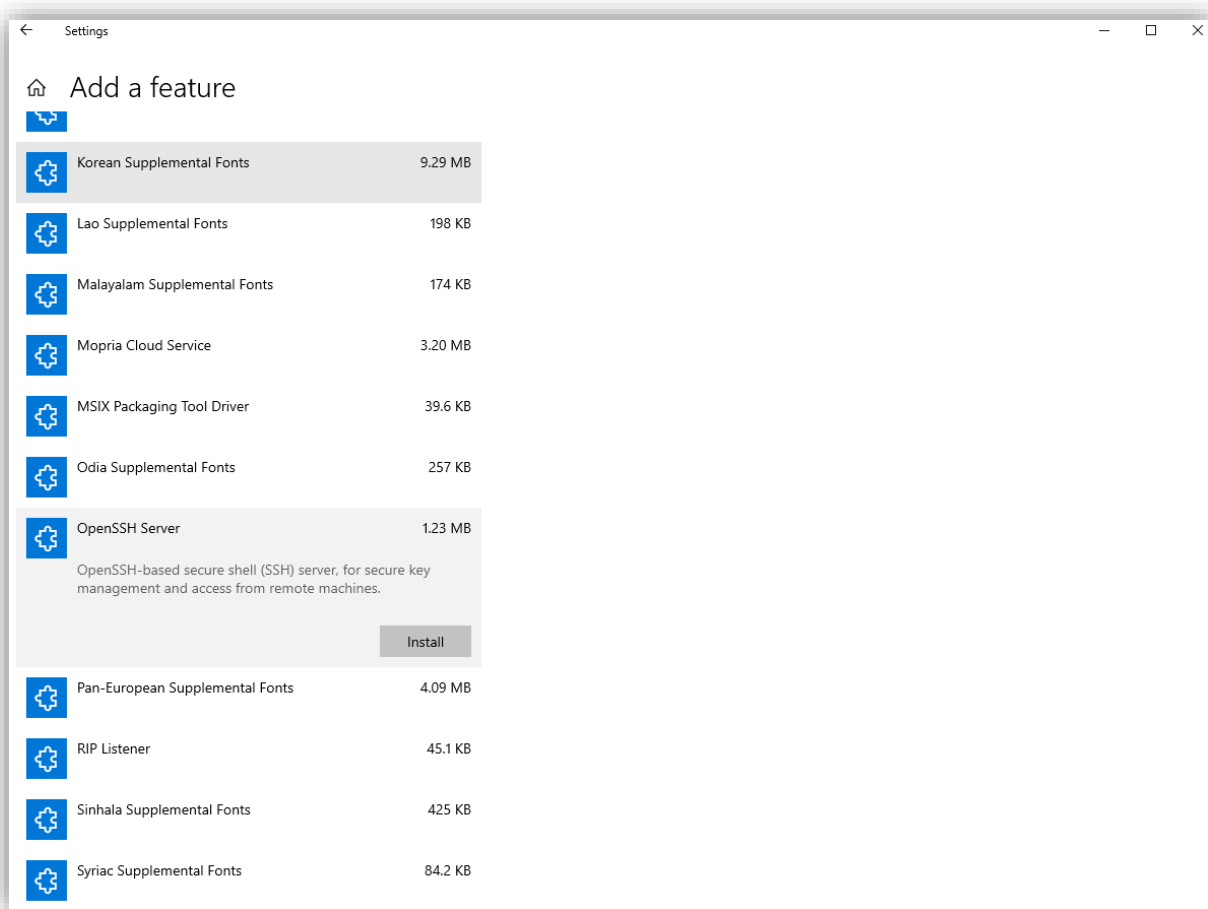
In order to facilitate the data transfer between the Classlink Roster Server and the Impero Education Pro Server, an SFTP Server must be configured on the Impero Server. There are many SFTP server packages available and providing the credentials have been setup correctly it should not matter which SFTP service you decide to use.

For the purpose of this guide we will be using Windows Server 2019 which has OpenSSH Server as a built-in optional feature.

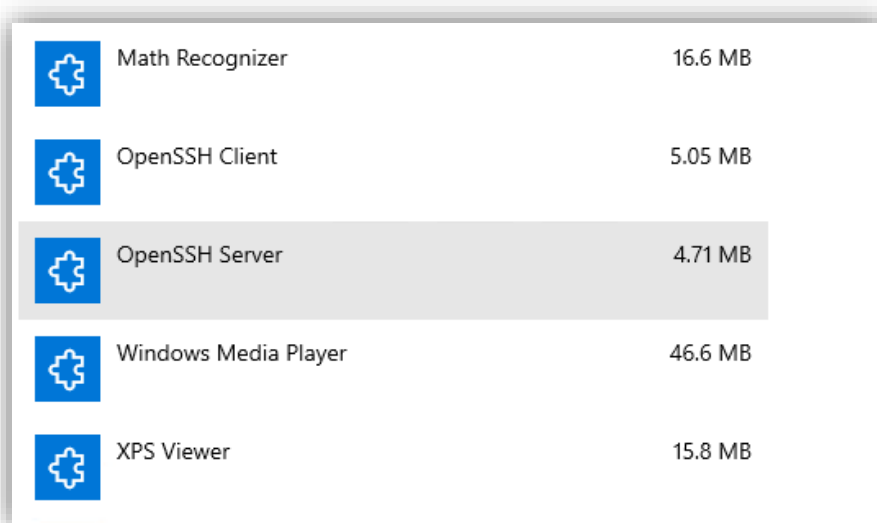
Firstly, you will need to install the OpenSSH Server feature in Windows Server 2019. This can be found under **Settings->Apps->Manage optional features**



Click **Add a feature** and scroll down until you find the feature **OpenSSH Server** and click **Install**.

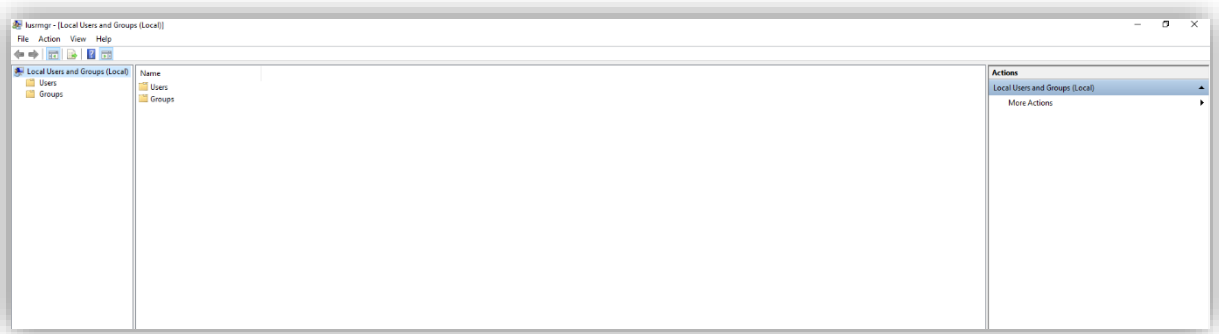


Go back to the previous screen and when OpenSSH Server appears in the list of installed components then you have successfully installed the SFTP server.



Now we need to add a local user account to the Impero Server that will be used by the Classlink Roster Server to push data to us.

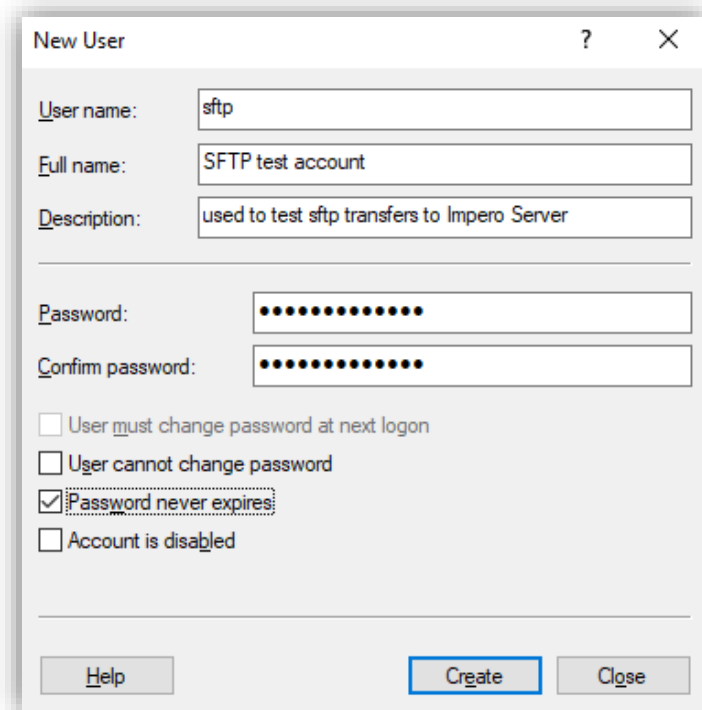
On the Impero Server, open Run and type `lusrmgr.msc` and press **enter**. This will launch the local users and groups editor.



Right click the Users folder and select New User...

Enter a username and password and set the password to never expire.

Untick the default option **User must change password at next logon**

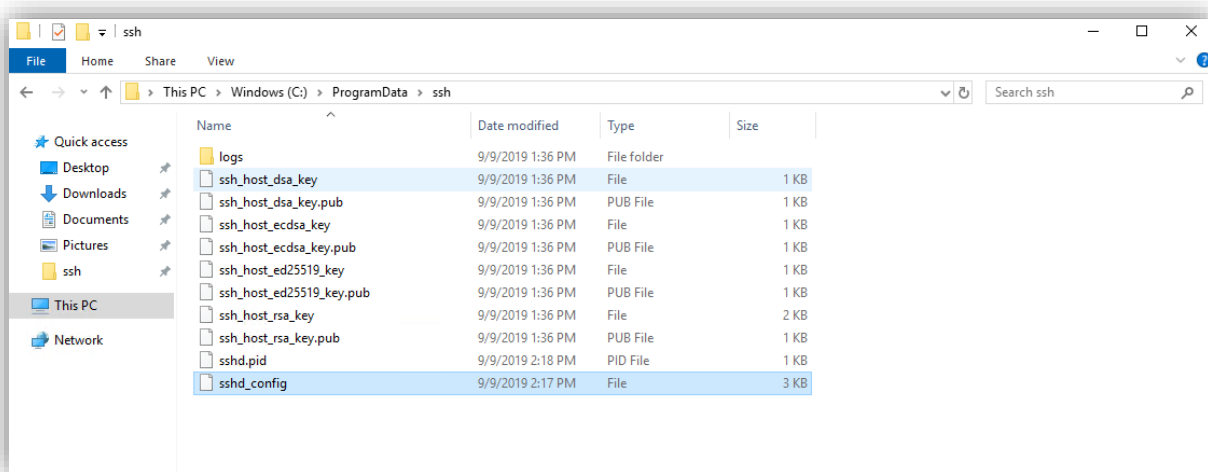


Click **Create**

Now navigate to the following directory

C:\ProgramData\ssh

(ProgramData is a hidden system folder by default)



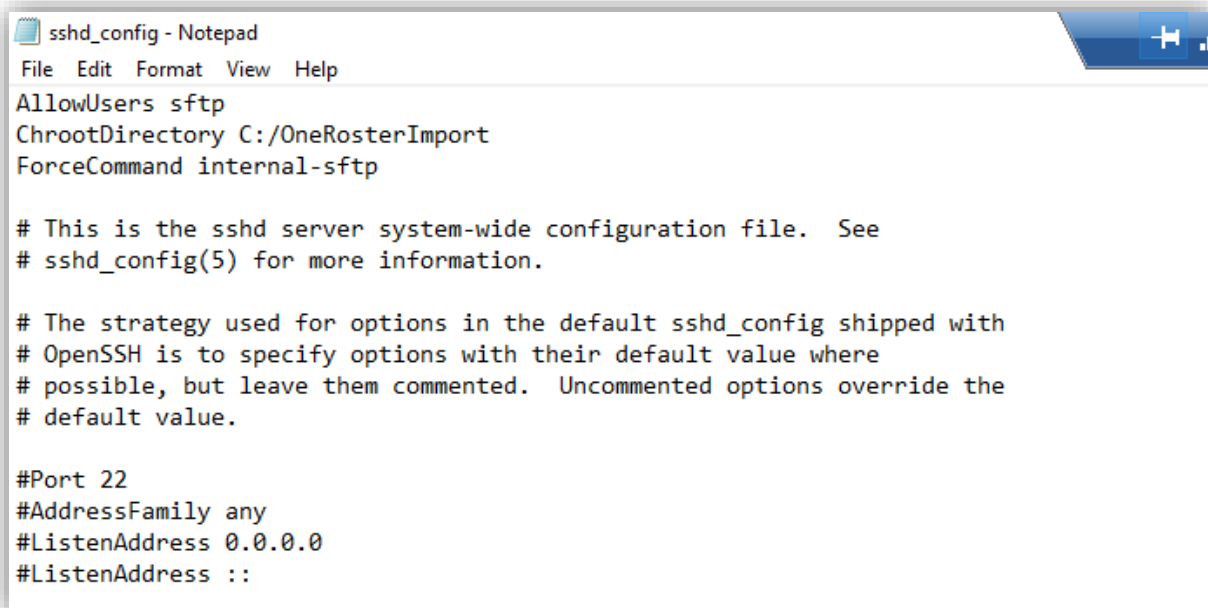
Open the file called **sshd_config** with a text editor. You may need to open the text editor with administrator privileges to save changes.

Add the following lines to the top of the file and **Save**

AllowUsers sftp (change sftp to match the user you created previously)

ChrootDirectory C:/OneRosterImport

ForceCommand internal-sftp



AllowUsers is the user we added to the local users in Windows in the previous step. By adding this line, it prevents any other users from performing the SFTP transfer.

ChrootDirectory prevents users from pushing data to any location on Impero Server and instead forces them to use only the directory used by our Classlink Integration.

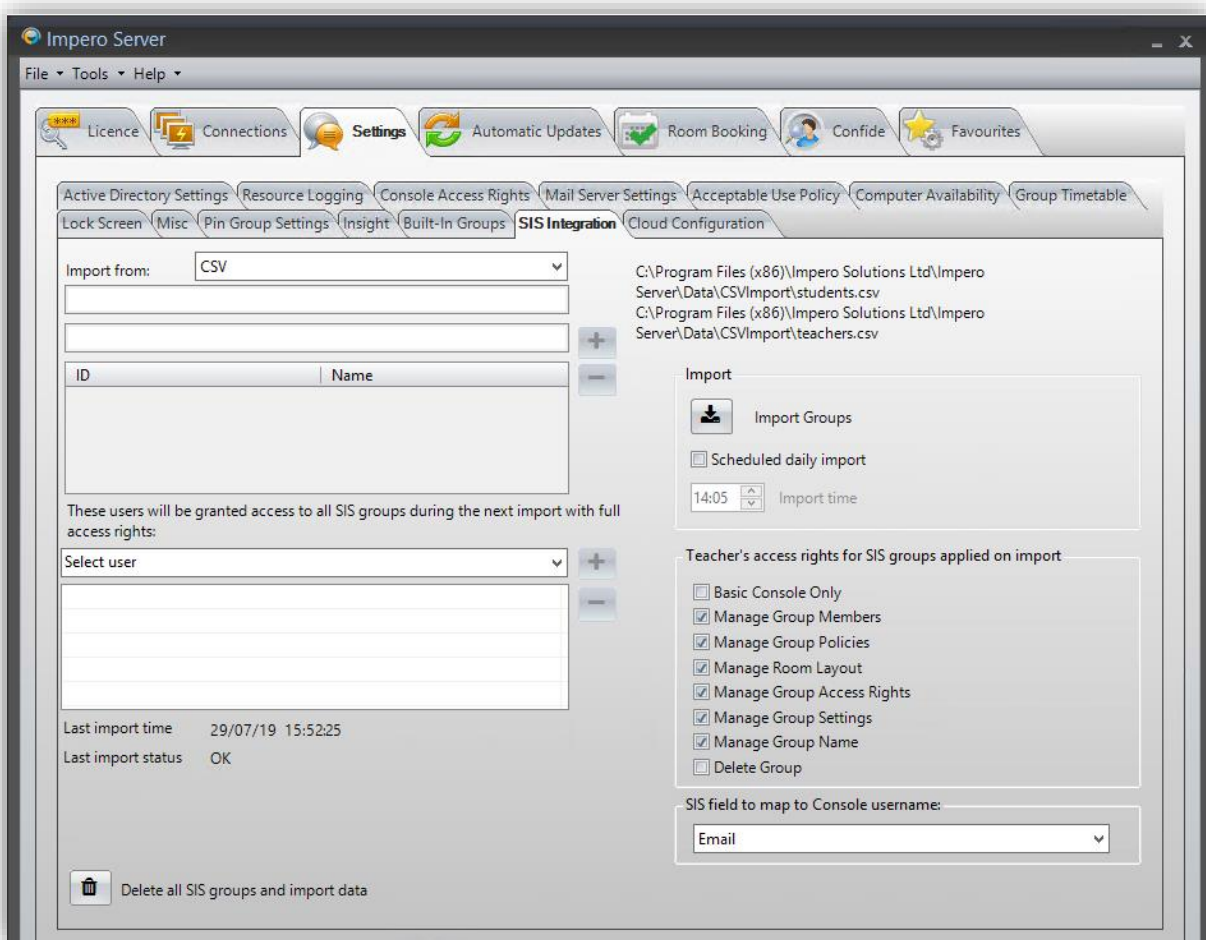
ForceCommand prevents users from interacting with the SFTP Server at the command line level, further enhancing the security.

Configure Impero Server for SIS Integration

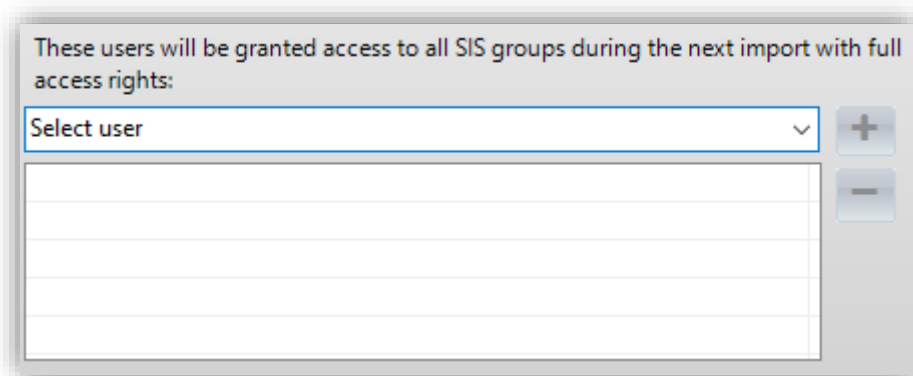
Open the Impero Server app and navigate to the **SIS Integration** tab (Settings->SIS Integration). In the **Import from** drop down menu select CSV. To the right of the drop-down menu we can see the path Impero Server will output the converted OneRoster files to based on your Impero Server installation location.

C:\Program Files (x86)\Impero Solutions Ltd\Impero Server\Data\CSVImport

Converted files must be found in this location for Classlink Integration to function.



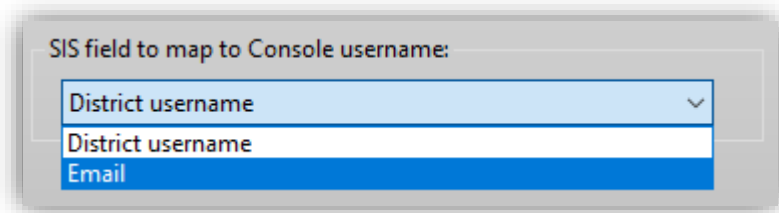
Before we Import Groups we will take a look at some of the other settings on the SIS Integration page.



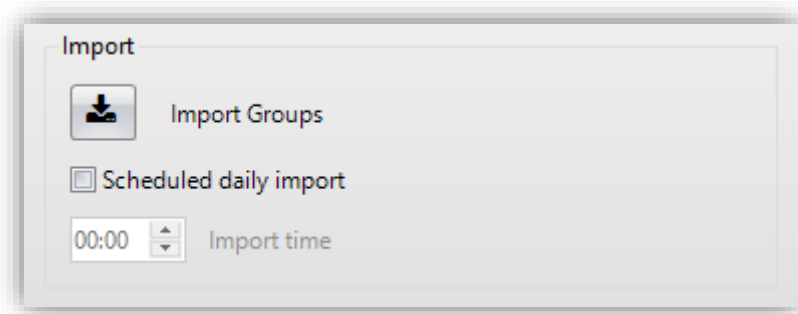
This setting allows Admins to grant users access to all Imported groups regardless of the rights specified in the CSV files. The **Select user** drop down is populated with the users already listed in your console access rights



This option allows admins to specify group access rights on import to restrict customisation of imported groups. You can also specify if teachers have access to **Basic Console Only**, a cut down version of the Impero Console with the focus on Classroom Management for teachers (Windows only)



With the above setting you define whether the import pulls a username or an email address to be added to Impero. If your users are signing into Windows or Mac based devices then use the **District username** option. If users are using ChromeOS devices then select the **Email** option.



Import allows you to begin the import process and add user and create groups. You can schedule the Import to occur at the same time every day. In combination with a scheduled push from the Classlink Roster Server we ensure you groups and membership rules are up to date.

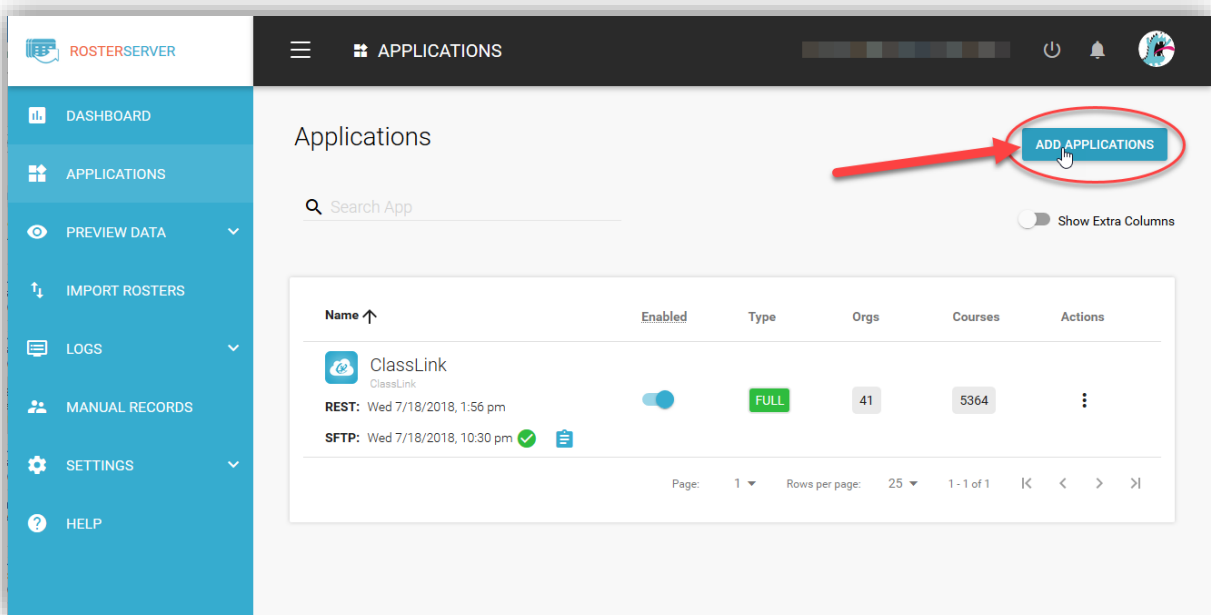
PLEASE NOTE – Impero recommends leaving 10 minutes between the Roster Server push and the Impero Server import to ensure data has been converted before performing an import

Classlink Roster Server

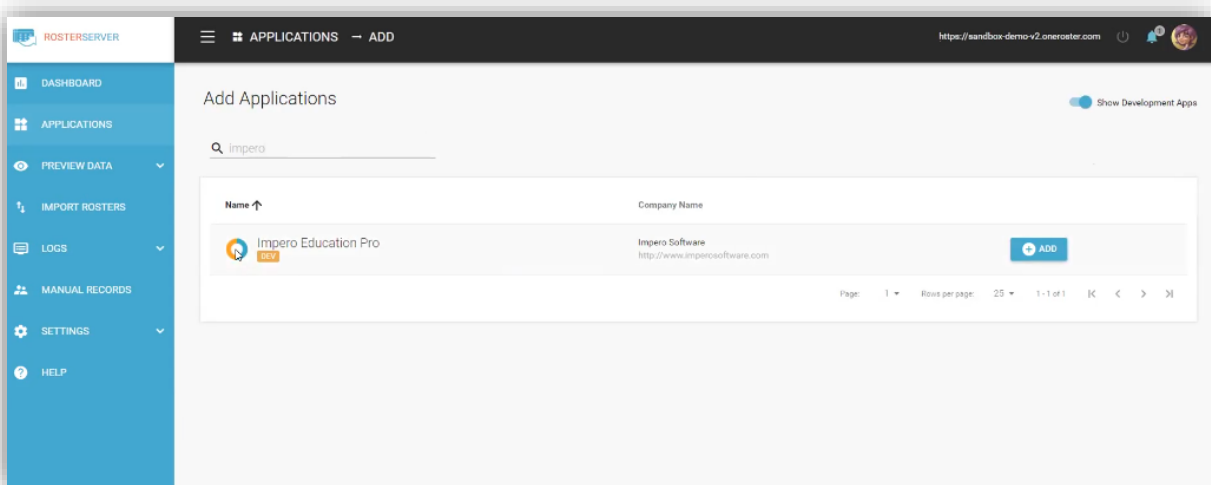
The following section assumes that a Classlink Roster Server has been setup for your school. Classlink Roster Server knowledge base articles can be found [here](#)

Adding the Impero Education Pro Application

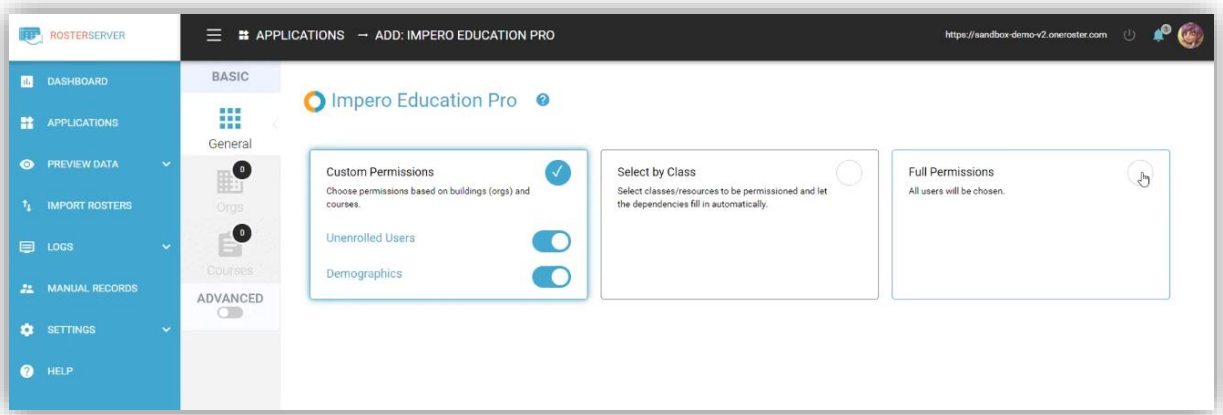
Access your roster server dashboard found [here](#) and select **Applications** and then **Add Applications**



Here is a list of applications that support the Roster Server. Type **Impero** into the search field to filter the list to show our application and click **Add**



On the permissions page you can define what data sets our application can use. Impero Education Pro needs users and classes only in order to generate a successful Integration



Impero Education Pro is currently limited to a maximum of 5000 users and 1200 classes per Impero Server.

A guide that covers Classlink Roster Server Advanced Permissions in more detail can be found [here](#)

Adding the Custom Export application for Multi Server Configurations

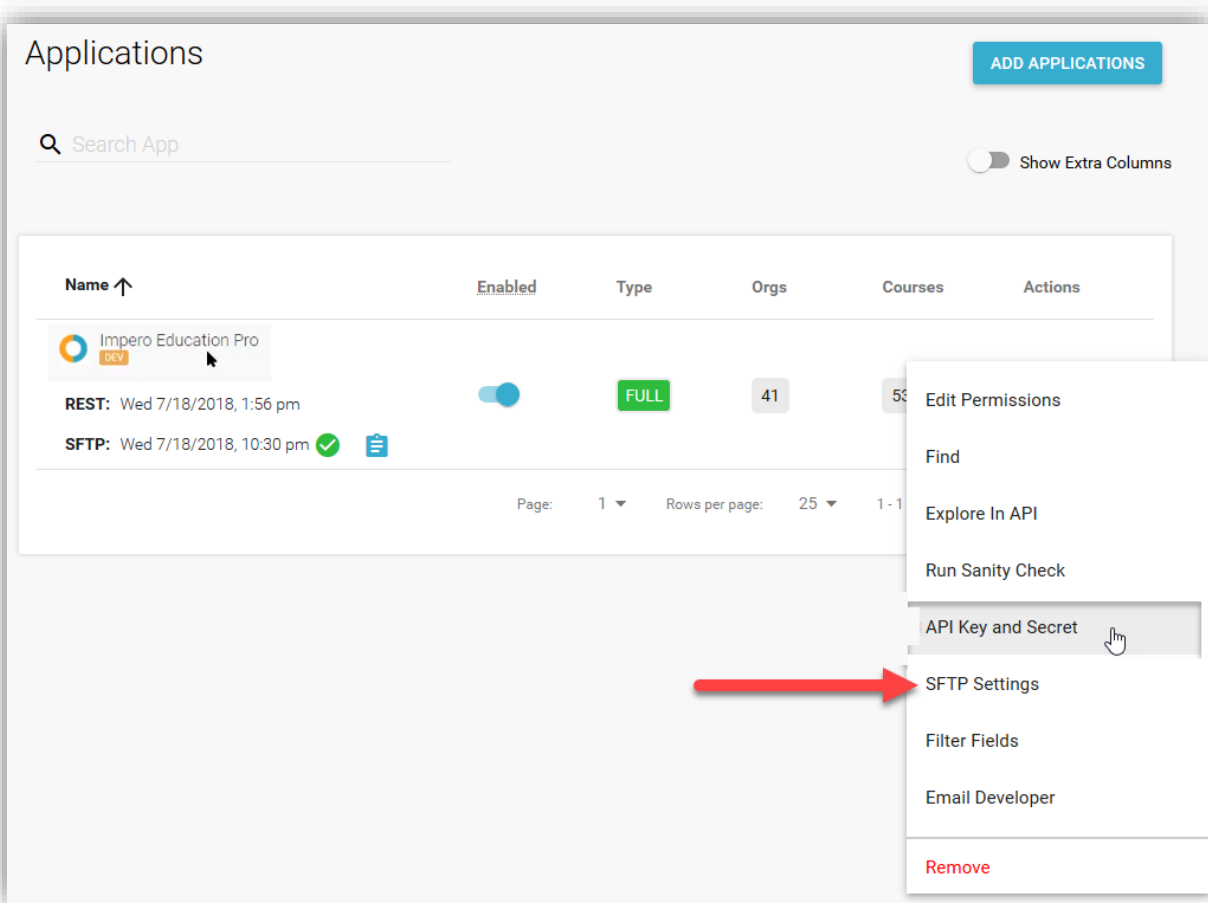
If your organisation has multiple Impero Education Pro Servers, then you will need to add the **Custom Export Application** rather than the Impero Education Pro Application. The **Custom Export Application** can be added to your Roster Server multiple times and each instance can be configured to point to a different Impero Server.

To add **Custom Export Applications** simply search for Export under applications.

Sending Classlink Roster Server Data to Impero Education Pro

Classlink Integration in Impero Education Pro is powered exclusively by the SFTP standard. Classlink Roster Server uses SFTP to send your data directly to your Impero Education Pro Server. In order to facilitate this transfer, some credentials and settings must be setup in our applications SFTP Settings to schedule automated exports with the data that is defined by the applications permissions.

Click the Actions menu -> and choose **SFTP Settings**.



In the Server Details and Authentication Details sections, enter the Impero Education Pro Server details.

Server Details should contain the **IP address** of your Impero Server and use **port 22**. The protocol is **sftp**. The default upload path should be left blank as the Impero Server will define this location as part of the OpenSSH setup (Chrootdirectory)

Authentication Details needs to contain the **username** and **password** you added locally to the Impero Server.

Under File Details, specify the export template that is being sent to the Impero Server. Impero Server supports **OneRoster v1p1** only so this must be selected.

Impero Server does not support processing the CSV's in zipped format so leave the **Zipped** option unselected.

Enter the Schedule Details for when you would like your Roster Server to push data to your Impero Server

Also in Schedule Details, switch the toggle to **Enabled** in order for the transfer to take place.

Click **Save**.

Click **Send Now** to initiate the transfer.

The screenshot shows the 'ClassLink SFTP Settings' dialog box with the following configuration:

- Server Details:** Protocol: sftp, IP Address or Hostname: localhost, Port: 22, Upload Path: /home/rosterdata/exports.
- Authentication Details:** Username: rosterdata, Password: [masked], Use SSH Key: [unchecked], Test Auth: [button].
- File Details:** Export Template: OneRoster v1p1, Zipped: [unchecked].
- Schedule Details:** On Days: Sun, Mon, Tue, Wed, Thu, Fri, Sat, At: 9:03 AM, Enabled: [checked].
- Buttons:** SEND NOW, CLOSE, SAVE.

Import Groups on Impero Server

Now that we have sent data to the Impero Server from Classlink, we can head back over to the Impero Server to perform the Import. Remember once configured pushes and imports can be scheduled to happen automatically.

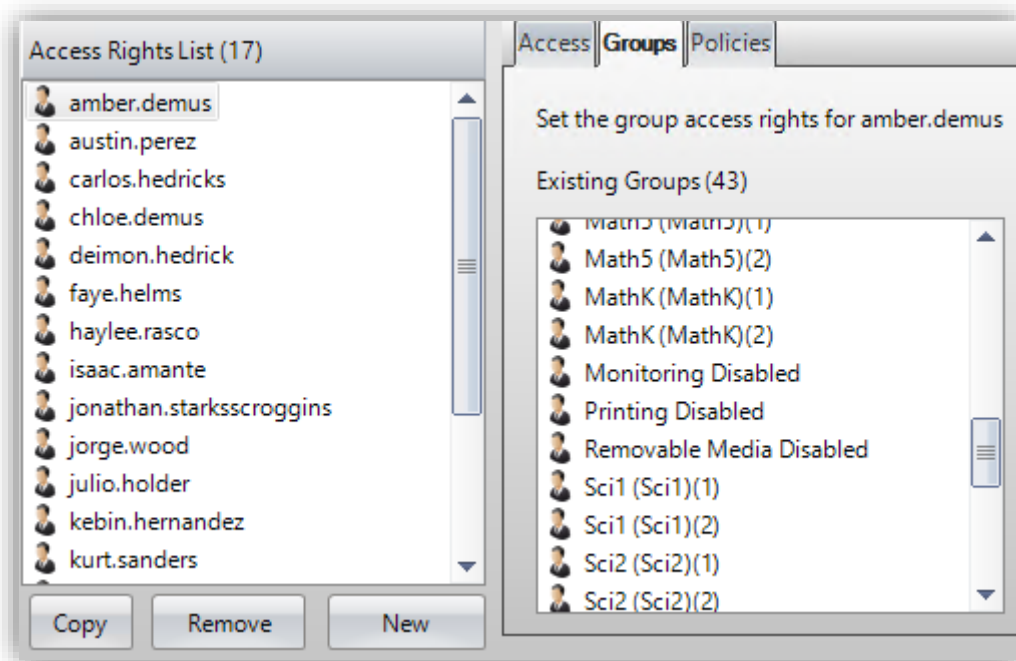
Click the **Import Groups** button to begin the import process. An import in progress is identified by the fetching dialog displayed next to the import status

Last import time 18/06/18 17:08:10
 Last import status Fetching...

Once complete the status will display OK and will update the Last import time

Last import time 10/07/18 12:04:08
 Last import status OK

To verify the import was succesful, navigate to the Console Access Rights tab. Under Access Rights List you should see all the staff users that have been granted access and in the groups tab you should see the total number of groups that have been created.



info@imperosoftware.com

www.imperosoftware.co.uk

www.imperosoftware.com

+44 (0) 1509 611341 UK

877-883-4370 USA