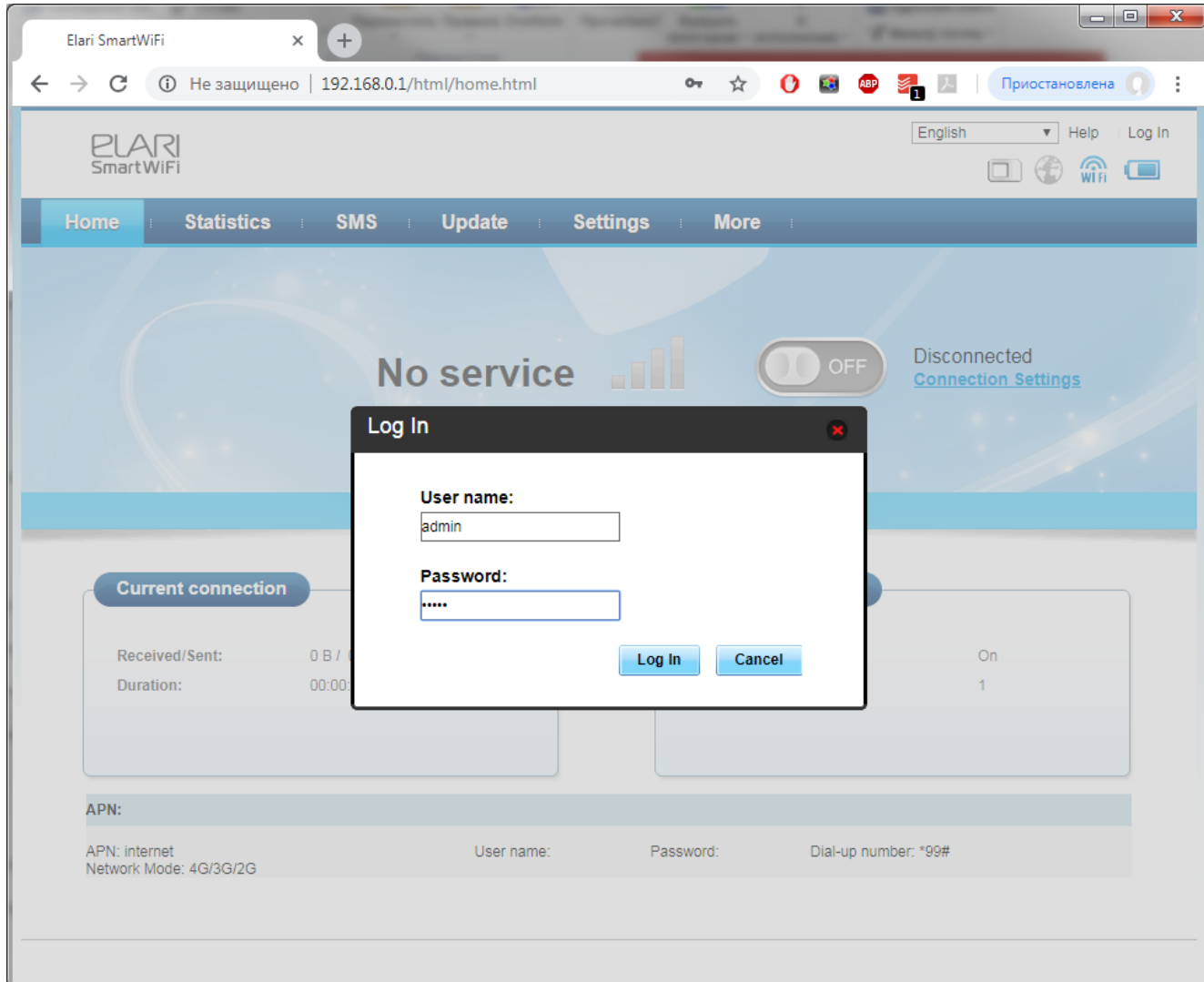


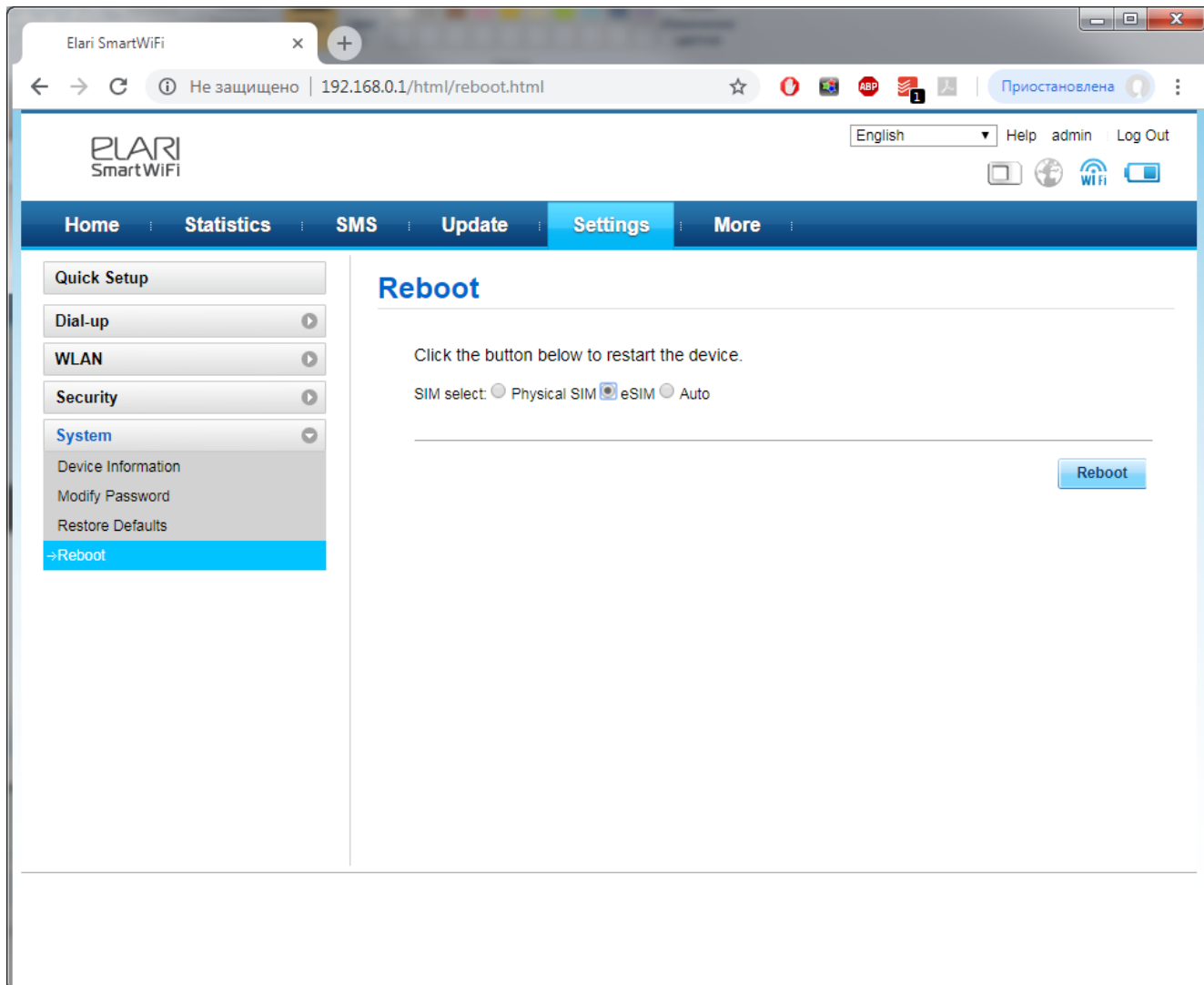
Get started for eSIM

- 1) Turn the router ON by holding POWER button.
- 2) Connect your device (smartphone/tablet/laptop) to the Elari_XXXX Wi-Fi network using the KEY on the router screen as password.
- 3) While connected to the ELARI_XXXX network (no internet connection required!), open the internet browser on your device, type <http://192.168.0.1> in the address bar and press GO
- 4) Enter username and password (default login: admin password: admin) and choose language.



- 5) Choose MORE (if you are using a mobile phone browser) or skip this step if you are using a computer.

6) Go to the SETTINGS tab and select the REBOOT section in the SYSTEM section.



7) Choose «eSIM» or «Auto» in SIM select and click Reboot button.