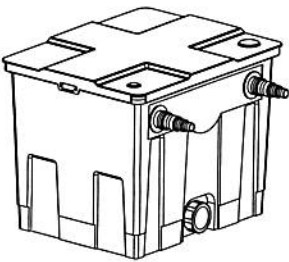


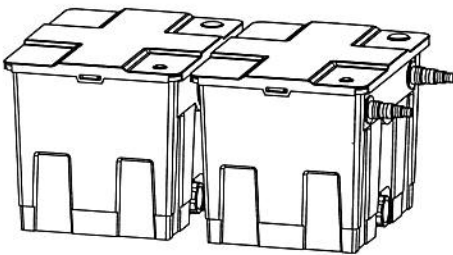


# POND BIO FILTER

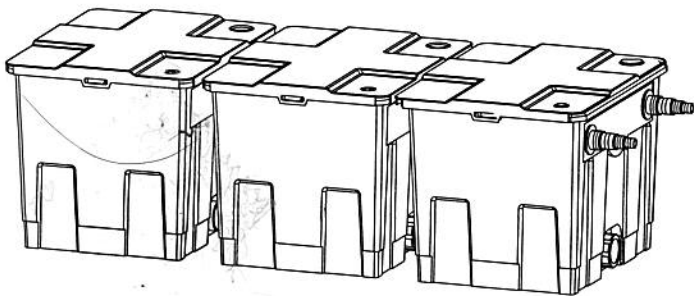
Instruction >>>



CBF-350

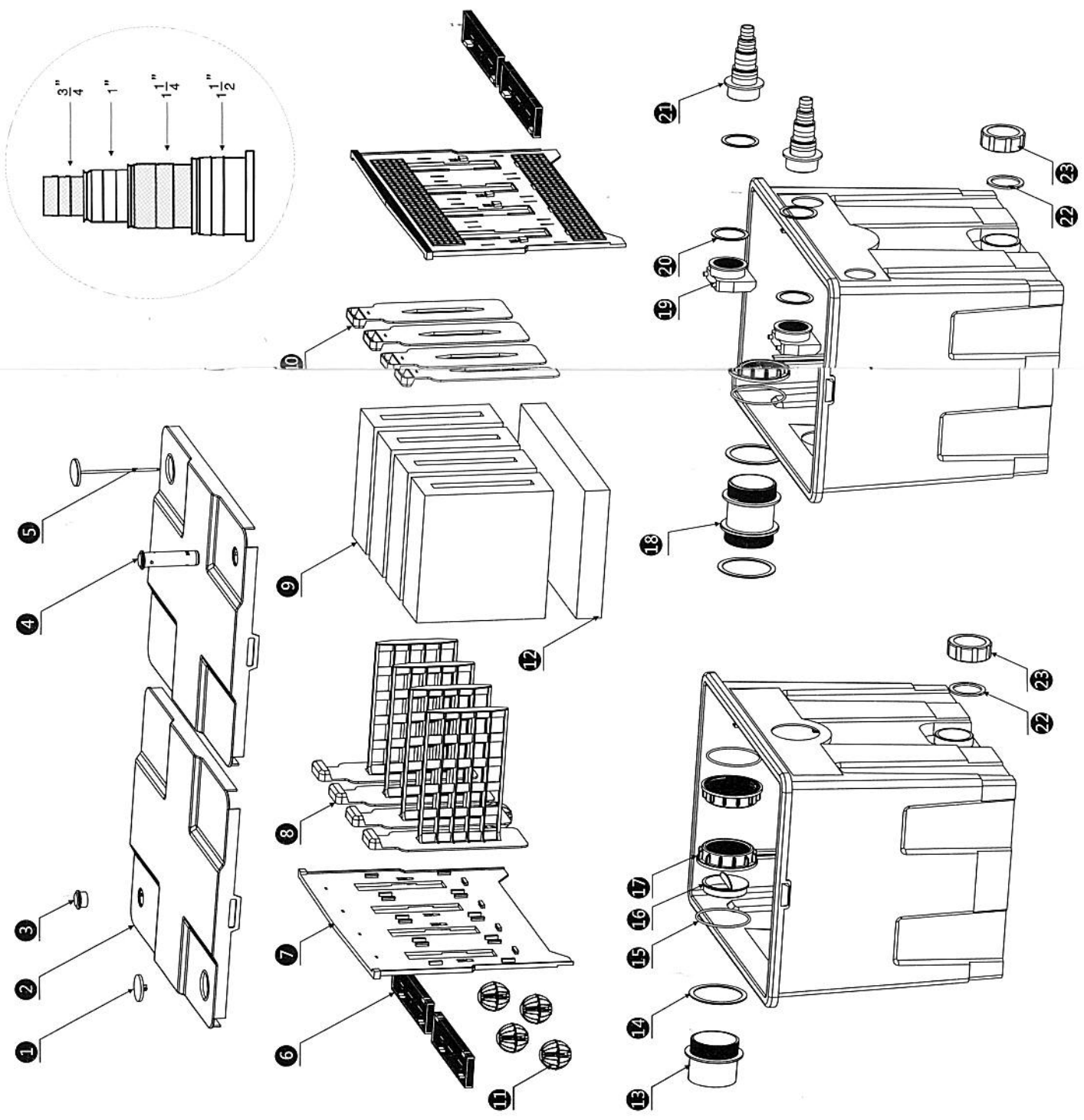


CBF-350B



CBF-350C

---



1	BIG COVER
2	BOX COVER
3	SMALL COVER
4	WATER LEVER INDICATOR
5	THERMOMETER
6	RAIL FENCE
7	INSERT
8	SPONGE FIXUP
9	SPONGE
10	SPONGE PRESS BOARD
11	BIO BALL
12	FILTER PAD
13	OUTLET
14	OUTLET RUBBER RING
15	OUTLET O RING
16	WATER CONTROL VALVE
17	OUTLET NUT
18	CONNENTION
19	ADD OXYGEN PART
20	INLET RUBBER RING
21	INLET
22	GASKET
23	SEWAGE DISCHARGE COVER

### 1, Features

- 1) Efficient purification—Ultraviolet sterilization before the filtration, purification more effective.
- 2) With super power ful bio—filtration, bulky filter, multi—chamber water carriage, easier installation and cleaning with modular structure.
- 3) The special water path design, which will do the first step to filtrate water. That will reduce pressure of cotton filtration system and do less maintenance.
- 4) The special bracket design for filter cotton will make it easy to wash.

### 2, Work principle

It use water sedimentation, mechanical filtration and bacilli in bio materials which can separate and decompose injurant things to do good filtration.

### 3, Basic parametric

Products of this series are suitable for filtering garden pool and koi pool. Use correctly and the pool water will be purified effectively.

Bio-Filter	CBF-350	CBF-350B	CBF-350C
Dimensions in mm	520x435x420mm	900x520x420mm	1360x520x420mm
Max flow-through	8000L/h	12000L/h	12000L/h
Inlet hose adapter	$\frac{3}{4}$ "- $\frac{1}{2}$ "	$\frac{3}{4}$ "- $\frac{1}{2}$ "	$\frac{3}{4}$ "- $\frac{1}{2}$ "
Outlet(mm)	70mm	70mm	70mm
No. of filter mats	1	2	3
No. of filter thick sponges	2	4	8
No. of filter thin sponges	2	4	4
Suitable for ponds with fish	6m <sup>3</sup>	25m <sup>3</sup>	45m <sup>3</sup>
Suitable for decorative ponds	12m <sup>3</sup>	50m <sup>3</sup>	70m <sup>3</sup>
Connection to uv light	CUV-218(18W)	CUV-224(24W)	CUV-236(36W)

Bio-Filter	1xCBF-350		1xCBF-350	
	Decorative ponds	Ponds with fish	Decorative ponds	Ponds with fish
2000L/h	4.5	2.5	--	--
3000L/h	6	3	12	6
4500L/h	8	4	16	8
3000L/h	10	5	20	10
-----10000L/h	--	--	30	15
-----12000L/h	--	--	50	25

Parallel connection of filters will enhance the filtration effect:

Bio-system2	2xCBF-350		3xCBF-150	
	Decorative ponds	Ponds with fish	Decorative ponds	Ponds with fish
----- (15000L/h)	80	40	130	65

A guide to filtration turnover

No fish content	Should be circulated 4/day
A guide pond with normal fish content(1kg/m <sup>3</sup> )	Should be circulated 6/day
A guide containing more than 1kg fish per m <sup>3</sup>	Should be circulated 12/day

### 4, Installation

- 1) Open the head cover, pull out bio-cotton compound, and wash it.
- 2) Wash all of the filter media.
- 3) Secure germicidal lamp.
- 4) Put in clean filter media exactly.
- 5) Connect pipe—outlet of the pump to inlet of the germicidal lamp, then connect outlet pipe of the filter to the pond.
- 6) Insert the power plug, the filter begins to work.

### 5, Operation modes

A, Pool—side operation (Ideal position and set up) advantage: Close to surface, less flow. Disadvantage: put in shade; it is so difficult.  
 B, Operation in Shade—draining through pipe. Difficult to assemble: One pump can run waterfall and filter.

Disadvantage: Much flow loss.

### 6, Operation

- 1) Water outlet of the filter must be higher than water surface of the pool.
- 2) This filter is mainly driven by the pump. It is turned on/off by plugging in/out.
- 3) If the filter is installed in Mode B, after the pump runs and water is pumped in the filter, check if the water can be drained out in time. If not, pull out the plug, make the platform to support the filter higher or add a valve to the water inlet pipe to control the flow.
- 4) The platform must be strong enough to support the filter full of water. To avoid water flow be blocked by dirt, the filter media must be cleaned regularly.
- 5) 30–60 minutes after the pump runs, check if there is water leakage or other problem. If happens any trouble, immediately pull out the plug, get rid of the trouble, then restart the machine.
- 6) The inlet can be connect to  $\frac{3}{4}$ "- $\frac{1}{2}$ " hose. According to the hose diameter, cut off the inlet which is too small or it will affect the flow.
- 7) Nutrients & nitrifiers aqua is the ideal biological starter for rapid build of filter bacteria. Pull it into the filter media before the filter working.

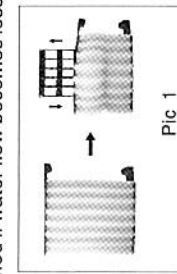
8) Install the uv lamp before the filter can kill the algae and bacteria. So it can make the water to clean and healthy.

Excurrence: One pump runs waterfall and filter.

Cisadvantage: Much flow less, noisy waterfall has to run all night.

### 7, Cleaning

Please observe actual condition of the fish pool and wash it accordingly, in order that no dirt or filth block water flow. If the pool is normal ecological condition and without too much filth, it should wash the filter media every 30 days. The pump should be washed if water flow becomes less.



Pic 1

- 1) Turn off the pump and open the cover.
- 2) Wash the filter media with tap water or other clean water, don't use tap water detergent or soap to wash filter media directly.
- 3) It is not necessary to renew all filter media at the same time, instead, they should be renewed separately within 2–3 weeks.
- 4) If the bottom of the water is too dirty, discharge the water out of the filter.
- 5) Open the limber hole at bottom, drain out dirty water.
- 6) Reassemble it please.

8, The instruction of germicidal lamp please take other instruction.

