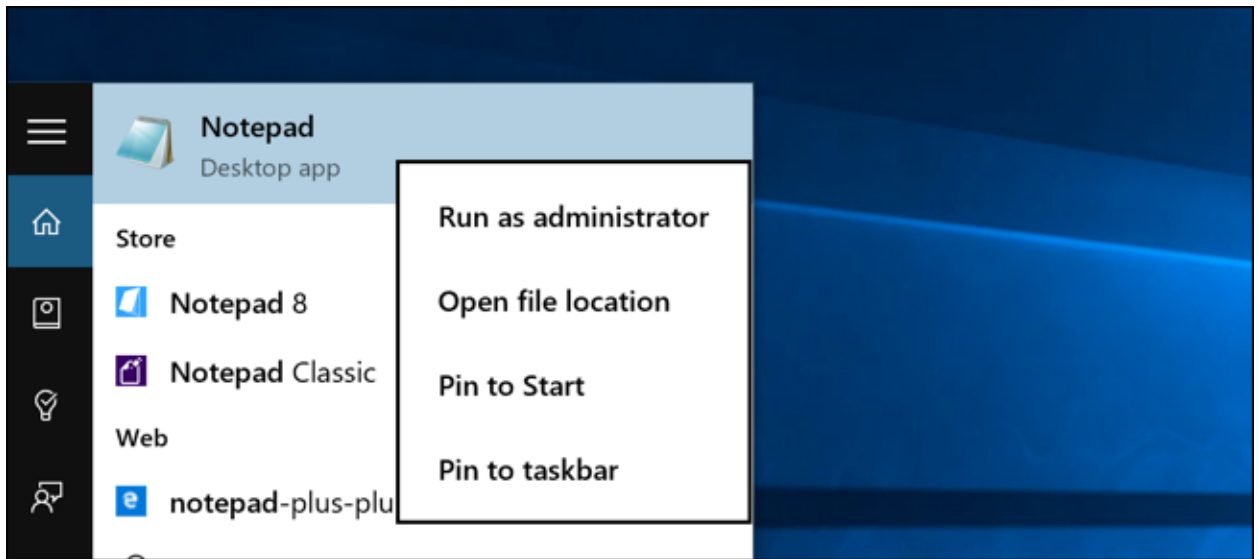
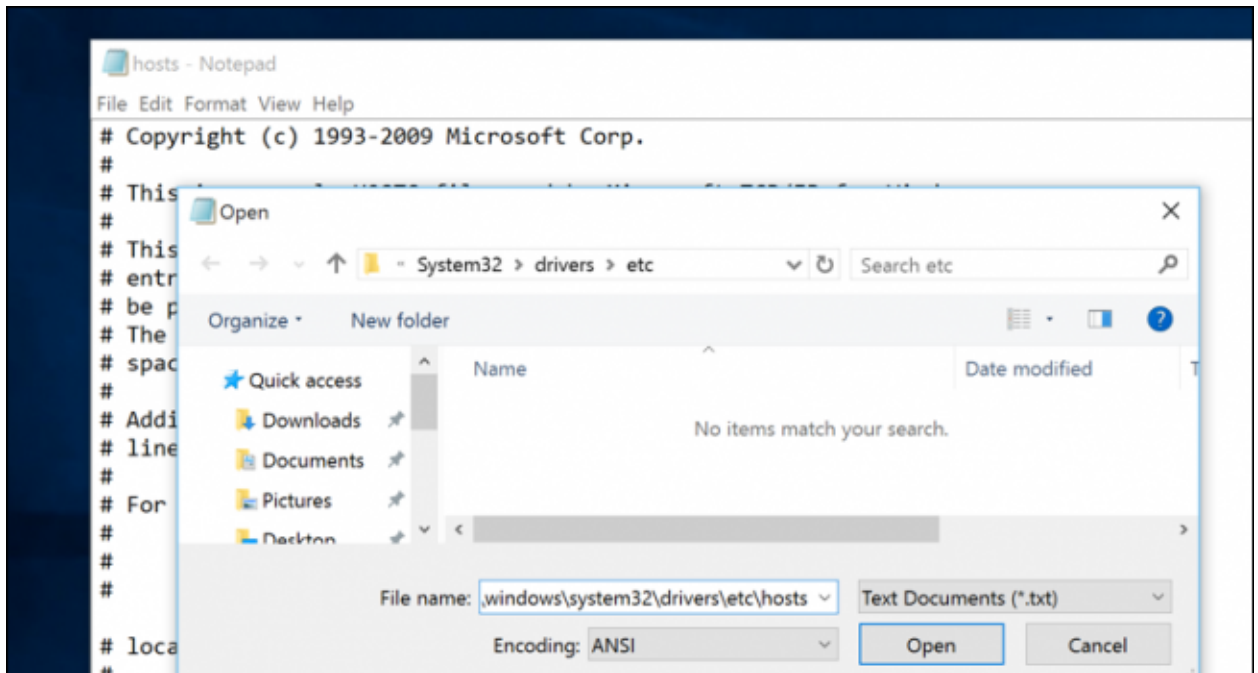


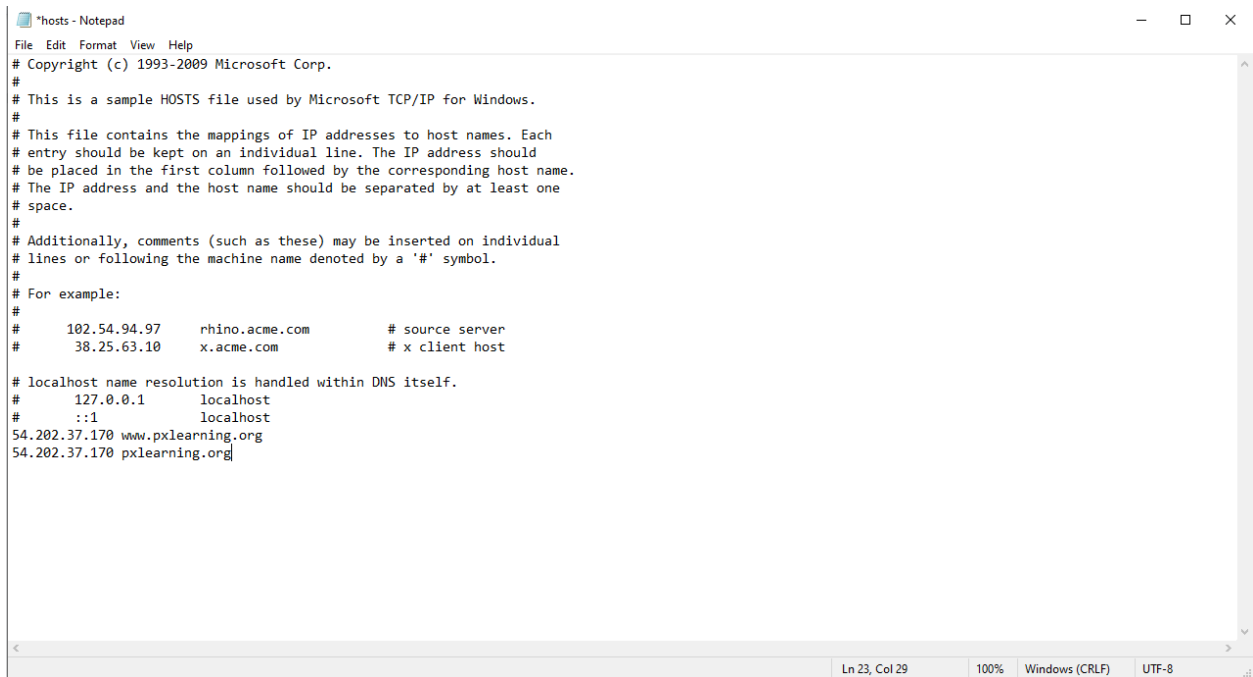
1. Press the Windows button on your keyboard and type notepad
2. Open up a new notepad document using administrator



3. Click File > Open then type this in the File Explorer window  
c:\windows\system32\drivers\etc\hosts



4. Add these two lines to the bottom of the file.  
54.202.37.170 [www.pxlearning.org](http://www.pxlearning.org)  
54.202.37.170 [pxlearning.org](http://pxlearning.org)



```
*hosts - Notepad
File Edit Format View Help
# Copyright (c) 1993-2009 Microsoft Corp.
#
# This is a sample HOSTS file used by Microsoft TCP/IP for Windows.
#
# This file contains the mappings of IP addresses to host names. Each
# entry should be kept on an individual line. The IP address should
# be placed in the first column followed by the corresponding host name.
# The IP address and the host name should be separated by at least one
# space.
#
# Additionally, comments (such as these) may be inserted on individual
# lines or following the machine name denoted by a '#' symbol.
#
# For example:
#
#       102.54.94.97       rhino.acme.com       # source server
#       38.25.63.10      x.acme.com         # x client host

# localhost name resolution is handled within DNS itself.
#       127.0.0.1        localhost
#       ::1              localhost
54.202.37.170 www.pxlearning.org
54.202.37.170 pxlearning.org
```

5. Save and close the file.