

by **S** smartwares®  
**CAVIUS**™



# **User guide**

## for smoke detector

# CAVIUS™

## OPTICAL SMOKE ALARM DEVICE

Commercial reference: 2105-002

Developed by CAVIUS

The smoke alarm is designed for private homes, camping trailers, mobile homes and caravans. It is not recommended for boats.

---

**PLEASE READ THE USER  
GUIDE CAREFULLY BEFORE  
INSTALLATION AND RETAIN  
FOR FUTURE USE.**

---

# CONTENTS

Technical information.....	1
1. How to set up and connect alarms.....	5
2. The best areas to install the smoke alarm:.....	10
3. Areas where NOT to install the smoke alarm:.....	12
4. Placement: .....	13
5. Installing the smoke alarm:.....	15
6. Test function:.....	18
7. Normal mode:.....	20
8. Alarm mode:.....	21
9. Pause/Hush function:.....	22
10. Low battery signal:.....	23
11. Battery replacement:.....	24
12. Trouble shooting:.....	25
13. Other information:.....	26

## TECHNICAL INFORMATION

The maximum number of alarms that can be inter-linked within a house group are 32.

**Please note:** These must be alarms from the range



The distance between interlinked alarms depends on the house layout and they should always be tested after installation. It is not advised to get more than 10m distance between two smoke alarms.

Diameter: 60mm (house), 68mm (base)

Height: 44mm

The alarm is powered by a replaceable 3v CR123A lithium battery. Please note that correct operation of the smoke alarm device is ensured by use of one of the following batteries: DURACELL, PANASONIC or HUIDERUI.

Interlinked by RF: 868 MHz

Complies to standards: EN14604:2005/AC:2008,  
EN300-220



CHAMBER  
FILTER

TEST BUTTON

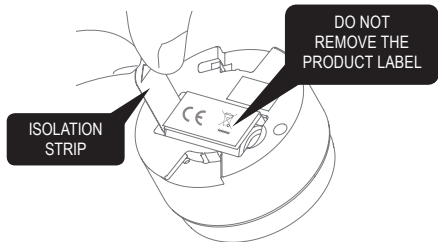


MOUNTING  
BASE

RED LED

## 1. HOW TO SET UP AND CONNECT ALARMS:

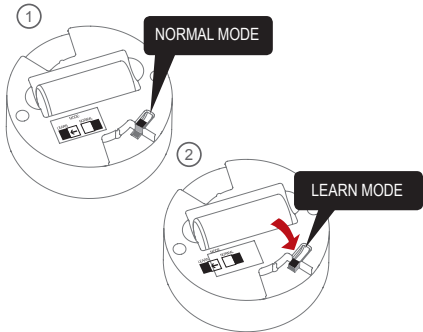
Start by pulling out the battery isolation strip as shown.



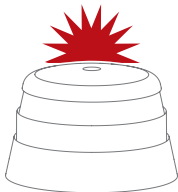
Please note: The product label must not be removed as it contains important information regarding the product.



**All alarms** that need to be connected in the house should be put into 'Learn Mode' by sliding the switch on the back of the alarm to the 'Learn Mode' position.



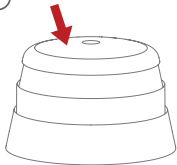
The red LED will light up to indicate that 'Learn Mode' has been selected.



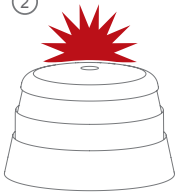
Please note that when the alarms are placed in 'Learn Mode' they can't be inserted into the mounting base. Do not take out the battery during 'Learn Mode' as this will interrupt the learn process.

Press the button at the top of one alarm only. This alarm will become the master and will start sending out a specific house code to the other alarms. The red LED will flash.

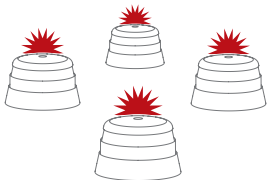
①



②



As the other alarms receive the specific house code, they will also flash the LED light.



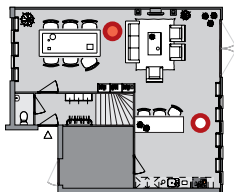
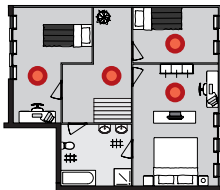
When all alarms flash the red LED, they are connected and can be switched out of 'Learn Mode' and installed.



Optional: To connect smoke alarms with a home automation system (i.e. HomeWizard), also pair every smoke alarm *individually* according to the in-app instructions.

## 2. THE BEST AREAS TO INSTALL THE SMOKE ALARM:

- Install an alarm between possible fire sources and bedrooms as a minimum.
- Install alarms on each floor of the house, in hallways and stairways.
- Alarms in each room such as bed rooms and living rooms.

Additional alarms increase the security.



-  Minimum
-  Recommended

### 3. AREAS WHERE **NOT** TO INSTALL SMOKE ALARMS:

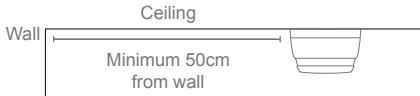
- In dusty rooms
- At the top of a high pointed ceiling, in ceiling corners, and within 50cm of a wall.
- In rooms where the temperature goes outside +4° to 38°C or above 90% relative humidity not condensing.
- In kitchens, garages, laundries, or too close to fireplaces; areas where either dampness, gases or smoke could occur.  
Place the alarm where it is reachable in order to test the battery and for maintenance.

#### 4. PLACEMENT:

The smoke alarm is design to be installed on a ceiling or wall.

##### **For ceiling installation:**

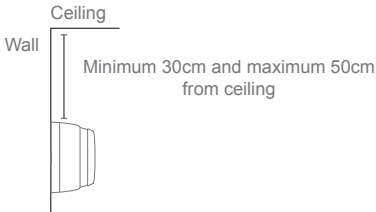
The smoke alarm should be a minimum of 50cm from the wall.





### For wall installation:

The smoke alarm should be a minimum of 30 cm and maximum of 50cm from the ceiling.

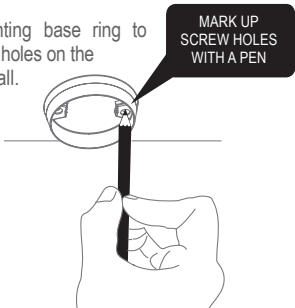


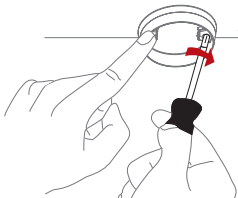
With a minimum of one smoke alarm per floor and a maximum distance between smoke alarms of 10 meters.

## 5. INSTALLING THE SMOKE ALARM:

Detach the alarm from the mounting base by twisting counter clockwise.

Use the mounting base ring to mark the screw holes on the ceiling or the wall.

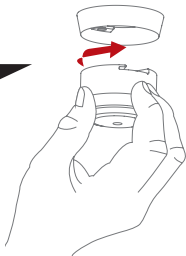




USE THE  
ENCLOSED  
SCREWS AND  
PLUGS

Once the mounting base is installed, attach the alarm by twisting clockwise until it clicks. If the battery is either missing or inserted incorrectly, or the switch is in 'Learn Mode', the smoke alarm will not be able to click into the mounting base.

**CLICK THE SMOKE  
ALARM FIRMLY INTO THE  
BASE TO LOCK**



## 6. TEST FUNCTION:

After installation, and at least once per quarter, test all of your alarms to ensure they are operating correctly and are within range of each other.

It is recommended to check visually every week if the LED flashes correctly (every 48sec.)

*Press the test button on any alarm for at least 6.5 seconds (count 2 sets of 3 sound sweeps). This will send out a test signal from the alarm; all other connected alarms should receive the signal within a short time. The alarms will emit a short beep and the LED will flash every 8 seconds for 2 minutes.*

NOTE: Test signal will send a reduced RF signal in order to make sure it will work in normal condition.

When the test signal is sent out, the alarms will respond in two ways:

1. A single beep every 8 seconds indicates that the alarms are connected and functioning.
2. Three short beeps every 8 seconds indicates a smoke sensor fault. The alarm should be cleaned by running the vacuum (on a low setting) around the smoke alarm chamber and tested again.

If required this indication can be stopped early on each alarm by a short press of the test button.

**TIP:** It is safe to cover the sound output hole with your finger during the testing to minimize the sound level emitted.

If the problem continues, please visit [www.cavius.com](http://www.cavius.com) for any trouble shooting.

## 7. NORMAL MODE:

In normal mode the LED will flash every 48 seconds to show correct operation.

## 8. ALARM MODE:

When a concentration of smoke is detected, the smoke alarm will go into 'Alarm Mode'. It will sound the alarm signal and the LED will flash.

The smoke alarm will also transmit the alarm signal to the other connected alarms, which will also sound the alarm signal after a short delay.

Please note that only the originating alarm's LED will flash, so it can be identified.



## 9. PAUSE/HUSH FUNCTION:

If the smoke alarms are to set into a false alarm by cooking, fireplace, etc. they can be paused for 10 minutes by pressing the test button on the originating smoke alarm only (indicated by the flashing LED).

The reason of this is that it is necessary to locate the source of the alarm before using the hush function. This is to make sure that it is not a life threatening situation.

## 10. LOW BATTERY SIGNAL:

Your product has a 5Y battery life.

When the battery is starting its end of life, a short beep will sound out every 48 seconds for 30 days.

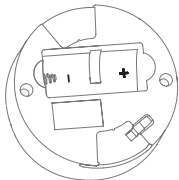
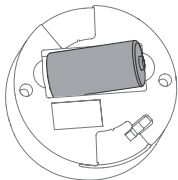
The alarm effected by the low battery will only beep, no other connected alarms will sound.

It is safe to change batteries in the alarms without going through the learn process again – they will not forget the codes during the battery change process.

## 11. BATTERY REPLACEMENT:

To replace the battery, detach the smoke alarm from the mounting base by twisting counterclockwise.

Replace the battery respecting the polarities. Attach the alarm in the mounting base by twisting clockwise until it clicks, and test the alarm.



## 12. TROUBLE SHOOTING:

- Dust particles in the smoke chamber which can be removed by vacuuming the mesh.
- High humidity condensing which can be resolved by drying the smoke alarm.

If the smoke alarm does not work when the test button is pushed, the probable cause is a faulty battery. Check if the battery is worn out and replace it. **Always test the alarm after replacement of battery.**

### **13. OTHER INFORMATION:**

Do not paint the alarm.

Note the local country regulations regarding installation.

Disposal: For battery and product, please dispose properly at the end of life. This is electronic waste which should be recycled.

Please note local regulations about information to your insurance company regarding installed smoke alarms.

The CE mark affixed to this product confirms its compliance with the European Directives which apply to the product and, in particular, its compliance with the harmonized specifications of standard EN 14604 relating to Construction Products Regulation 305/2011.

### **Download Declaration of Performance (DoP) en Declaration of Conformity (DoC)**

1. Go to [service.smartwares.eu](http://service.smartwares.eu)
2. Go to: 'Find manuals and support for your product'.
3. Fill in article number: 10.043.19
4. Download DoP
5. Download DoC

### **Intended use: Fire Safety / Essential characteristics: passed**

- Nominal activation conditions / Sensitivity, Response delay and Performance under fire condition

- Operational reliability
- Tolerance to supply voltage
- Durability of operational reliability and response delay, temperature resistance.
- Durability of operational reliability, vibration resistance
- Durability of operational reliability, humidity resistance
- Durability of operational reliability, corrosion resistance
- Durability of operational reliability, electrical stability

126599 rev 2



EN14604 : 2005/AC:2008  
DoP no.: 2105-002



Distributed by:

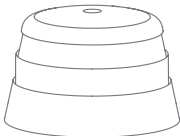
Smartwares | Jules Verneweg 87 | 5015BH Tilburg | The Netherlands

Developed by:

CAVIUS Aps | Julsovej 16 | 8660 Silkeborg | Denmark. Manufactured in P.R.C.

# CAVIUS™

by  smartwares®



<b>smartwares®</b> safety & lighting	NL : 0900-2088888 lokaal tarief	<b>CUSTOMER SERVICE</b>
	BE : 070-233031 lokaal tarief	
FR : 0825 560 650 15ct/min.		
DE : +49 (0) 1805 010762 14Ct./Min. dt. Festnetz, Mobil max. 42Ct./Min		
UK : +44 (0) 845 230 1231		
<b>WWW.SMARTWARES.EU</b>	ES : +34 938427589	