



Connecting using the SAAR Interface Box

Written By: Jessi Jones

INTRODUCTION

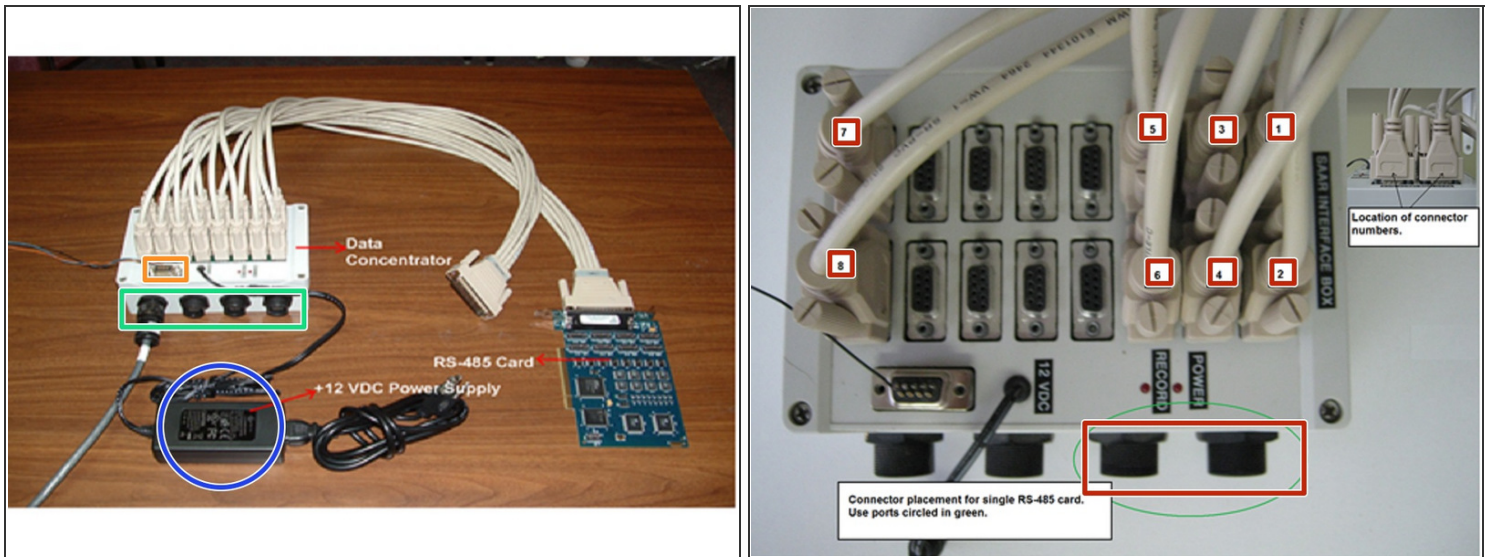
Measurand's SAAR Interface Box is used for large installations of multiple SAAs.

This Guide references the following documentation:

['Connecting using the SAAR Interface Box'](#)

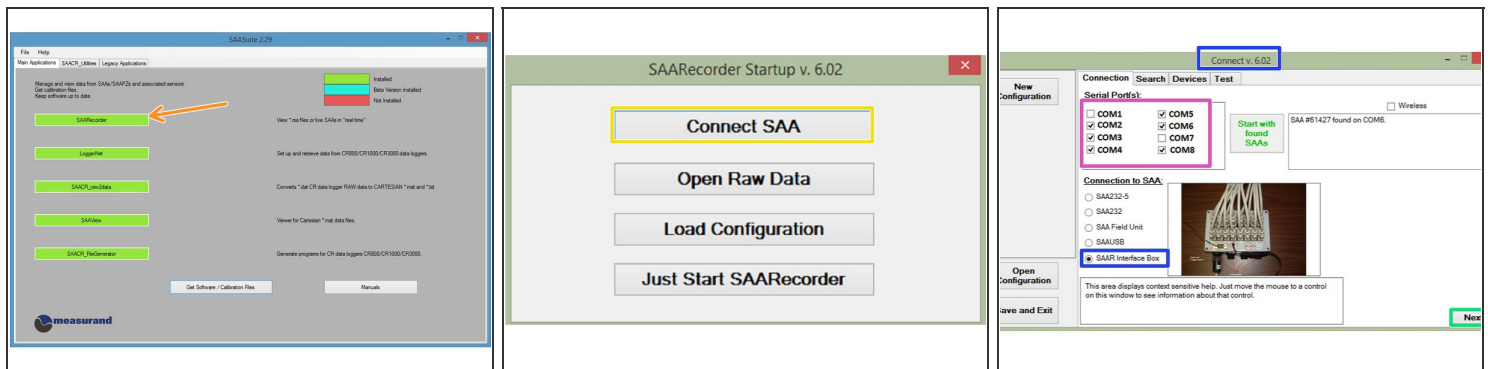
['SAARRecorder'](#)

Step 1 — Recommended Start Up Procedure



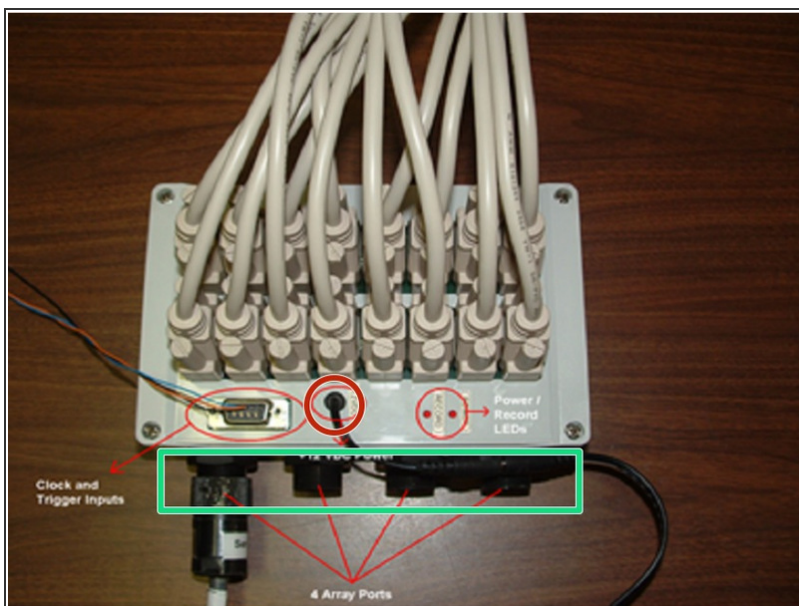
- Connect the data cable from each SAAR to one of the four 10-pin ports of the SAAR Interface Box
 - It does not matter which SAAR is connected to which port - the SAARs will be detected by the SAARRecorder application
 - If 8 or fewer RS-485 ports are required, then only one RS-485 card is needed and should be wired as shown in **RED**
 - Apply power to the SAAR Interface Box by plugging in its corresponding +12 VDC power supply
 - Turn on the clock input (if used) to the SAAR Interface Box (Optional)
- ① For more information refer to '[Connecting using the SAAR Interface Box](#)'

Step 2 — SAARrecorder



- Start SAARrecorder application to collect data
- Click 'Connect SAA'
- **Connection Window:**
 - Select the COM Port(s) the SeaLevel RS-485 PCI card is using
 - Select 'SAAR Interface Box'
 - SAAR serial number will not be found automatically click 'Next' and go through the 'SAARrecorder Connection Completion' Guide

Step 3 — Recommended Shutdown Procedure



- Close SAARrecorder application (if it is running)
- Clear the record data and clock inputs (if used) to the SAAR Interface Box
- Unplug the +12 VDC power supply from the SAAR Interface Box
- Unplug each SAAR data cable from the 10-pin SAAR Interface Box ports
- For more information refer to 'Connecting using the SAAR Interface Box'

Step 4 — Trouble Shooting



- If there are issues connecting go to [Trouble Shooting](#)

This document was last generated on 2016-11-18 03:14:59 AM.