

Applying Paper-Less MDCC License Keys

[Check Modification bundles applied to MDCC environment](#)

[Check and/or Install Product Definitions](#)

[Add MDCC License Keys](#)

To apply keys, Paper-Less MDCC must be installed on the iSeries. See the MDCC instruction manual for installation requirements and instructions. The installation installs the product identifiers needed to apply the license.

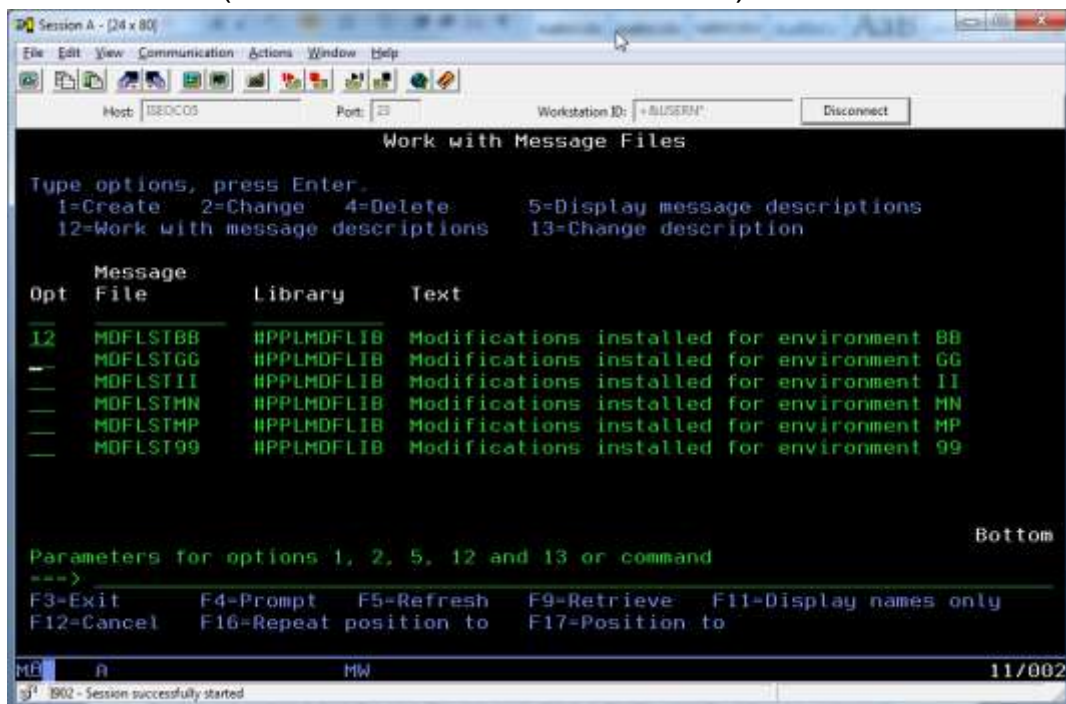
Sign into green screen as QSECOFR for all functions listed below:

Check Modification Bundle Level

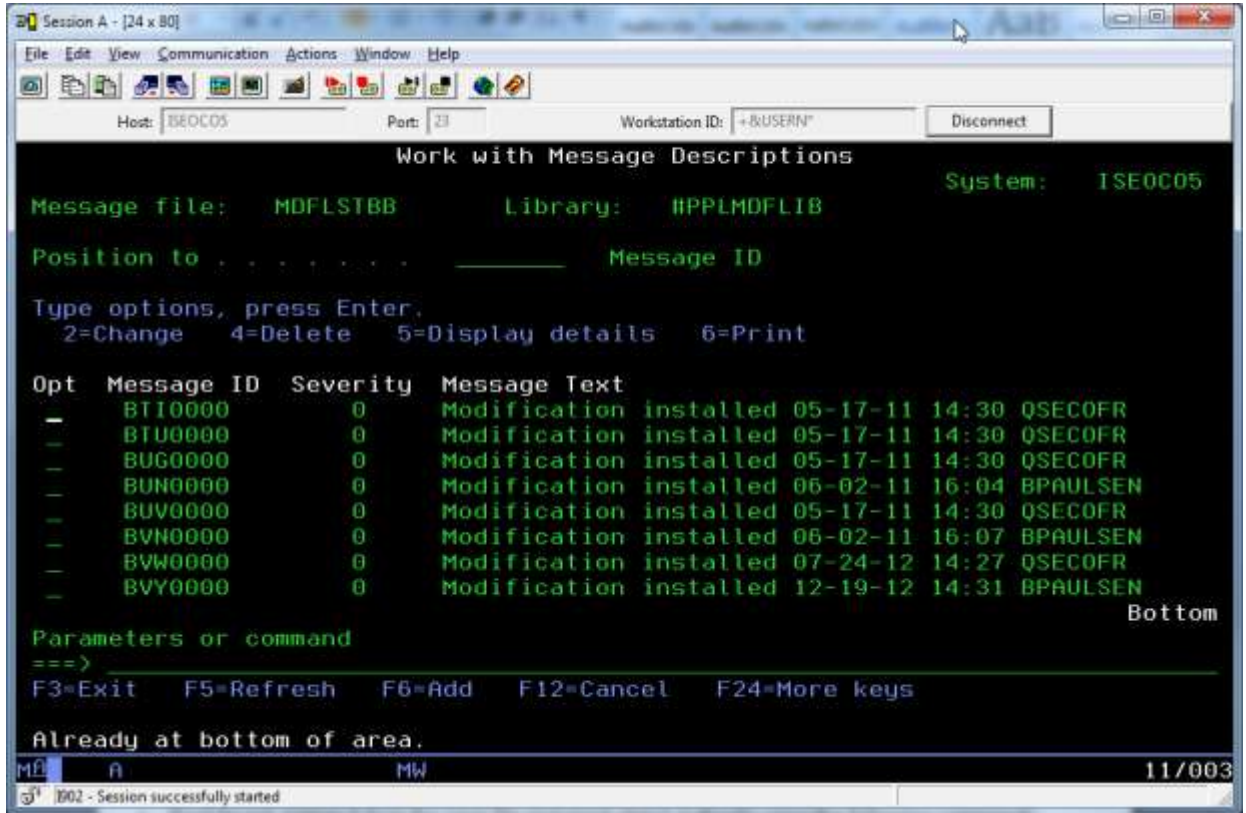
To make sure you are current with all cumulative bundles available for the version of Paper-Less you have installed on your system:

Note: This is not necessary to apply keys, but it is a good time to review new features and fixes available for MDCC.

- On a command line type: `WRKMSGF #PPLMDFLIB/*ALL`
- Enter Option12 next the message file that corresponds to each environment (last two characters of filename):



- Page down to the bottom of the list of message ID's to see the latest bundles applied to the environment.



- Compare this list to what is available on www.paperlessllc.com support. Download and install any missing bundles. Make sure you also download any client updates required for those bundles. See the latest service pack to get everything required for both the iSeries and the PC client software.

Check the Product Definition

- On a command line, type:

WRKOBJ OBJ(QGPL/ISEPRDxy) OBJTYPE(*PRDDFN)

– where x=2 and y = 6, 7, or 8 based on version of MDCC

- If it is not found, restore the definition from the save file and grant object authority using the following commands:
 - RSTOBJ OBJ(ISEPRDxy) SAVLIB(QGPL) DEV(*SAVF) OBJTYPE(*PRDDFN) SAVF(QGPL/ISEPRDRy) RSTLIB(QGPL)
 - GRTOBJAUT OBJ(QGPL/ISEPRDxy) OBJTYPE(*PRDDFN) USER(*PUBLIC) AUT(*ALL) – where x=2 and y = 6, 7, or 8 based on version of MDCC

Product Definitions by Version

ISEPRD28 – MDCC Version 8

ISEPRD27 – MDCC Version 7

ISEPRD26 – MDCC Version 6

Check the Product Definition Message File

- On a command line, type:

WRKOBJ OBJ(QGPL/ISEPRDMSGy) OBJTYPE(*MSGF)

- where y = 6, 7, or 8 based on version of MDCC

- If it is not found, restore it from the save file and grant the object authority with the following commands:
 - RSTOBJ OBJ(ISEPRDMSGy) SAVLIB(QGPL) DEV(*SAVF) OBJTYPE(*MSGF) SAVF(QGPL/ISEPRDRy) RSTLIB(QGPL)
 - GRTOBJAUT OBJ(QGPL/ISEPRDMSGy) OBJTYPE(*MSGF) USER(*PUBLIC) AUT(*ALL) – where x=2 and y = 6, 7, or 8 based on version of MDCC
- If it is found, restore it from the save file to QTEMP and merge the message files using the following commands:
 - RSTOBJ OBJ(ISEPRDMSGy) SAVLIB(QGPL) DEV(*SAVF) OBJTYPE(*MSGF) SAVF(QGPL/ISEPRDRy) RSTLIB(QTEMP)
 - MRGMSGF FROMMSGF(QTEMP/ISEPRDMSGy) TOMSGF(QGPL/ISEPRDMSGy) DLTMSGF MSGF(QTEMP/ISEPRDMSGy) where y = 6, 7, or 8 based on version of MDCC

Add MDCC License Keys

- Print the license key information - Print a copy of the txt documents you received via email from support. There is one file for each of the features licensed. On a command line type:

WRKLICINF and prompt by pressing the F4 key

- Enter the Product ID found in the license key file and press enter
- Type option 1 'Add License key' for the appropriate product feature(s)

Note: Start with feature 5101 enter each feature in numerical order

```

Session A - [24 x 80]
File Edit View Communication Actions Window Help
Host: ISEOC05 Port: 23 Workstation ID: +&USERN* Disconnect
Work with License Information ISEOC05 01/29/13 11:56:53
System serial number . . . . . : 10DFB4P
Processor group . . . . . : P05
Type options, press Enter.
  1=Add license key  2=Change  5=Display detail  6=Print detail
  8=Work with license users ...

  Opt  Product  License Term  Feature  Description
  ---  -
  12  8PLMCST  V2R8  5101  PLMC - Paper-Less Suite
  ---  -
  ---  8PLMCST  V2R8  5102  MDCC - Mfg Data Collection & Communications
  ---  8PLMCST  V2R8  5103  QRMS - Quality Reporting & Mgmt System
  ---  8PLMCST  V2R8  5104  TMPS - Tool Management & Planning System
  ---  8PLMCST  V2R8  5105  ThinAppS
  ---  8PLMCST  V2R8  5106  ATM
  More...

Parameters or command
==>
F3=Exit      F5=Refresh  F11=Display Usage Information  F12=Cancel
F17=Position to  F23=More options
(C) COPYRIGHT IBM CORP. 1980, 2007.
MA  A MW 14/002
B02 - Session successfully started
  
```

- Enter in the following information from the txt document:
 - License Key:
 - Characters 1 – 6 _____
 - Characters 7 – 12 _____
 - Characters 13 – 18 _____
 - Usage Limit: _____
 - Expiration Date: _____ - format is MMDDYY
- '1 license key information records added to repository' after hitting enter indicates the key was successfully added.