

# TECHNICAL SUPPORT

## PUMPTEC PISTON PUMP

Part # C313



<b>C313 Specs</b>	
Part Number	<b>C313</b>
GPM	1.4
Max. PSI	500
Voltage	115V/230V
Motor HP	1/2
Motor RPM	1,725
Motor Amp Draw	5.2 amps @ 115V 2.6 amps @ 230V
Used in	M-3, M-5, and their 230V versions

Part # C322



<b>C322 Specs</b>	
Part Number	<b>C322</b>
GPM	1.18
Max. PSI	250
Voltage	115V
Motor HP	1/7
Motor Amp Draw	1.6 amps @ 230V
Used in	1000DX-200 (pre 2012), 1001DX-200 (pre 2012)

Part # C359B



<b>C359B Specs</b>	
Part Number	<b>C359B</b>
GPM	2.2
Max. PSI	1,200
Voltage	115V/230V
Motor HP	3/4
Motor RPM	1,725
Motor Amp Draw	13.5 amps @ 115V 6.8 amps @ 230V
Used in	M-12, M-16, and RL1200 Breeze

# Repair Kits for Pumptec Pumps

To order repair kits for Pumptec pumps, contact Pumptec or your nearest Pumptec distributor.  
**Mytee does not stock these parts.**

Diagrams for Pumptec's repair kits are shown on the following pages.

## Pumptec Troubleshooting

<b>Problem:</b>	<b>Possible Causes:</b>	<b>Solutions:</b>
No water flow.	Tank is empty.	Fill tank.
	Filter is clogged.	Clean filter.
	Pump valves are clogged or damaged.	Examine valves and clean or replace.
	Pump has lost prime.	Follow priming procedure.
Low pressure.	Nozzle is worn.	Replace nozzle with new one of same size.
	Leak in high pressure hose or connections.	Check hose or connections, replace as needed.
	Filter is clogged.	Clean filter.
	Pump valves are clogged or damaged.	Examine valves and clean or replace.
Pump pulsates when spraying.	Filter is clogged.	Clean filter.
	Pump valves are clogged or damaged.	Examine valves and clean or replace.
Motor does not operate.	Blown circuit breaker.	Replace circuit breaker. Check circuit for wire damage or component damage.
Leaks seen under pump.	Pump seals are worn.	Replace with new plunger and seals.

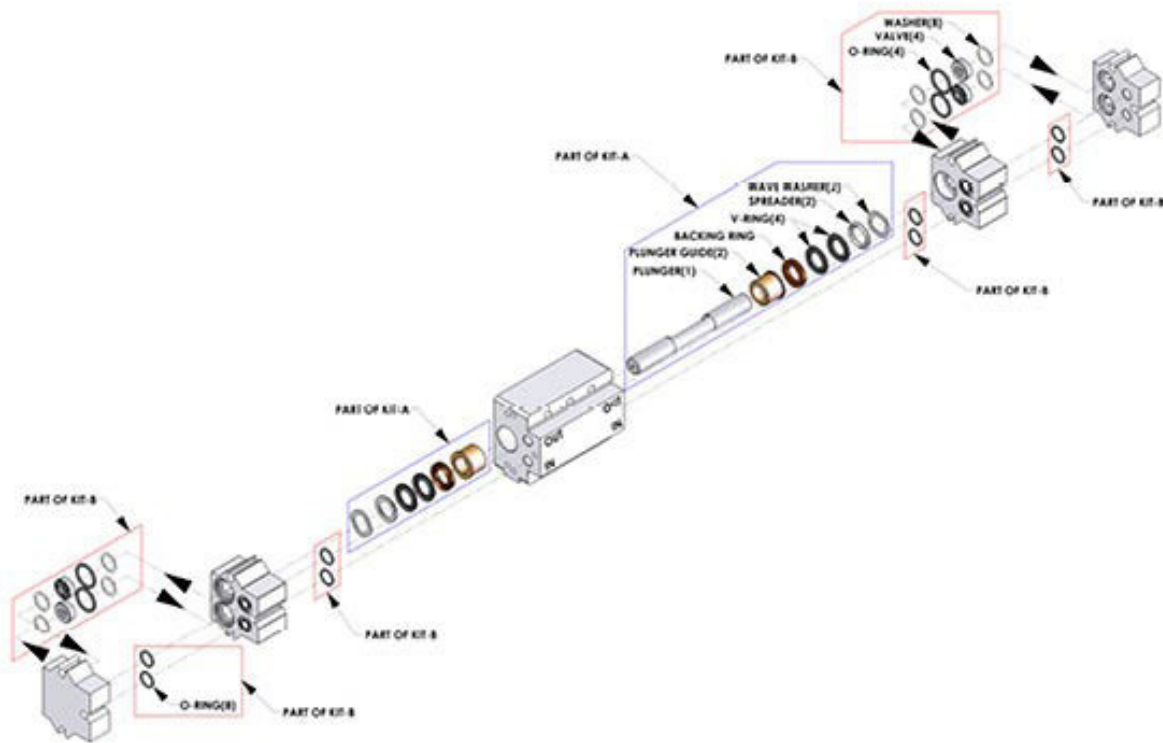
# Pumptec Pump (C313)

Parts listed below can be purchased through Pumptec or one of their distributors.

**Mytee does not stock these parts.**



205V | 207V



DESCRIPTION	PART NO.	QTY	DESCRIPTION	PART NO.	QTY
KIT A, 205V, 207V	10003		KIT B	10022	
Plunger	▲	1	O-Ring, 1-116	▲	1
Plunger Guide	▲	2	Valve	▲	4
Backing Ring	▲	2	White Washer, 1/2" ID	▲	8
V-Ring	▲	4	O-Ring, 1-014	▲	8
Spreader	▲	2	Head	*	2
Wave Washer	▲	2	Stuffing Box	*	2
			Manifold/Crankcase	*	1

(▲) Sold only as part of a kit. | (\*) Not part of a kit, for identification only.

**A COMPLETE VERSION OF THE OWNERS MANUAL IS AVAILABLE  
UNDER THE DOWNLOADABLE DOCUMENTS TAB**

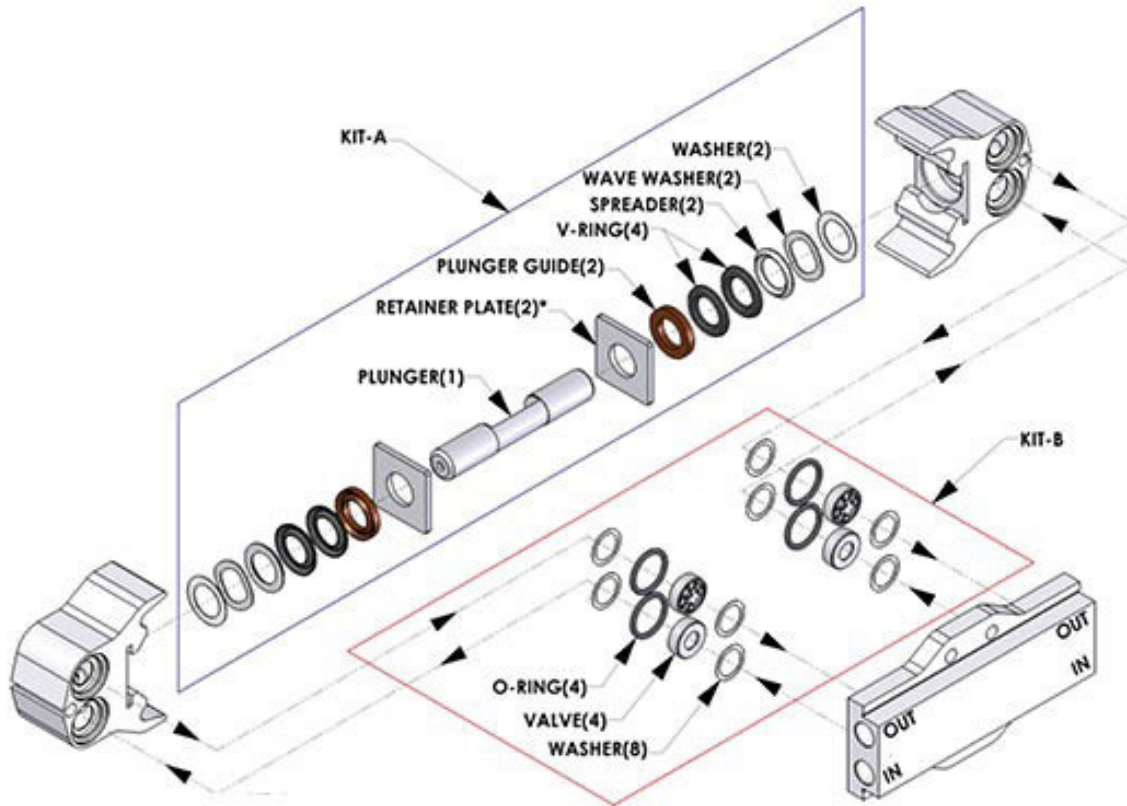
# Pumptec Pump (C322)

Parts listed below can be purchased through Pumptec or one of their distributors.

**Mytee does not stock these parts.**



112V



DESCRIPTION	PART NO.	QTY	DESCRIPTION	PART NO.	QTY
<b>KIT A, 112V</b>	<b>10009</b>		<b>KIT B</b>	<b>10004</b>	
Plunger	▲	1	White Washer, 1/2" ID	▲	8
Backing Ring	▲	2	Valve Assembly	▲	4
V-packing	▲	4	O-Ring, 1-116	▲	4
Spreader	▲	2	Retainer Plate	*	2
WaveWasher	▲	2	Pump Head	*	2
White Washer, 5/8" ID	▲	2	Pump Manifold	*	1

(▲) Sold only as part of a kit. | (\*) Not part of a kit, for identification only.

# Pumptec Pump (C359B)

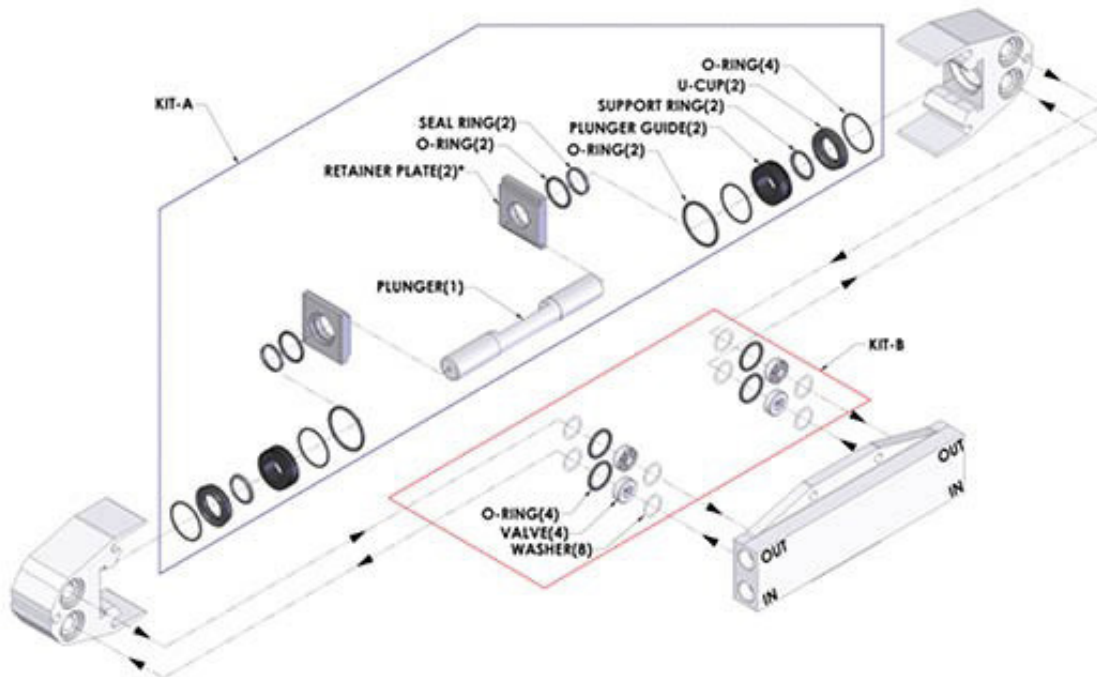
Parts listed below can be purchased through Pumptec or one of their distributors.

**Mytee does not stock these parts.**



ASSEMBLY

348U | 350U | 357U



DESCRIPTION	PART NO.	QTY	DESCRIPTION	PART NO.	QTY
<b>KIT A, 348U, 350U, 357U</b>	<b>10013</b>		<b>KIT B</b>	<b>10004</b>	
Plunger	▲	1	White Washer, 1/2" ID	▲	8
O-Ring, 1-117	▲	2	Valve Assembly	▲	4
Seal Ring, 1-124	▲	2	O-Ring, 1-116	▲	4
Plunger Guide	▲	2	Retainer Plate	*	2
Support Ring, 1-116	▲	4	Pump Head	*	2
U-Cup	▲	2	Pump Manifold	*	1
O-Ring, 1-024	▲	4			

(▲) Sold only as part of a kit. | (\*) Not part of a kit, for identification only.