

TECHNICAL SUPPORT

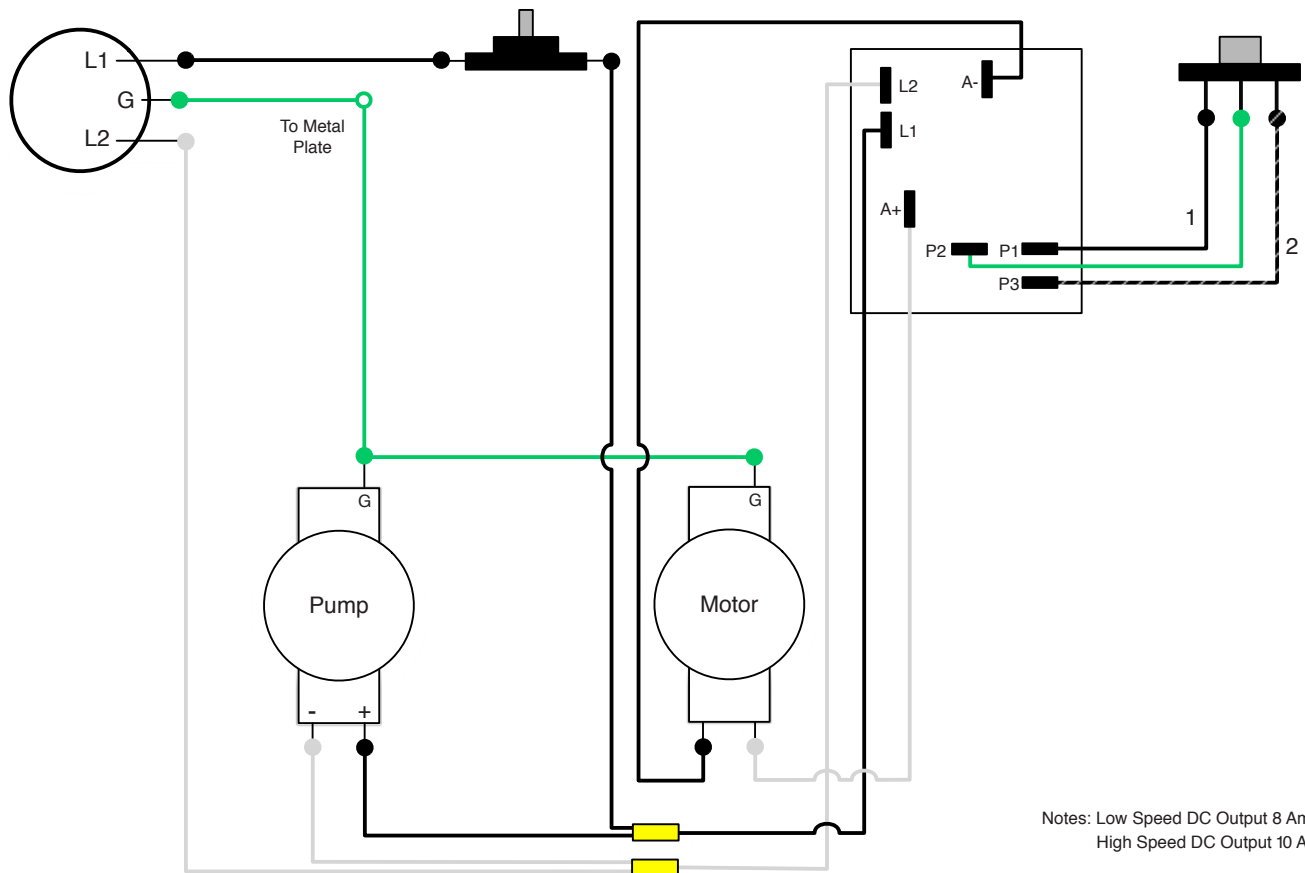
EC-17 ENCAP ELECTRICAL TROUBLESHOOTING

Motor

Motor Specs	
Part #	C326
Motor	Permanent Motor
HP	1.5
RPM	160-320 RPM
Amp Draw	15 amps

IMPORTANT: The motor can only run through the motor control board. Do **NOT** directly connect this motor to a power source without going through the motor control board. The motor will be destroyed.

Wire Schematic



Notes: Low Speed DC Output 8 Amps
High Speed DC Output 10 Amps

Rev. 7-27-2015

Adjusting the Board to Factory Settings

Follow these troubleshooting instructions to ensure your EC-17 is running optimally.

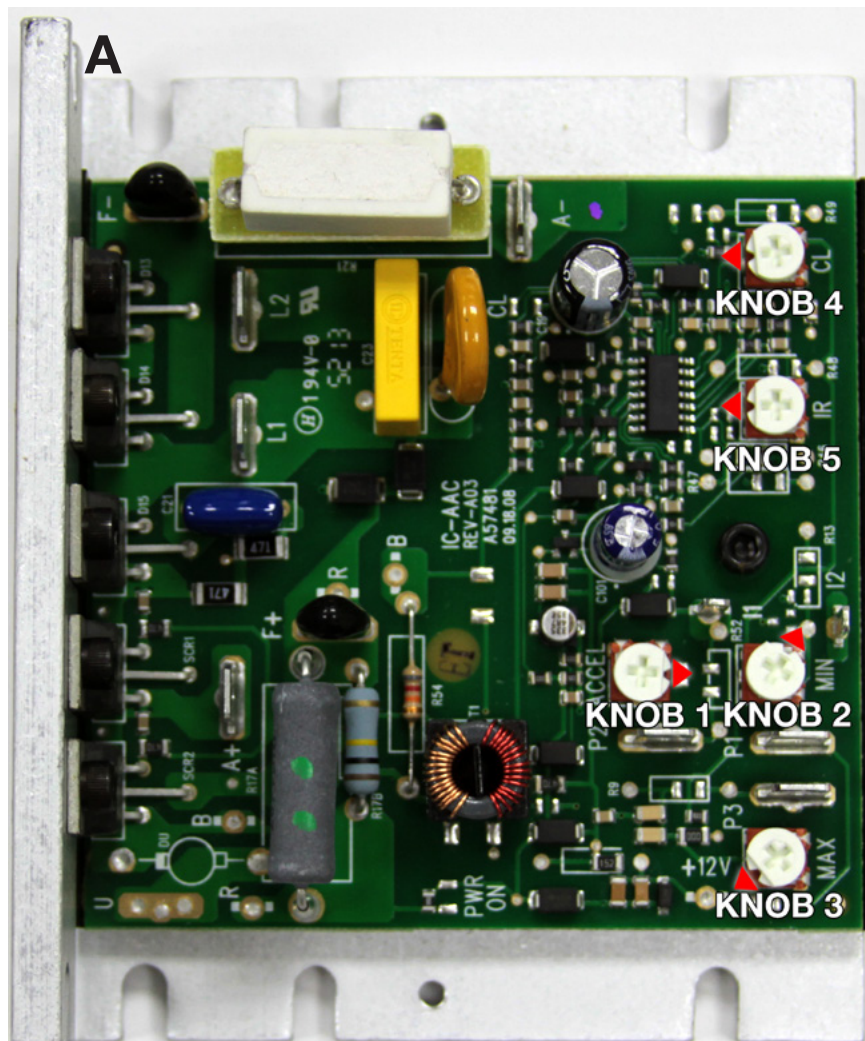
Step 1: Disconnect machine from power and remove motor cover to expose control board.

Step 2: The board should look like the one in **Figure A**. The notches on the knobs should be set to the following positions:

- *Knob 1:* 3 o'clock
- *Knob 2:* 2 o'clock
- *Knob 3:* 8 o'clock
- *Knob 4:* 9 o'clock
- *Knob 5:* 9 o'clock

If your board does not match this, use a Philips screwdriver to adjust the knobs to these settings.

Step 3: Replace motor cover.



[Click here](#) for instructions on replacing the resistor on the speed control board.