



SILO QUICK-START GUIDE

Silo is a secure browser that allows you to use the internet safely. This quick reference user guide introduces you to the initial and standard Silo access; browsing with Silo; printing and user storage. Please see Authentic8's online help for additional information: <https://support.authentic8.com>.

ACCESSING SILO FOR THE FIRST TIME

1. Double-click the Silo icon.
2. Enter your user id (e.g., e-mail address) and click the **Remember me** checkbox, if desired.
3. Click **Launch**.



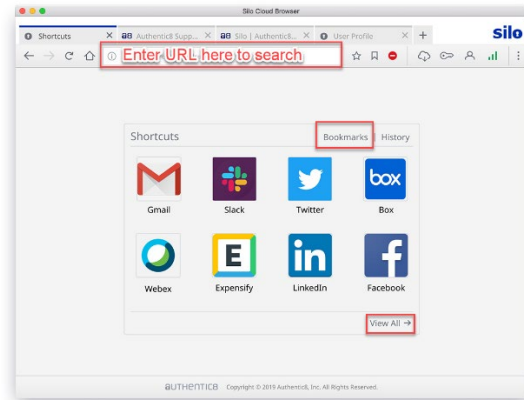
4. Within the Silo PIN screen create a PIN of at least four digits and then click **Enter**. This PIN will be required each time Silo is accessed.
5. Re-enter the new PIN and then click **Enter**. The “re-enter for good measure” field displays a green checkmark for confirmation.
6. Click **Finish**.

STARTING A NEW SILO SESSION

1. Double-click the Silo icon.
2. Enter your User ID (e.g., e-mail address), if it has not been saved via Remember me.
3. Click **Launch**.
4. From the Silo PIN authentication screen, type in the letters that correspond with your numerical PIN.
Note: The letters change with each digit entered.
5. Click Submit when complete.

BROWSING WEBSITES IN SILO

1. Enter an URL to search
2. Click the Bookmarks link to Open your bookmarks manager
3. At the bottom right corner, Click the View All link to see all your shortcuts.
4. To view History, click the History link next to Bookmarks.
5. Click any of your shortcuts buttons to open



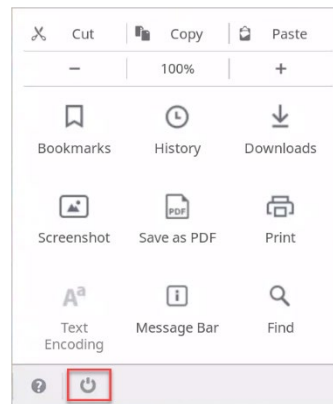
SILO MENU

Click the ellipsis menu, up right corner of toolbar -



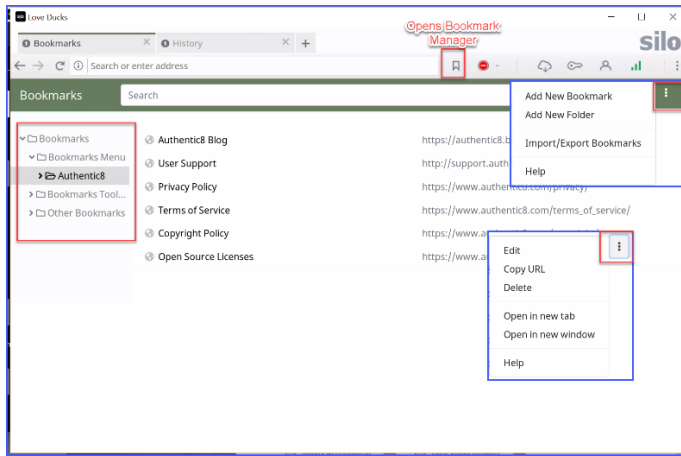
The Silo Menu opens, from here you can:

- Cut, copy, and paste
- Magnify + or -
- Open Bookmarks
- Open History
- Open Downloads
- Take screenshot
- Save as PDF
- Print
- Encode Text
- Display Message Bar
- Find



The button in the red box closes Silo.

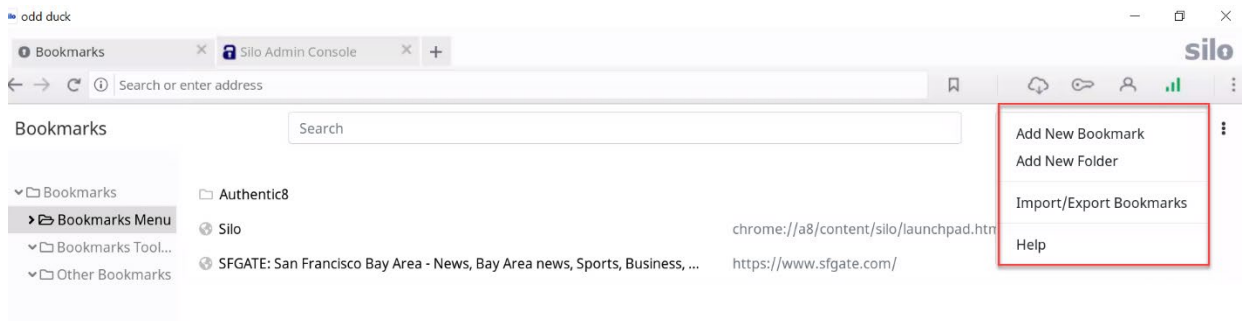
BOOKMARKS: ADDING A BOOKMARK



The bookmark content pane is divided into two sections with a parent-child relationship. The Bookmarks banner inherits the branding key color

- The left pane is used to display the folder structure with n-level of navigation. You can create the tree structures
- When you click a folder on the left, the contents of that folder display in the right pane
- The search bar filters the results on the page when at least one character is provided

BOOKMARKS MANAGER




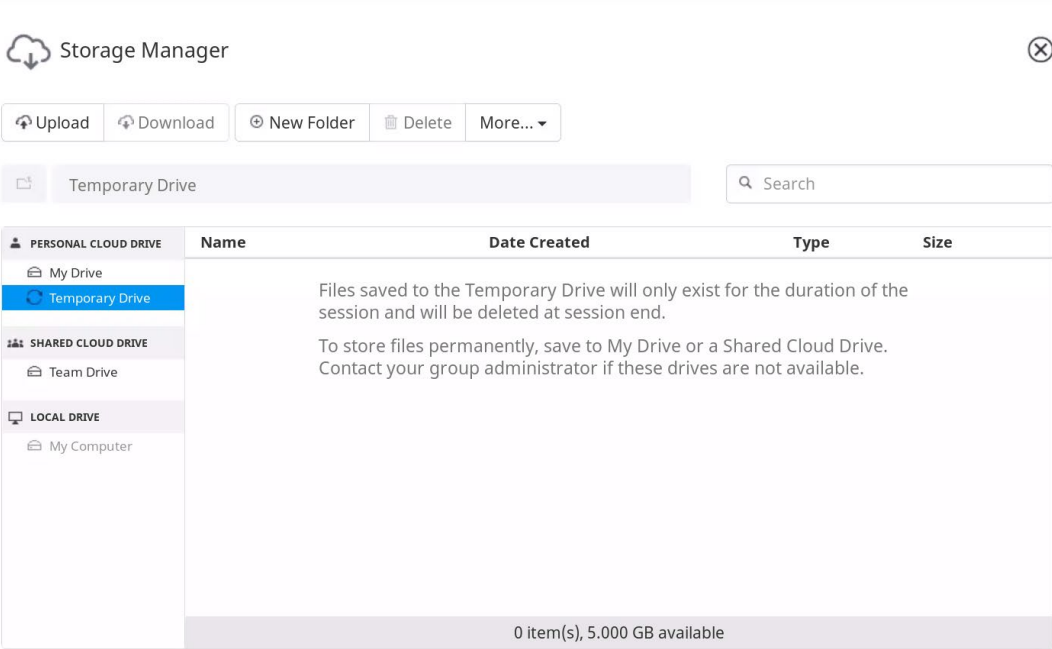
USER STORAGE

Silo makes two different types of storage available: Per User and Temporary.

Per User Storage: Per User storage is permanent storage that is available to a single user and cannot be shared with other users.

Temporary Storage: Temporary storage is a temporary drive that lives for the duration of a session (i.e., anything saved is deleted at session end).

To open the Storage Manager, click this cloud icon  in the Silo Toolbar.

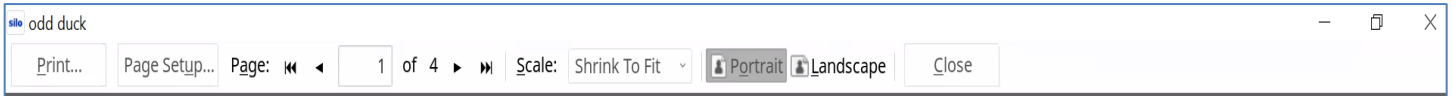


	Name	Date Created	Type	Size
PERSONAL CLOUD DRIVE				
	My Drive			
	Temporary Drive			
SHARED CLOUD DRIVE				
	Team Drive			
LOCAL DRIVE				
	My Computer			

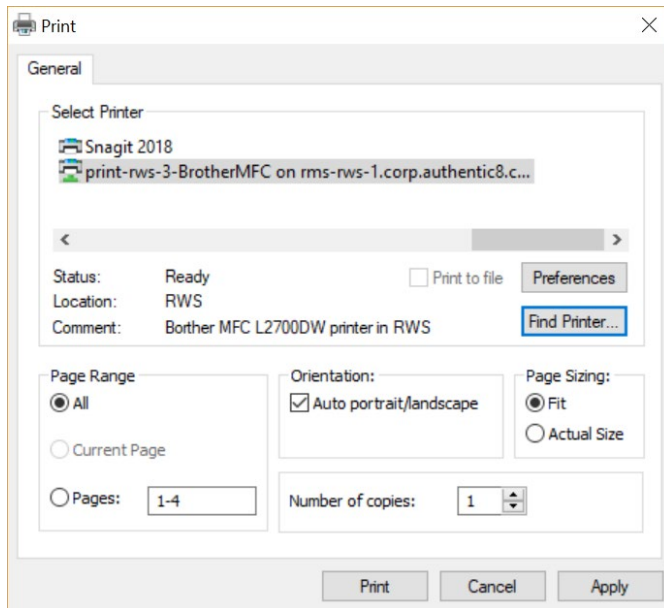
0 item(s), 5.000 GB available

PRINTING

To print within Silo, click-on the menu and select **Print**.



Clicking **Print**, generates a print dialog window to complete the complete the print job. From this print dialog, you can set the basic printing options, like setting the printer and the number of copies.



Standard page setup functionality is also available.