

Office Analyst ConnectKey Lab Exercises

Wireless Network



Wireless Network

Feature Overview

WiFi is a technology that allows an electronic device to exchange data wirelessly (using radio waves) over a computer network. Your Xerox Device can be equipped with an optional Xerox USB 802.11b/g/n (2.4GHz) Wireless Adapter to enable WiFi connectivity. When utilizing this Xerox Device over WiFi it is important to understand the performance impacts that may result from WiFi technology. Compared to a wired Ethernet connection, WiFi performance varies significantly due to many factors that are specific to wireless technology.

Exercise Scenario

Your customer has asked you to install the Xerox wireless network interface on their printer. The hardware has been installed leaving you just the configuration to complete.

Exercise Objective

On completion of this exercise you will be able to:

- Configure the Xerox Wireless feature

Pre-Requisites

The pre-requisites for this lab are as follows:

- Make sure the printer is fully functioning on the network prior to installation.
- Make sure that the TCP/IP and HTTP protocols are configured and enabled on the printer.
- The Xerox Wireless hardware has been installed
- The wireless network login credentials

Connecting to a Wireless Network

In this exercise your printer is already connected to a wired network.

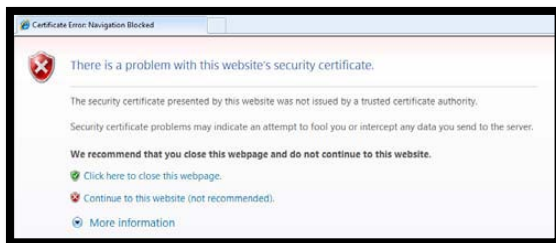
1. In CentreWare Internet Services, click **Properties > Connectivity > Setup**.
2. Next to Xerox[®] Wireless Network Interface, click **Edit**.



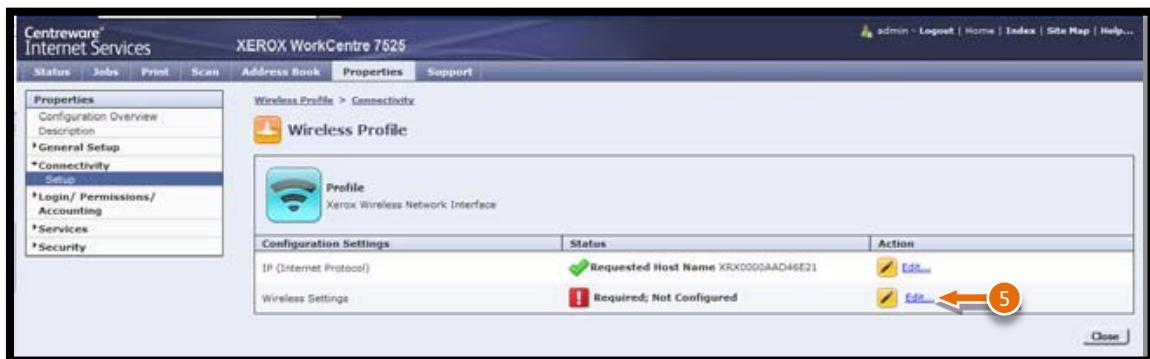
Note: The Edit button is available after you install the Xerox[®] Wireless Network Interface.

Note: For enhanced security, the Xerox device web page is re-directed over https after selecting the Wireless Edit button. Most web browsers will alert you to a potential security issue when the https is first used. You can proceed to the web page and ignore this message.

3. In **Internet Explorer**, you may see this message:

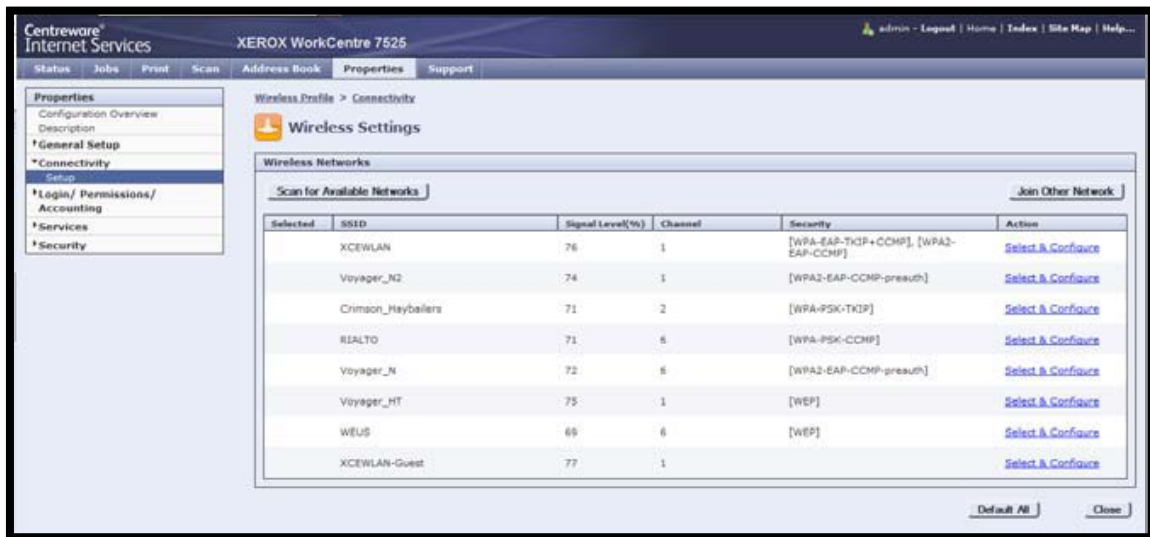


4. Select **Continue to this website**, to proceed to the web page.
5. Click the **Edit** button on the **Wireless Settings** row.



6. On the Wireless Settings page, click **Scan for Available Networks**. A list of detected networks appears.
7. Next to the SSID name of the network you want to join, click **Configure and Select**.

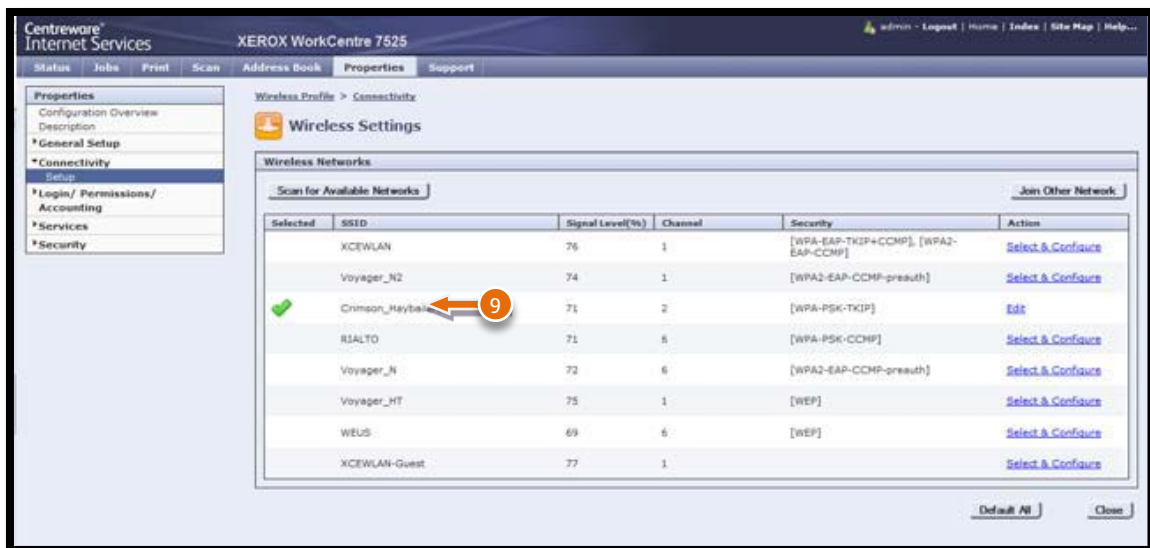
Note: If your network is not found here, go to the System Administrator Guide: Configuring Wireless Settings Manually. Ask your Instructor for information.



8. Complete configuration of the Selected network chosen from the scanned list.
 - The printer detects the Security Mode that your network uses.
 - Configure the security mode settings as needed and click **Save**.

Note: Saving this configuration does not yet enable wireless, nor validate the password for the wireless network.

9. You will see a **Selected** check mark for the SSID of the wireless network you have selected on the Wireless Networks page.



10. Select **Close**

Note: If your wireless network does not automatically assign an IP address, you must then consult the System Administrator Guide: IP to configure your IP settings. When your IP changes are completed, select **Close** from the IP page and return to the Wireless Profile page.

11. Select **Close** from the Wireless Profile page to return back to the Connectivity Setup page.



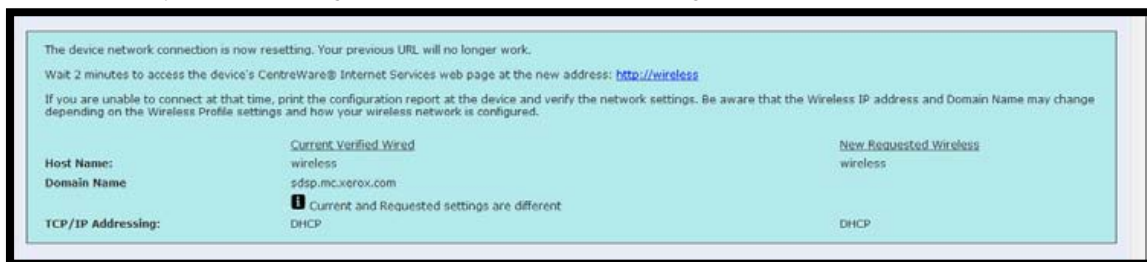
12. Next to Xerox Wireless Network Interface, click the Make Active button.



13. Read the information message and select **Activate Wireless**.



14. At this time, the printer is enabling the wireless interface and disabling the wired interface.



Note: When you switch from a wired connection to a wireless connection, the IP address of the printer will change. You will need to open a new browser session using the newly configured wireless IP address

15. The printer should now be successfully connected to the wireless network.

