

Date Submitted: 10.24.2018

Description: SFC Connect serial connection

Category: Hints & Tips

Brief Description:

Overview on connecting a laptop/computer to an EFOY fuel cell with the SFC Connect Software

Overview

Components required:

Interface Adapter (SFC PN: 151 075 011)

Ethernet CAT5 network cable

USB to Serial Adapter (SFC PN: 151 906 018)

Connect one end of the Ethernet CAT5 cable to the DATA Interface port on the front of the EFOY

Connect the other end of the Ethernet cable to the Interface adapter

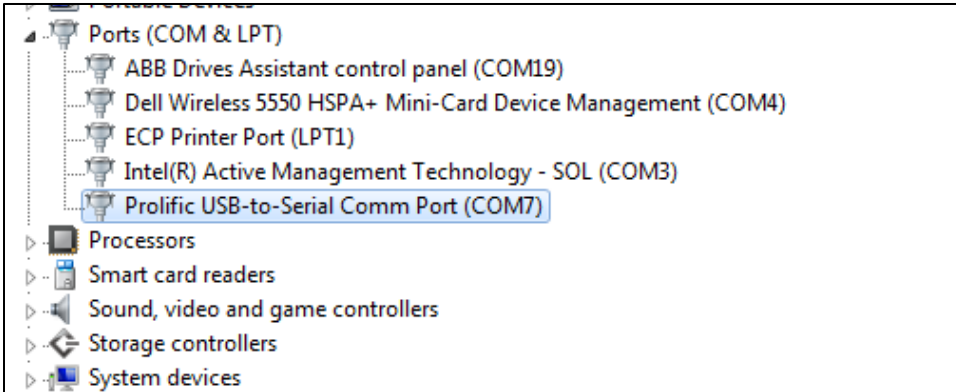
If the computer or laptop being used is equipped with a COM1 serial port (DB9), the adapter can be connected directly.

If a USB connection is only available, then the serial to USB adapter will be required.

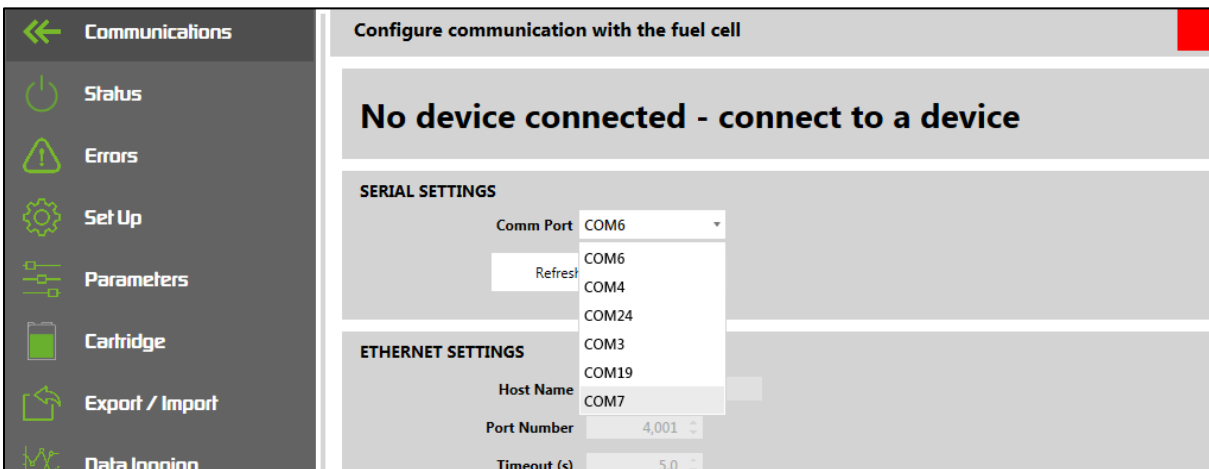


Created by James Cox

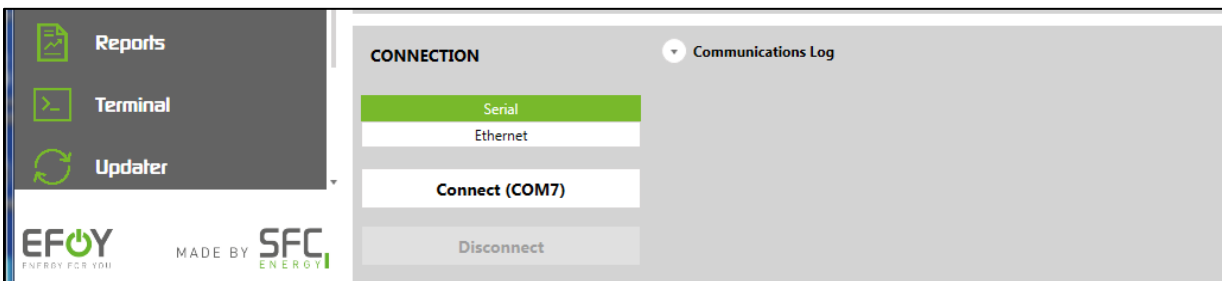
With the USB adapter connected to your computer, open the computer management window & navigate to the device manager. Expand Ports (COM & LPT) to determine which USB port has been designated for the serial adapter (example below)



Open SFC Connect and select the Comm Port in the drop-down list.

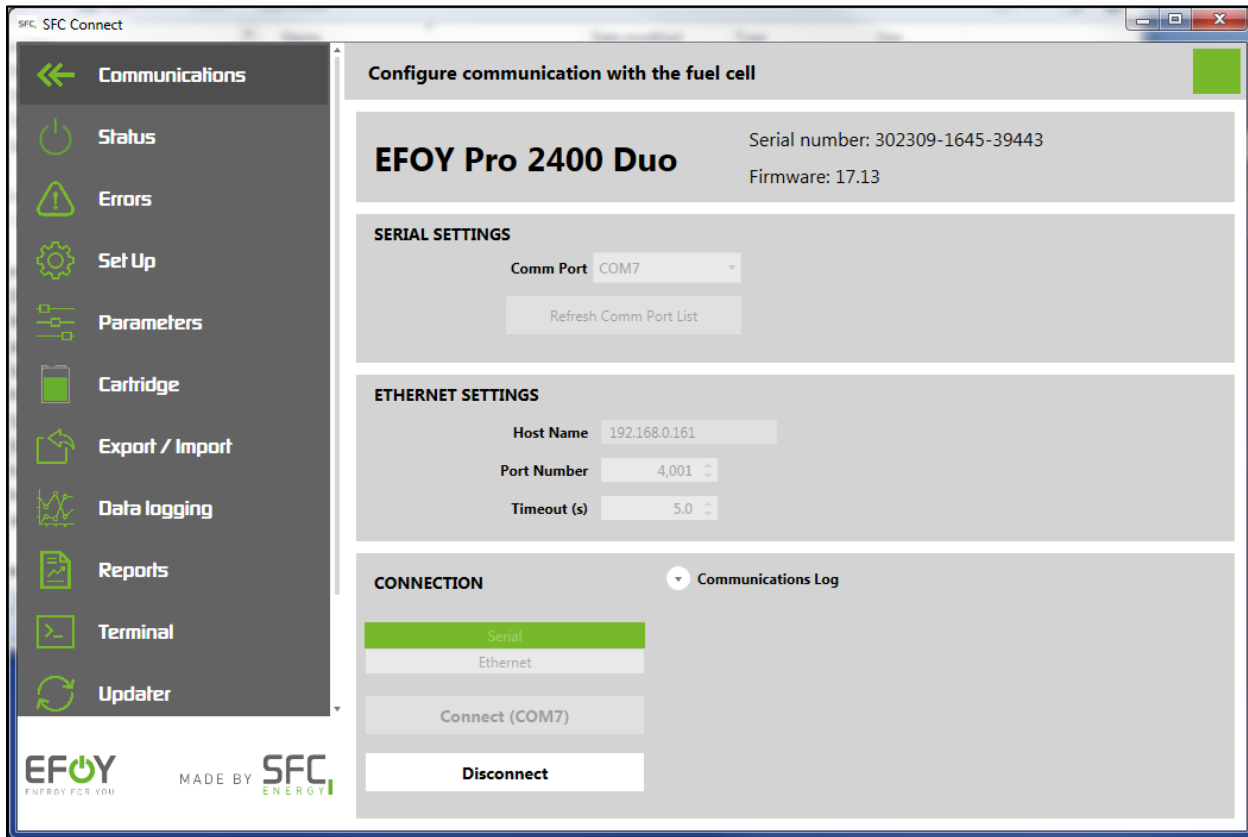


Once the proper port is selected you can complete the connection by clicking on the Connect button (Connect COM7 in the example below).



Created by James Cox

Once connection is made, the status box in the top right corner will turn solid green & the model/serial number will become visible (example below).



SFC Connect Software Download – [CLICK HERE](#)

SFC Connect User Manual – [CLICK HERE](#)