

Submitted By: James Cox **Date Submitted:** 7.18.2018

Description: ACS880 – Creating an EDS File with Drive Composer Pro

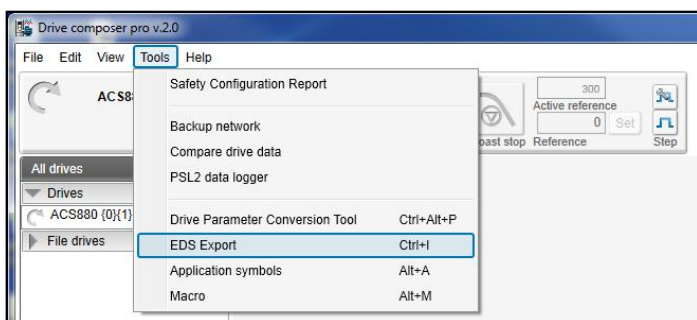
Category: Hints & Tips

Brief Description:

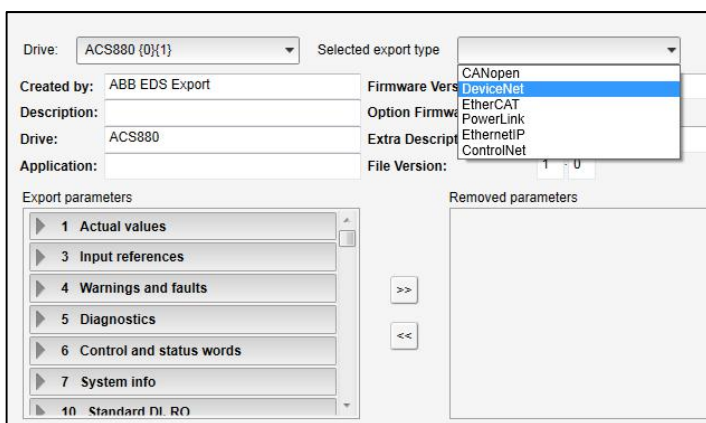
ABB's Drive Composer Pro software contains a function to create a custom EDS file specific for your VFD and application.

Overview

1. Open Drive Composer Pro Software and select EDS Export from the Tools menu



2. Once open, click the drop down for the Selected Export Type for your communication



Created by Service Manager: James Cox

3. The window will populate with data pulled directly from the drive for the Firmware version and drive model.



The screenshot shows a window titled "EDS export window" with a close button. It contains the following fields:

Drive:	ACS880 PCP {0}{1}	Selected export type:	DeviceNet
Created by:	ABB EDS Export	Firmware Version:	v2.80
Description:	ACS880 with FDNA01	Option Firmware Version:	2 148
Drive:	ACS880	Extra Description:	
Application:		File Version:	1 0

4. By default, the Export will contain all drive parameters. These can be modified by using the lower screen to remove parameters from the file.
5. Extra description and application notes can be added, but are not necessary
6. Once complete, press the Export button at the bottom of the page
7. You will be asked to save the files to a location of your choosing.
8. (2) Files will be created automatically with the file names shown below for the ABB Drives profile and the ODVA profile. Note, the files names below are based on the data seen in step 3. The revision numbers will vary depending on your equipment.

ACS880_v2.80_FDNA01_2.148_ABB_Drives_filerev1.0.EDS
ACS880_v2.80_FDNA01_2.148_ODVA_filerev1.0.EDS

Created by Service Manager: James Cox