

ABB Drives			ACS800 HINT Operating Instruction				00595311_A.DOC	
Dept.	Project	Status	Date	Author	Status	Revision	Page	
	ACS800		26.Jun 2009	KIVIMAKI OLLI	APPROVED/NOUSIAINEN TERO	A	1 / 2	

Reseting the fan on-time counter

Background

The drive counts the time the main fan has been running and when the fan's lifetime is near the end the operator is informed that the fan should be replaced.

Fan lifetime warning "REPLACE FAN" is displayed when signal 145.13 FAN ON-TIME is over the limit defined in parameter 145.14 FAN LIFETIME LIM.

After the fan has been replaced the fan counter must be reset to zero to remove the warning from the display.

Required actions/settings

Fan counter resetting can be done with parameter 16.12 RESET COUNTER (FAN ON-TIME) in software versions ASXR7350 and newer.

In software versions ASXR7340 and older the resetting is more difficult; there are three possible ways of resetting the counter:

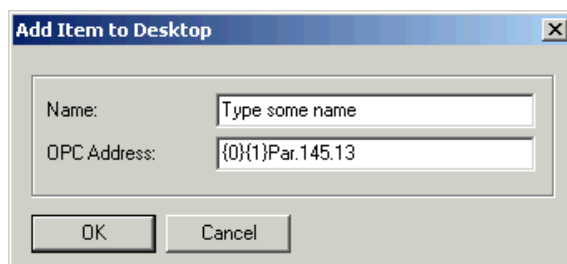
- 1) Using Drive Window Light; connect to the drive using the panel port.
Open the following special parameter file "Reset counter.dwp" and download it to the drive.



Reset counter.dwp

Confirm all messages to continue and answer yes to all possible version difference messages.

- 2) Using Drive Window; connect to the drive using the fiber optic cables.
Add following item to the Drive Window desktop by pressing Ctrl + A (when Drive Window's window is selected active):

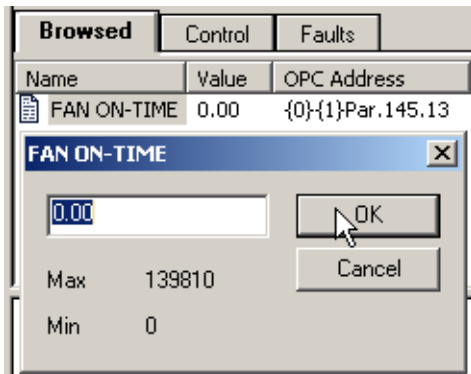


Give a name to the Name: FAN ON-TIME and address exactly as
OPC Address: {0}{1}Par.145.13, where

- the first number {0} is the communication hardware channel (usually 0)
- the second {1} is the CH3 node number (can be seen on drive's parameter 70.02 CHANNEL 3 ADDR).

ABB Drives			ACS800 HINT Operating Instruction				00595311_A.DOC	
Dept.	Project	Status	Date	Author	Status	Revision	Page	
	ACS800		26.Jun 2009	KIVIMAKI OLLI	APPROVED/NOUSIAINEN TERO	A	2 / 2	

Double click the newly created item and write zero to it:



- Using the control panel CDP312 rev G or older (the revision can be seen on the backside of the CDP312 panel as the last letter of the CODE-value); Insert the password 2303 (A) SXR-software) to parameter 16.03 PASS CODE. Scroll to parameter 145.13 FAN ON-TIME and write zero to it by decreasing the value with the fast arrow down – button. This can take upto 35 minutes. REMEMBER TO PRESS ENTER AT THE END.

Known limitations and problem solving

FAN ON-TIME counter value is saved to the RMIO FLASH-memory every 30 minutes (cyclical saving) and also during RMIO power-down (power-fail saving).

It is recommended that after resetting the FAN ON-TIME counter the saving of the new value is verified by powering down the RMIO-board using the following instructions:

- If the RMIO is internally powered the AC-supply of the drive is disconnected for several minutes.
- If the RMIO is externally powered the external +24V supply is disconnected for one minute.

The power-fail saving has failed if the FAN ON-TIME counter value changes back to previous (pre-reset) value after power-up, in this case the resetting must be done again and then the user must wait atleast 30 minutes for the cyclical saving to be done.

The rare cases where the power-fail saving can fail require that the RMIO is externally powered (+24V) and there are many option modules and/or a heavy I/O load connected to the RMIO-board. In these cases the best solution is to wait for the cyclical saving period (30 minutes) to ensure that the values are saved correctly.