

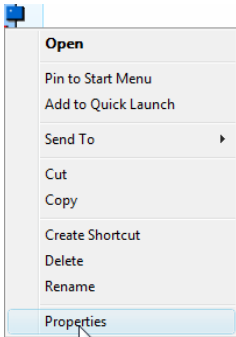
# Quick Reference – Using Command Line Arguments to override ini filename and/or location.

## Using Command Line Arguments with ESOPT to change the INI file location

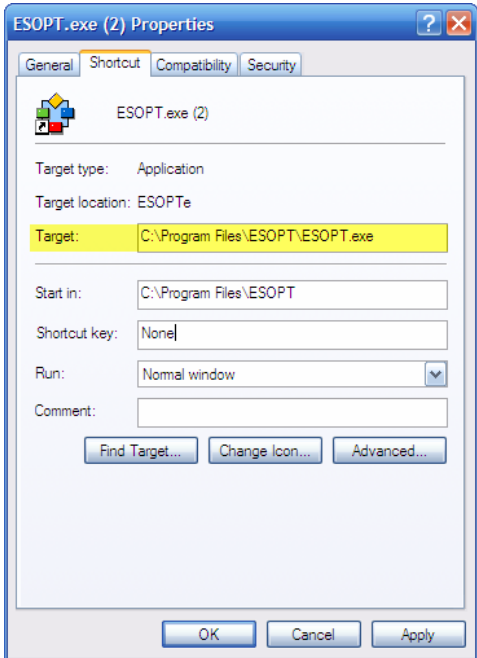
This document describes how to setup the ESOPT.exe file with a command line argument that will override the location of the INI file. The INI file contains 1) information about the database the user will initially be connected to and 2) databases that the user may switch to from within the application.

The ESOPT.exe program has the ability to accept a command line argument that will define the location of the INI file and override the default location. The default location is the Application Path (location of the ESOPT.exe file). This may be useful in a Terminal Services installation where security restricts the user from accessing the Application Path. The steps below describe adding the INI command line argument.

1. On the Windows desktop and locate ESOPT Shortcut Icon.



2. Right mouse click on the Icon and select Properties
3. Click on the Shortcut tab and locate the Target destination.



4. Modify the Target from:  
C:\Program Files\ESOPT\ESOPT.exe  
To:  
C:\Program Files\ESOPT\ESOPT.exe /i=filename  
Example: /i=C:\Program Files\ESOPTProduction.ini

5. **Format**  
The format for the INI path command line parameter is /i=filename

Parameters  
filename  
A valid path and filename.