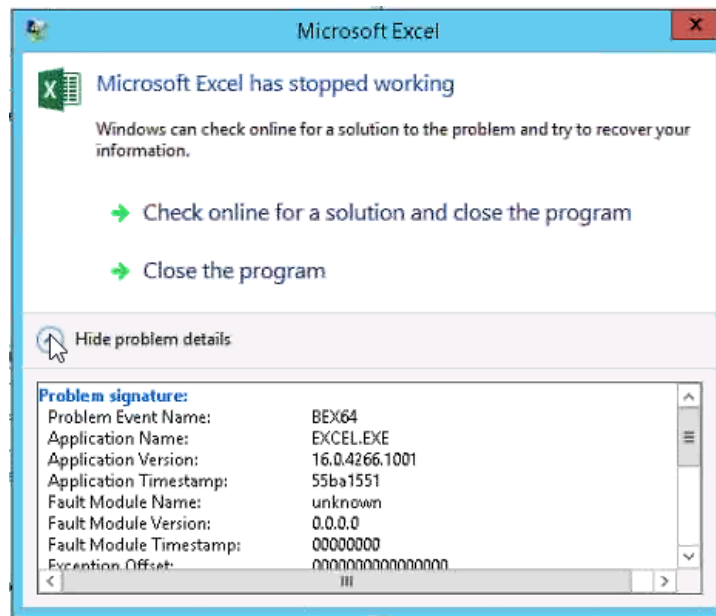
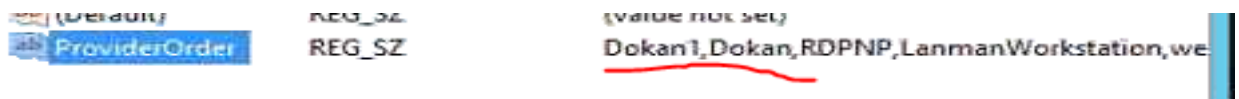


For the Microsoft Excel crash with following error, please follow the steps provided:

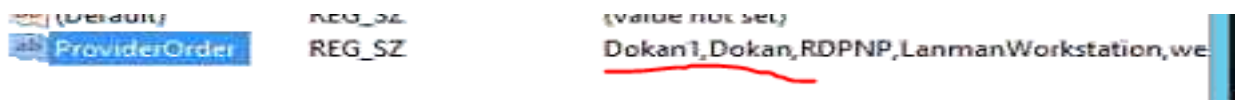


- 1) Go to run command > regedit
- 2) Then go to
Computer\HKEY_LOCAL_MACHINE\SYSTEM\ControlSet001\Control\NetworkProvider\HwOrder



Remove entries “Dokan1” and “Dokan” from there.

- 3) Then go to
Computer\HKEY_LOCAL_MACHINE\SYSTEM\ControlSet001\Control\NetworkProvider\Order



Remove entries “Dokan1” and “Dokan” from here too.

- 4) Now in “Run” perform a “gpupdate /force”.
- 5) Check launching the Excel application again, the issue gets resolved.