

# SEP Policy and configuration document

## Index

1.	Policy Management .....	2
1.1.	Policy Configuration .....	2
1.1.1.	Redirection Policy .....	2
1.2.	Add Policy .....	3
2.	SEP License Info Management .....	10
2.1.	SEP License Info Management .....	10
2.1.1.	User Interface .....	10

# 1. Policy Management:

This document will help you in configuring SEP policy on Sep servers. Policy is effect only to object in a DC server

## 1.1. Policy Configuration

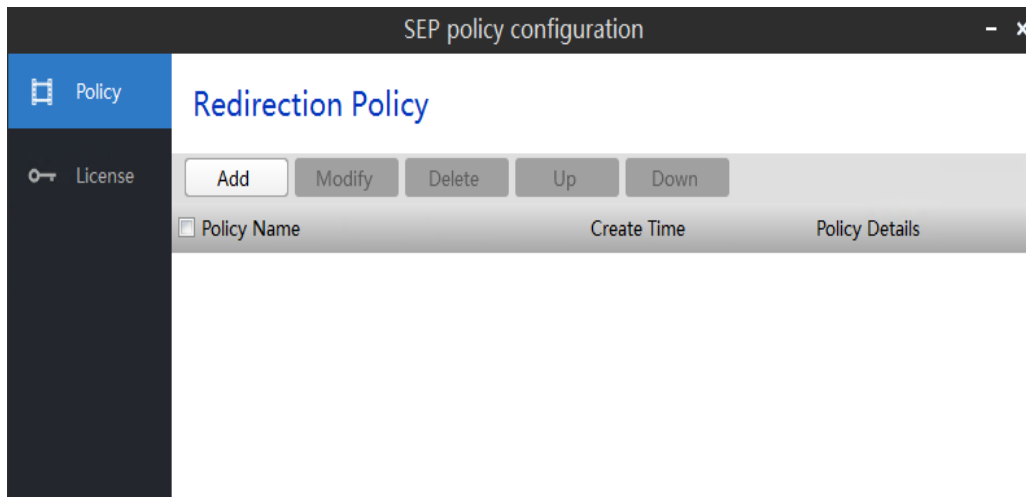


Figure 1: Redirection Policy Page

### 1.1.1. Redirection Policy:

In redirection policy section following option display

1. Add: Click "Add" to add a redirection policy
2. Modify: Select a policy, click "Modify" to modify a polity
3. Delete: Select a policy, click "Delete" to remove it
4. View: Click "View" to view details of policy
5. Up/Down: Choose a policy, click "Up" or "Down" can setup priority to policy, policy on the top is given highest priority.

## 1.1. Add Policy

To be create USB block policy on remote session please following below step

- i. Click on Add button and input policy name and select enable button for USB All items are “Not Configured” by default, Disk Can be “Enabled; also can be “Automatic redirection” or “Read Only” in Advanced..

Device Type	Not Configured	Enabled	Disabled
Policy Name:	USBBlocked		
USB:	<input checked="" type="radio"/>	<input type="radio"/>	<input type="radio"/>
Disk:	<input checked="" type="radio"/>	<input type="radio"/>	<input type="radio"/>
Printer:	<input checked="" type="radio"/>	<input type="radio"/>	<input type="radio"/>
Serial&Parallel:	<input checked="" type="radio"/>	<input type="radio"/>	<input type="radio"/>
Webcam:	<input checked="" type="radio"/>	<input type="radio"/>	<input type="radio"/>
Scanner:	<input checked="" type="radio"/>	<input type="radio"/>	<input type="radio"/>
MMR:	<input checked="" type="radio"/>	<input type="radio"/>	<input type="radio"/>

Figure 2: Add policy page

- ii. Click on Advance tab Advance configuration section open in this section have two tab one is USB and other is Disk. Disk Can be “Enabled; also can be “Automatic redirection” or “Read Only” in Advanced.

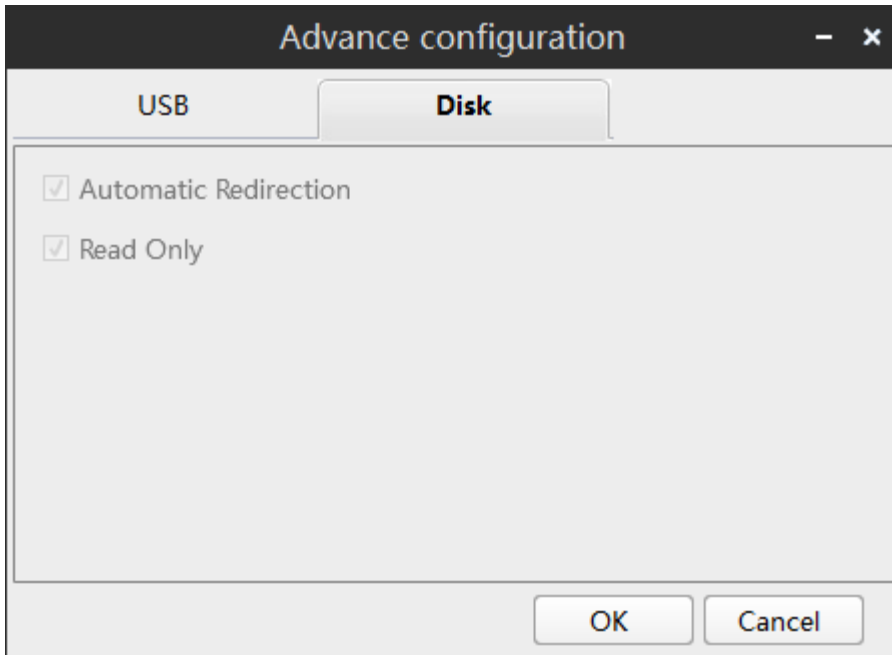


Figure 3: Advance Configuration Disk Page

- iii. USB Can is configured to "Blacklist" or "White list" in Advance. When status is "Enabled"  
In list mode two options appear Black list or white list. If you have block devices on remote session that devices under in black list section

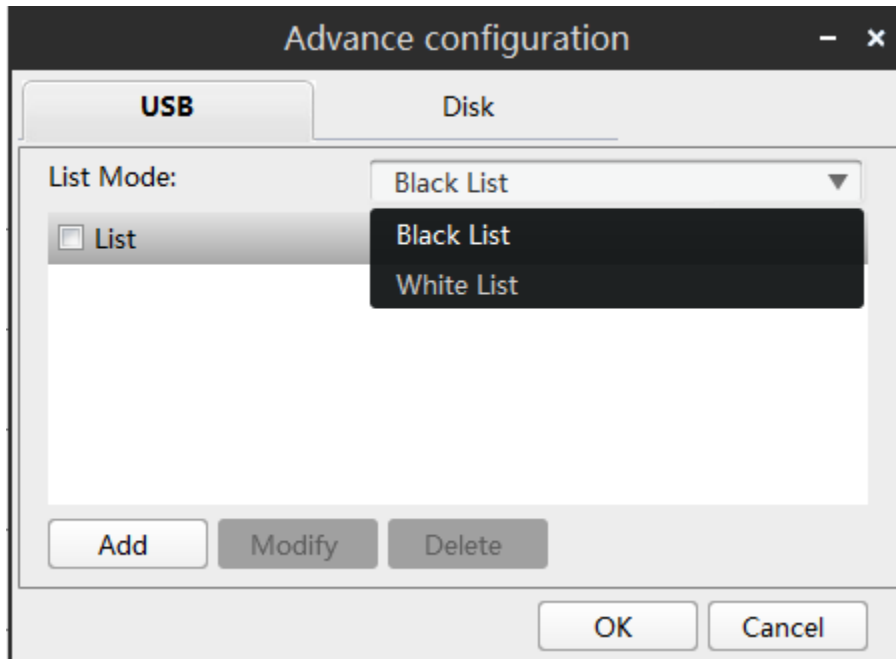


Figure4: Advance Configuration USB Page

iv. In Device list section two options Class device and Own define option display.

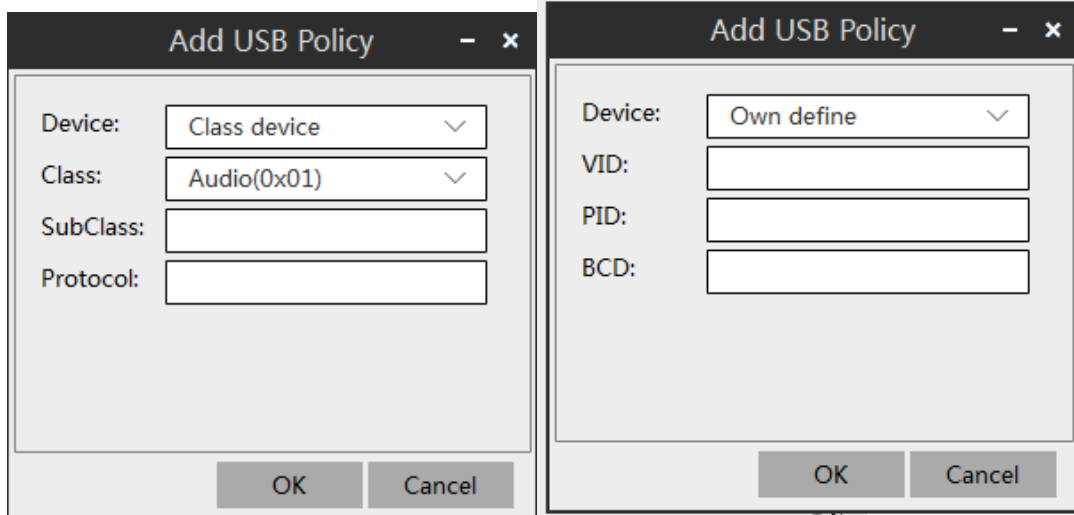


Figure 5A: Add USB policy Page

Figure5B: Add USB Policy Own define page

**Own Define:** Class, Subclass, Protocol, VID, PID and BCD should comply with below rules  
Hex 0Xxxxxxx (4 bits more after 0X) or decimal xxxx (4bit) .

**Class:** In Class dropdown list following option appear it's predefine option

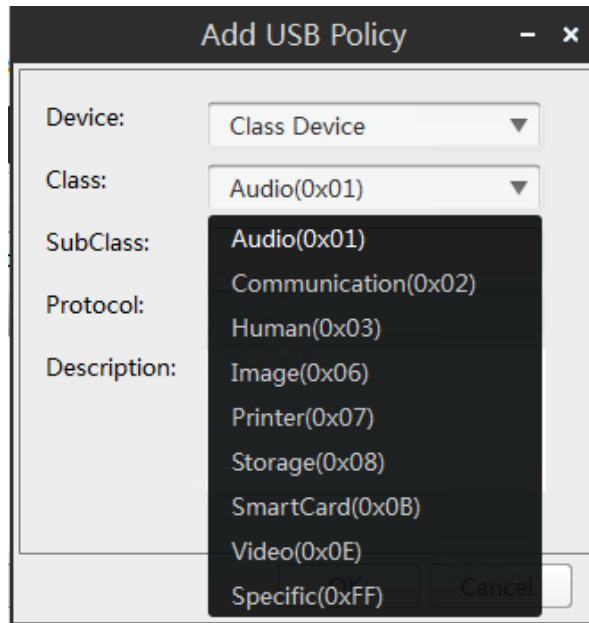


Figure 6: Class item list

- v. In Class section display all predefine list if admin applied USB device, printer blocked policy on Sep server. Select Storage option and click ok button again click on add button and select printer click on ok button.

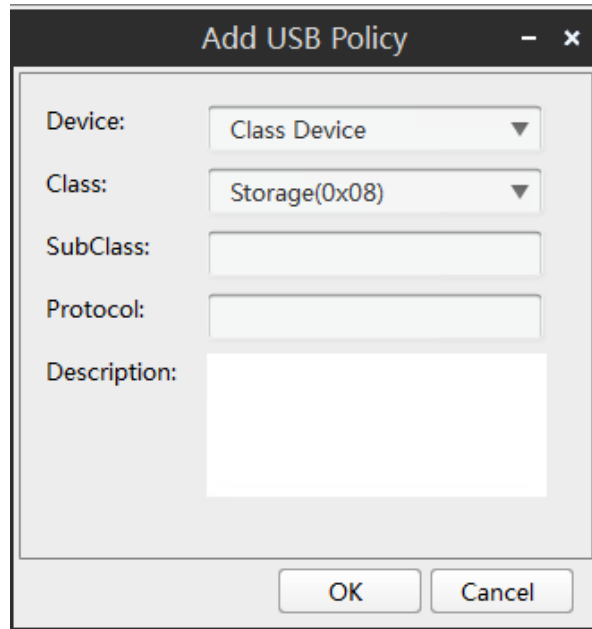


Figure7

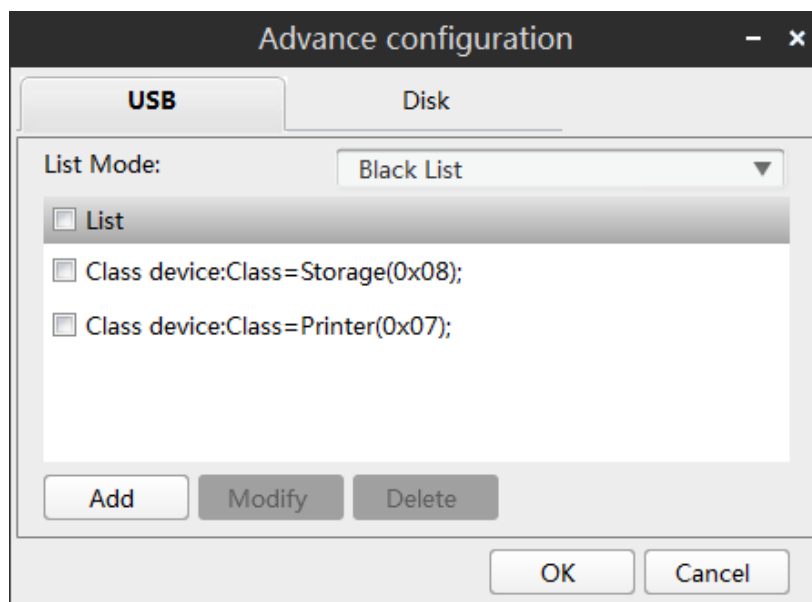


Figure 8

Figure :

- vi. Click on OK button and click on Next button after policy configured to choose effective object. When host is joining to a domain, administrator can select objects to apply in menu or fill in effective object manually. Effective object and exception object are shown in menu, which can be added for policy configuration by click "Add"

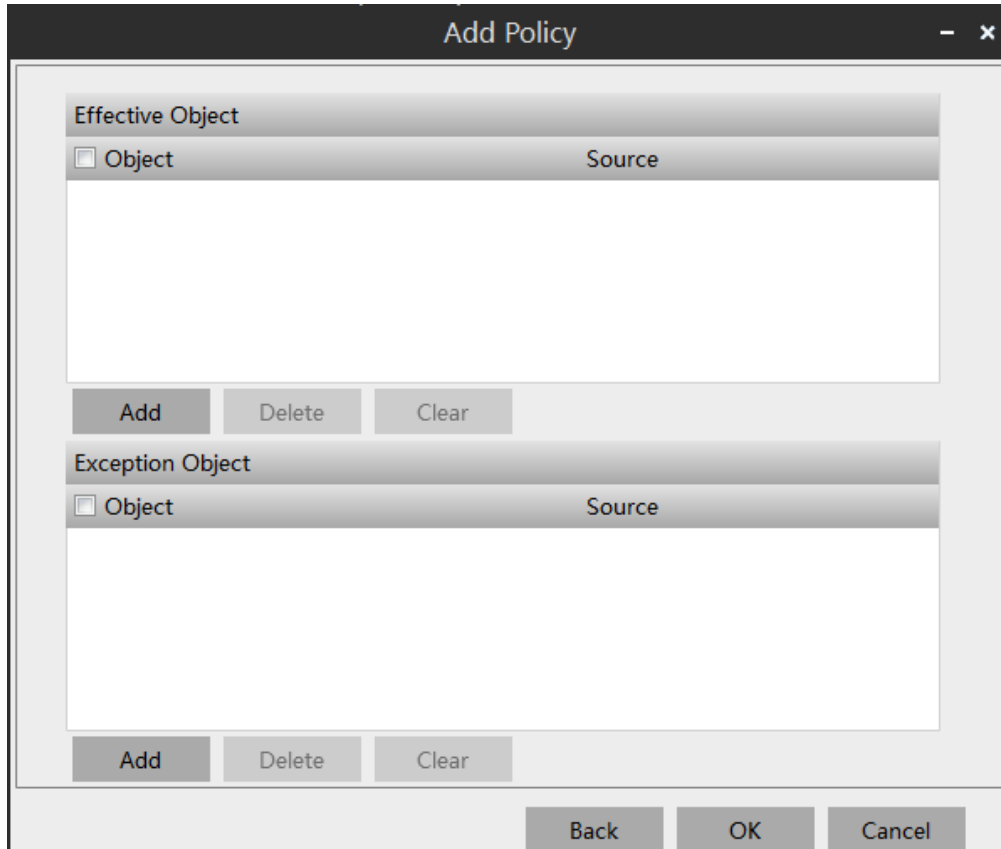


Figure : 9

vii. Effective Object can be added in following figures. You can add OU, Group and particular user.

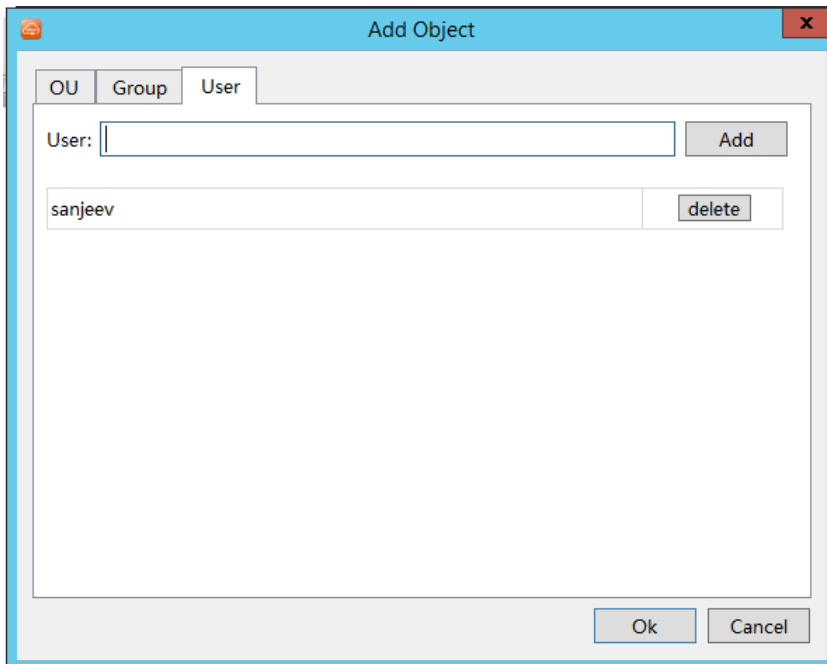
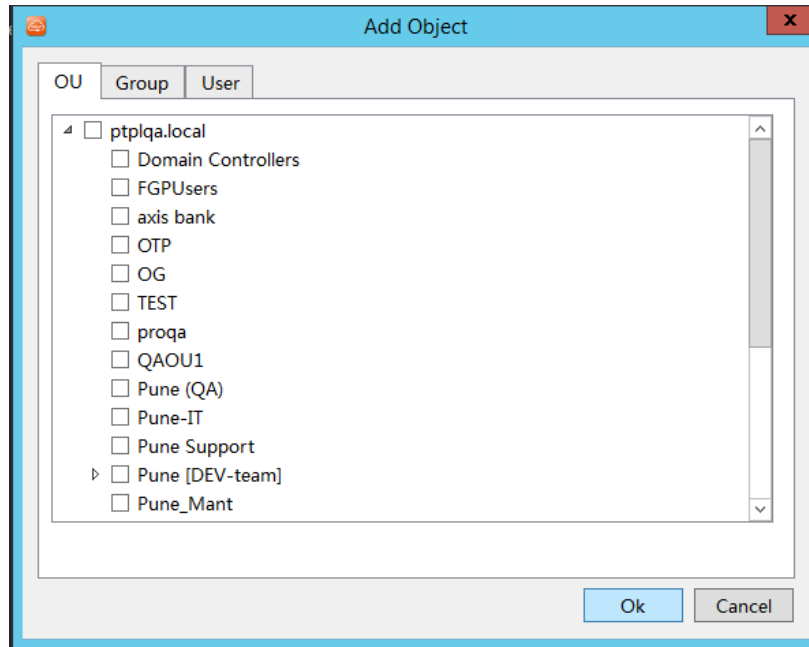


Figure 10



viii. Search user name select user and click on ok button

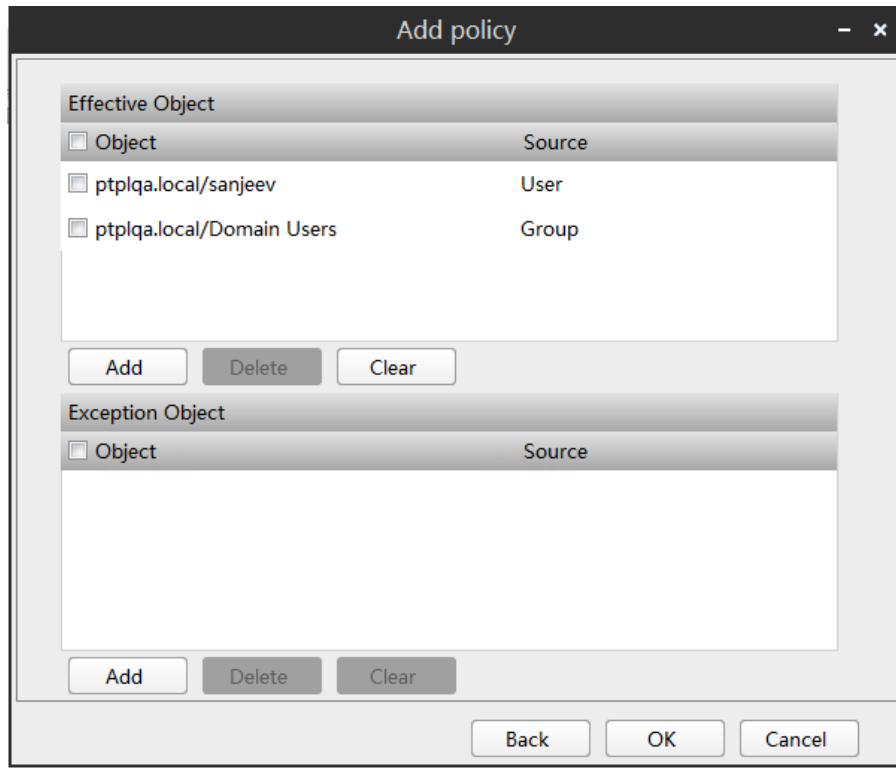


Figure 11

ix. Exception Object can be added in following figures.

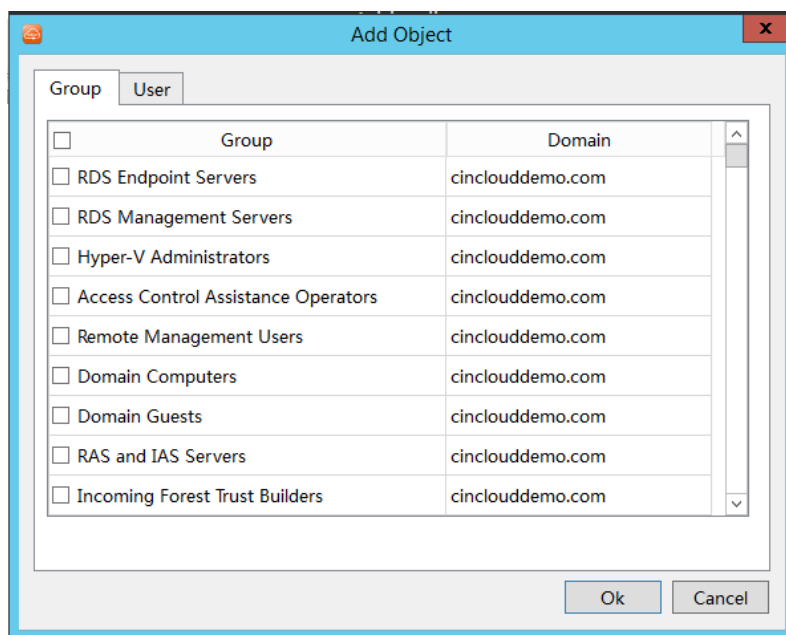
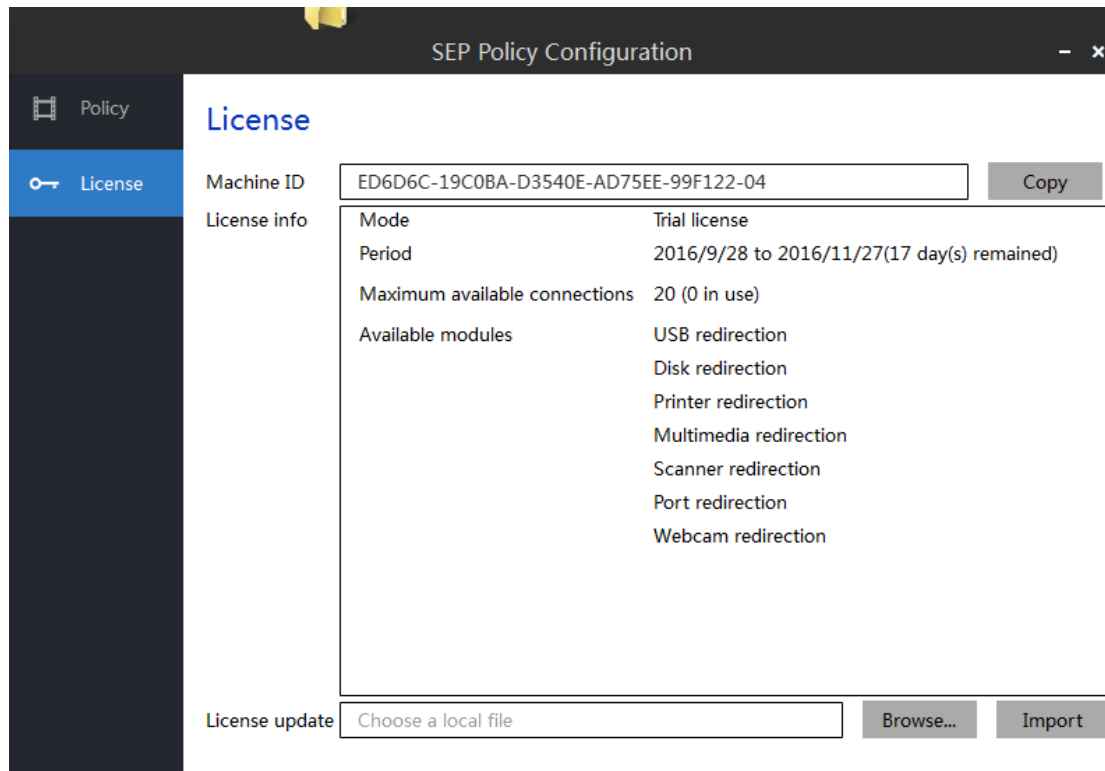


Figure : 12

## 2. SEP License Info Management

### 2.1. SEP License Info Management



#### 2.1.1. User Interface

1. This UI only is to display license information, but not have edit function involved.
2. Click to "Browse.." to choose license file
3. Click "Import" , to import license file.
4. The authorization information shall be updated after communication in success
5. License can be applied by machine ID.