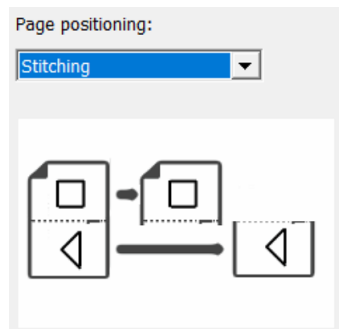


DuraLink R3 Cheat Sheet

v1.0 27th April 2021

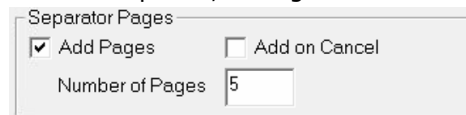
Swap between stitching and transactional systems

Server, Manage Workflow Actions..., Page Filter Action, Configure Select Stitching, Slit and Merge, or Multi Stream



Add blank separator pages between jobs

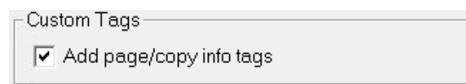
DuraLink Spooler, Configure...



Add custom tags with copy and page numbers

DuraLink Spooler, Configure...

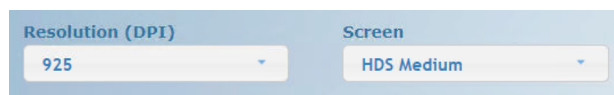
These will be displayed by the PCS as the job is printed.



Set base screen pattern and resolution

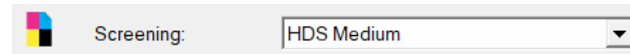
Launch Navigator Configurations Editor via 'NCE' shortcut in User Resources\Xitron Shortcuts

Select on DuraLink tab:



Override screen pattern

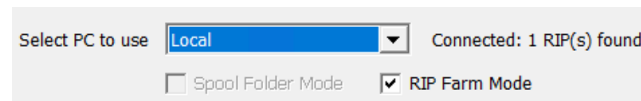
Navigator Client, Enter Workflow Editor, Render Action



Enable RIP Farm mode

Navigator Server, Server Setup → Manage Workflow Actions... Render Action, Configure...

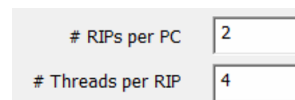
Unless this is checked, only one RIP will be used.



Set number of RIPs and threads

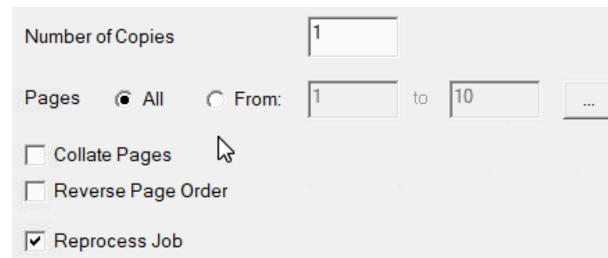
Navigator Server, Server Setup → Manage Devices...

Select DuraLink v2 device.



Set job options: page range, multiple copies, collate

Navigator Client, right-click job. Output Options...



Set job rotation before splitting

Navigator Client, Enter Workflow Editor, Page Filter Action

