



Release Notes

ZingHR Web Application

Attribute Version 9.0

Table of Contents

Features 3

ELC 3

Features

This release aims at making the end user self-sufficient to configure the system as needed and seamlessly use the features & functionalities. It focuses on the end user experience for ease of usage and simplicity in work flows.

These features have been tested on the following browsers.

- GoogleChrome
- MozillaFirefox

ELC:

Clearance Master - As we have come up with a feature extension for clearance workflow. This will enhance the ongoing approval process of checklist clearance.

Previously when any new checklist item is added in system **or** changes done in checklist approver then the transactions which were in process was not used to get impact of modifications done.

Now if any modifications are made in clearance master then we can set the impact/effect based on current transaction **or** future transactions.

The only difference is as below :

For Attribute Wise Checklist Mapping, we can add/update/re-configure the checklist item and also Add/Remove the approver with respect to the effect of current transaction **or** future transactions.

For One to One Checklist Mapping, we only have the provision to add/update/re-configure checklist items which will be in effect based on setup condition i.e. current transaction **or** future transactions.

Also in addition to above feature, there is one more sub feature which brings the smoothness in process follow.

If attribute changes are done in **Attribute Wise Checklist Mapping setup**, while the checklist clearance transactions are in process then based on selected attribute if mapping is available against employee then the newly got assigned approver will take the action against the clearance else if attribute mapping is not available then previously assigned approver will have the provision to take the action.

E.g. If previously, Clearance Master Setup is kept on Company Attribute while transaction is in process with the Approver A.

Now same is changed to Location attribute by setting the Approver as B. Then system will check for the attribute is mapped to an employee or not. If system finds the attribute against the employee then checklist will be reflected in Approver B's bucket. Else it will be pending with Approver A only to take the action.

Attribute Wise Checklist Mapping setup

Clearance Master

Mapping of checklist approvers: Attribute wise One to One [Save Mapping Type](#)

Mapping of checklist initiation By: By Manager By Days

Checklist starts post approval by stage: [Checklist Approval Initiation](#)

Applicable For

Include Current Transactions Future Transactions

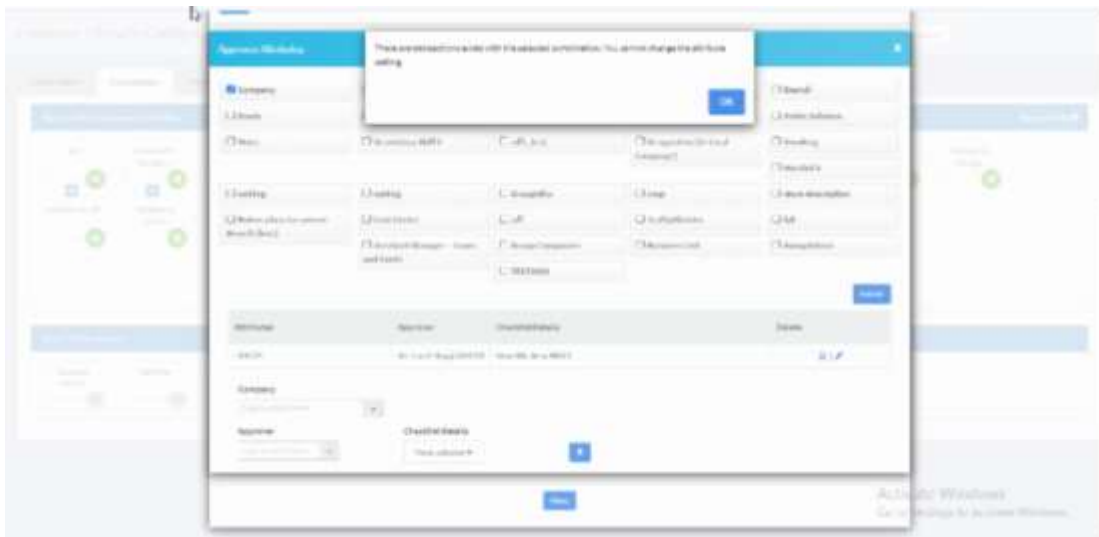
1.Include Current Transactions :-Any Add/update in the Checklist item or change in the attribute level configuration on which the checklist item is configured or deletion of the current checklist item or change in the checklist approver will get applied for the current transaction which are not been approved or rejected at any level.

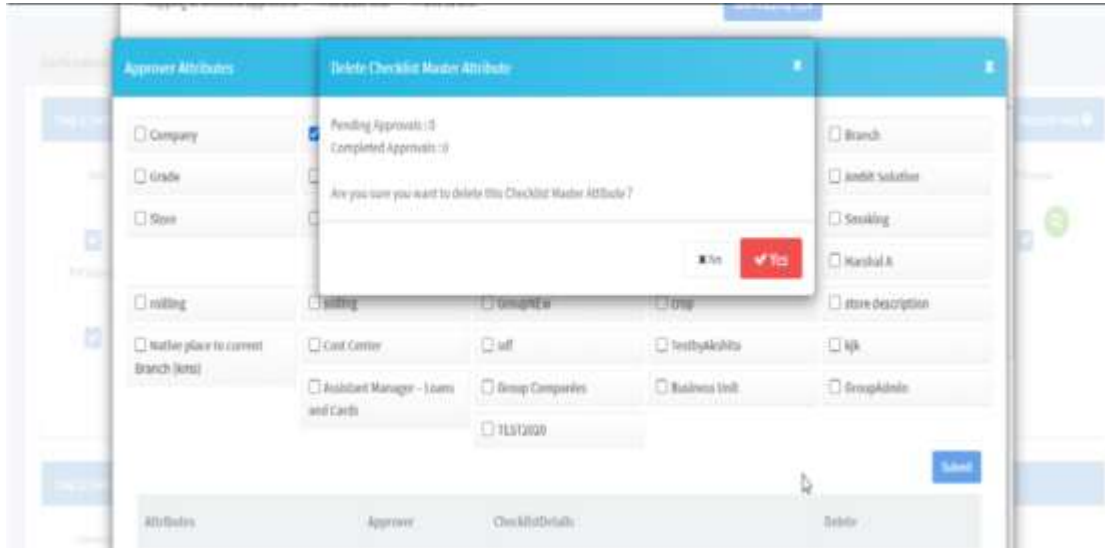
2.Future Transactions:- Any Add/update in the Checklist item or change in the attribute level configuration on which the checklist item is configured or deletion of the current checklist item or change in the checklist approver will get applied for the future transactions. Future date is any resignation that will be applied from today.

[Save](#)

Checklist Master	Deduction PayHead	Allowance PayHead	Sequence	Checklist Approver
IT	-select-	-select-	1	View
	-select-	-select-	1	Add Checklist

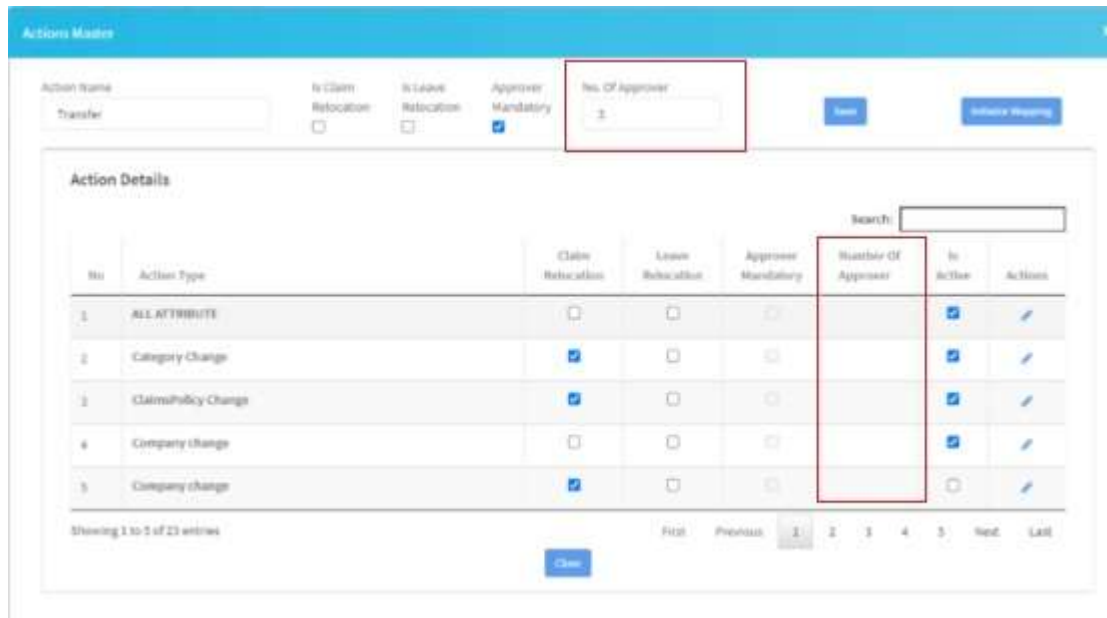
While changing the AttributeConfiguration:





Email Notifications –This is a new enhancement which allow the employee to get the email notification whenever there is a transfer is initiated. Previously, there was no email process available in system which allows the employee to get the intimation of his/her transfer initiation. This will help the employee to get informed prior to the transfer.
As this is customer generic requirement so if wish to enable the setup then connect to Tech Support Team as it's a configuration based.

Transfer –This is a feature enhancement. Previously when the transfer happens then manager mapping was not get updated unless and until it’s been noticed by HR. So now while making the transfer itself, we have given the provision to first set the manager for transfer cases based on approval levels defined in setup.



E-Seperation Form Field : There are minor changes are done in caption.

REHIRE – Caption changes are done in E-Seperation Field Configuration setup for Field **HIRE** as **Open to Rehire**

Skip Level Manager and Effective Date –This is a new functionality. Once the E-Sep request is approved at all levels then have the provision to assign the skip level manage.

E.g. If A is an employee having 2 reportees under him. If A resigns then approver who is applicable to have the access of Skip Level Manager Field or having the provision to update the skip level manager can set the approver for in place of A.

D71020/Qty FI

Show Employees Basic Details

Date of Joining 25-Dec-2014	Date of Confirmation [Empty]	Reason for Separation --Select--
Separation Type --Select--	Date of Resignation 20-Jul-2020	Relieving Date 18-Aug-2020
Notice Period 30	Intended LWD 18-Aug-2020	Letter Uploaded [Empty]
Remarks *	Effective Date [Empty]	Skip Level Manager Search
		Actual Last Working Date 18-Aug-2020

Open To Rehire