



NRDR

GRID Data Exchange Specification

Version 1.4

February 13, 2020

Table of Contents

1	Revision History.....	2
2	GRID Data Elements	3
2.1	GRID Exam Data Submission	3
2.2	Data Model.....	5
3	JSON Schema for GRID Exam	6
3.1	GRID_Exam_Transaction 1.x schema	6
3.2	GRID_Exam_Transaction 2.0 schema	8
3.3	GRID_Exam_Transaction_Status Schema	14
3.4	GRID_WebService_Error schema	15
4	GRID Exam API	17
4.1	Test Environment	17
4.2	Authentication.....	17
4.3	Create or Resubmit Transaction.....	17
4.3.1	Examples POST.....	18
4.4	Get Transaction Status.....	20
4.4.1	Examples GET.....	21
5	Validation & Error Messages	22

NRDR GRID Exam Data Exchange

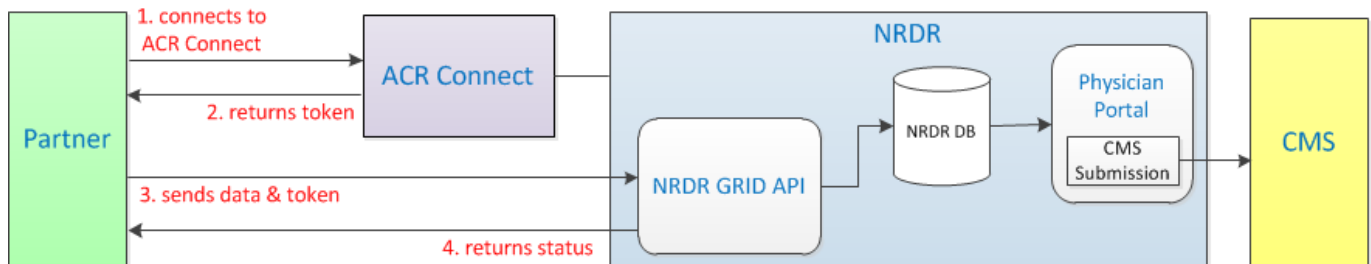
1 Revision History

Date	Description
9/28/2014	Draft
12/4/2014	Added list of web service's methods with description. Added samples of the web service usage.
1/20/2015	Added UAT environment information.
1/23/2015	Updated the NON PQRS data element reference spreadsheet to Non-PQRS-GRID-Data-Elements-20150112.xlsx
1/29/2015	Updated API section with the refresh token information
4/26/2015	Included ACR Connect flow and edits
11/22/2015	Corrected the name of the following parameters of the GET method: Updated transacton_id to id Updated facility_id to facilityid
10/11/2018	Added error codes G1012, G2057, G2091, G2092, G3003, G3042, G3014, G3110, G3111, G3112, G3113, G3114, G3115, G3116, G3117, G3118, G3119, G3120, G3121, G3122, G3123, G3124. The following error codes are obsolete: G3082, G3072, G3061, G3032, G3092, and G3094.
02/19/2019	Added error codes G3032, G3033, G3045, G3072.
04/17/2019	Added new data elements to JSON schema: Multiple_Readers, Place_of_Service. New error codes added: G3095, G3096.
09/17/2019	Data model updated. JSON 2.0 schema added. New error codes added: G3004, G3005, G3006, G3007, G3009, G3010, G3131.
09/17/2019	Error message updated for error code G3045
10/09/2019	New error codes added: G3211, G3212, G3221, G3222.

2 GRID Data Elements

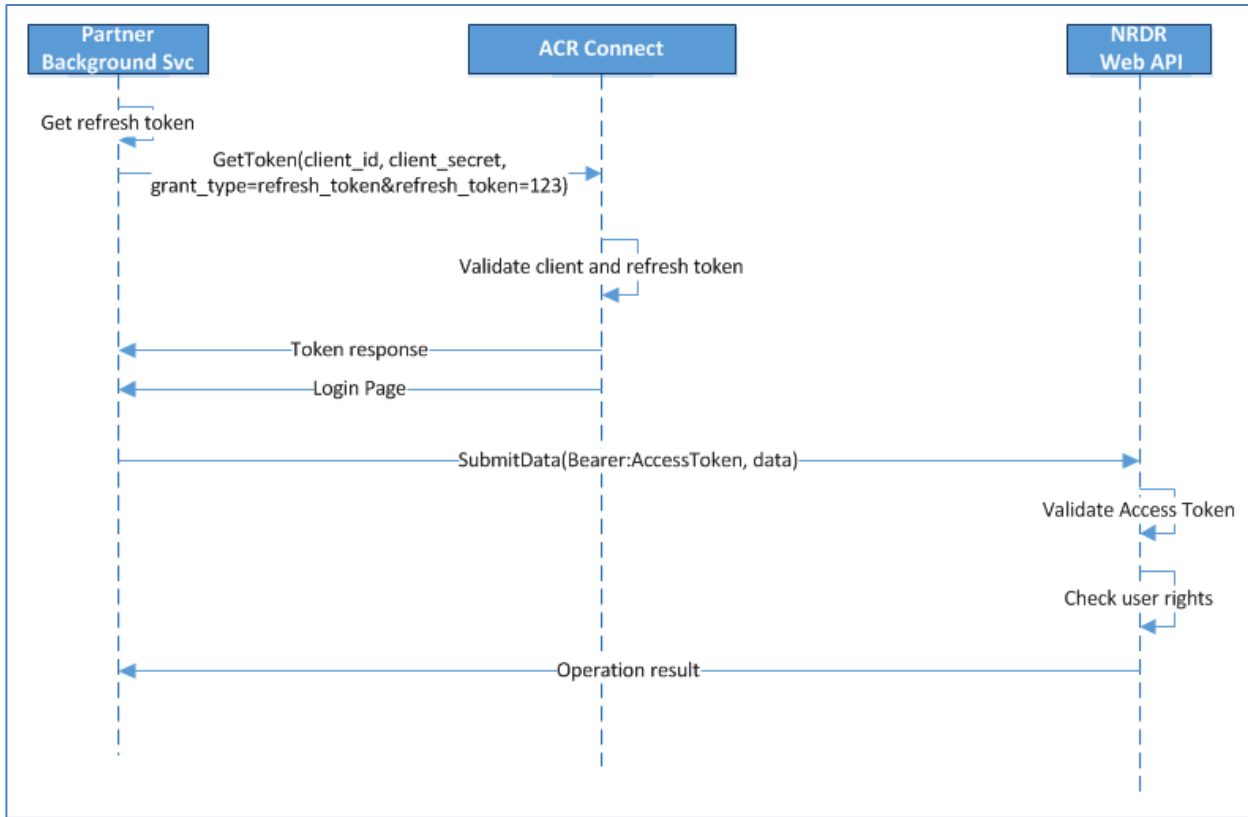
2.1 GRID Exam Data Submission

The NRDR provides a set of APIs which allows authorized partners to submit GRID exam data for their affiliated facilities. Partner is authenticated via the ACR Connect Authentication Service. Once authenticated ACR Connect will provide access token to partner to submit GRID Exam data and query submission status using the NRDR GRID APIs.



This document describes the GRID Exam data elements, JSON schema, NRDR GRID APIs and error messages. It also demonstrates how to use the authorization token when consuming the GRID APIs.

The diagram below depicts the events take place during the authentication and authorization processes.

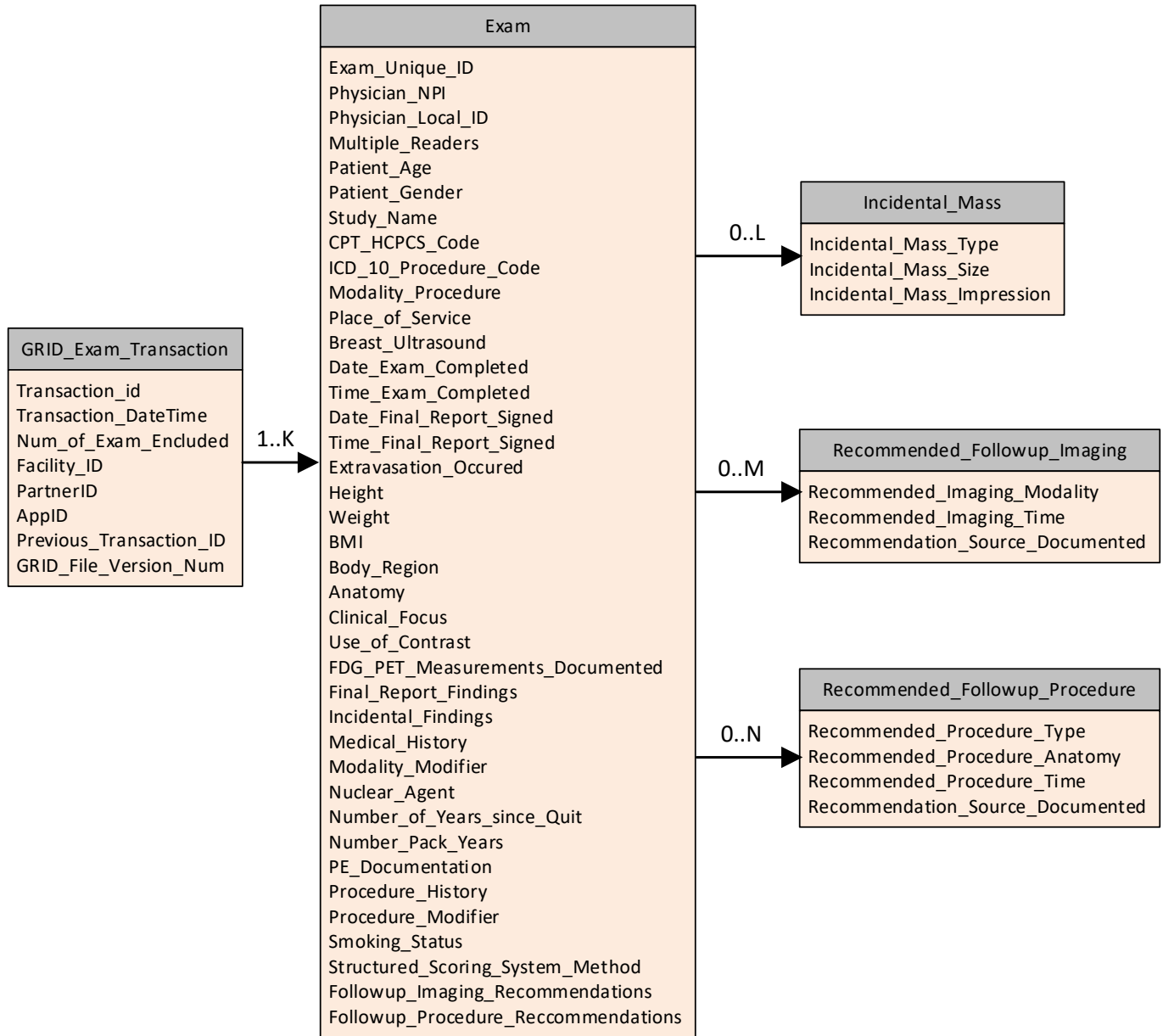


The GRID APIs are a set of REST web services. They return an acknowledgement to the partner when submission is received. It is the responsibility of the partner to capture this acknowledgement to ensure the submission has reached the ACR Connect successfully.

The frequency of the data submission is defined by the partner, however, the ACR prefers the submission to happen more frequent so that the facility/physician will have a faster turnaround time for review and be able to resubmit data before the CMS submission deadline if needed.

2.2 Data Model

The GRID Exam data to be submitted to the ACR NRDR shall be “wrapped” in a transaction. Each transaction has one or more Exams. Each transaction shall contain exam data for one facility.



Where K>=1, L=5, M=5, N=3.

Note: if existing exam is updated then all sub-entities (i.e., Incidental Mass, Recommended Follow-up Imaging, Recommended Follow-up Procedure) data must be included in the uploaded record. Arrays of the data are totally replaced by the new arrays of the data.

The following composite key shall be used to identify the GRID exam record:

- Facility ID
- Exam Unique ID
- CPT HCPCS Code

3 JSON Schema for GRID Exam

3.1 GRID_Exam_Transaction 1.x schema

The “**GRID_Exam_Transaction**” schema describes the data elements in a transaction. You will use POST request to submit GRID exam data. **Transaction_ID** must be unique within your entity.

GRID_Exam_Transaction schema:

```
{
  "name": "GRID_Exam_Transaction",
  "Properties": {
    "Transaction_ID": {
      "type": "string",
      "required": true
    },
    "Transaction_DateTime": {
      "type": "string",
      "required": true
    },
    "Num_of_Exam_Included": {
      "type": "number",
      "required": true
    },
    "Facility_ID": {
      "type": "string",
      "required": true
    },
    "PartnerID": {
      "type": "string",
      "required": true
    },
    "AppID": {
      "type": "string",
      "required": true
    },
    "Previous_Transaction_ID": {
```

```

    "type": "string",
    "required": false
  },
  "Exam": {
    "type": "array",
    "required": true,
    "properties": {
      "Exam_Unique_ID": {
        "type": "string",
        "required": true
      },
      "Physician_NPI": {
        "type": "string",
        "required": true
      },
      "Physician_Local_ID": {
        "type": "string",
        "required": false
      },
      "Multiple_Readers": {
        "type": "number",
        "required": true
      },
      "Patient_Age": {
        "type": "number",
        "required": true
      },
      "Patient_Gender": {
        "type": "string",
        "required": true
      },
      "Study_Name": {
        "type": "string",
        "required": false
      },
      "CPT_HCPCS_Code": {
        "type": "string",
        "required": false
      },
      "ICD_10_Procedure_Code": {
        "type": "string",
        "required": false
      },
      "Modality_Procedure": {
        "type": "number",
        "required": false
      },
      "Place_of_Service": {
        "type": "number",

```



```

        "required": true
    },
    "Num_of_Exam_Included": {
        "type": "number",
        "required": true
    },
    "Facility_ID": {
        "type": "string",
        "required": true
    },
    "PartnerID": {
        "type": "string",
        "required": true
    },
    "AppID": {
        "type": "string",
        "required": true
    },
    "Previous_Transaction_ID": {
        "type": "string",
        "required": false
    },
    "GRID_File_Version_Num": {
        "type": "string",
        "required": false
    },
    "Exam": {
        "type": "array",
        "required": true,
        "properties": {
            "Exam_Unique_ID": {
                "type": "string",
                "required": true
            },
            "Physician_NPI": {
                "type": "string",
                "required": true
            },
            "Physician_Local_ID": {
                "type": "string",
                "required": false
            },
            "Multiple_Readers": {
                "type": "number",
                "required": true
            },
            "Patient_Age": {
                "type": "number",
                "required": true
            }
        }
    }
}

```

```

    },
    "Patient_Gender": {
      "type": "string",
      "required": true
    },
    },
    "Study_Name": {
      "type": "string",
      "required": false
    },
    },
    "CPT_HCPCS_Code": {
      "type": "string",
      "required": false
    },
    },
    "ICD_10_Procedure_Code": {
      "type": "string",
      "required": false
    },
    },
    "Modality_Procedure": {
      "type": "number",
      "required": false
    },
    },
    "Place_of_Service": {
      "type": "number",
      "required": true
    },
    },
    "Breast_Ultrasound": {
      "type": "string",
      "required": false
    },
    },
    "Date_Exam_Completed": {
      "type": "string",
      "required": true
    },
    },
    "Time_Exam_Completed": {
      "type": "string",
      "required": true
    },
    },
    "Date_Final_Report_Signed": {
      "type": "string",
      "required": true
    },
    },
    "Time_Final_Report_Signed": {
      "type": "string",
      "required": true
    },
    },
    "Extravasation_Occurred": {
      "type": "string",
      "required": false
    }
  }

```

```

    },
    "Height": {
      "type": "string",
      "required": false
    },
    },
    "Weight": {
      "type": "string",
      "required": false
    },
    },
    "BMI": {
      "type": "string",
      "required": false
    },
    },
    "Medical_History": {
      "type": "string",
      "required": false
    },
    },
    "Procedure_History": {
      "type": "string",
      "required": false
    },
    },
    "Smoking_Status": {
      "type": "string",
      "required": false
    },
    },
    "Number_of_Years_Since_Quit": {
      "type": "string",
      "required": false
    },
    },
    "Number_Pack_Years": {
      "type": "string",
      "required": false
    },
    },
    "Body_Region": {
      "type": "string",
      "required": false
    },
    },
    "Anatomy": {
      "type": "string",
      "required": false
    },
    },
    "Clinical_Focus": {
      "type": "string",
      "required": false
    },
    },
    "Use_of_Contrast": {
      "type": "string",
      "required": false
    }
  }

```

```

    },
    "Modality_Modifier": {
      "type": "string",
      "required": false
    },
    "Procedure_Modifier": {
      "type": "string",
      "required": false
    },
    "Nuclear_Agent": {
      "type": "string",
      "required": false
    },
    "Final_Report_Findings ": {
      "type": "string",
      "required": false
    },
    "FDG_PET_Measurements_Documented": {
      "type": "string",
      "required": false
    },
    "PE_Documentation": {
      "type": "string",
      "required": false
    },
    "Structured_Scoring_System_Method": {
      "type": "string",
      "required": false
    },
    "Incidental_Findings": {
      "type": "string",
      "required": false
    },
    "Incidental_Mass": {
      "type": "array",
      "required": false,
      "properties": {
        "Incidental_Mass_Type": {
          "type": "string",
          "required": false
        },
        "Incidental_Mass_Size": {
          "type": "string",
          "required": false
        },
        "Incidental_Mass_Impression ": {
          "type": "string",
          "required": false
        }
      }
    },

```

```

        }
    },
    "Followup_Imaging_Recommendations": {
        "type": "string",
        "required": false
    },
    "Recommended_Followup_Imaging": {
        "type": "array",
        "required": false,
        "properties": {
            "Recommended_Imaging_Modality": {
                "type": "string",
                "required": false
            },
            "Recommended_Imaging_Time": {
                "type": "string",
                "required": false
            },
            "Recommendation_Source_Documented ": {
                "type": "string",
                "required": false
            },
        }
    },
},

"Followup_Procedure_Recommendations": {
    "type": "string",
    "required": false
},
"Recommended_Followup_Procedure": {
    "type": "array",
    "required": false,
    "properties": {
        "Recommended_Procedure_Type": {
            "type": "string",
            "required": false
        },
        "Recommended_Procedure_Anatomy": {
            "type": "string",
            "required": false
        },
        "Recommended_Procedure_Time": {
            "type": "string",
            "required": false
        },
        "Recommendation_Source_Documented ": {
            "type": "string",
            "required": false
        },
    },
},

```

```

    }
  }
}

```

3.3 GRID_Exam_Transaction_Status Schema

The “**GRID_Exam_Transaction_Status**” schema describes the data elements in the validation statuses of a transaction and the exams associated with it. You will use the GET request to query the error encountered during the submission process.

Note: the value of the **GRID_Exam_Transaction_Status.Error_Msg** attribute consists of multiple error messages that occurred while validating a transaction. Each message contains the error code-message pair. Messages are separated by the ‘|’ delimiter.

For example:

G1000:Missing Transaction_ID|G1011:Missing Transaction_DateTime

The value of the **GRID_Exam_Transaction_Status.Exam_Error.Error_Msg** attribute consists of multiple error messages that occurred while validating an exam. Each message contains the error code-message pair. Messages are separated by the ‘|’ delimiter.

For example:

G2000:Missing Exam_Unique_id|G2011:Missing Patient_id

GRID_Exam_Transaction_Status schema:

```

{
  "name": "GRID_Exam_Transaction_Status",
  "Properties": {
    "Transaction_ID": {
      "type": "string",
      "required": true
    },
    "Transaction_DateTime": {
      "type": "string",
      "required": true
    },
    "Num_of_Exam_Included": {
      "type": "number",
      "required": true
    },
    "Num_of_Exam_In_Error": {
      "type": "number",
      "required": true
    }
  }
}

```

```

"PartnerID": {
  "type": "string",
  "required": true
},
"AppID": {
  "type": "string",
  "required": true
},
"Facility_ID": {
  "type": "string",
  "required": true
},
"Error_Msg": {
  "type": "string",
  "required": false
},
"Exam_Errors": {
  "type": "array",
  "required": true,
  "properties": {
    "Exam_Unique_ID": {
      "type": "string",
      "required": true
    },
    "Error_Msg": {
      "type": "string",
      "required": true
    }
  }
}
}
}
}
}
}
}
}
}
}

```

3.4 GRID_WebService_Error schema

"GRID_WebService_Error" schema describes detailed error information which is returned by all API responses with a status code other than 200:

GRID_WebService_Error schema:

```

{
  "name": "GRID_WebService_Error",
  "Properties": {
    "error_code": {
      "type": "string",
      "required": true
    },
    "error_description": {
      "type": "string",
      "required": true
    }
  }
}

```


4 GRID Exam API

4.1 Test Environment

Base URL: <https://nrdr9x.acr.org/NonPQRSapi/grid/transactions>

Application ID: 10005

Partner ID: to be provided

Facility ID: to be provided

4.2 Authentication

All API requests must be authenticated and authorized. To call the API you must add JWT token received from ACR Connect to the “Authorization” request header using the following format:

```
Bearer <jwt-token>
```

The 401 status code indicates errors related to the authentication. Following error codes are used to provide more detailed error:

- `invalid_token`, token is invalid or expired
- `missing_token`, token is not provided in the request header

4.3 Create or Resubmit Transaction

POST

This request is used to submit a new set of GRID exams data in the **GRID_Exam_Transaction** schema. Each transaction must have a unique **Transaction_ID**. Partner is required to maintain the uniqueness of the **Transaction_ID**. The **Previous_Transaction_ID** is used for resubmission. If you need to resubmit a previous transaction you will submit a new transaction and populate the **Previous_Transaction_ID** with the **Transaction_ID** that was submitted previously.

Acceptable request representations:

- application/json

Possible responses:

- 200, returned when transaction data is uploaded and transaction is created successfully,
- 400, content-type: application/json
 - error_code = 'data_error'

Transaction data is missing or doesn't have valid JSON representation

- 403, content-type: application/json
 - error_code = 'no_permission'

Authenticated user doesn't have permissions to upload transaction data for a given facility

4.3.1 Examples **POST**

Sample parameters:

Facility_ID: "100000"

PartnerID: "30004"

AppID: "10005"

Authorization: "Bearer

```
eyJ0eXAiOiJKV1QiLCJhbGciOiJodHRwOi8vd3d3LnczLm9yZy8yMDAwLzA5L3htbGRzaWcjcjNhLXNoYTEiLCJ4NXQiOiJzWndDNC15STBQZmNHeDAyWlNsQjdaa1NRLUUiQ.eyJpc3MiOiJodHRwczovL1NIY3VyZUF1dGgwMVZNLmFjci5vcjciLCJhdWQiOiJodHRwczovL1NIY3VyZUF1dGgwMVZNLmFjci5vcjciLCJyYmYiOiJlMjlyNzY3ODIsImV4cCI6MTQyMzY2MzE4MiwiY2xpZW50X2lkIjoiaWYyZjZjM5NTI0ZjlyNGRmMDgONTlWYTJmYWE5YTkYNzUiLCJzY29wZSI6WjVvcGVuaWQiLCJwXzJlI0sInN1YiI6IjEwMDAwMF9udWFuY2UiLCJhbXliOiJwYXNzd29yZCI6ImF1dGhfdGltZSI6IjE0MjlyNzY3NTciLCJpZHAiOiJlMjlyNzY3NTc1cmVudXRoNSJ9.AFsoPNtIT8N0N6w1y0OZLokdplfRM2Y8OAvquMXpkol_6b9ANEhXY72ubuyt6-4vdJ165aVUXPRDTF37UT9cqV21hRTPofYYM0tV5gksUjvLzKaPfT6EwB8ctQnHs1pxyDGSbKDM-dR6upj6x0eZ7046Zwi8o8Zhkeu0bFZPNmLS7y96_A9uyGBkbt69Ih0aCBNRvtabqkD3vJsWB4ElfiqJJ2RO8XPCGfSoYAnuosgh5Cm6kMNN7WiX4rgFps20MryBLtutKztcNhaj-l65gzxyrJpgmq8r9dBWiF16nFc-rKkNr6Gdj2TH9EABloC6aO_CQQFtgrXFLEchnSPw"
```

Note: the authentication/authorization mechanism in the GRID Exam API adopts the ACR Connect security model which requires an access token after authenticated successfully. The token in the sample parameters above is merely an example.

```
function createTransaction(transactionData, token) {  
  $.ajax({  
    type: 'POST',  
    url: "https://nrdr9x.acr.org/NonPQRSapi/grid/transactions",  
    data: JSON.stringify(transactionData),  
    dataType: "json",  
    contentType:"application/json; charset=utf-8",  
    headers: { "Authorization": "Bearer " + token },  
  
    success: function (data) {  
      // handle data load success  
    }  
  });  
}
```

This function can be used in the following way:

```
var transactionData =  
{
```

```

"Transaction_ID": "test_0922_10",
"Transaction_DateTime": "02/17/2019",
"Num_of_Exam_Included": 1,
"Facility_ID": "100640",
"PartnerID": "1",
"AppID": "1",
"Previous_Transaction_ID": null,
"GRID_File_Version_Num": "2.0",
"Exam": [
  {
    "Exam_Unique_ID": "test_0922_web",
    "Patient_Age": "56",
    "Patient_Gender": "M",
    "Study_Name": "Name",
    "Physician_NPI": "1234567089",
    "Physician_Local_ID": "MGH-7155",
    "Multiple_Readers": "1",
    "ICD_10_Procedure_Code": "70478",
    "CPT_HCPCS_Code": "71465",
    "Modality_Procedure": null,
    "Place_of_Service": "88",
    "Breast_Ultrasound": "Y",
    "Date_Exam_Completed": "05/05/2016",
    "Time_Exam_Completed": "15:35:23",
    "Date_Final_Report_Signed": "05/05/2016",
    "Time_Final_Report_Signed": "16:21:33",
    "Extravasation_Occurred": "Y",
    "Height": "23.5",
    "Weight": "12",
    "BMI": "41.7",
    "Medical_History": [1,2,3,4,5],
    "Procedure_History": [1,88],
    "Smoking_Status": 2,
    "Number_of_Years_since_Quit": "23.55",
    "Number_Pack_Years": "312.9",
    "Body_Region": [2,6,7],
    "Anatomy": [5,10],
    "Clinical_Focus": [1,88],
    "Use_of_Contrast": 3,
    "Modality_Modifier": [1],
    "Procedure_Modifier": 20,
    "Nuclear_Agent": [99],
    "Final_Report_Findings": [2,5],
    "FDG_PET_Measurements_Documented": [1,5],
    "PE_Documentation": [1,2],
    "Structured_Scoring_System_Method": [1,8],
    "Incidental_Findings": [1,2],
    "Incidental_Mass": [{
      "Incidental_Mass_Type": 3,
      "Incidental_Mass_Size": "123.6",
      "Incidental_Mass_Impression": 5
    },
    {
      "Incidental_Mass_Type": 2,
      "Incidental_Mass_Size": "13.6",
      "Incidental_Mass_Impression": 4
    }
  ]
}

```

```

        }],
"Followup_Imaging_Recommendations":3,
"Followup_Imaging":[
    {
        "Recommended_Imaging_Modality":7,
        "Recommended_Imaging_Time":344,
        "Recommendation_Source_Documented":1
    },
    {
        "Recommended_Imaging_Modality":2,
        "Recommended_Imaging_Time":34,
        "Recommendation_Source_Documented":0
    }
],
"Followup_Procedure_Recommendations":3,
"Followup_Procedure":[
    {
        "Recommended_Procedure_Type":88,
        "Recommended_Procedure_Anatomy":10,
        "Recommended_Procedure_Time":23,
        "Recommendation_Source_Documented":0
    },
    {
        "Recommended_Procedure_Type":5,
        "Recommended_Procedure_Anatomy":15,
        "Recommended_Procedure_Time":213,
        "Recommendation_Source_Documented":1
    }
],
}
]
}
// get ACR Connect token
var token = GetAuthorizationToken();
createTransaction(transactionData, token);

```

4.4 Get Transaction Status

GET

This request is used to get a transaction JSON object for a single transaction.

Possible responses:

- 200, content-type: application/json
Response will contain JSON data according to **GRID_Exam_Transaction_Status** schema
- 400, content-type: application/json
 - error_code = 'missing_param'
Indicates that missing transaction ID query string parameter
- 404, content-type: application/json
 - error_code = 'invalid_param'
Indicates that transaction with a given ID doesn't exist

4.4.1 Examples GET

Sample parameters:

```
id: "26"      (transaction id)
FacilityID: "100000"
PartnerID: "30004"
AppID: "10005"
Authorization: "Bearer
eyJ0eXAiOiJKV1QiLCJhbGciOiJodHRwOi8vd3d3LnczLm9yZy8yMDAwLzA5L3htbGRzaWcjcjNhLXNoYTEiLCJ4
NXQiOiZwZndDNC15STBQQmNHeDAyWlNsQjdaa1NRLUUiQ.eyJpc3MiOiJodHRwczovL1NIY3VyZUF1dGgw
MVZNLmFjci5vcmlcLjhdWQoiOiJodHRwczovL1NIY3VyZUF1dGgwMVZNLmFjci5vcmlcLjUyYmYiOjE0MjlyNzY
3ODIsImV4cCI6MTQyMjMzE4MiwiaWY2xpZW50X2lkIjoiaWY1ZjM5NTI0ZjlyNGRmMDgONTlWYTJmYWE5Y
TkyNzUuIiLCJzY29wZSI6WyJvcGVuaWQiLCJwXzll0sInN1YiI6IjEwMDAwMF9udWFuY2UuIiLCJhbXliOiJwYXNzd
29yZCI6ImF1dGhfdGltZSI6IjE0MjlyNzY3NTciLCJpZHAiOiJlZjZWN1cmVbZXRvNSJ9.AFsoPntIT8N0N6w1y0OZL
okdplfRM2Y8OAvquMXpkol_6b9ANEhXY72ubuylt6-
4vdJ165aVUXPRDTF37UT9cqv21hRTpOfYYM0tV5gksUjvLzKaPft6EWbB8ctQnHs1pxyDGSbKDM-
dR6upj6x0eZ7O46Zwi8o8Zhkeu0bFZPNmLS7y96_A9uyGBkbt69lh0aCBNRvtabqkD3vJsWB4ElfiqJJ2RO8XPC
GfSoYAnuosgH5Cm6kMNN7WiX4rgFps20MryBLtutKztcNhaj-l65gzxjrJpgmq8r9dBWFiF16nFc-
rKkNr6Gdj2TH9EABloC6aO_CQQFtgrXFLEchnSPw"
```

Note: the authentication/authorization mechanism in the GRID Exam API adopts the ACR Connect security model which requires an access token after authenticated successfully. The token in the sample parameters above is merely an example.

```
function getTransaction(transactionId, token, partnerId, appId, facilityId) {
    $.ajax({
        type: 'GET',
        url: "https://nrdr9x.acr.org/NonPQRSapi/grid/transactions",
        data: { "id": transactionId, "appid": appId, "partnerid":
partnerId,"facilityid": facilityId },
        headers: { "Authorization": "Bearer " + token },
        success: function (data) {
            // handle JSON with transaction data
        }
    });
}
```

5 Validation & Error Messages

The Validator will validate the following:

1. JSON syntax
2. Required fields

The table below lists the possible messages generated by the validator during the validation process for a transaction:

Error Code	Message
Transaction level	
G0000	Transaction is loaded successfully
G0001	Transaction has been received and is pending for validation
G0002	Validation has been completed, pending for loading to database
G0003	Transaction was partially loaded. Some elements did not pass validation and were rejected.
G0004	The entire transaction was rejected due to failure in validation
G0005	This transaction has been replaced with another transaction
G1003	Unable to import data submitted. Data does not match schema
G1004	Unable to import data submitted. Data is empty or null
G1005	Error importing data <exception message>
G1010	User account is not authorized to submit data to GRID
G1012	Partner <Partner ID> is not authorized to submit data for facility <facility ID> and/or application <application>
G2001	Missing Transaction_ID
G2011	Missing Transaction_DateTime
G2012	Transaction_DateTime is not a valid date time format
G2013	Transaction_DateTime is a future date
G2014	Transaction_ID must be unique. <transaction_id> has been submitted in a previous transaction
G2021	Missing Num_of_Exam_Included
G2022	Num_of_Exam_Included is not an integer
G2031	Missing PartnerID
G2032	Invalid PartnerID
G2041	Missing AppID
G2042	Invalid AppID
G2051	Missing Facility_ID
G2052	Invalid Facility_ID
G2053	Facility has not registered for GRID. Submission aborted

Error Code	Message
G2054	Facility has not been accepted to GRID. Submission aborted
G2057	Invalid FacilityID. User has no access to the registry of the facility
G2062	Invalid Prev_Transaction_ID. No transactions with Transaction ID <prev_transaction_id> was received till now
G2071	Missing exam object information
G2072	Data in tag Num_of_Exams_Included <num_of_exams_included>does not match with exam received <total # exam received>
G2081	Some of the exams did not pass validation and were rejected
G2091	Transaction has unknown element(s): <unknown_elements_list>
G2092	Forbidden symbol ' ' in field(s): <fields_names>
Exam level	
G3001	Missing Exam Unique ID
G3003	Invalid. Record - <number of fields> entries expected. <number of fields in the exam provided> read.
G3004	Invalid {0}. Maximum array length is {1} elements
G3005	Invalid {0}. Field must contain only the characters 0-9. Field may contain a decimal point
G3006	Invalid {0}. Field must be numeric with up to {1} digits after the decimal point
G3007	Invalid {0} format: {1}
G3009	Invalid {0}: {1}. Possible values between {2} and {3}
G3010	Invalid {0}. Values should be unique within array
G3081	Missing Patient Gender
G3071	Missing Patient Age
G3041	Missing Physician_NPI
G3042	Invalid Physician_NPI
G3011	CPT_HCPCS_Code is required when neither ICD_10_Procedure_Code nor Modality_Procedure is provided
G3012	Invalid CPT_HCPCS_Code

Error Code	Message
G3013	Invalid CPT_HCPCS_Code. Field must contain only alphanumeric characters
G3014	Invalid. CPT_HCPCS_Code length must be <number of characters> characters
G3021	ICD_10_Procedure_Code is required when neither CPT_HCPCS_Code nor Modality_Procedure is provided
G3031	Modality_Procedure is required when neither CPT_HCPCS_Code nor ICD_10_Procedure_Code is provided
G3032	Invalid version number. Version number {0} not supported
G3033	Invalid version number. Version number must be {0}. Field read: {1}
G3045	Warning. Physician NPI_does not exist for this facility ID/registry
G3051	Breast_Ultrasound is required when CPT_HCPCS_Code is not provided
G3061	Missing Date_Exam_Completed
G3062	Invalid {0} format: {1}. Valid format is mm/dd/yyyy
G3063	Missing Time_Exam_Completed
G3064	Invalid Time_Exam_Completed format: <time_exam_completed>. Valid format is hh:mi:ss in military format
G3072	Invalid. Patient Age must be equal or less than 120 years
G3091	Missing Date_Final_Report_Signed
G3093	Missing Time_Final_Report_Signed
G3095	Invalid. Missing Multiple_Readers
G3096	Invalid. Missing Place_of_Service
G3101	Contrast_Usage is required when CPT_HCPCS_Code is not provided
G3110	Invalid <field_name>. Maximum character length is <field_max_length> character(s)
G3111	Invalid <field_name>. Field must contain only the characters 0-9
G3112	Invalid <field_name>. <Hour, Minutes or Seconds> must be in a <time_format> format
G3113	Invalid <field_name>. <Hour, Minutes or Seconds> must be in a numeric <length> digit <format> format
G3114	Invalid <field_name>. <Hour, Minutes or Seconds> must be between <min_value> and <max_value>
G3115	Invalid <field_name>. Field must contain 'Y' or 'N'
G3116	Invalid <field_name>. Values <possible_values> expected

Error Code	Message
G3117	Invalid <field_name>. Month must be in a 2 digit mm format
G3118	Invalid <field_name>. Month must be between 1 and 12
G3119	Invalid <field_name>. Month must be a numeric value
G3120	Invalid <field_name>. Day must be in a 2 digit dd format
G3121	Invalid <field_name>. Day must be between 1 and 31
G3122	Invalid <field_name>. Day must be a numeric value
G3123	Invalid <field_name>. Year must be in a 4 digit yyyy format
G3124	Invalid <field_name>. Year must be between 1900 and <current_year>
G3125	Invalid <field_name>. Year must be a numeric value
G3126	Invalid <field_name>. Month must be before or on present date
G3127	Invalid <field_name>. Day must be before or on present date
G3128	Invalid <field_name>. Dates in a leap year in the month of February must have day values between 1 and 29
G3129	Invalid <field_name>. Dates in the month of February must have day values between 1 and 28
G3130	Invalid <field_name>. Dates in the months of April, June, September, and November must have day values between 1 and 30
G3131	Invalid <field_name>. Incompatible set of values for multi selection field.
G3132	InvalidWarning. Date&Time_Report_Signed must be on or after Date&Time_Exam_Completed Date&Time_Report Signed must be on or after Date&Time Exam Completed
G3211	Warning. Number_Of_Packs_Year_Smoking is required <u>not provided</u> when Smoking status is 'Current smoker', 'Former smoker' or 'Smoker, current status unknown'
G3212	Invalid. Number_Of_Packs_Year_Smoking only applicable if Smoking status is 'Current smoker', 'Former smoker' or 'Smoker, current status unknown'

Error Code	Message
G3221	Warning. Number_Of_Years_Since_Quit is required <u>not provided</u> when Smoking status is 'Former smoker'
G3222	Invalid. Number_Of_Years_Since_Quit only applicable if Smoking status is 'Former smoker'