

# National Radiology Data Registry

---

## Facility Report, 2019 Jul-Dec

Sample Facility  
(Facility ID: 100853)

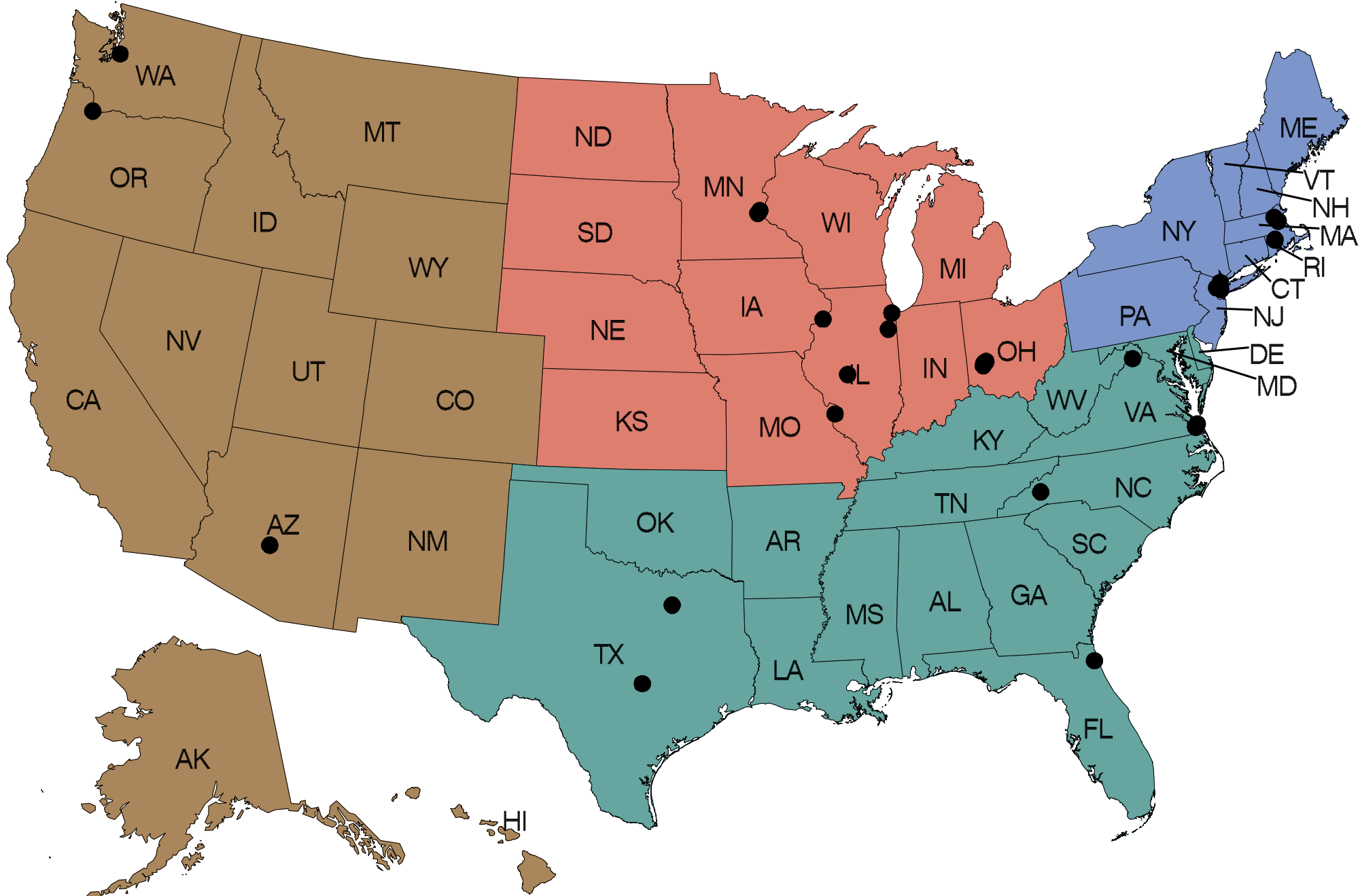


[nrdr.acr.org](http://nrdr.acr.org)



***This page is intentionally blank.***

**CT Colonography Registry**  
Jul 2019 - Dec 2019



*Black dots indicate CTC participating facilities*

**Census Region**    ■ Northeast    ■ Midwest    ■ South    ■ West

**CT Colonography Registry**  
**Jul 2019 - Dec 2019**  
**Summary Table - Sample Facility**

	Facility						Registry		
	Your facility: 100853			Other facilities					
	Num <sup>1</sup>	Den <sup>2</sup>	%	Num <sup>1</sup>	Den <sup>2</sup>	%	Num <sup>1</sup>	Den <sup>2</sup>	%
<b>Adequate Bowel Cleansing and Distention</b>	1	2	50.0	656	851	77.1	657	853	77.0
<b>Adequacy of Screening CTC Exam</b>	2	2	100.0	774	817	94.7	776	819	94.7
<b>Adequacy of Diagnostic CTC Exam</b>	2	2	100.0	29	30	96.7	31	32	96.9
<b>Colonic Perforations</b>	0	2	0.0	0	296	0.0	0	298	0.0
<b>True Positives (ACRad 1)</b>		0		4	5	80.0	4	5	80.0
<b>Clinically Significant Extracolonic Findings</b>	0	2	0.0	174	913	19.1	174	915	19.0

**Table of CT DIvol - Sample Facility**

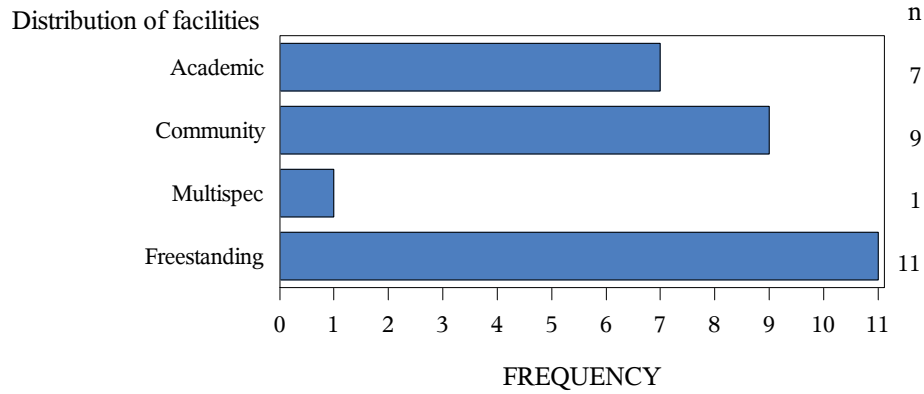
<i>Your Facility (100853)</i>		<i>CTC Registry</i>	
<i>N</i>	<i>P25-Median-P75</i>	<i>N</i>	<i>P25-Median-P75</i>
2	(4/12/20)	845	(5/10/16)

<sup>1</sup>Num (Numerator): Instances

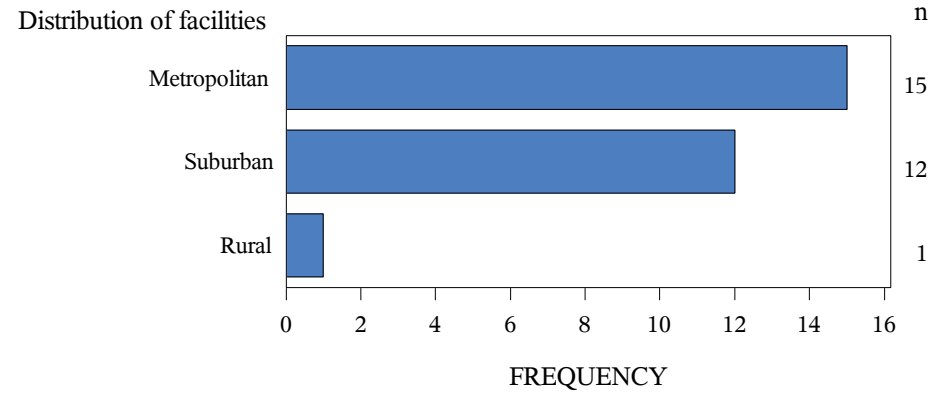
<sup>2</sup>Den (Denominator): Total number eligible for measure  
 Total # of cases in the CTC Registry= 915

# CTC Facility Characteristics

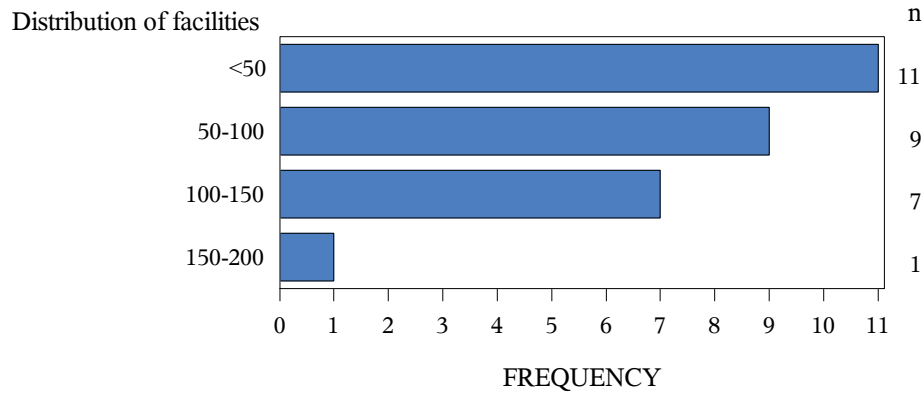
**Facility type**  
Sample Facility : Freestanding



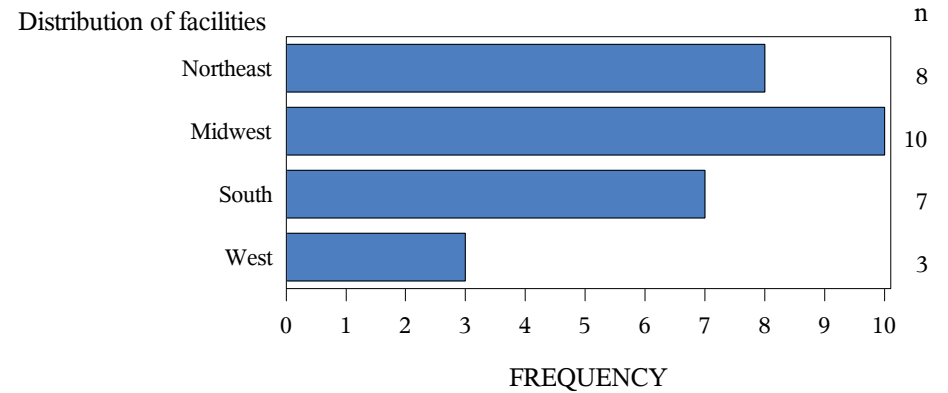
**Location**  
Sample Facility : Metropolitan



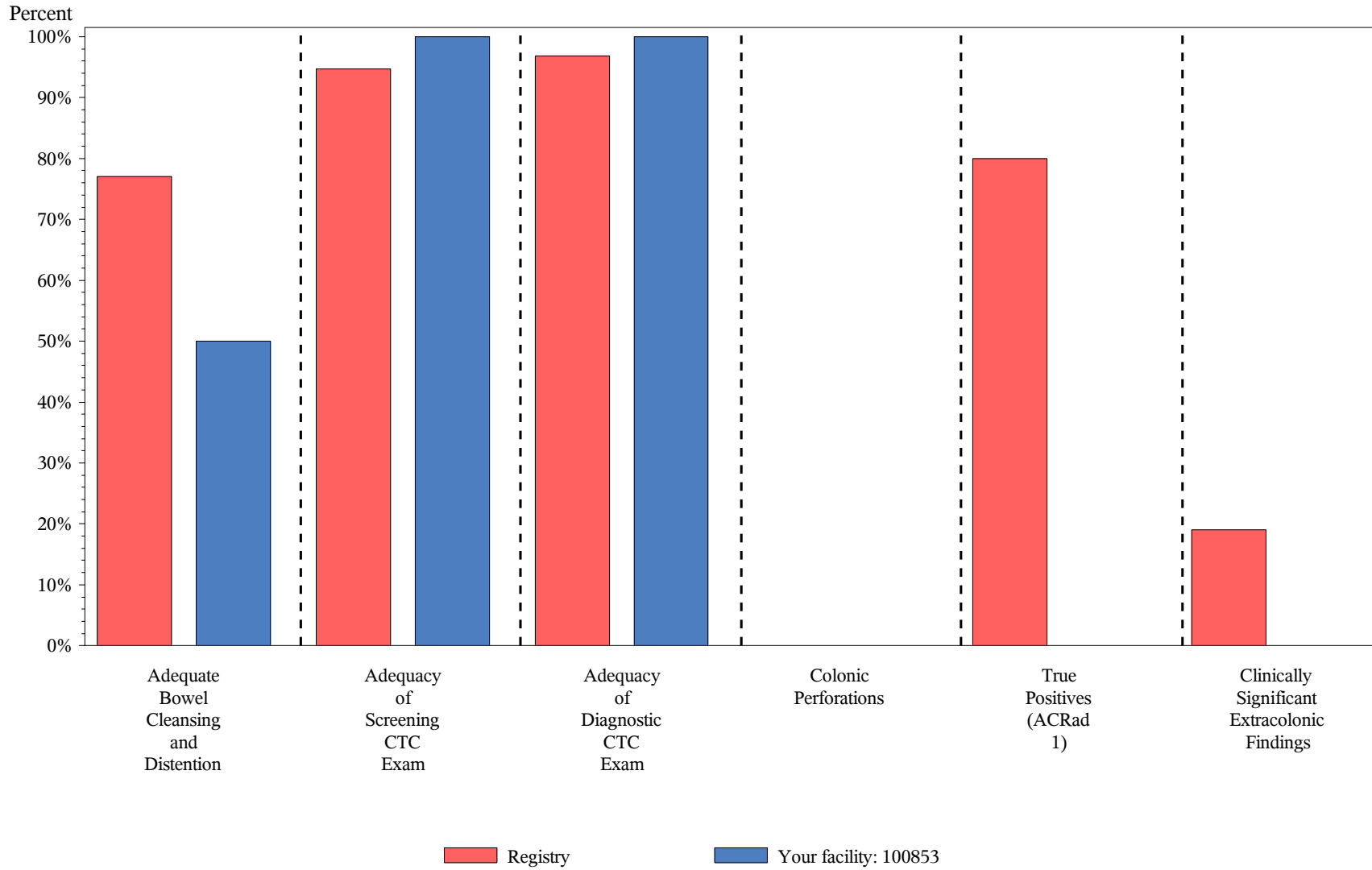
**Number of exams**  
Sample Facility : Missing



**Census region**  
Sample Facility : South



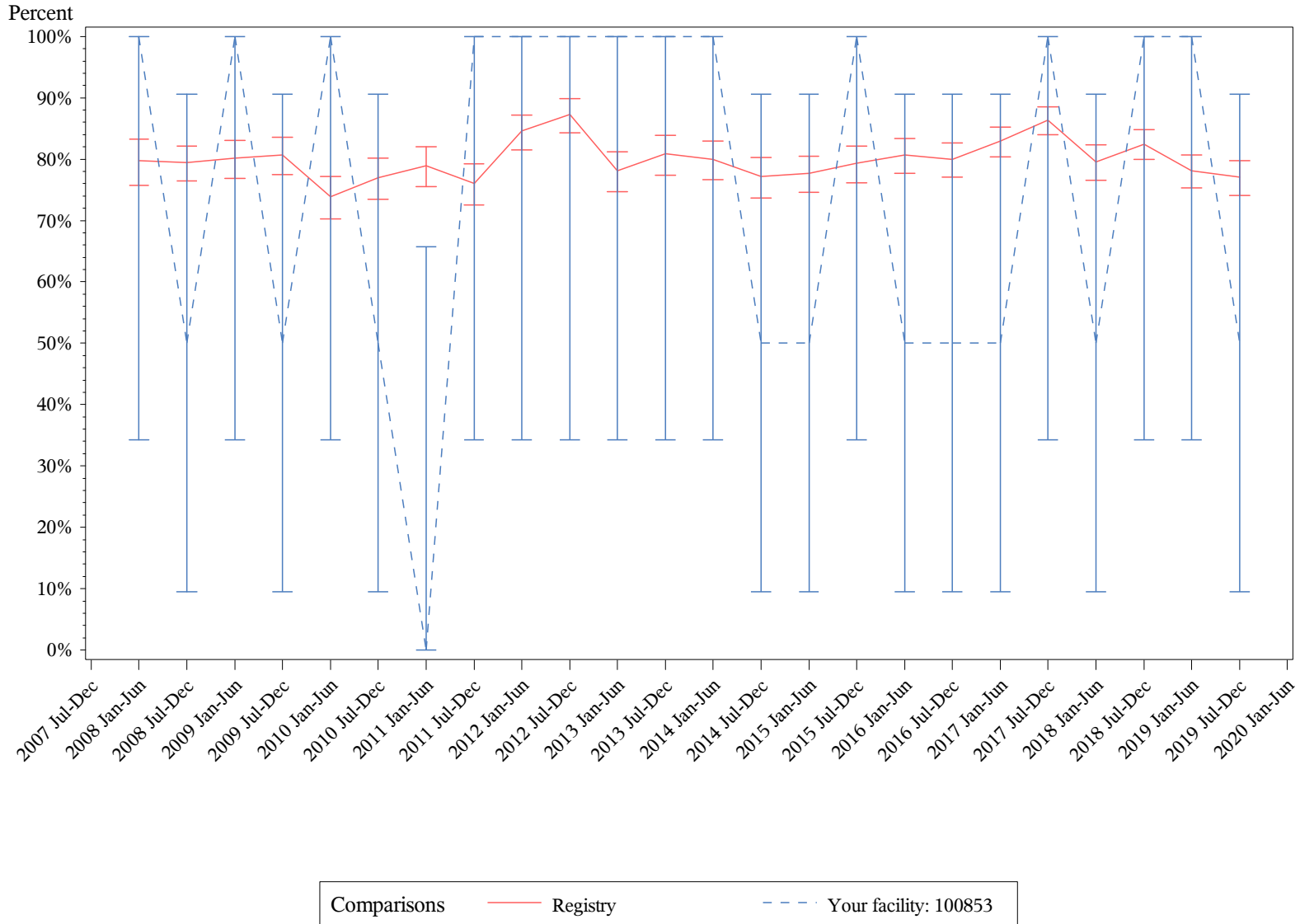
**CT Colonography**  
**Jul 2019 - Dec 2019**  
**Summary Chart - Sample Facility**



# CT Colonography

## Jul 2019 - Dec 2019

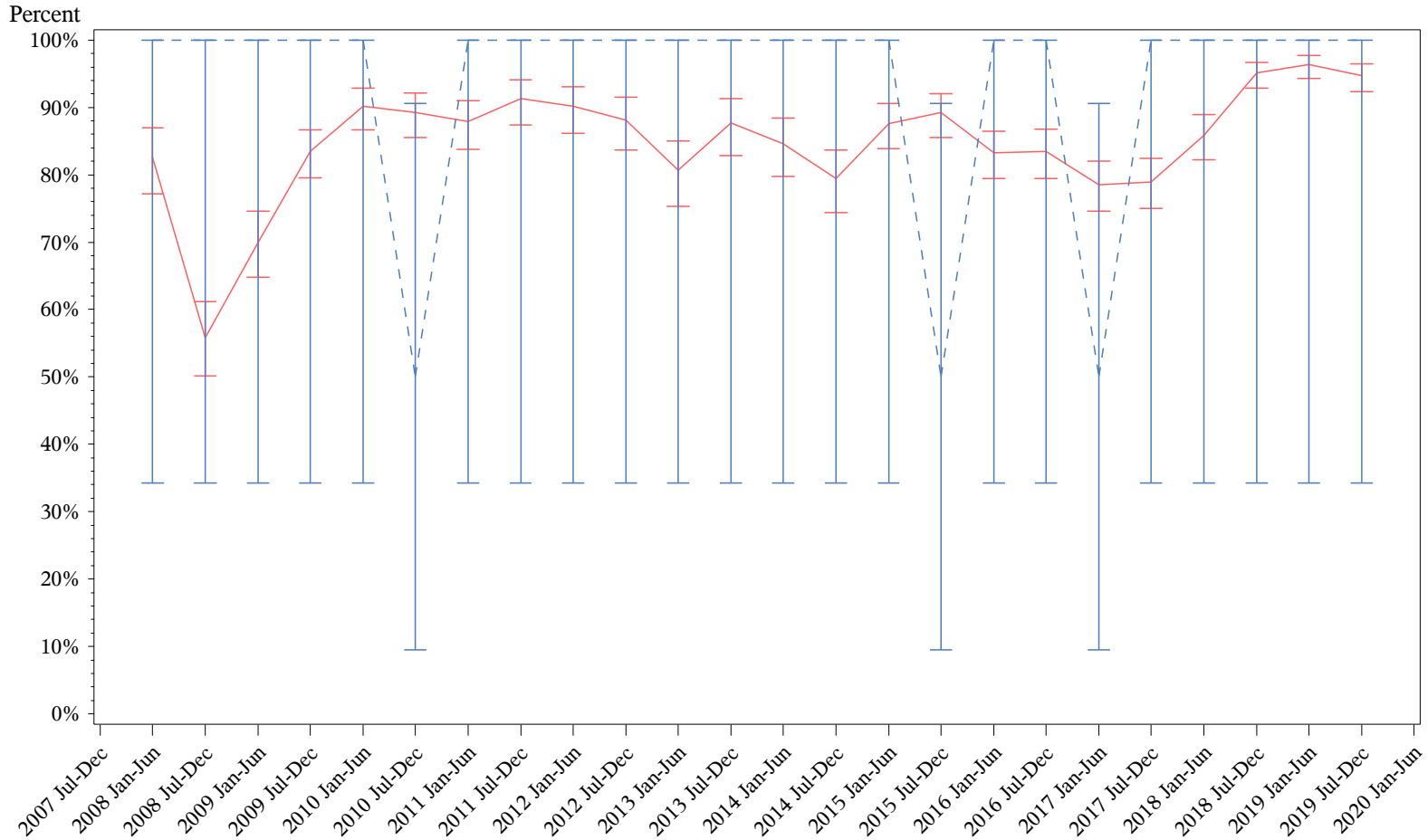
### Trend Chart: Adequate Bowel Cleansing and Distention



# CT Colonography

## Jul 2019 - Dec 2019

### Trend Chart: Adequacy of Screening CTC Exam



*\*For exams submitted before October 7, 2008, screening adequacy rates were calculated using collimation and kVp, effective mAs and quality reference mAs. For exams submitted on or after October 7, 2008, screening adequacy rates were calculated using CTDIvol.*

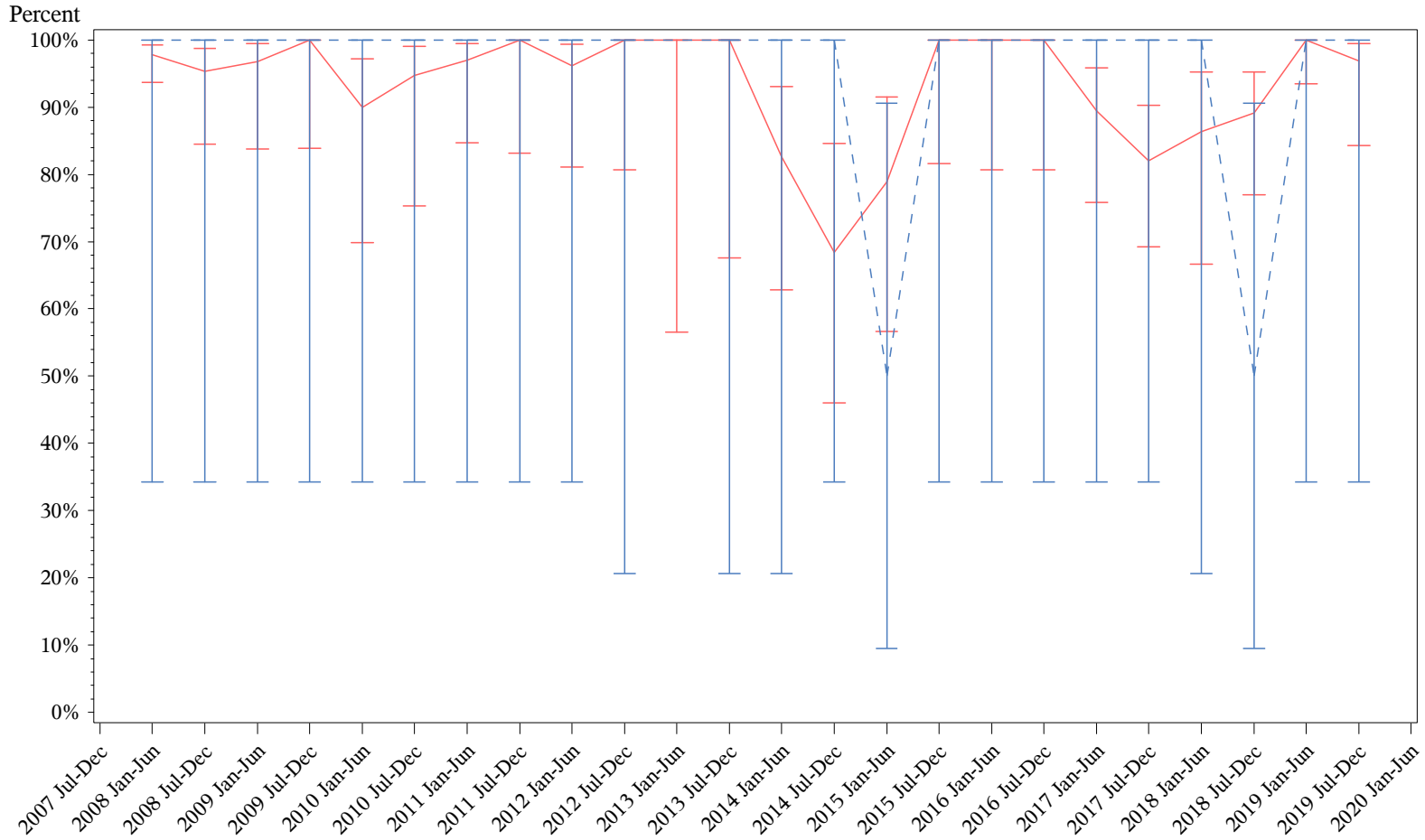
Comparisons    Registry    Your facility: 100853



# CT Colonography

## Jul 2019 - Dec 2019

### Trend Chart: Adequacy of Diagnostic CTC Exam



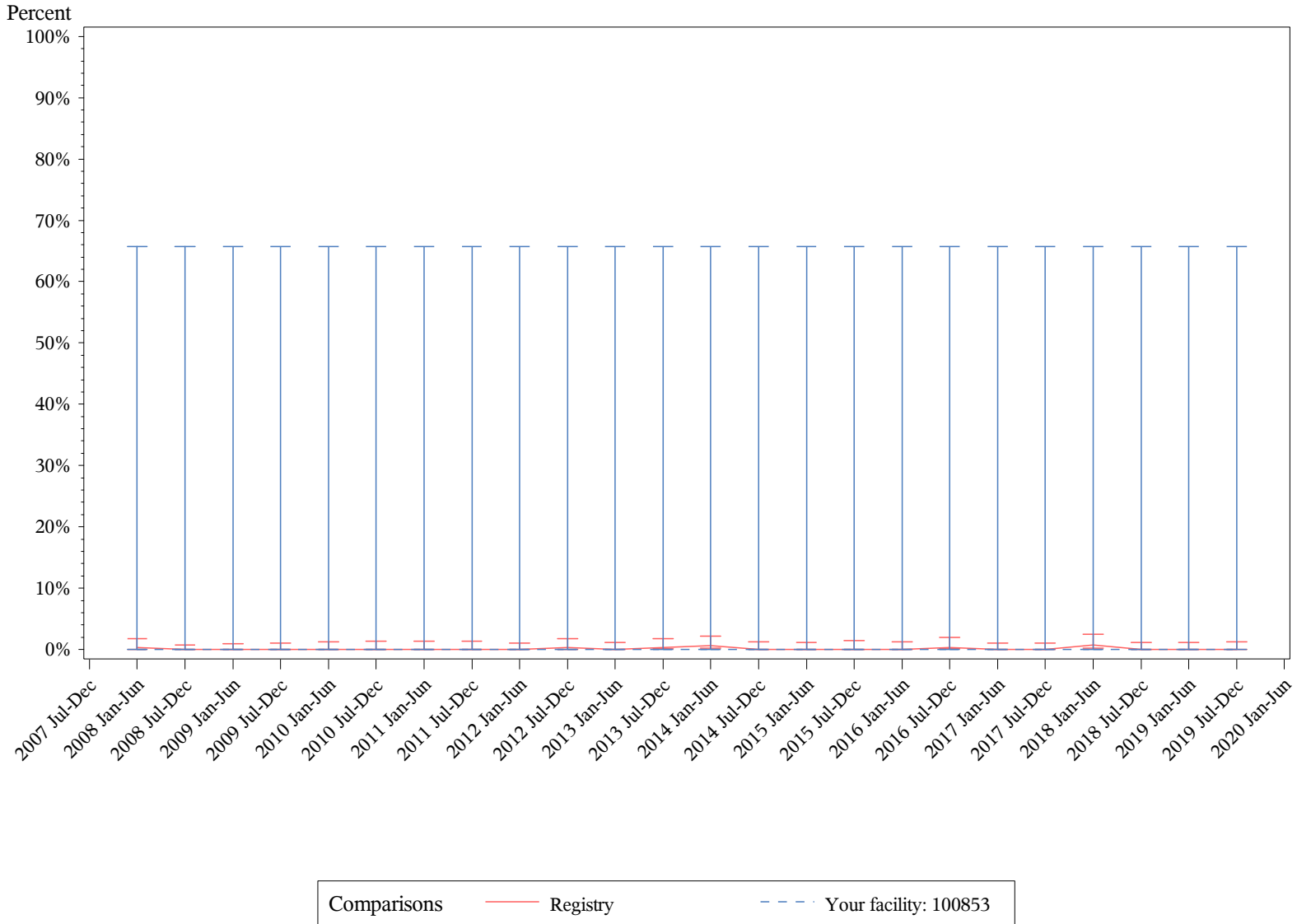
*\*For exams submitted before October 7, 2008, diagnostic adequacy rates were calculated using collimation and kVp.*

Comparisons    — Registry    - - - Your facility: 100853

# CT Colonography

## Jul 2019 - Dec 2019

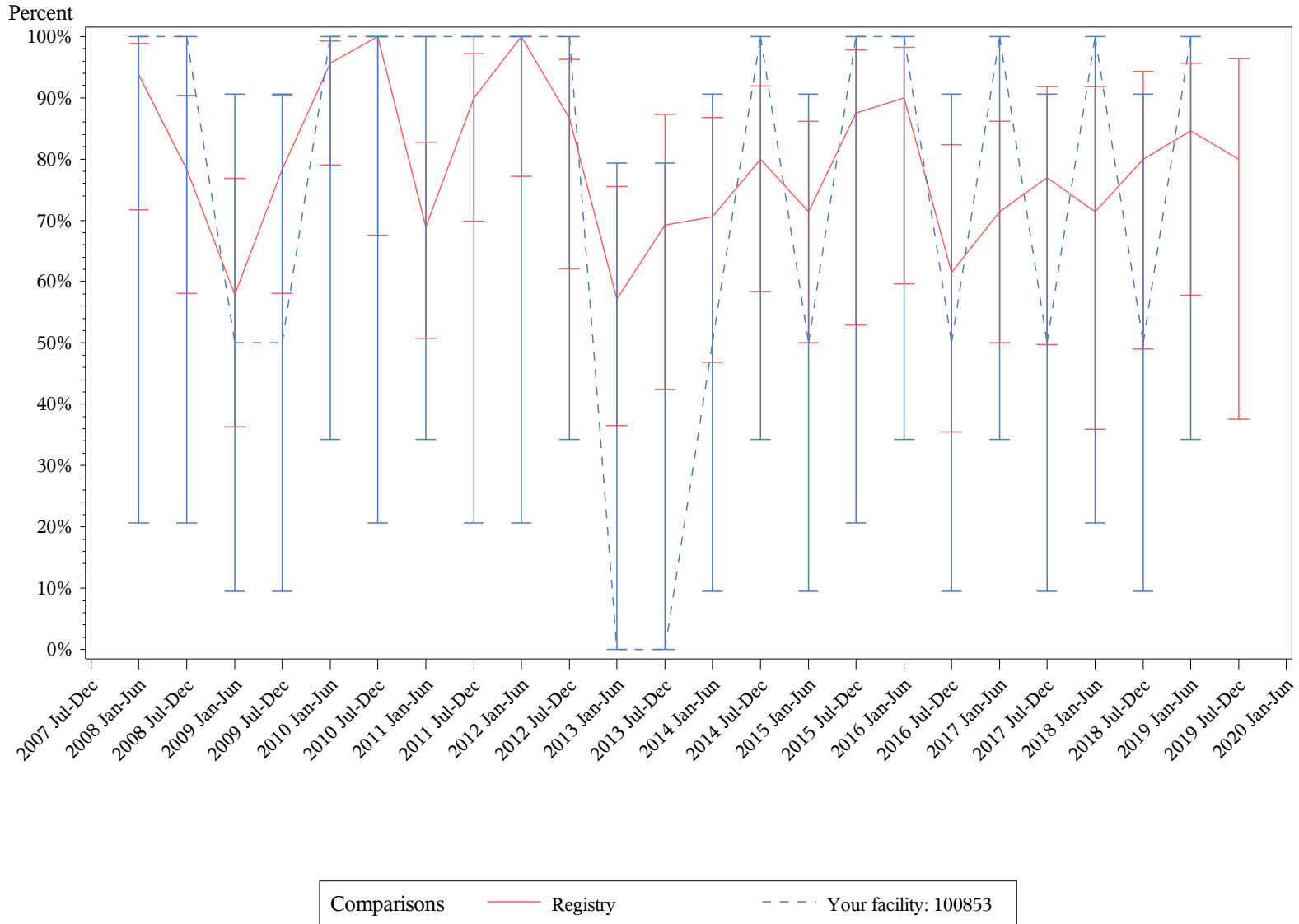
### Trend Chart: Colonic Perforations



# CT Colonography

## Jul 2019 - Dec 2019

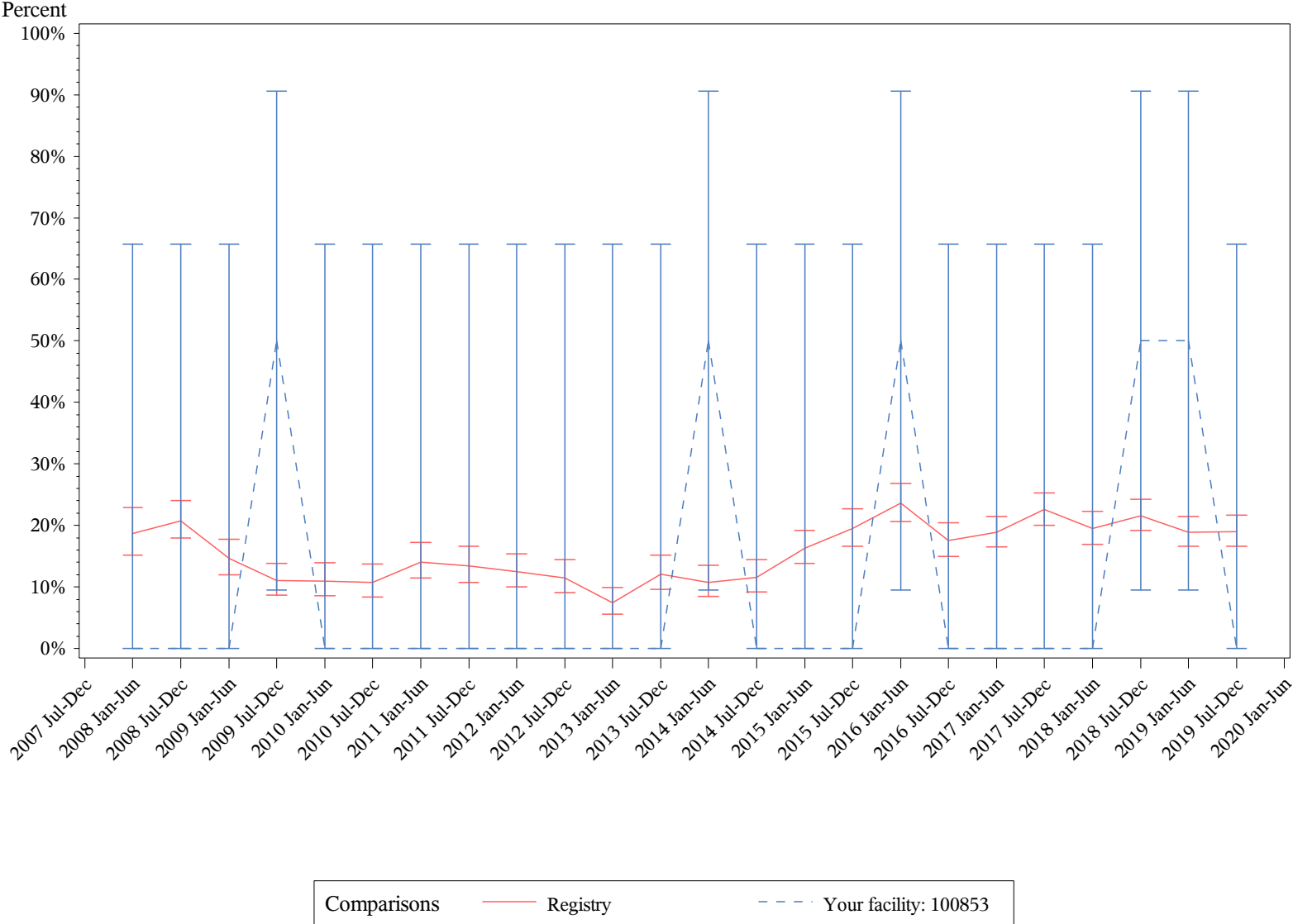
### Trend Chart: True Positives (ACRad 1)



# CT Colonography

## Jul 2019 - Dec 2019

### Trend Chart: Clinically Significant Extracolonic Findings



***This page is intentionally blank.***

Promote your participation in NRDR™!  
Download your marketing toolkit today.

---

[acr.org/CTCtoolkit](http://acr.org/CTCtoolkit)

**CONTACT US**

1.800.227.5463, ext. 3535  
[nrd@acr.org](mailto:nrd@acr.org) | [nrd.acr.org](http://nrd.acr.org)

