

- Place the application into discover Bluetooth device mode (in this example, select the check box), and click **Next**.

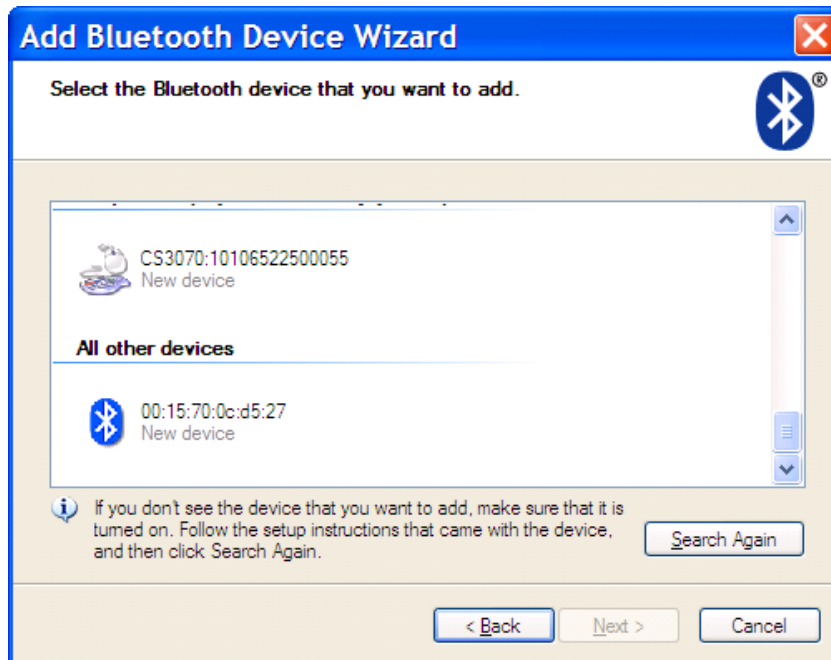


Figure 1-9 Sample Device Discovery Window

- Select the CS3070 device from the discovered device list. The Bluetooth application may prompt you to scan a passkey it generated, or for you to create and then scan a passkey (PIN).



Figure 1-10 Sample Passkey Option Window

6. Select an option, then click **Next**:
 - If you select **Choose a passkey for me**, the host generates and displays a passkey.
 - If you select **Use the passkey found in the documentation**, enter the default **1234**.
 - If you select **Let me choose my own passkey**, enter any passkey.
7. Scan *Numeric Bar Codes for PIN Entry on page 1-21* corresponding to the passkey, then scan the **Enter** bar code.



Figure 1-11 Sample Bluetooth Pairing Completion Window

8. Click **Finish** to complete the pairing. The device appears in the **Bluetooth Devices** window.

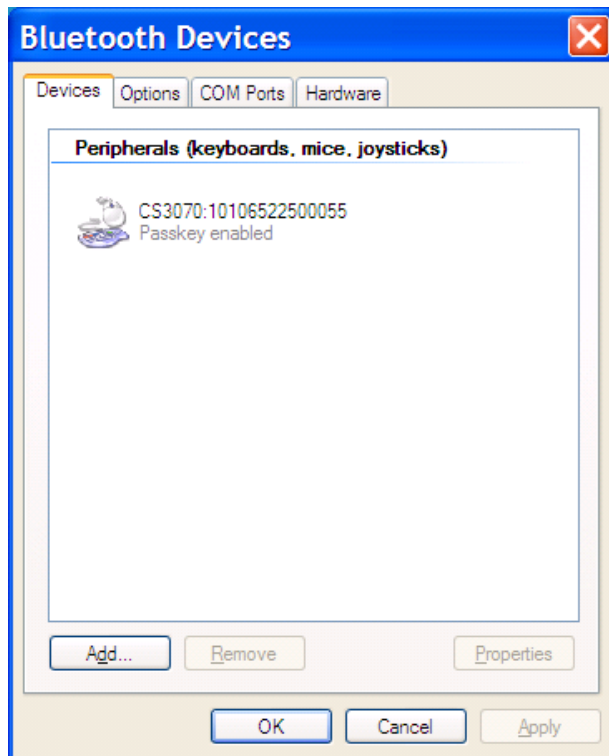


Figure 1-12 *Bluetooth Devices Window*

9. Select the device, then click **Add...** The CS3070 issues a two-tone beep and the Bluetooth button blinks slowly to indicate that the scanner paired with the host.

✓ **NOTE** Bluetooth pairing suspends temporarily while charging via a USB cable. Disconnecting the cable automatically re-establishes the Bluetooth pairing.

PC SPP Pairing Example

For CS3070 scanners, to pair to a Bluetooth-enabled PC or laptop via SPP:

✓ **NOTE** If the host does not support Bluetooth communication, a third-party Bluetooth adapter is required.

1. Press the scan button (+) to wake the scanner.
2. Scan [Bluetooth Serial Port Profile \(SPP\) on page 3-13](#). The Bluetooth button starts blinking quickly to indicate that the scanner is discoverable by the host.

3. On the host PC, launch the third party Bluetooth pairing application. Following is a sample window of such an application.



Figure 1-13 Sample Bluetooth Application Window

4. Place the application into discover Bluetooth device mode (in this example, select the check box), and click **Next**.

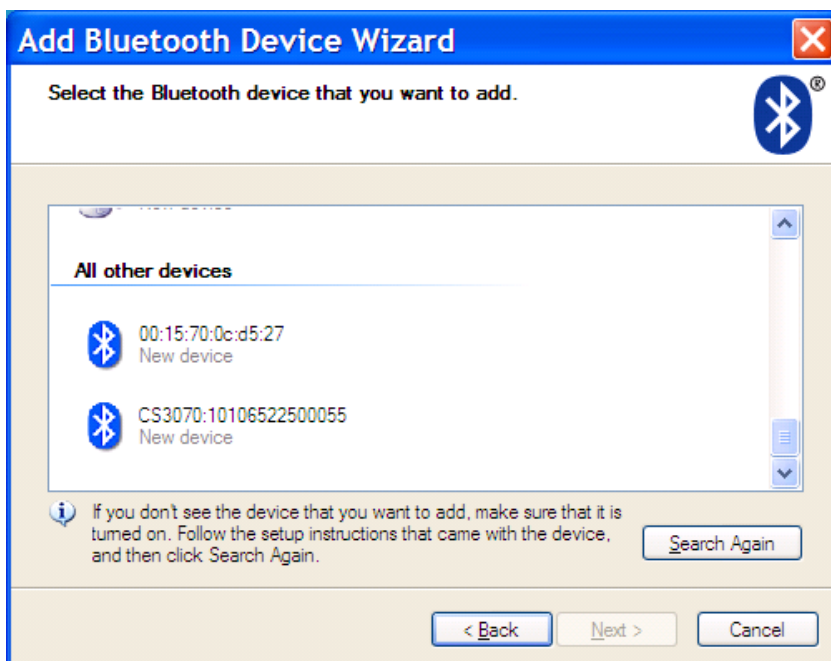


Figure 1-14 Sample Device Discovery Window

5. Select the CS3070 device from the discovered device list. The Bluetooth application may prompt you to scan a passkey it generated, or for you to create and then scan a passkey (PIN).

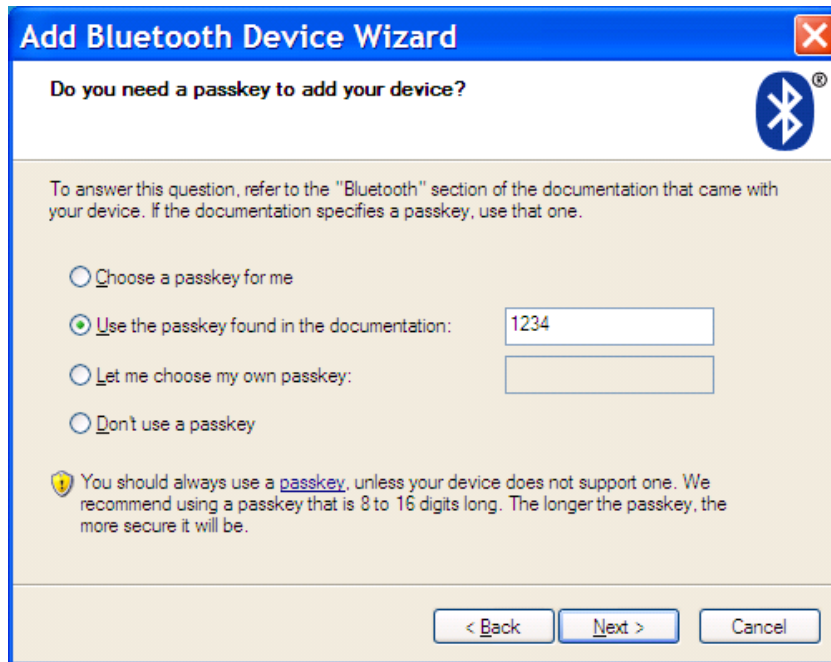


Figure 1-15 Sample Passkey Option Window

6. For SPP, select **Use the passkey found in the documentation**, then enter the default passkey **1234** in the text box. Click **Next**.



Figure 1-16 Sample Bluetooth Pairing Completion Window

✓ **NOTE** For SPP, the host requires entering a PIN, but no PIN entry is required for the CS3070.

- Click **Finish**. In order to complete the pairing, open a serial input application such as HyperTerminal. The CS3070 issues a two-tone beep and the Bluetooth button blinks slowly to indicate that the scanner paired with the host.

✓ **NOTE** Bluetooth pairing suspends temporarily while charging via a USB cable. Disconnecting the cable automatically re-establishes the Bluetooth pairing.

Windows Mobile Device (Motorola ES400) HID Pairing Example

To pair to a Motorola ES400 Windows Mobile 6.5 device via HID:

- Press the scan button (+) to wake the scanner.
- Press and hold the Bluetooth button (round button with Motorola logo) for five seconds. The scanner beeps and the Bluetooth button starts blinking quickly to indicate that the scanner is discoverable by the Motorola ES400.

✓ **NOTE** HID is the default profile for the CS3070. If this was changed, scan [Bluetooth HID Profile on page 3-13](#).

- On the ES400, launch the third party Bluetooth pairing application. Following is a sample window of such an application.

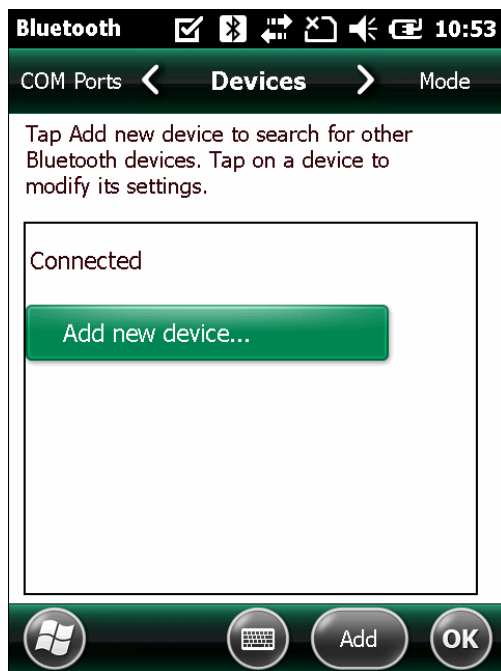


Figure 1-17 Sample Bluetooth Application - Add Device Window

4. Tap **Add new device...**. The ES400 searches for Bluetooth devices.

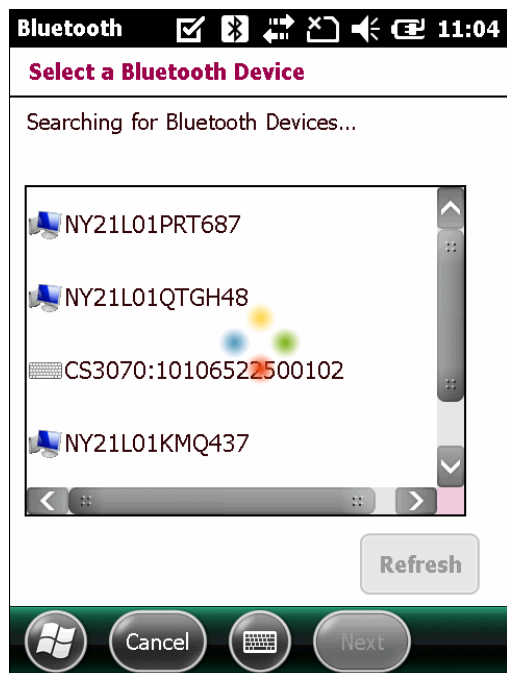


Figure 1-18 Sample Device Discovery Window

5. Select the CS3070 device from the discovered device list and tap **Next**. The device prompts you to enter a passcode.

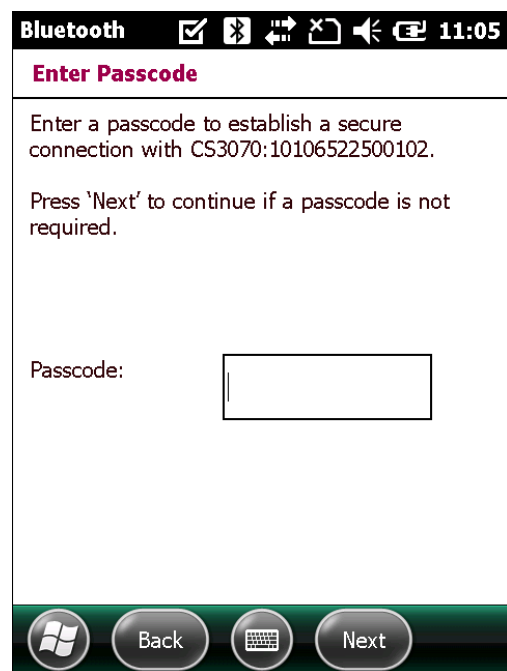


Figure 1-19 Enter Passcode Window

6. Tap **Next** if you don't require a passcode, or enter any passcode and then tap **Next**.

7. If you entered a passcode in Step 6, scan [Numeric Bar Codes for PIN Entry on page 1-21](#) corresponding to that code, then scan the **Enter** bar code.

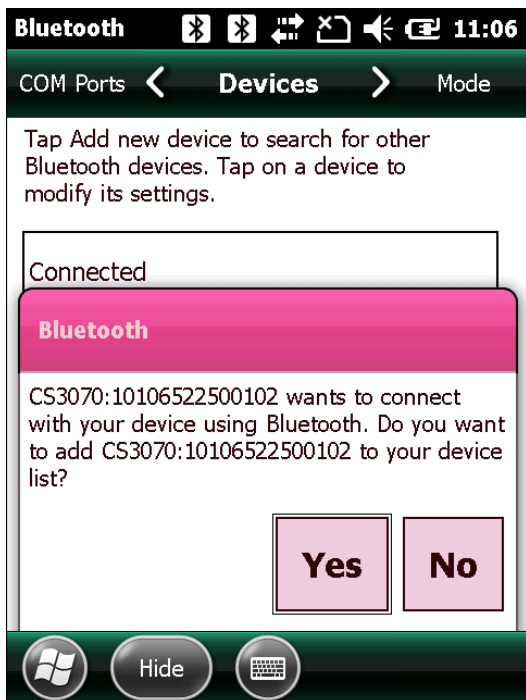


Figure 1-20 Connection Verification Window

8. Select **Yes** on the pop-up window to add the device to the device list.

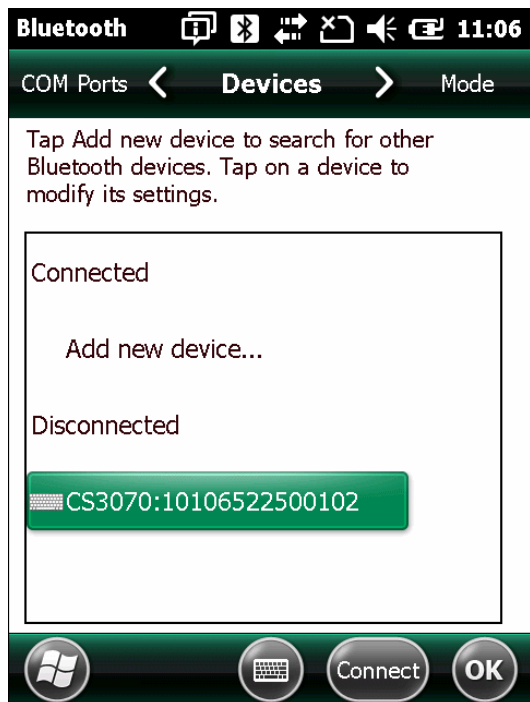


Figure 1-21 Discovered Devices List

9. Select the device and tap **Connect** to complete the pairing. The device appears in the **Connected** list, and the CS3070 issues a two-tone beep and the Bluetooth button blinks slowly to indicate that the scanner paired with the host.

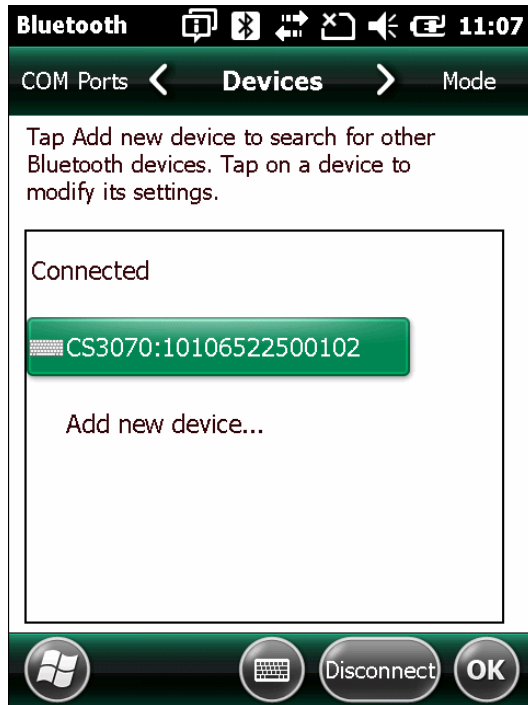


Figure 1-22 *Discovered Devices List*

- ✓ **NOTE** Bluetooth pairing suspends temporarily while charging via a USB cable. Disconnecting the cable automatically re-establishes the Bluetooth pairing.

Windows Mobile Device (Motorola ES400) SPP Pairing Example

For CS3070 scanners, to pair to a Motorola ES400 Windows Mobile 6.5 device via SPP:

1. Press the scan button (+) to wake the scanner.
2. Scan [Bluetooth Serial Port Profile \(SPP\) on page 3-13](#). The Bluetooth button starts blinking quickly to indicate that the scanner is discoverable by the ES400.

- On the ES400, launch the third party Bluetooth pairing application. Following is a sample window of such an application.

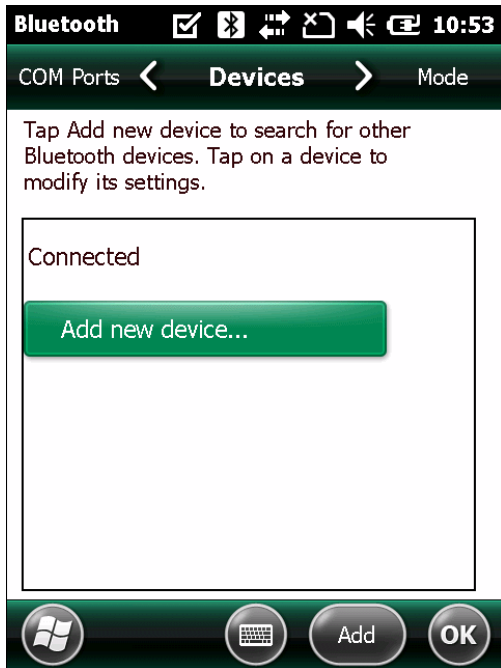


Figure 1-23 Sample Bluetooth Application Window - Add Device Window

- Tap **Add new device...**. The ES400 searches for Bluetooth devices.

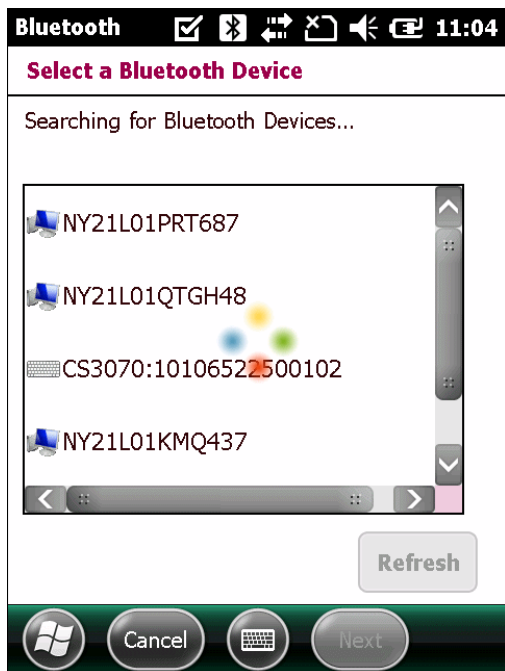


Figure 1-24 Sample Device Discovery Window

5. Select the CS3070 device from the discovered device list and tap **Next**. The device prompts you to enter a passcode.

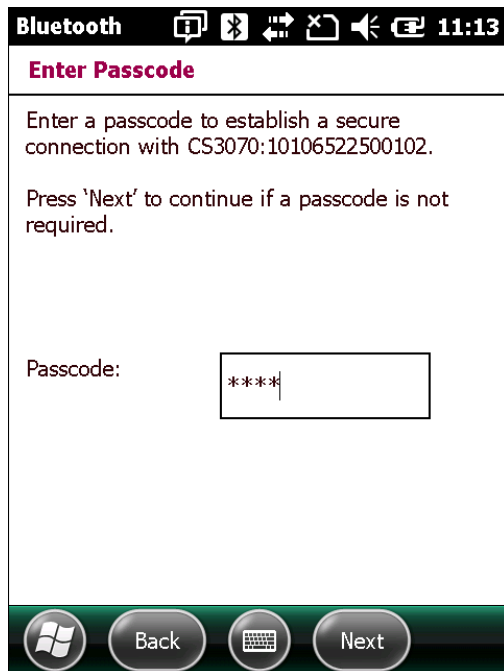


Figure 1-25 Sample Enter Passcode Window

6. Enter the CS3070 default PIN (1234) and tap **Next**.

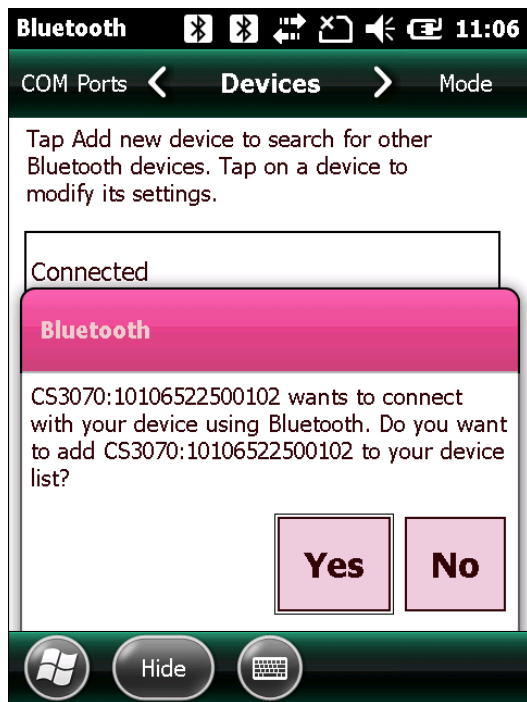


Figure 1-26 Connection Verification Window

✓ **NOTE** For SPP, the host requires entering a PIN, but no PIN entry is required for the CS3070.

7. Select **Yes** on the pop-up window to add the device to the device list.



Figure 1-27 Discovered Devices List

8. Select the device and tap **Connect**. The **Partnership Settings** window appears.

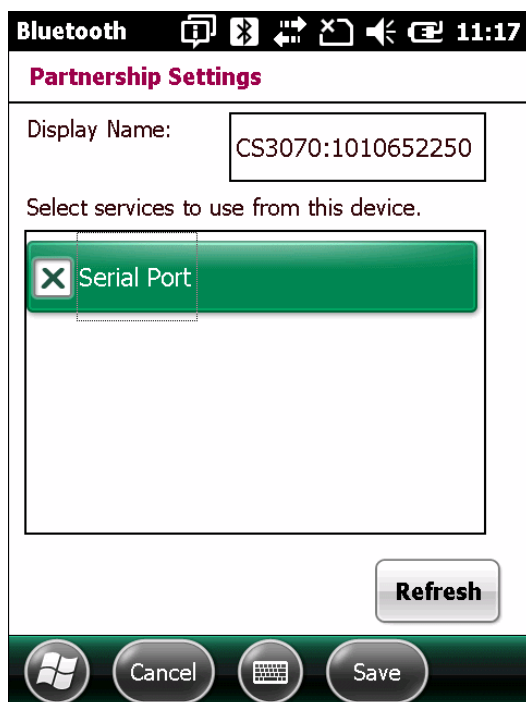


Figure 1-28 Partnership Settings Window

9. Tap **Serial Port** and then **Save** to complete the pairing. The device appears in the **Connected** list, and the CS3070 issues a two-tone beep and the Bluetooth button blinks slowly to indicate that the scanner paired with the ES400.

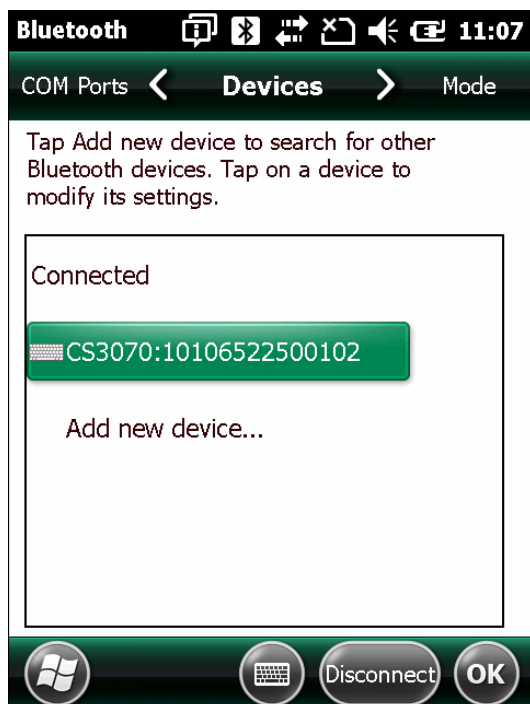


Figure 1-29 Discovered Devices List

- ✓ **NOTE** Bluetooth pairing suspends temporarily while charging via a USB cable. Disconnecting the cable automatically re-establishes the Bluetooth pairing.

Unpairing

To temporarily unpair the scanner and host, press the Bluetooth button. This disables Bluetooth and the Bluetooth button stops blinking. Pressing the Bluetooth button again re-pairs the scanner with the host.

To permanently unpair the scanner and host, scan [Unpair on page 3-13](#). This allows the scanner to pair to a different host device.

- ✓ **NOTE** To enter batch scanning mode, the scanner cannot be paired to a Bluetooth host (applies to CS3070 model only).

Deleting the CS3070 from the Device List

To delete the device from the discovered devices list, tap and hold the device and select **Delete**.

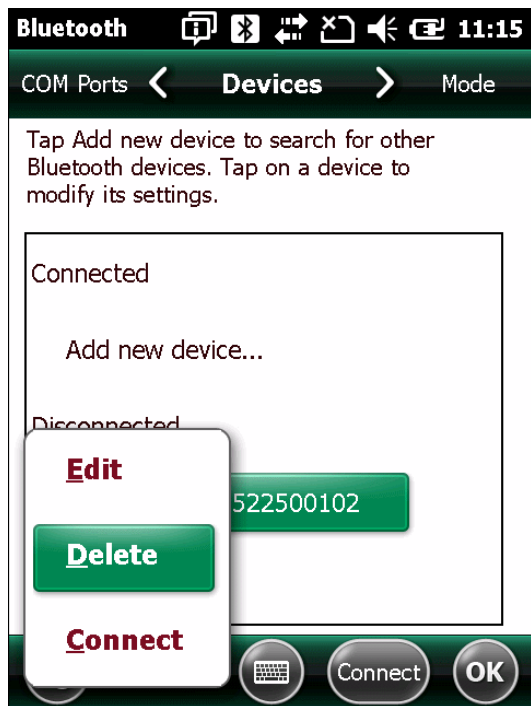


Figure 1-30 Deleting Device