

# National Radiology Data Registry

---

## Facility Report, 2018 Jul-Sep

Sample facility  
(Facility ID: 100853)



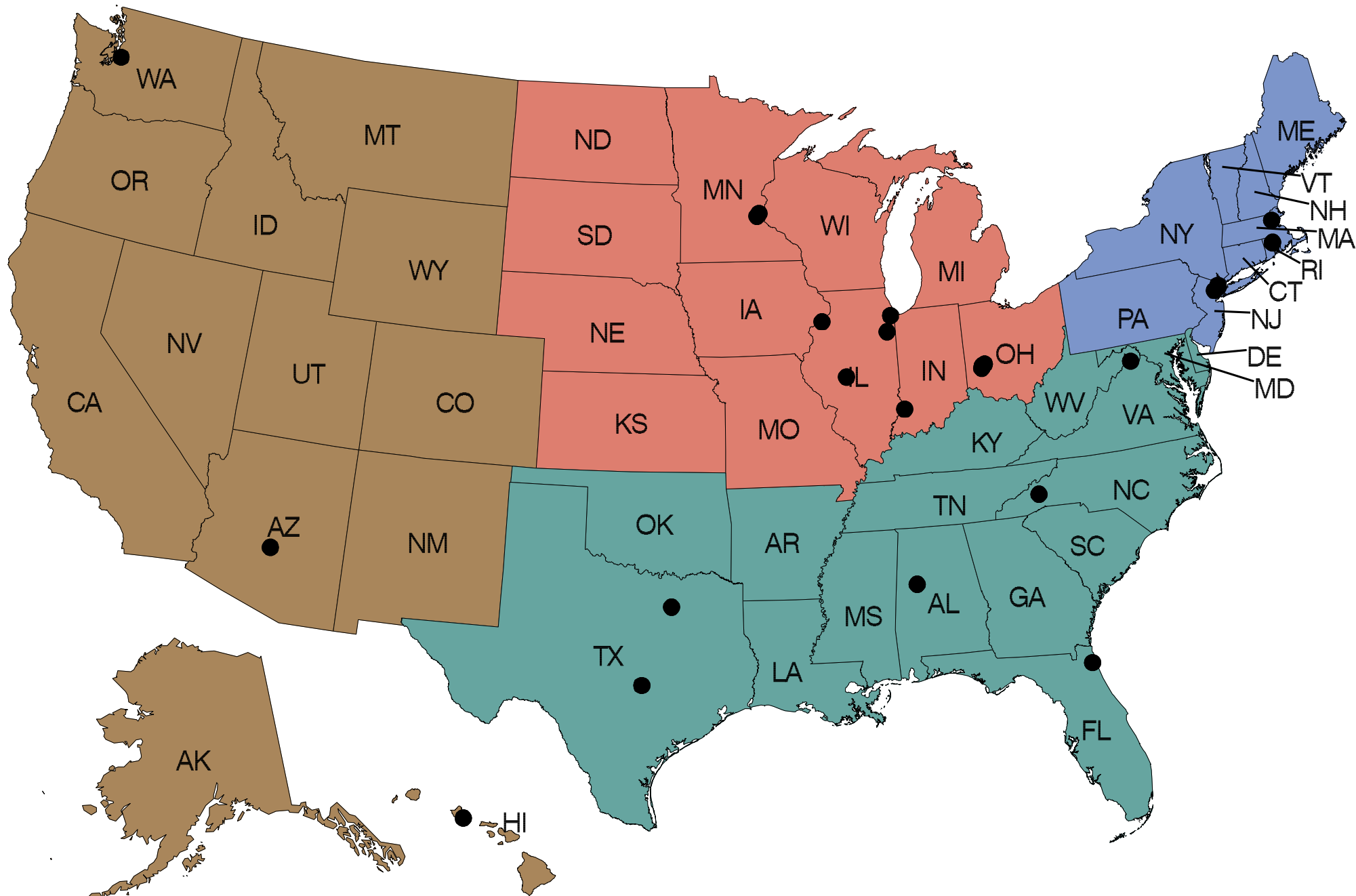
[nrdr.acr.org](http://nrdr.acr.org)



***This page is intentionally blank.***

# CT Colonography Registry

Jul 2018 - Sep 2018



Black dots indicate CTC participating facilities

**Census Region**    ■ Northeast    ■ Midwest    ■ South    ■ West

**CT Colonography Registry**  
**Jul 2018 - Sep 2018**  
**Summary Table - Sample facility**

	Facility						Registry		
	Your facility: 100853			Other facilities					
	Num <sup>1</sup>	Den <sup>2</sup>	%	Num <sup>1</sup>	Den <sup>2</sup>	%	Num <sup>1</sup>	Den <sup>2</sup>	%
Adequate Bowel Cleansing and Distention	2	2	100.0	359	433	82.9	361	435	83.0
Adequacy of Screening CTC Exam	2	2	100.0	179	213	84.0	181	215	84.2
Adequacy of Diagnostic CTC Exam	1	1	100.0	6	6	100.0	7	7	100.0
Colonic Perforations	0	2	0.0	0	147	0.0	0	149	0.0
True Positives (ACRad 1)		0			0			0	
Clinically Significant Extracolonic Findings	0	2	0.0	117	472	24.8	117	474	24.7

**Table of CTDIvol - Sample facility**

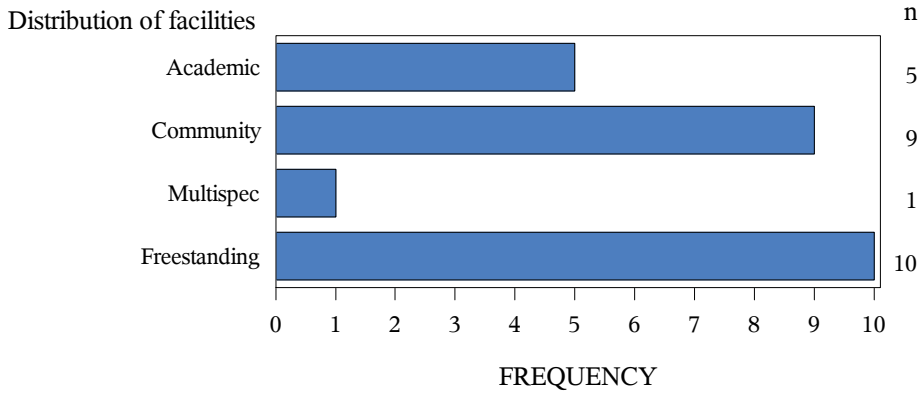
Your Facility (100853)		CTC Registry	
N	P25-Median-P75	N	P25-Median-P75
1	(5/5/5)	439	(4/10/12)

<sup>1</sup>Num (Numerator): Instances

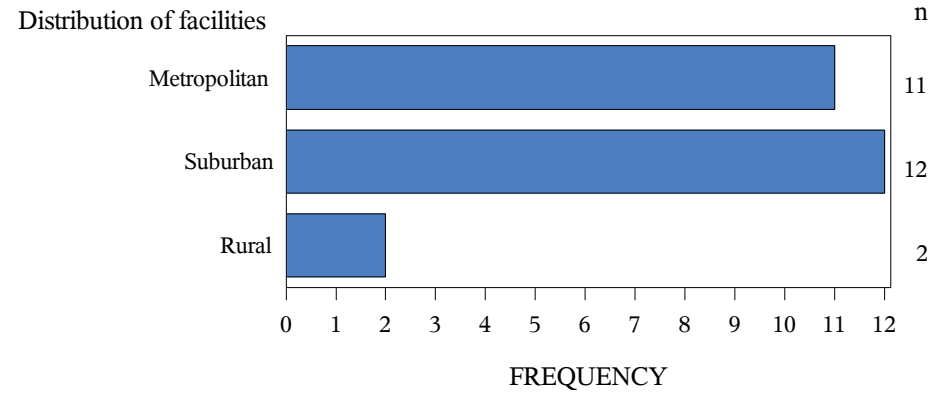
<sup>2</sup>Den (Denominator): Total number eligible for measure  
 Total # of cases in the CTC Registry= 474

# CTC Facility Characteristics

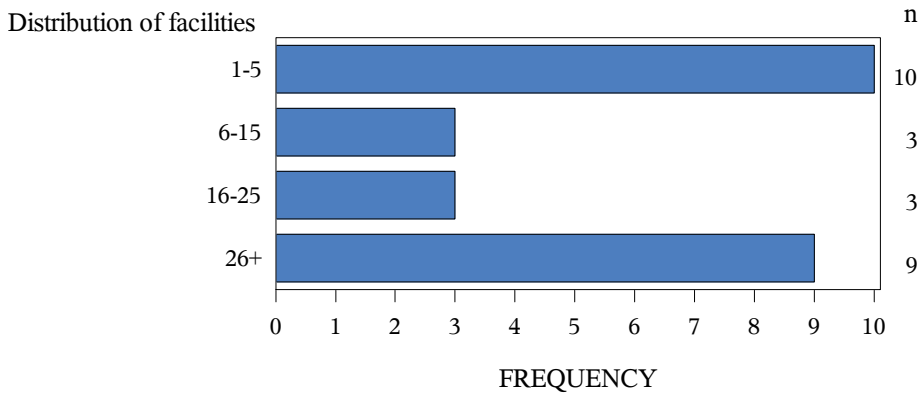
**Facility type**  
Sample facility : Freestanding



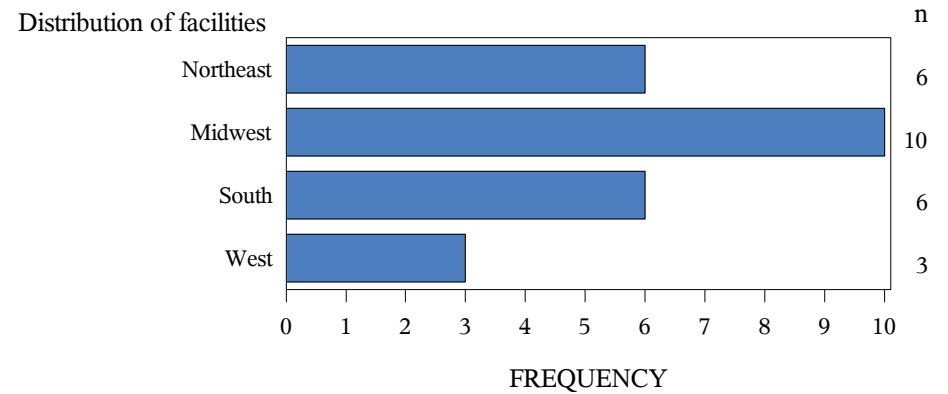
**Location**  
Sample facility : Suburban



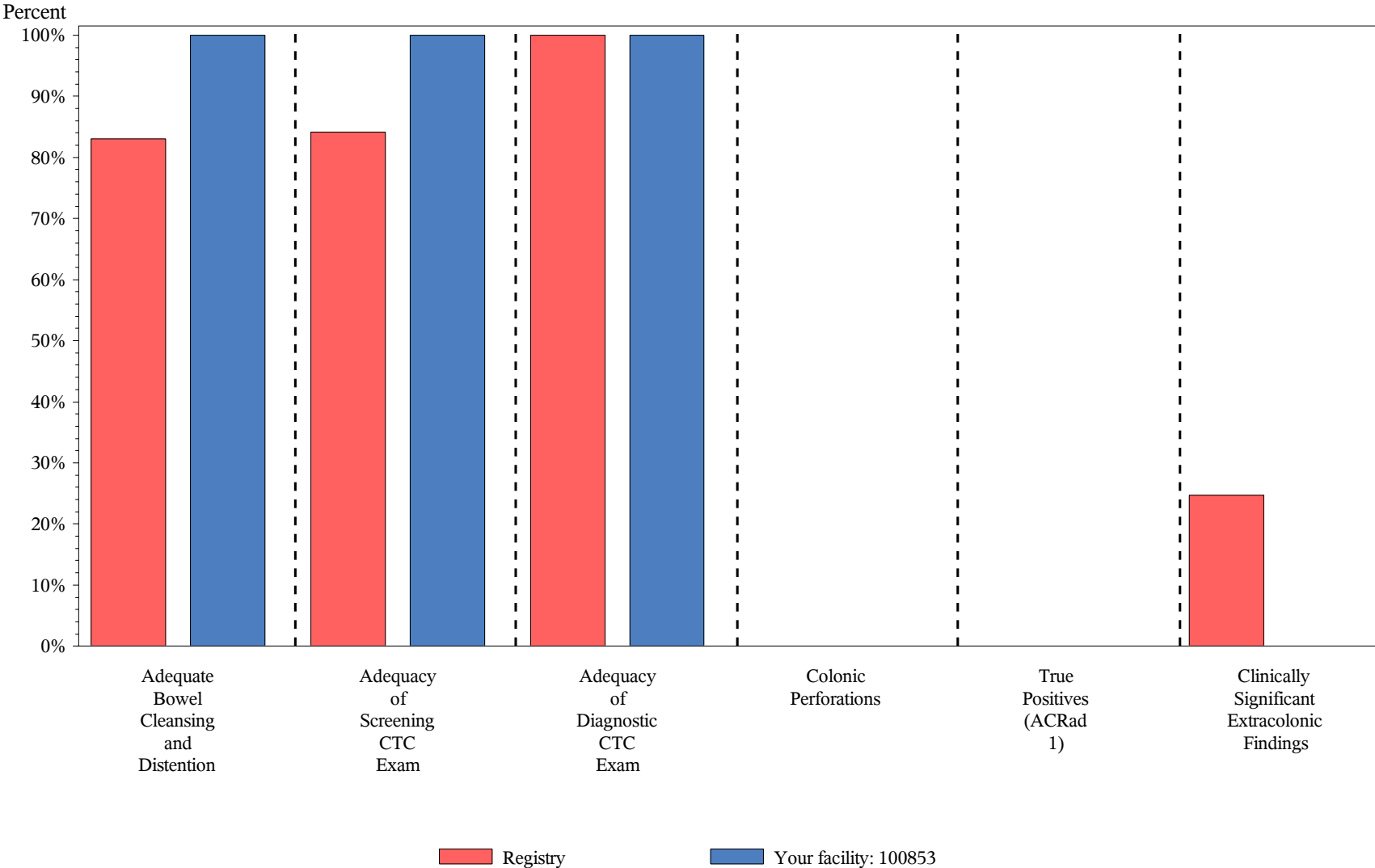
**Number of radiologists**  
Sample facility : 16-25



**Census region**  
Sample facility : South



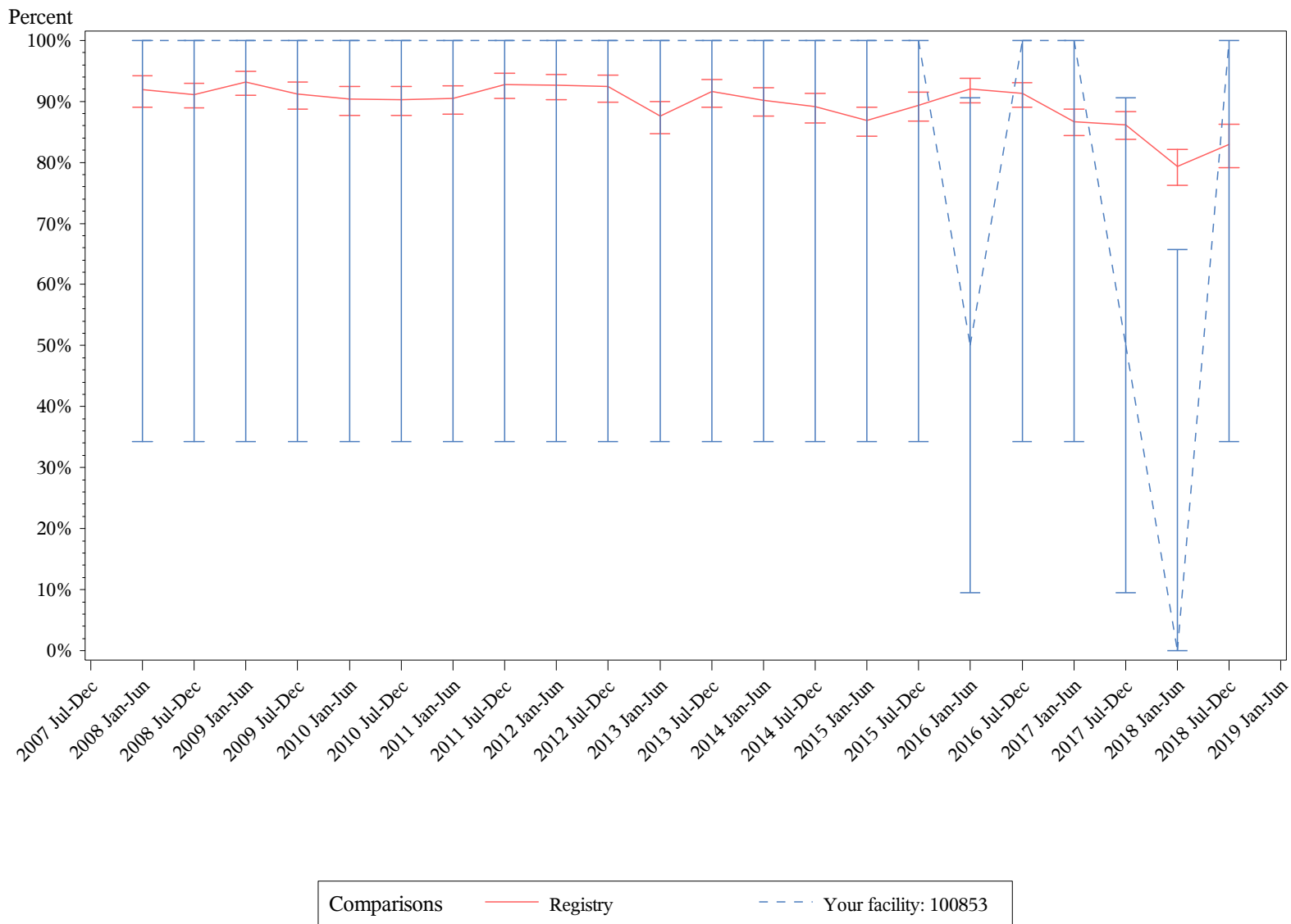
**CT Colonography**  
**Jul 2018 - Sep 2018**  
**Summary Chart - Sample facility**



# CT Colonography

## Jul 2018 - Sep 2018

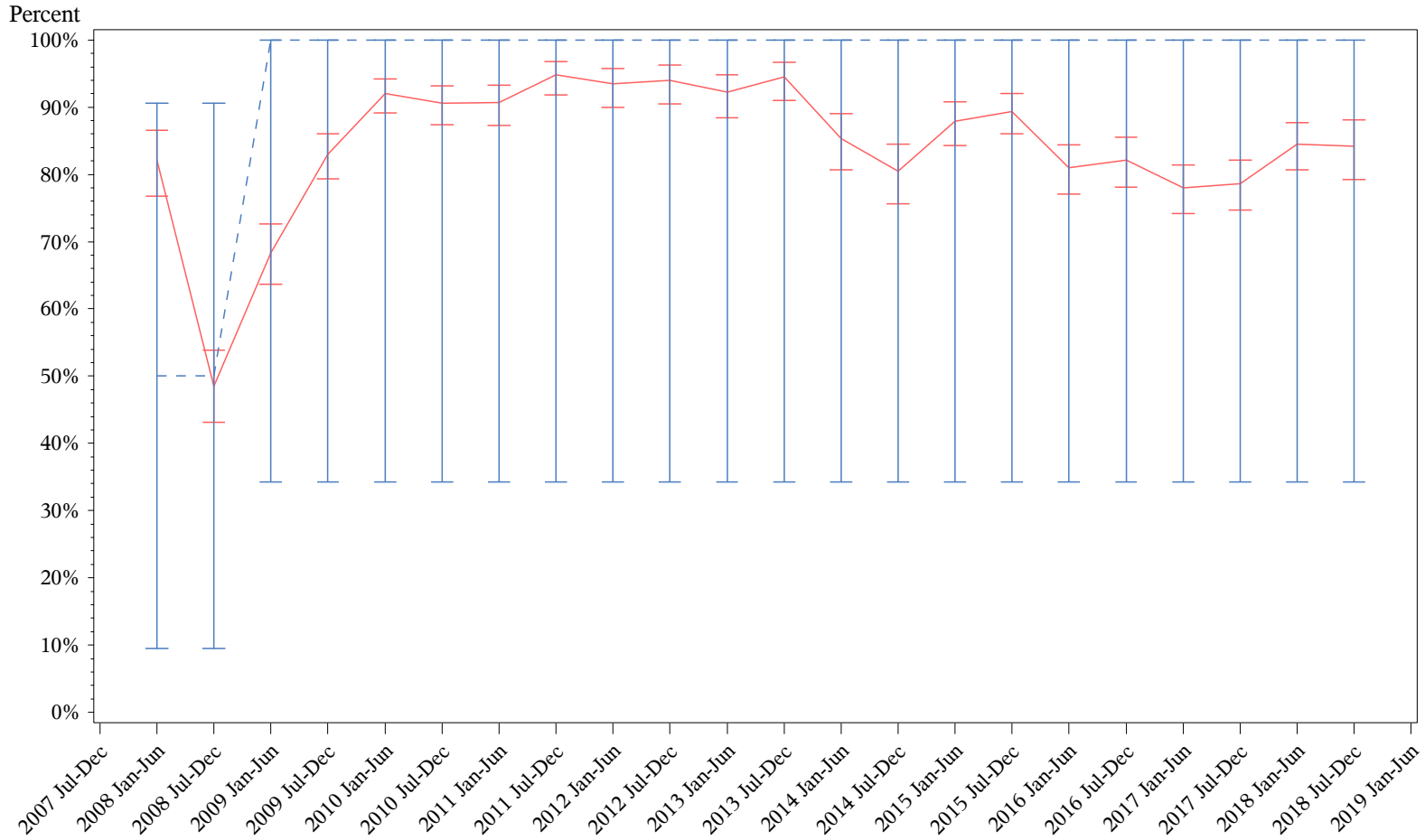
### Trend Chart: Adequate Bowel Cleansing and Distention



# CT Colonography

## Jul 2018 - Sep 2018

### Trend Chart: Adequacy of Screening CTC Exam



*\*For exams submitted before October 7, 2008, screening adequacy rates were calculated using collimation and kVp, effective mAs and quality reference mAs. For exams submitted on or after October 7, 2008, screening adequacy rates were calculated using CT DIvol.*

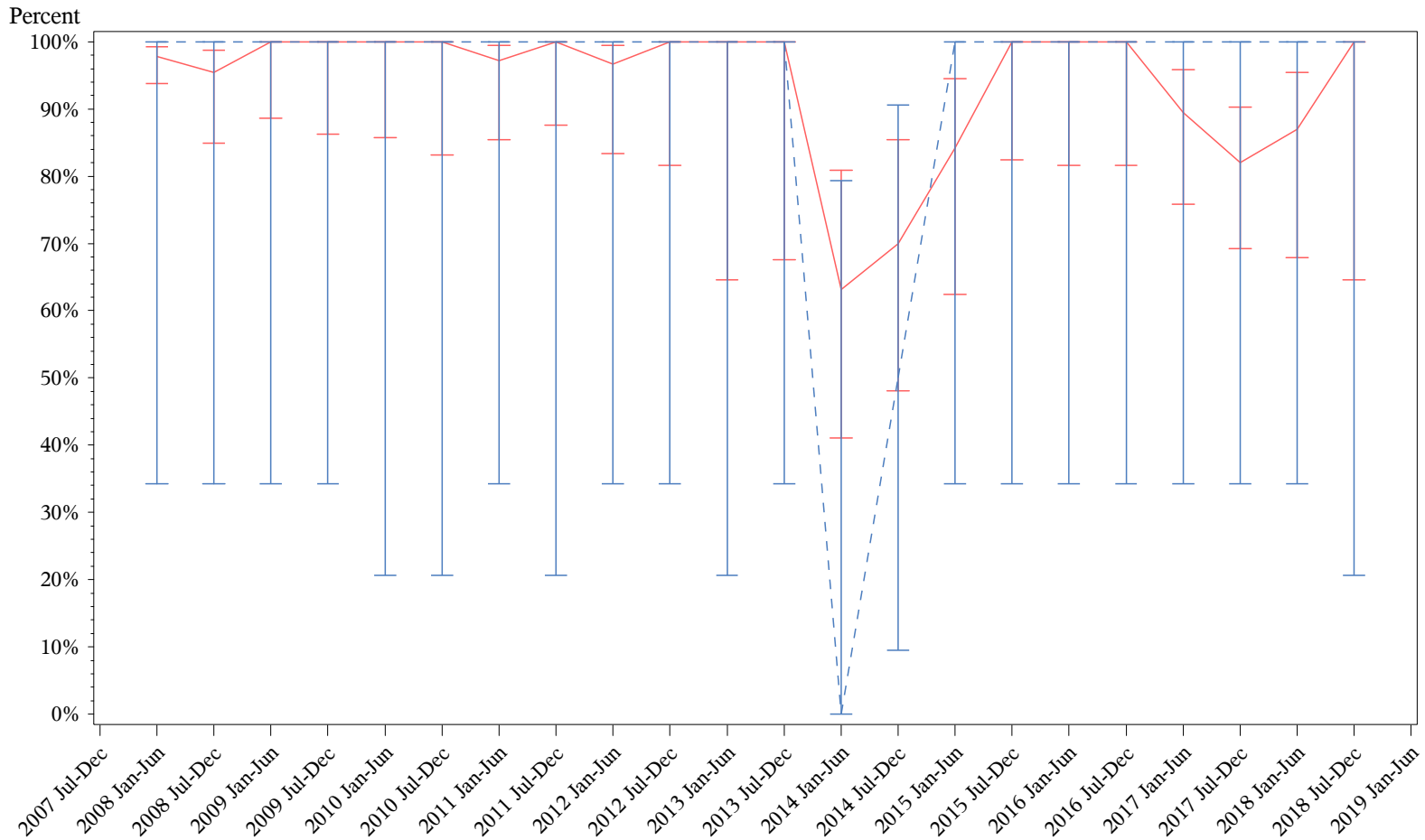
Comparisons    Registry    Your facility: 100853



# CT Colonography

## Jul 2018 - Sep 2018

### Trend Chart: Adequacy of Diagnostic CTC Exam



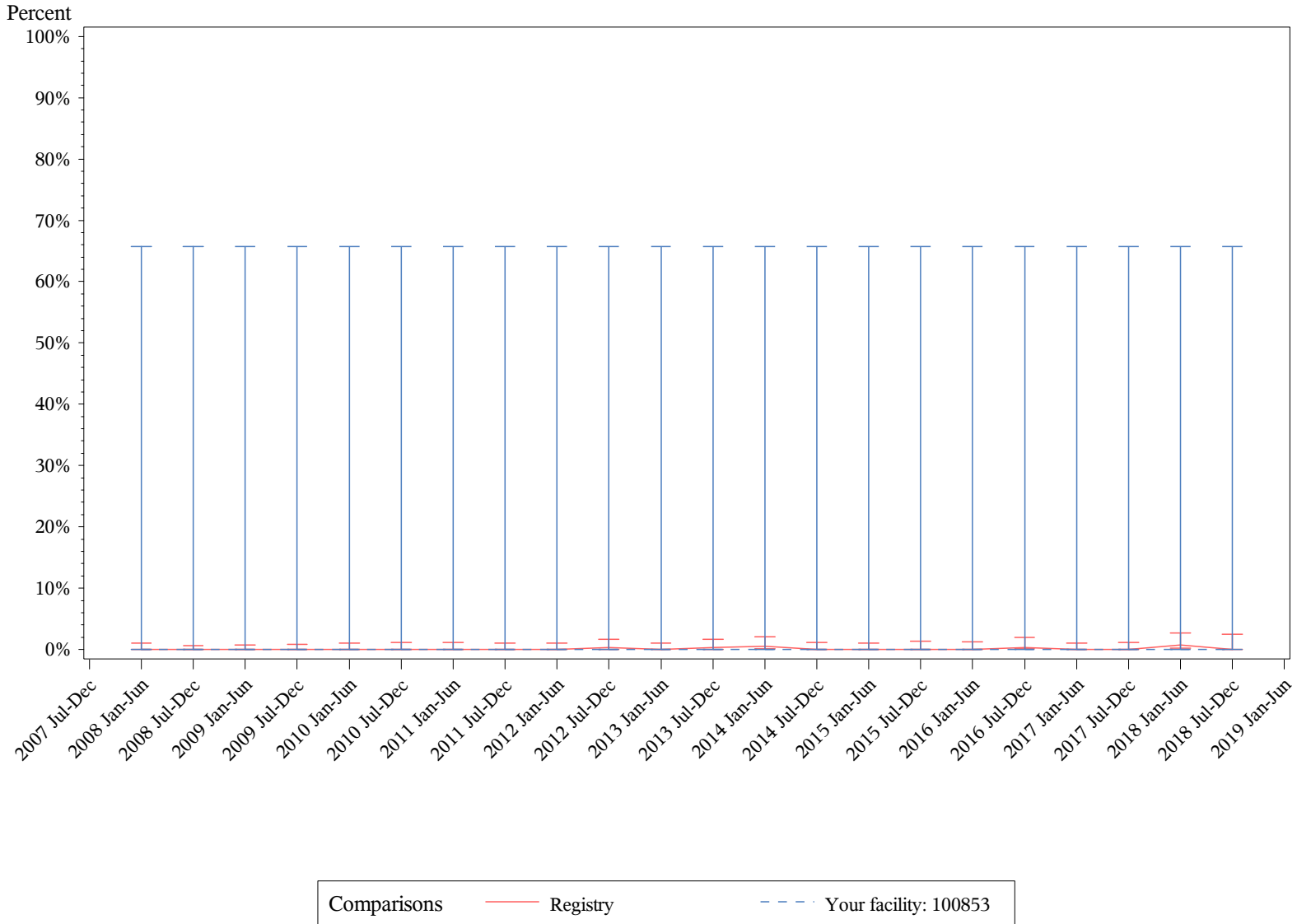
*\*For exams submitted before October 7, 2008, diagnostic adequacy rates were calculated using collimation and kVp.*

Comparisons    — Registry    - - - Your facility: 100853

# CT Colonography

## Jul 2018 - Sep 2018

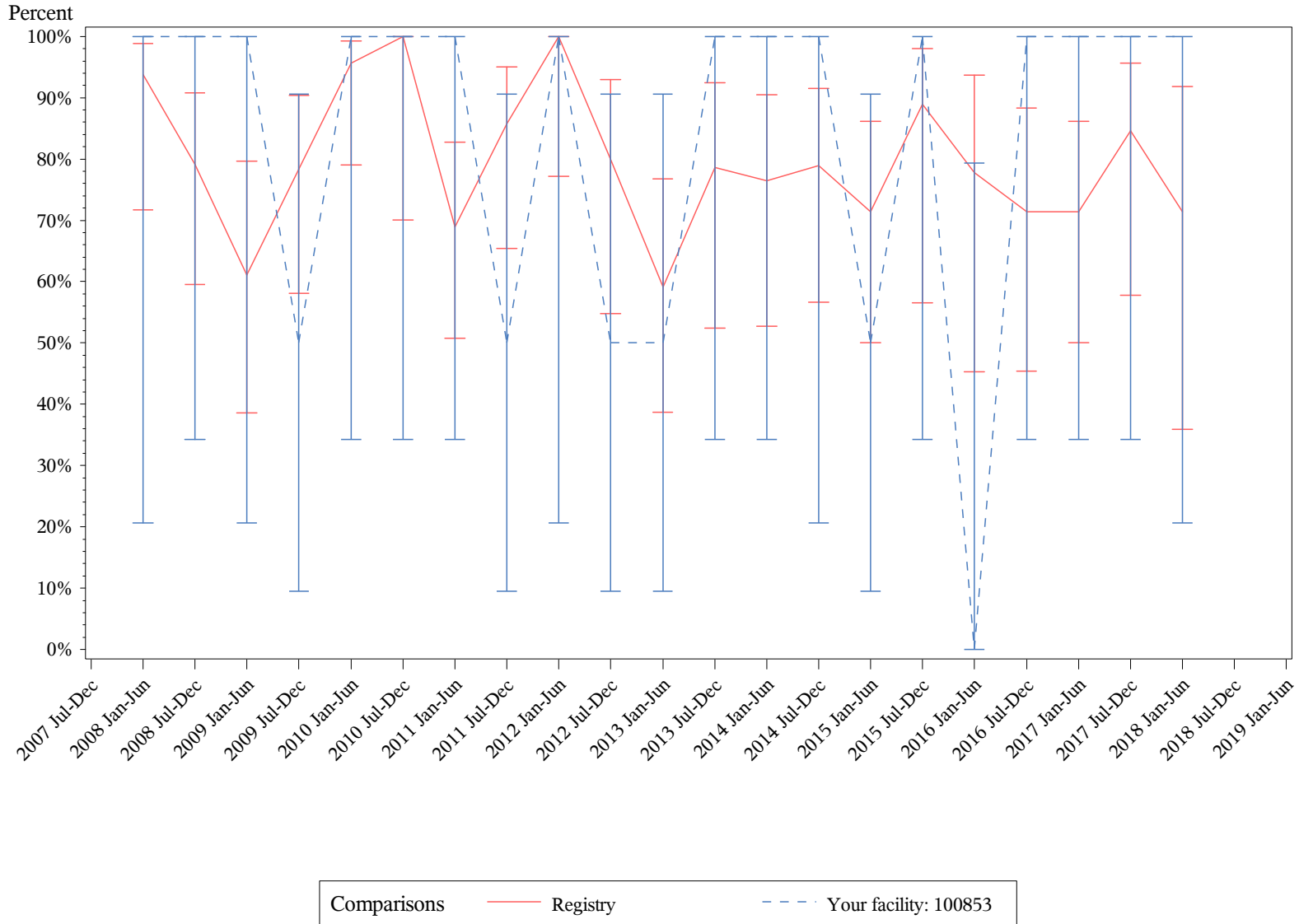
### Trend Chart: Colonic Perforations



# CT Colonography

## Jul 2018 - Sep 2018

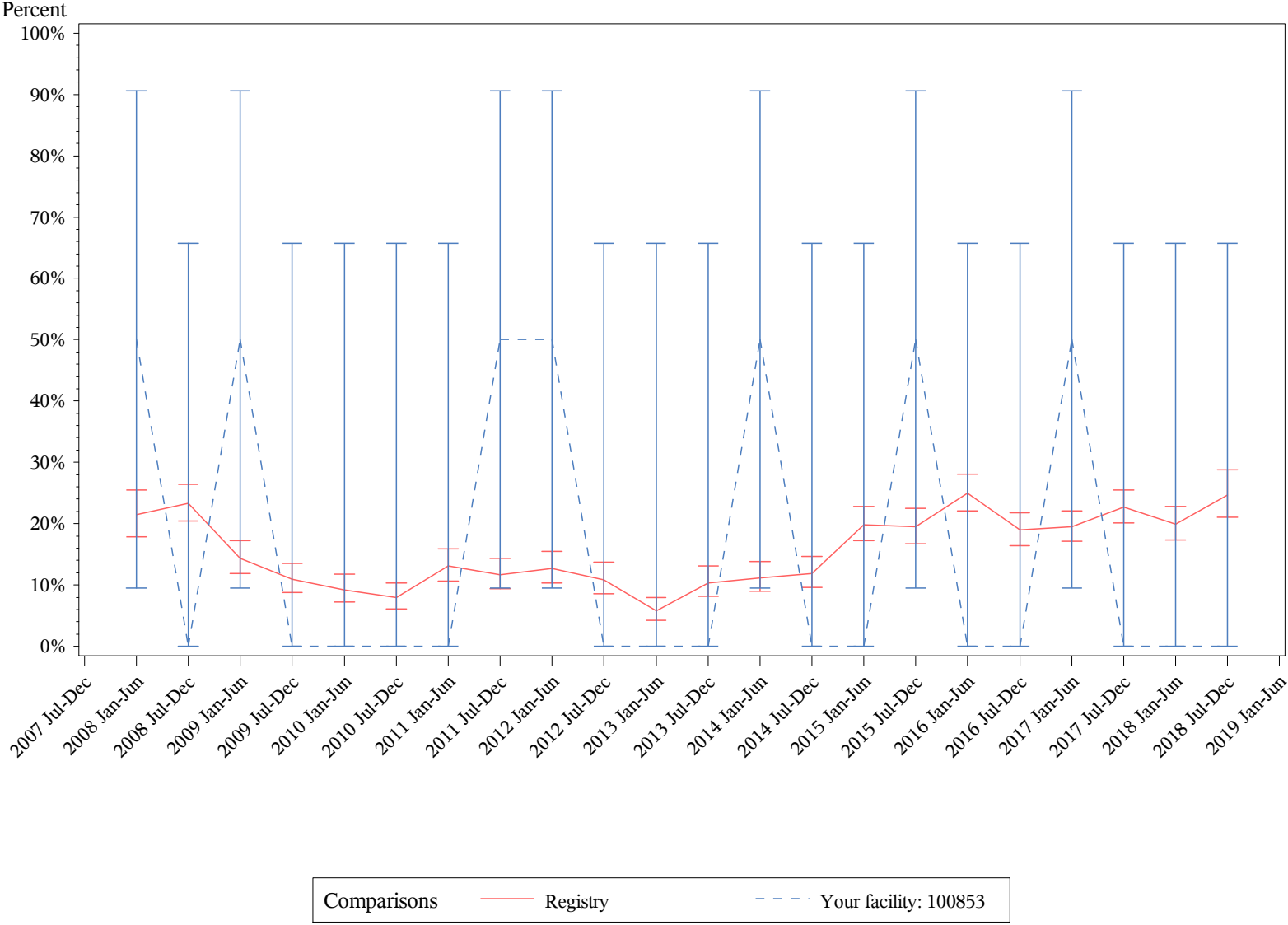
### Trend Chart: True Positives (ACRad 1)



# CT Colonography

## Jul 2018 - Sep 2018

### Trend Chart: Clinically Significant Extracolonic Findings



***This page is intentionally blank.***

Promote your participation in NRDR™!  
Download your marketing toolkit today.

---

[acr.org/CTCtoolkit](http://acr.org/CTCtoolkit)

**CONTACT US**

1.800.227.5463, ext. 3535  
[nrd@acr.org](mailto:nrd@acr.org) | [nrd.acr.org](http://nrd.acr.org)

